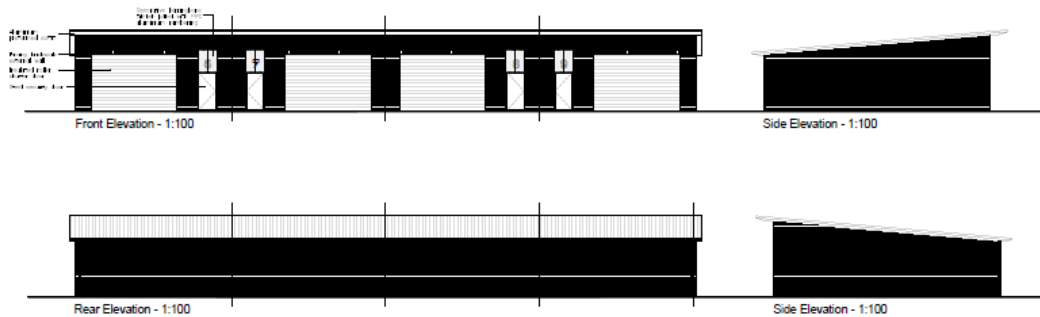
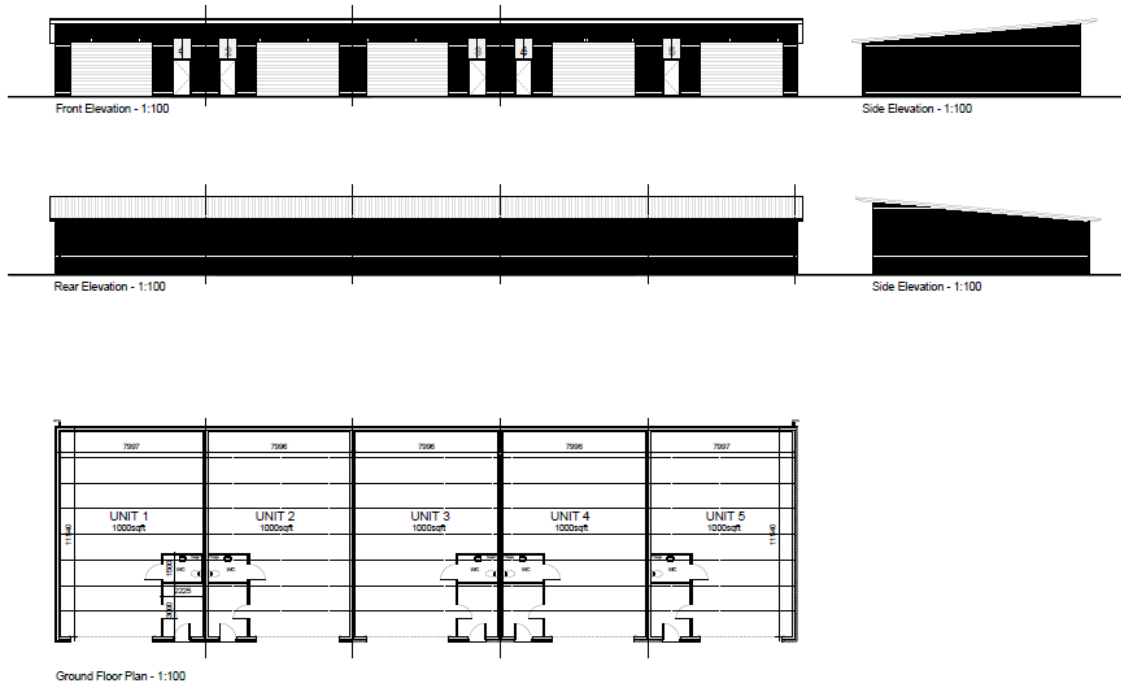


Appendix E - Proposed Units 1 – 5 and units 6 – 9 Application Number: 23/1490/FUL



S H E House Macklin Avenue, Cowpen Lane Industrial Estate

Partial demolition & sub-division of existing building into 45no self-storage units (Use Class B8) and 4no employment units (Use Class B2/B8), erection of 4no employment buildings (Use Class B2/B8) & 36no starter units (Use Class B2/B8) with associated infrastructure including access and landscaping