



## Crime and Disorder Report

Meeting date : 14<sup>th</sup> May 2025

Data period 01/04/2024 – 30/04/2025

Prepared by – Stockton Borough Council Information and Intelligence Team

This report provides an overview on recorded crime, anti-social behaviour incidents and domestic abuse in the Borough of Stockton-on-Tees for the 12-month period. The bulk of the statistics utilised for this report have been obtained from Cleveland Police crime statistic databases with the figures correct at the time of data extraction. The data is extracted from a 'live' systems and therefore remains the subject of on-going operational activity, audit and scrutiny.






This report will not provide any detailed analysis unless there are any substantial changes to patterns or trends.

# Executive Summary



Reporting period: Apr 24 – Apr 2025

Data Extraction Date – 30/04/2025

	General Analysis	Total	Direction	% Diff on Previous yr
	<p><b>Population</b></p> <p>The rate per 1,000 population (all ages) for publicly reported crime in Stockton on Tees for current reporting period.</p> <p><i>Source: Mid-Year Population Estimates, UK, 2021</i></p>	106.6		
	<p><b>Publicly reported offences</b></p> <p>Included crimes such as drug offences, public disorder and possession on weapons</p>	16855	↓	-10.1%
	<p><b>Police generated crime</b></p> <p>Includes crimes such as drug offences, public disorder and possession of weapons,</p>	3444	↓	-0.9%
	<b>Total crime recorded</b>	20299	↓	-8.7%
	<p><b>Publicly reported Anti-Social Behaviour – Police</b></p> <p>as at 08/05/25</p>	4977	↑	2.7%
	<p><b>Anti-Social Behaviour – Stockton Borough Council Community Safety</b></p> <p>Including noise and alcohol related issues publicly and officer generated as at 08/05/25</p>	5410	↑	9.82%

# Crime Overview – Year Comparison

Table 1

Cleveland Police Crime Statistics for Stockton-on-Tees:  
April 2024 – April 2025

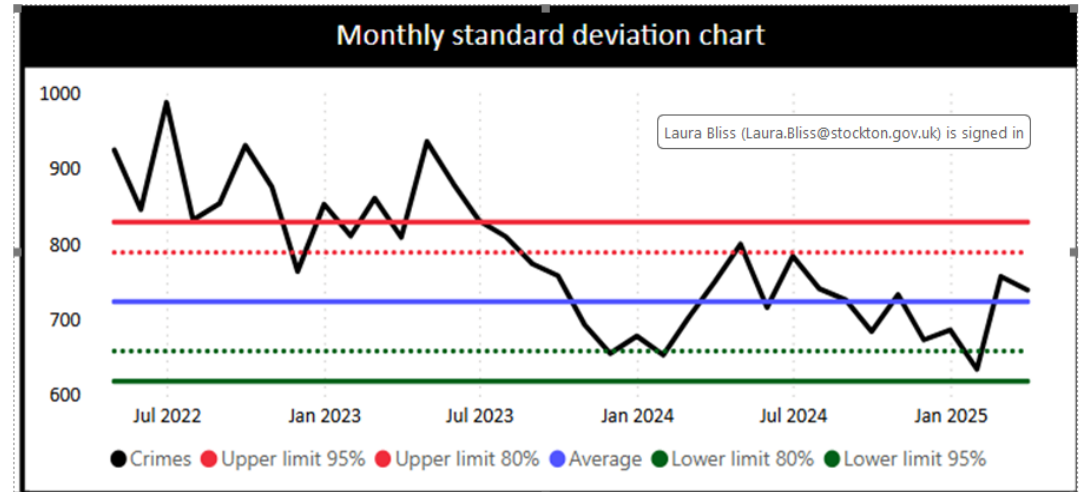
## Violence, Sexual Offences and Robbery

SOURCE: Cleveland Police monthly crime statistics database

### Publicly reported offences

- VIOLENCE overall is down 6.8%
- DEATH OR SERIOUS INJURY CAUSED BY ILLEGAL DRIVING has showed the largest reduction with -70.6%
- SEXUAL OFFENCES is showing an overall percentage of 13.7%

Crime	Selected Month			Last 6 Months			Last 12 Months		
	Current	Diff	% Diff	Current	Diff	% Diff	Current	Diff	% Diff
☐ Victim Based Crime	738	-11	-1.5%	4216	91	2.2%	8661	-447	-4.9%
☐ Violence	637	-27	-4.1%	3668	-36	-1.0%	7596	-557	-6.8%
☐ Violence Without Injury	261	-13	-4.7%	1484	87	6.2%	2986	4	0.1%
☐ Stalking and Harassment	220	-9	-3.9%	1280	-127	-9.0%	2625	-464	-15.0%
☐ Violence With Injury	156	0	0.0%	902	10	1.1%	1978	-83	-4.0%
☐ Death or serious injury caused by illegal driving		-5	-100.0%	2	-5	-71.4%	5	-12	-70.6%
☐ Homicide				-1	-100.0%		2	-2	-50.0%
☐ Sexual Offences	70	7	11.1%	436	113	35.0%	839	101	13.7%
☐ Other Sexual Offences	49	11	28.9%	282	79	38.9%	543	49	9.9%
☐ Rape	21	-4	-16.0%	154	34	28.3%	296	52	21.3%
☐ Robbery	31	9	40.9%	112	14	14.3%	226	9	4.1%
<b>Total</b>	<b>738</b>	<b>-11</b>	<b>-1.5%</b>	<b>4216</b>	<b>91</b>	<b>2.2%</b>	<b>8661</b>	<b>-447</b>	<b>-4.9%</b>



# Crime Overview – Year Comparison

Table 2

Cleveland Police Crime Statistics for Stockton-on-Tees:  
April 2024 – April 2025

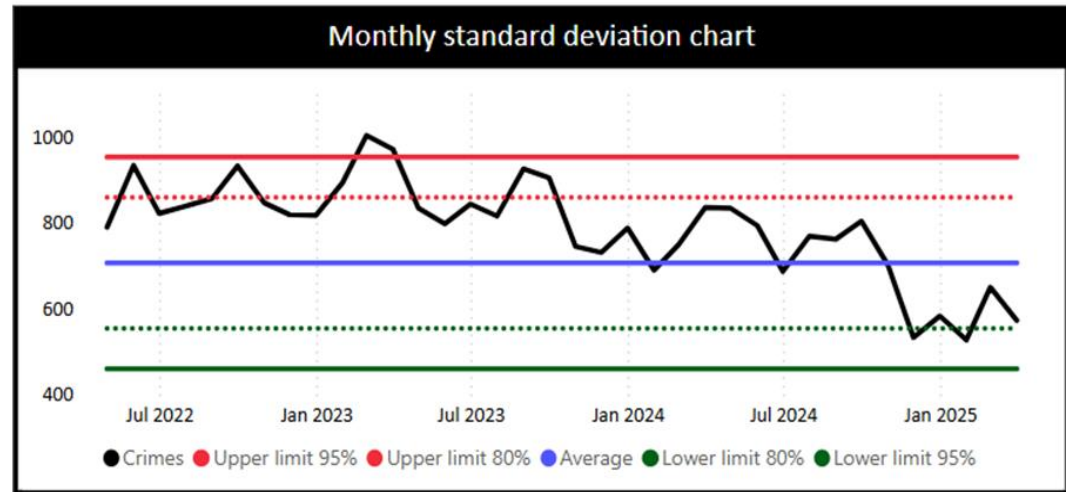
## Theft, Criminal Damage and Arson

SOURCE: Cleveland Police monthly crime statistics database

### Publicly reported offences

- THEFT overall is down 18.0%
- Burglary Residential has showed the largest reduction with -35.1%
- CRIMINAML DAMAGE & ARSON overall indicated a reduction of 6.7% however ARSON is showing an increase with 9.5% on the previous 12 months.

Crime	Selected Month			Last 6 Months			Last 12 Months		
	Current	Diff	% Diff	Current	Diff	% Diff	Current	Diff	% Diff
☐ Victim Based Crime	571	-263	-31.5%	3556	-972	-21.5%	8194	-1445	-15.0%
☐ Theft Offences	386	-234	-37.7%	2466	-826	-25.1%	5794	-1272	-18.0%
☐ Shoplifting	112	-109	-49.3%	876	-240	-21.5%	2071	-136	-6.2%
☐ All Other Theft Offences	110	-14	-11.3%	606	-173	-22.2%	1452	-288	-16.6%
☐ Vehicle Offences	81	-61	-43.0%	471	-247	-34.4%	1128	-328	-22.5%
☐ Burglary Residential	50	-45	-47.4%	319	-120	-27.3%	717	-388	-35.1%
☐ Burglary Business and Community	18	4	28.6%	95	-38	-28.6%	216	-66	-23.4%
☐ Bicycle Theft	11	-8	-42.1%	62	-13	-17.3%	137	-62	-31.2%
☐ Theft From The Person	4	-1	-20.0%	37	5	15.6%	73	-4	-5.2%
☐ Criminal Damage & Arson	185	-29	-13.6%	1090	-146	-11.8%	2400	-173	-6.7%
☐ Criminal Damage	169	-26	-13.3%	1023	-152	-12.9%	2250	-186	-7.6%
☐ Arson	16	-3	-15.8%	67	6	9.8%	150	13	9.5%
<b>Total</b>	<b>571</b>	<b>-263</b>	<b>-31.5%</b>	<b>3556</b>	<b>-972</b>	<b>-21.5%</b>	<b>8194</b>	<b>-1445</b>	<b>-15.0%</b>



# Crime Overview – Year Comparison

Table 3

Cleveland Police Crime Statistics for Stockton-on-Tees:  
April 2024 – April 2025

## Public Order, Drug Offences and Weapons

SOURCE: Cleveland Police monthly crime statistics database

### Publicly reported offences

- DRUG offences continues to show on increase of 37.4% overall on the previous 12-month period.
- Public Order Offences have reduced by 17.2%

Crime	Selected Month			Last 6 Months			Last 12 Months		
	Current	Diff	% Diff	Current	Diff	% Diff	Current	Diff	% Diff
⊖ Non victim based	259	71	37.8%	1287	23	1.8%	2758	-102	-3.6%
⊖ Public Order Offences	145	25	20.8%	728	-121	-14.3%	1641	-340	-17.2%
⊖ Public Order Offences	142	22	18.3%	725	-124	-14.6%	1638	-343	-17.3%
⊖ Public Order	3	3	Infinity	3	3	Infinity	3	3	Infinity
⊖ Drug Offences	89	35	64.8%	450	137	43.8%	889	242	37.4%
⊖ Drug Possession	43	8	22.9%	243	25	11.5%	464	3	0.7%
⊖ Drug Trafficking	46	27	142.1%	207	112	117.9%	425	239	128.5%
⊖ Weapons Possession Offences	25	11	78.6%	109	7	6.9%	228	-4	-1.7%
⊖ Weapons Possession Offences	25	11	78.6%	109	7	6.9%	228	-4	-1.7%
<b>Total</b>	<b>259</b>	<b>71</b>	<b>37.8%</b>	<b>1287</b>	<b>23</b>	<b>1.8%</b>	<b>2758</b>	<b>-102</b>	<b>-3.6%</b>

