



**Stockton-on-Tees**  
BOROUGH COUNCIL

# **Regeneration and Environment Local Plan Infrastructure Strategy**

## **Regulation 19 Publication Draft**

### **February 2015**



**Stockton-on-Tees**  
BOROUGH COUNCIL

Economic Regeneration and Transport

Big plans for an outstanding Borough

## **CONTENTS**

|  | <b>Page</b>   |
|--|---------------|
| <b>Introduction</b>  | <b>3</b>      |
| <b>Transport and Accessibility</b>   | <b>5</b>      |
| <b>Education</b>   | <b>10</b>     |
| <b>Health</b>  | <b>14</b>     |
| <b>Libraries</b>   | <b>17</b>     |
| <b>Cemeteries and Crematoria</b>   | <b>19</b>     |
| <b>Green Infrastructure</b>  | <b>19</b>     |
| <b>Water Supply, Waste Water Management, Flooding and Surface Water Management</b>   | <b>24</b>     |
| <b>Energy Supply</b>   | <b>27</b>     |
| <b>Emergency Services</b>  | <b>29</b>     |
| <b>Community Sports and Leisure Facilities</b>   | <b>30</b>     |
| <b>Telecommunications and Broadband</b>  | <b>30</b>     |
| <b>Minerals and Waste Management</b>   | <b>31</b>     |
| <br><b>Tables and Appendices</b>   |               |
| <br><b>Table T1: Public Rights of Way by Parish</b>  | <br><b>9</b>  |
| <b>Table ED1: Number and Type of Schools in Stockton on Tees</b>   | <b>11</b>     |
| <b>Table ED2: Reception Pupil Projections against PAN for Primary School Population in Stockton on Tees 2013 - 2018</b>    | <b>12</b>     |
| <b>Table ED3: Reception Pupil Projections against PAN for Secondary School Population in Stockton on Tees 2013 to 2018</b> | <b>13</b>     |
| <b>Table CLF1: Performance against Quantity Standards for Open Space</b>   | <b>23</b>     |
| <br><b>Appendix 1: List of Schools and Colleges in Stockton</b>  | <br><b>35</b> |
| <b>Appendix 2: Map - Primary Schools Planning Areas</b>  | <b>39</b>     |
| <b>Appendix 3: Table Stockton on Tees - Schools and Published Admission Numbers 2013 to 2014</b>                           | <b>40</b>     |
| <b>Primary Schools</b>   |               |
| <b>Appendix 4: Map Secondary Schools Planning Areas</b>  | <b>43</b>     |
| <b>Appendix 5: Table: Stockton on Tees - Schools and Published Admission Numbers 2013 to 2014</b>                          | <b>45</b>     |
| <b>Secondary Schools</b>   |               |
| <b>Appendix 6: Stockton on Tees - Early Years Provision</b>  | <b>47</b>     |
| <b>Appendix 7: Medium Term Financial Plan 2012 - 2018</b>  | <b>51</b>     |
| <b>Appendix 8: Three Annual Update Plans Spreadsheet 2014- 2015</b>  | <b>54</b>     |
| <b>Appendix 9: EE Annual Update Plans Spreadsheet 2014-2015</b>  | <b>55</b>     |
| <b>Appendix 10: Vodafone O2 Annual Network Update Plans Spreadsheet 2014-2015</b>  | <b>56</b>     |

## INTRODUCTION

- 1 The purpose of the Stockton on Tees Infrastructure Strategy (IS) and Schedule (ISc) is to outline the key infrastructure requirements needed to support the scale of growth put forward in the Regeneration and Environment Development Local Plan (RELP) as well as the adopted Core Strategy (CS).
- 2 The Strategy also supports the Community Infrastructure Levy. For this purpose the Strategy and Schedule is intended to demonstrate that there is a need for a wide variety of infrastructure improvements – it is not intended to form the Regulation 123 List, nor be exhaustive.
- 3 Paragraph 162 of the NPPF states that Local planning authorities should work with other authorities and providers to:
  - assess the quality and capacity of infrastructure for transport, water supply, wastewater and its treatment, energy (including heat), telecommunications, utilities, waste, health, social care, education, flood risk and coastal change management, and its ability to meet forecast demands; and
  - take account of the need for strategic infrastructure including nationally significant infrastructure within their areas.
- 4 With specific regards to planning for infrastructure, the framework clearly sets out that local authorities should plan positively for the development and infrastructure required in the area to meet the objectives, principles and policies for the local frameworks (Paragraph 157).
- 5 In addition, paragraph 177 indicates that in order to ensure that there is a reasonable prospect that planned infrastructure is deliverable in a timely fashion it is equally important that local planning authorities understand district-wide development costs at the time their Local Plans are drawn up.
- 6 The Infrastructure Strategy forms part of the evidence base which underpins the Regeneration and Environment Local Plan and is submitted for Examination alongside it.
- 7 The ISc contains information on who will provide the infrastructure and when it will be provided. It also includes information, where available, on
  - Infrastructure needs and costs
  - Phasing of development
  - Funding sources
  - Responsibilities
- 8 This Strategy considers Infrastructure under the following general headings:
  - Transport and Accessibility
  - Education
  - Health
  - Libraries
  - Cemeteries and Crematoria
  - Green Infrastructure
  - Water Supply, Waste Water Management, Flooding and Surface Water Management
  - Energy Supplies
  - Emergency Services
  - Community Sports and Leisure Facilities

- Minerals and Waste Management

### **Core Strategy Infrastructure Strategy**

- 9 The adopted Core Strategy Infrastructure Strategy (March 2010) identifies and considers and sets out the position in the Borough of five key areas of infrastructure provision:
- Transport
  - Education
  - Health Provision
  - Provision of Utilities
  - Green Infrastructure and other Community Facilities
- 10 In preparing that Infrastructure Strategy, the Council engaged in discussions with key infrastructure providers in order to ensure that plans were in place to deliver the necessary infrastructure, which would underpin the planned development.
- 11 This document seeks to identify what is available and what is needed to implement the allocations and proposals, and is based on the information currently available. It is a 'live' document and will respond and adapt to changing needs and circumstances as the Regeneration and Environment Local Plan progresses towards Examination. It also rolls forward the information and narrative in the existing Core Strategy Infrastructure Strategy published to support the Core Strategy in 2010, and the Consultation Draft Infrastructure Strategy in 2012.

### **Regeneration and Environment Local Plan: Spatial Strategy and Allocations**

- 12 The Regeneration and Environment Local Plan brings together the planning policies and allocations intended for three separate documents:
- The Regeneration DPD:
  - The Environment DPD: Issues and Options
  - Yarm and Eaglescliffe Area Action Plan: Issues and Options
- The document also includes the outcome of the Core Strategy Review (Planning for Housing consultation) undertaken during 2011 and 2012.
- 13 The Regeneration and Environment Local Plan contains the policies to shape development in Stockton on Tees up to 2030. It identifies sites for housing, employment, transport infrastructure and key gateway and regeneration sites, and sets out a suggested approach for each of them.
- 14 Sites are allocated in Stockton to deliver the adopted housing spatial strategy as far as possible and subsequently allocates sites and re-affirms planning commitments that can deliver regeneration objectives and support disadvantaged communities, satisfy housing need and demand identified in the Tees Valley and Strategic Housing Market Assessment, and provide for sustainable communities with an appropriate and aspirational housing need.
- 15 To that end, new housing sites are allocated at:
- Victoria Estate
  - Boathouse Lane
  - Queens Park North

- Swainby Road
- Land off Albany Road
- North of Junction Road
- South of Junction Road, Norton
- Darlington Back Lane
- Yarm Road
- Abbey Hill, Norton
- Somerset Road, Norton
- South of Kingfisher Way, Bowesfield
- Harrowgate Lane
- Yarm Back Lane
- Leeholme Road
- Land off Cayton Drive
- Queens Avenue

16 The approach to employment sites reflects the adopted Core Strategy, and no new allocations are proposed in the document.

17 In March 2011, the Government announced a new wave of enterprise zones, with a Tees Valley Enterprise Zone being approved shortly after. There are 12 individual Enterprise Zones within the Tees Valley; three of those are within the Borough and these are:

- Belasis Business Park – Where new business will receive business rate relief and should be focused on advanced manufacturing and engineering, chemicals, and renewable energy;
- North Shore – Where new business should focus on the digital economy and will receive business rate relief;
- New Energy & Technology Park (Seal Sands) – Which will be focused on Renewable Energy, Chemicals, Advanced Engineering. Proposals on this site will benefit from an enhanced capital allowance.

However, it should be noted that these do not include new site allocations.

## **TRANSPORT AND ACCESSIBILITY**

---

**Planning Policy: RELP Policy T1 Protecting and Taking Up Opportunities for the Use of Sustainable Modes of Transport; Policy T2 Widening Transport Choice; Policy T3 Highways Infrastructure; and Policy T4 Local Parking Standards and RELP Policies SP4 Infrastructure Delivery; SP5 Infrastructure and Development; and SP6 Developer Contributions**

---

**Main Responsibility for Delivery: Stockton on Tees Borough Council, Highways Agency, Rail Operators, Bus Operators, Network Rail and Private Sector Developer Contributions**

---

## Road Network

- 18 There are 836 km of adopted highway within the Borough of Stockton on Tees has responsibility for non-trunk roads, whereas the Highways Agency is responsible for the A66 and A19 – part of national Strategic Road Network (SRN). The cumulative impact of development in Stockton over the life of the plan (to 2030) indicates major impacts on sections of the SRN and the local road network, and that impacts will also be felt upon highways in adjacent authority areas.
- 19 In allocating housing sites and reviewing and allocating employment sites, detailed investigation work and modelling has revealed the stresses and strains on the local and strategic highway network. This, in combination with the highway works required for individual planning applications on housing allocations in Yarm, Wynyard and West Stockton presents a picture of the highways solution to accommodate the envisaged growth. The main schemes are set out in the Infrastructure Schedule and see works at A689 junction at Wynyard, Elton Interchange on the A66, Yarm Back Lane/Darlington Back Lane junction improvements, Durham Road and Harrowgate Lane Junction Improvements, Ingleby Barwick and Portrack Relief Road.
- 20 The costs and timescales for these projects are good estimates but subject to change in the future, particularly those after 2020/21, and ongoing negotiations in respect of the sites at Harrowgate Lane and Yarm Back Lane may well see the structure, timing and costs of the highway schemes change in later iterations of the Infrastructure Schedule.
- 21 The Tees Valley Economic and Regeneration Statement of Ambition produced by Tees Valley Unlimited, the most recent vision for the Tees Valley Economy, highlights the important role that transport will play in facilitating growth.
- 22 Beyond the need to ensure that rail and road links between the Tees Valley and the rest of the Country are enhanced, is the need for better local connectivity. Both residents and visitors should with ease, be able to access employment, education, healthcare, retail and leisure facilities, by public transport as well as private vehicles.
- 23 Local Authorities, business and other public sector leaders in the Tees Valley, through Tees Valley Unlimited have prioritised three Government transport challenges, and those are to:
- Improve the journey and experience of transport users of urban, regional and local networks, including interfaces with national and international networks;
  - Improve the connectivity and access to labour markets of key business centres; and
  - Deliver quantified reductions in greenhouse gas emissions within cities and regional networks, taking account of cross-network policy measures.
- 24 The Statement of Transport Ambition for the Tees Valley seeks to deliver on those objectives and sets out that:
- There will be continued investment in our bus network alongside the 20 or so routes that will benefit from the Tees Valley Bus Improvement Scheme in the next five years, examining cost effective ways to provide linkages to the core commercial routes that will benefit from this investment, and developing an integrated smart ticketing system alongside other partners in the North East; (*Tees Valley Bus Improvement Scheme*)
  - There will be continued work with the rail industry to secure the development of Tees Valley Metro to use the rail network in a much more efficient way to connect our main centres, service the new industries and develop strategic park and ride opportunities.

We will expect greater involvement in the negotiation of future rail franchises in order to achieve this by providing services that better meet the needs of future users rather than relying on historic patterns of demand and scheduling; (*Tees Valley Metro*)

- There will be continued effort to provide targeted highway infrastructure investment to support specific development proposals and improve the management of the strategic road network as part of a joint development plan agreed with the Highways Agency; and
- There will be a continued effort to enhance links to and from our national and international gateways including Teesport and Durham Tees Valley Airport.

25 The Tees Valley does not suffer from widespread traffic congestion to the same extent as some city regions; there is congestion on localised sections of the local and trunk road networks. It is evident on the major critical routes such as at the A19-A66 interchange encompassing the Tees flyover and links to Middlesbrough, A19 south of Wynyard, and the A1053 access to Teesport and important arterial roads.

26 Of particular significance is the congestion on the A19 northbound carriageway exacerbated by traffic accessing the Wynyard Development.

27 Funding has been secured towards the delivery of the first phase of the Network Management Strategy, and used by the Highways Agency to install traffic lights at five entry slip roads along the A19 and the A66. This has enabled identified housing growth to be delivered, that might otherwise have been delayed due to impacts on the strategic network.

### **Local Highway Network**

28 The Stockton on Tees Local Transport Plan 3 (LTP3) (2011 – 2016) sets out the Borough's transport strategy and delivery plan. The Strategy sets out the broad terms of how transport affects the residents and transport users in the Borough and what the Council and partners are to do to address the transport related issues. The strategy has three separate elements: The Tees Valley Transport Strategy: 'Connecting the Tees Valley – Statement of Transport Ambition' (2011-2021), the Stockton on Tees Borough Transport Strategy and the Area Transport Strategies.

29 Based on the future development proposals, the Tees Valley Area Action Plan and the Implementation Plan identifies the likely areas of congestion on the local highway network and mitigation measures required to facilitate economic growth and ensure that the strategic road network remains uncongested.

### **River Tees North Bank Road Infrastructure (Portrack Relief Road)**

30 In 2008, the Stockton Middlesbrough Initiative commissioned the 'River Tees North Bank Road Infrastructure Structure Feasibility Study' which identified a potential highway link between Marston Road and the A1032 Newport Bridge Approach Road. The Tees Valley Area Action Plan has identified the A19(T) between the A66(T) and A1046 as one of the heavily congested roads in the region with both existing and future capacity constraints. The Relief Road includes the creation of a 1.3 km highway link along the former Billingham Beck Branch Railway between Marston Road and A1032 Newport Bridge Approach Road. This scheme would alleviate pressure on the Strategic Road Network and enable the Green Blue Heart to be delivered, as well as facilitating the development of other schemes in the vicinity. This funding for this project is uncertain, but current plans look the Community Infrastructure Levy and the LEP for funding.

## **Bus Services**

- 31 Arriva North East Limited and Stagecoach on Teesside provide the majority of scheduled bus services within the Borough. The remaining services are provided by number of smaller operators including Compass Royston Travel Ltd, Jayline Travel, Leven Valley Coaches and Scarlet Band.

## **Rail Services**

- 32 The Borough has rail stations at Stockton, Eaglescliffe, Allens West, Yarm, and Billingham and Teesside Airport. First Group, Grand Central and Northern Rail provides local and national rail services, and connects the Borough with Middlesbrough, Redcar, Saltburn, Darlington, Hartlepool, Sunderland, Newcastle and Carlisle, amongst other destinations.

## **Tees Valley Rail Improvement Scheme**

- 33 This project continues to be the main focus for future rail enhancements in the area. The scheme will deliver improved service frequency and station improvements, additional capacity and improved rolling stock. Early schemes have seen a staffed ticket office, shelter and passenger information screens at Eaglescliffe and a new footbridge at Thornaby.

## **Tees Valley Rail Freight Transport**

- 34 There is committed investment for rail infrastructure improvements in the Tees Valley to ensure that the network is capable of accommodating 9'6" freight containers. This involves platform alterations and changes to rail signals with the largest single scheme being the partial reconstruction of the overbridge at Dinsdale Rail Station (Darlington).

## **Tees Valley Bus Network Improvements**

- 35 This is a comprehensive series of bus priority measures, improved passenger waiting facilities, consistently high quality specification for vehicles, and measures to improve information and ticketing on core bus routes across the Tees Valley. This scheme had final approval from the DfT in June 2012 confirming that £37.5 million of central Government funding (£56.7m in total) would be made available. This is now being delivered over a five year period to 2015. This investment is being focused largely on the core, frequent and commercially provided tier of the hierarchical bus network, to bring about a quality, stable and sustainable system that offers an effective alternative to the private car. However, all services will benefit from the measures.

## **Footpaths and Cycle Routes**

- 36 The availability of convenient and attractive footpaths, cycle paths and bridleways contribute to achieving sustainability and transport objectives, as well improving health and well-being. The provision of an attractive choice of transport modes which represent a realistic alternative to the private vehicle for accessing services, jobs and other community facilities, as well as providing opportunities for activity based tourism is therefore vital.



**Table T1 Public Rights of Way by Parish**

| <b>Parish</b>   | <b>Route Type</b> | <b>Length (m)</b> |
|-----------------|-------------------|-------------------|
| Aislaby         | Footpath          | 11,720            |
|                 | Bridleway         | 0                 |
| Billingham      | Footpath          | 5,405             |
|                 | Bridleway         | 1,200             |
|                 | BOAT*             | 1,450             |
| Carlton         | Footpath          | 7,365             |
|                 | Bridleway         | 0                 |
| Castlelevington | Footpath          | 2,820             |
|                 | Bridleway         | 2,650             |
| Eaglescliffe    | Footpath          | 10,715            |
|                 | Bridleway         | 0                 |
| Elton           | Footpath          | 7,310             |
|                 | Bridleway         | 0                 |
| Grindon         | Footpath          | 16,920            |
|                 | Bridleway         | 6,280             |
| Hilton          | Footpath          | 3,570             |
|                 | Bridleway         | 4,350             |
| Ingleby Barwick | Footpath          | 3,700             |
|                 | Bridleway         | 5,700             |
| Kirklevington   | Footpath          | 7,250             |
|                 | Bridleway         | 1,735             |
| Longnewton      | Footpath          | 8,700             |
|                 | Bridleway         | 2,050             |
| Maltby          | Footpath          | 8,565             |
|                 | Bridleway         | 0                 |
| Newsham         | Footpath          | 6,190             |
|                 | Bridleway         | 2,750             |
| Preston         | Footpath          | 1,730             |
|                 | Bridleway         | 150               |
| Redmarshall     | Footpath          | 3,875             |
|                 | Bridleway         | 0                 |
| Stillington     | Footpath          | 2,570             |
|                 | Bridleway         | 0                 |
| Stockton        | Footpath          | 30,185            |
|                 | Bridleway         | 2,500             |
| Thornaby        | Footpath          | 4,863             |
|                 | Bridleway         | 615               |
|                 | BOAT*             | 620               |
| Whitton         | Footpath          | 2,130             |
|                 | Bridleway         | 1,170             |
| Wolviston       | Footpath          | 1,380             |
|                 | Bridleway         | 0                 |
| Yarm            | Footpath          | 7,675             |
|                 | Bridleway         |                   |

\*BOAT - Byway Open to All Traffic

- 37 The Council's Green Infrastructure Strategy identifies a number of Strategic Access Routes which, in combination with the network of local paths and routes, are likely to be used for every day journeys to work, school or the shops as well as for recreational walking, cycling and horse-riding. The Green Infrastructure Strategy also highlights that there are a number of significant gaps in these access networks which reduce their connectivity and ability to function as recreational routes and alternatives to other modes of transport. The Green Infrastructure

Strategy Delivery Plan identifies extensions and accessibility improvements to these routes to address these issues. The Stockton Rights of Way Improvement Plan 2008 – 2018 seeks to create a ‘joined up’ network of paths across the Borough – it is one of the second Local Transport Plan. Whilst the Council with partners will seek to improve the right of way network, connections to networks from individual sites would be matter for negotiation on a site by site basis.

## **EDUCATION**

---

**Planning Policy: Core Strategy Policy CS6.4 Community Facilities and RELP Policies SP4 Infrastructure Delivery; SP5 Infrastructure and Development; and SP6 Developer Contributions**

---

**Main Responsibility for Delivery: Stockton on Tees Borough Council and Private Sector Developers/Providers**

---

- 38 It is the responsibility of Stockton on Tees Borough Council to provide sufficient school places for resident children and young people. The School Organisation Plan 2013 is the latest document which provides information about the schools maintained by the Council. It sets out the number of places available in schools in each of the Borough’s schools and school planning area and forecasts the number of places required to 2017.
- 39 The Borough is split into six Schools Planning Areas and within those areas are sixty primary schools, twelve secondary schools, three colleges and five special education schools. The schools and colleges are listed at Appendix 1 and the schools planning areas are set out below:
- Billingham and Wolviston
  - North Stockton
  - Central Stockton
  - Thornaby
  - Ingleby Barwick
  - Eaglescliffe and Yarm
- 40 Appendix 2 is a map showing the Primary Schools Planning Area and Appendix 3 shows the corresponding PANS for schools in that area. Appendix 4 shows the Secondary Schools Planning Area and Appendix 5 shows the corresponding PANS for those schools. The schools ‘PAN’ in each year group that the Council has agreed will be admitted, and not necessarily the capacity. Appendix 6 sets out the range of Early Years Provision.

### **Population Growth and Projected Needs**

- 41 The latest round of school place planning is informed by projected population growth provided by Tees Valley Unlimited – the local the private and public sector Local Enterprise Partnership.
- 42 The projected population growth are based on birth records, are adjusted to reflect historical patterns of movement, and includes pupil yield numbers from both approved housing development and the phasing of the building of homes and in some cases, any planned for strategic housing sites and their proposed pupil yield numbers. These figures are refreshed by TVU once other housing developments are approved.

## Stockton's Strategy for Schools

- 43 The Council had ambitious plans to transform educational facilities across the Borough as part of the Building Schools for the Future Programme and Primary Capital Programme. However, as resources are restricted, attention has been re-focused towards condition and capacity issues.

The key aims of the schools strategy for Stockton are now:

- Provide sufficient places across the Borough and have between 5-10% surplus spaces to:
    - Provide every primary pupil a place within 2 miles
    - Provide every secondary pupil a school place within 3 miles
  - Ensure that schools are maintained in a good condition, with maintenance work undertaken
  - Identify opportunities to improve the school stock
- 44 Further information and details are provided in Stockton's Children, Education and Social Care, School Organisation Plan 2013.

## Schools Provision in the Borough

- 45 The Borough straddles the River Tees which forms the boundary between two Anglican diocesan areas and two Roman Catholic dioceses, and consequently 12 secondary schools are voluntary aided. There are a variety of schools in the Borough and they are listed in Table ED1 below

**Table ED1: Number and Type of Schools in Stockton on Tees**

| Type of School                                | Primary   | Secondary |
|---|-----------|-----------|
| <b>Community</b>                              | 35        | 4         |
| <b>Church of England Voluntary Controlled</b> | 4         | 0         |
| <b>Church of England Voluntary Aided</b>      | 5         | 1         |
| <b>Roman Catholic Voluntary Aided</b>         | 11        | 2         |
| <b>Academy</b>                                | 4         | 5         |
| <b>TOTAL</b>                                  | <b>59</b> | <b>12</b> |

## Early Years Provision

- 46 A free part-time nursery education is available for every three and four year old whose parents wish take and for every eligible two year old that meets Government criteria. This may be in one of the nursery units attached to every primary school in the Borough, in a nursery operated by providers in the private, voluntary and independent sectors or with a childminder.
- 47 Stockton-on-Tees has a robust childcare market with a combination of privately owned and voluntary sector facilities in addition to almost 200 childminders. Three Independent Schools also provide early years places for 3 and 4 year olds. Primary schools continue to play a key

role in ensuring childcare places for school aged children are available, generally delivered in partnership with a Private, Voluntary & Independent provider on a commissioned basis. The Stockton on Tees Childcare Sufficiency Assessment 2014 provides the most recent background and detail in this respect.

### Primary School Places

- 48 The latest census collected in January 2013 showed a total of 15,548 children (Reception to Y6) attending Primary Schools with a total capacity of 16, 791 pupil places – a capacity with 7.4% vacant places. The trend, however is for numbers to rise, work with schools has seen an increase in places to meet demand and allow for surpluses.
- 49 Currently, pupil numbers have been on the rise and many of the primary schools have very few or no empty places in the younger age groups. Some schools have empty spaces in the older age groups however over the next few years this capacity will reduce and will be operating with a limited surplus capacity.
- 50 The Council has agreed with schools increases in PANs for Reception intakes in and it is expected that surplus places will be at 6.1%. Table ED2 shows the pupil projections for the secondary school population 2013 to 2018

**Table ED2: Reception Pupil Projections\* against PAN for Primary School Population in Stockton on Tees 2013 to 2018**

| Year (Spring)    | 2013         | 2014 | 2015 | 2016 | 2017 | 2018 |
|------------------|--------------|------|------|------|------|------|
| Total PANs       | 2373 to 2569 | 2552 | 2614 | 2629 | 2629 | 2629 |
| Reception Pupils | 2418         | 2342 | 2450 | 2458 | 2468 | 2517 |

\* Tees Valley Unlimited June 2013 Primary School Projections including all approved and indicative housing requirements

- 51 Planned investment has taken place across the primary stock to ensure sufficiency of school places in the schools planning areas. Areas of future pressure remain and further investment and expansion will take place.
- 52 The Council currently maintains:
- Fifty-nine primary schools for children aged 4 to 11 of which four are Academies. Thirteen of these receive additional funding (including one school in two of these groups)
    - one for children with complex physical and medical needs
    - two for children with spoken language difficulties
    - four for Key Stage 1 pupils with complex learning needs
    - six for children at Key Stage 2 with a range of learning difficulties
  - One special school for children aged up to 11 with a range of special educational needs (Ash Trees School)
  - One special school for children aged 5 to 16 with a range of emotional and behavioural difficulties (Westlands)

- One pupil referral unit for primary-age pupils temporarily excluded from school (Bishopton Centre at the Green Gates site).

### Secondary schools

- 53 The census of secondary school places in 2013 recorded a total of 10,128 students (Y7 – Y11) attending school with capacity for 12,043 excluding School Sixth Form places (15.9% empty spaces). A further 503 pupils attended the two school sixth forms increasing pupil numbers to 10,631. Schools have been remodelled and places reduced accordingly.
- 54 Projections suggest that there should be sufficient places in the Borough's secondary schools but student numbers will begin to rise slowly as the higher numbers of primary pupils begin to move to secondary schools. The projections also suggest that secondary school capacity will need to be increased after 2016/17 as demand for places increases in Year 7. Table ED3 shows the pupil projections for the secondary school population 2013 to 2018.

**Table ED3: Reception Pupil Projections against PAN for Secondary School Population in Stockton on Tees 2013 to 2018**

| Year (Spring)        | 2013 | 2014 | 2015* | 2016 | 2017 | 2018 |
|----------------------|------|------|-------|------|------|------|
| <b>Total PANs</b>    | 2291 | 2225 | 2345  | 2253 | 2253 | 2253 |
| <b>Year 7 Pupils</b> | 1889 | 1945 | 2034  | 2040 | 2174 | 2244 |

\* Tees Valley Unlimited July 2013 Secondary School projections including all approved and indicative housing developments

\*\*Includes new capacity Ingleby Manor Free School

- 55 The Council maintains:
- Ten schools for pupils aged 11 to 16 of which five are Academies. Three of these receive additional funding ( including one school in two of these groups):
    - Three for children at Key Stage 3 and 4 pupils with complex physical and medical needs
    - One for Key Stage 3 and 4 pupils with visual impairment
  - One school for pupils aged 11 to 18
  - One Academy for pupils aged 11 to 18
  - One special school Academy for pupils aged 11 to 18 with a range of complex special educational needs (Abbey Hill School Technology College)
  - One special school for children aged 5 to 16 with behavioural, social and emotional difficulties (Westlands)
  - One pupil referral unit for pupils temporarily excluded from school (Bishopton Centre).

### Education after age 16

- 56 There are currently 500 places available in the sixth forms at Egglecliffe School and Conyers Academy for pupils wishing to study post 16 education programmes. This number of places in schools is proposed to increase by a further 150 as the proposed Ingleby Manor Free School and Sixth Form opens as expected in 2015.

- 57 In addition to School Sixth form provision, learning and skills needs in Stockton are supported by one general Further Education College, one Sixth Form College and four Work Based Learning (WBL) providers offering Apprenticeships and WBL provider offering Foundation Learning. Additionally there are approximately 200 providers delivering education and training in the Stockton Local Authority area.
- 58 The two colleges located within the borough are Stockton Sixth Form College and Stockton Riverside College (SRC), although SRC operates on two sites following its merger with Bede College in Billingham. During 2009, SRC opened the new Bede Campus premises to deliver academic and vocational courses in Billingham.

### **Current Capital Expenditure Plans**

- 59 The Council's latest update for capital expenditure for schools during the period 2012-2018 is set out in the Medium Term Financial Plan and attached at Appendix 7. It shows an overall allowance of £42,095,888. This sum has been set aside for the school investment programme at St Marks Primary, Barley Fields Primary, Christ the King Primary, Junction Farm Primary, St Francis of Assisi Primary, Northfield School, Bewley Primary School, The Glebe, Our Lady of the Most Holy Rosary RC VA Primary, Egglecliffe CE Primary. Of that sum, however, £21,132,660 is identified for Northshore and Thornaby Academies.
- 60 Contributions and the provision of school places has formed part of Section 106 agreements that have been negotiated as part of planning approvals allocated housing sites and ongoing negotiations at Harrowgate Lane and Yarm Back Lane. Speculative development will bring forward discussion on a site by site basis between the Council and prospective developers.

## **HEALTH**

---

**Planning Policy: Core Strategy Policy CS6.4 Community Facilities and RELP Policies SP4 Infrastructure Delivery; SP5 Infrastructure and Development; and SP6 Developer Contributions**

---

**Main Responsibility for Delivery: NHS England; NHS Hartlepool and Stockton-on-Tees Clinical Commissioning Group; North Tees and Hartlepool NHS Foundation Trust Tees, The North East Ambulance Service NHS Foundation Trust Stockton on Tees Borough Council, Private Sector Developers and Others**

---

- 61 NHS Stockton-on-Tees was one of a cluster of four Primary Care Trusts that worked together in the local health economy operating under various shared management arrangements as 'NHS Tees'. Two NHS Clinical Commissioning Groups (CCGs) cover the same area as the four former PCTs; NHS Hartlepool and Stockton CCG and NHS South Tees CCG.
- 62 The four Health and Wellbeing Boards of Hartlepool, Stockton, Middlesbrough and Redcar and Cleveland work with these CCGs and other partners such as NHS Trusts and Mental Health Trusts and Healthwatch organisations in the area. Working alongside Darlington they create a 'Tees Valley' footprint working in partnership on several levels such as Tees Valley Unlimited and the Tees Valley Public Health Shared Service resource, the NHS England local Area Team adopts a Durham Darlington Tees (DDT) footprint in the holding of the NHS national

contracts for primary care providers such as GPs, dentists, optometrists and community pharmacies.

63 NHS Hartlepool and Stockton-on-Tees Clinical Commissioning Group (CCG) is responsible for planning and paying for the services that the public and patients of Hartlepool and Stockton-on-Tees need. It is led by GPs who look after the resident population. In particular, the CCG is responsible for commissioning the following services:

- Mothers and new-borns
- People with need for support with mental health
- People with learning disabilities
- People who need emergency and urgent care
- People who need routine operations
- People with long-term conditions
- People at the end of life
- People with continuing healthcare needs

64 The Durham, Darlington and Tees Area Team of NHS England is currently responsible for commissioning primary care, (which includes GP practices, dentists and opticians), specialised health services, for offender health and some services for armed forces.

#### **Joint Strategic Needs Assessment**

65 The Joint Strategic Needs Assessment (JSNA) prepared for the Tees area by Hartlepool, Middlesbrough, Redcar & Cleveland and Stockton-on-Tees has assessed the current and future health and social care needs Stockton's residents.

66 The JSNA reports that there remain some significant health and wellbeing challenges for Stockton on Tees, and they are that:

- Levels of deprivation are higher and life expectancy is lower than the England average
- There are some marked differences in ward areas where these issues are more pronounced •
- Levels of heart disease, cancer and respiratory illness remain high leading to early death
- There are a number of 'unhealthy' lifestyles which leads to preventable disease.
- Health inequalities continue to exist with the gap in life expectancy between wards continuing to increase.

#### **Joint Health and Wellbeing Strategy 2012**

67 The Stockton on Tees Joint Health and Wellbeing Strategy 2012-2018 (JHWS) sets out how the local health and wellbeing needs, as identified through the Joint Strategic Needs Assessment (JSNA), will be addressed. It focuses on tackling health inequalities and considers the wider determinants of health such as housing, education and the environment.

68 The JHWS is used to guide and support the development of commissioning plans for healthcare, social care and public health services. It is intended to promote integration and partnership working between the commissioners of NHS, social care, Clinical Commissioning Groups (CCG's) and other local services and to ensure that wider interventions to support health and wellbeing such as planning policies, education and community safety are taken into account

#### **Draft Pharmaceutical Needs Assessment 2015**

- 69 Once complete the Pharmaceutical Needs Assessment (PNA) will provide a framework to enable the strategic development and commissioning priorities for community pharmacy and other pharmaceutical services to help meet the needs of the local population. The PNA is a key tool for identifying what is needed at a local level to support the commissioning intentions for pharmaceutical services that could be delivered by community pharmacies and other providers.

### **Pharmaceutical Services**

- 70 Pharmaceutical services in the Borough are provided by 41 pharmacies. In the non-rural areas there is at least one pharmacy within two or three miles of the areas where most people live, work or shop. Services are available seven days per week in around Yarm, Norton and Billingham and Stockton and Thornaby. In the more rural areas, distances to the nearest pharmacies are relatively small. A GP practice in Stillington also provides a rural dispensing service. Based on current provision, there is no indication that future needs that cannot be met through existing provision.

### **GP Practices**

- 71 Stockton currently has 25 GP practices serving 194,800 patients (at 2013), including a specialist practice for people suffering from substance or alcohol abuse. Some neighbourhoods in the north and west of Stockton have significantly further to travel to access GP services than residents of other parts of the Borough. There are no GP facilities in Wynyard. The projected increase in the population would generate demand for an additional 12 GPs, which may well be satisfied through the expansion of existing practices. However, changing patterns of demand, plus the geographical distribution of provision suggests that a planned approach may be required. Infrastructure planning evidence shows that a GP surgery would be required to serve the existing population and new residents in the west of the Borough centred on Harrowgate Lane and Yarm Back Lane. A further GP surgery could be linked to a new hospital planned at Wynyard.

### **Dental Practitioners**

- 72 There are 24 dental practices spread throughout the Borough, but a small concentration in Stockton and then outlying in Billingham, Thornaby Yarm and Ingleby Barwick and thereafter Eaglescliffe, Fairfield, High Leven, Norton and Roseworth. Advice has been given that there is sufficient capacity to accommodate 8,600 patients if all practices were used to full capacity; it is also likely that existing dental practices will have additional capacity for private patients. There is sufficient capacity to meet demand for at least the first half of the local plan period and the Council is advised that this could extend well into the next decade.

### **Secondary Health Care and Ambulance Services**

- 73 North Tees and Hartlepool NHS Foundation Trust provides health care services to a population of approximately 400,000 people predominantly covering an area from Easington in the North, Stockton in the South, Hartlepool in the East and parts of Sedgefield in the West. The Trust employs in excess of 5,500 members of staff across the hospital and community services and has an income of over £270 million (2012/2013). Ambulance Services are provided by the North East Ambulance Service NHS Foundation Trust
- 74 Patient Choice means that some people from further afield choose to use our services. The Trust provides a wide range of health services covering some specialist acute services, a wide range of acute general hospital services, outreach services into community settings and the



full range of community services. It operates from two major hospital sites: the University Hospital of North Tees and the University Hospital of Hartlepool.

- 75 A key element of the Trust Corporate Strategy is the delivery of the Momentum: Pathways to Healthcare programme, established to lead the transformation of the local healthcare system. It was established in partnership with local stakeholders, specifically North Tees and Hartlepool NHS Foundation Trust, Stockton Teaching Primary Care Trust and Hartlepool Primary Care Trust, closely aligned with County Durham Primary Care Trust and the North East Strategic Health Authority. These bodies have now evolved to become the Hartlepool and Stockton-on-Tees Clinical Commissioning Group (HAST CCG), Durham Dales Easington and Sedgfield Clinical Commissioning Group (DDES) and the Local Area Team (LAT).
- 76 The programme continues following the successful implementation of Service Transformation Phase 1 which saw the centralisation of Critical Care, Acute Medical, Complex Surgical and associated support services onto the University Hospital of North Tees site, and the establishment of the Holdforth Unit at the University Hospital of Hartlepool. Phase 2 of the programme will see service transformation with the planning for the Better Care Fund and working toward the development of the New Hospital at Wynyard and associated Primary and Community estate and services.
- 77 Further housing development in the Borough will inevitably lead to pressure on health and health transport services. The future of a new hospital at Wynyard is uncertain, and it is likely therefore that much of this demand will be met by the two hospitals. It will be a decision for the Clinical Commissioning Group in terms of where patients are directed to for secondary care services.

## LIBRARIES

---

**Planning Policy: Core Strategy Policy CS6.4 Community Facilities and RELP Policies SP4 Infrastructure Delivery; SP5 Infrastructure and Development; and SP6 Developer Contributions**

---

### **Main Responsibility for Delivery: Stockton on Tees Borough Council**

---

- 78 The Public Libraries & Museums Act 1964 (the 1964 Act) sets out the statutory duty for all local authorities to provide a comprehensive and efficient library service, set in the context of local need: that is, specifically of those who live, work and study in the local area. To that end Stockton Council is required to meet the Department for Culture, Media and Sports (DCMS) Public Library Standard. Those standards aim to help the Library Authority's statutory duty to provide a "comprehensive and efficient service".
- 79 In 2011, the Council adopted the principle of a differentiated Library Service. This is a hub and spoke model of provision with a core facility in each of the main urban conurbations complemented by community facilities within localities. This means that Town Centre Libraries would provide a wide range of services, and community libraries offering services targeted to the needs of local communities.
- 80 Stockton Central Library is the largest public library, it provides a hub for Stockton on Tees Borough Council's Customer Services Centre and Cashiers, the adult lending library and the children's library. The first floor houses the Reference Library which is the central reference

department for the Borough, the Family History Suite, the Computer Suite which offers free internet access and also the 'Starbooks' cafe. Library conferencing facilities are also open to the public.

81 The Borough's Library and Information Service currently provides:

- 11 Static Libraries
- Mobile Library Service (servicing outlying districts, schools, residential care homes and individuals who are housebound or carers)
- 1 Neighbourhood Centre Library (Ragworth run by the Community Officers)
- 2 Prison Libraries (SLA with HMP OLIS contract)
- 1 Hospital service (using volunteers) at North Tees Hospital
- 1 Bibliographical Service area (Thorndale Centre)

82 The Libraries are as set out below:

- Stockton Central Library and Customer Service Centre, Church Road, Stockton
- Thornaby Library & Customer Service Centre, Wrightson House, Pavilion Shopping Centre, Thornaby
- Thornaby Library, Riverbank Children's Centre, Gilmour Street Thornaby
- Yarm Library, 41 High Street, Yarm
- Billingham Library, Bedale Avenue, Billingham
- Roseberry Library: Roseberry Library in Billingham closed on 15 November 2014, and re-opens Monday 5 January 2015 on the site of the Billingham's former Art Gallery and Council offices.
- Egglecliffe Library: Orchard Parade, Eaglescliffe
- Fairfield Library: Fairfield Road, Greens Lane and Oxbridge Lane.
- Ingleby Barwick Library: Ingleby Barwick Community Campus, Blair Avenue, Ingleby Barwick
- Norton Library: High Street, Norton
- Ragworth Library: Ragworth Neighbourhood Centre St. Johns Way, Ragworth
- Roseworth Library: Redhill Children's Centre on Redhill Road, Roseworth

83 To complement the traditional library services, Stockton operates a free Home Library Service provides materials to people of all ages who are unable to use a Community Library due to illness, disability or frailty. The central Stockton Library Service's Computer Suite has over 40 PCs available for public use. They provide free access to the Internet and email facilities, free access to online enterprise and business resources and information, and various reference sites PCs are available with USB ports and free scanning facilities.

84 The library catalogue is available on line, extend loan periods on borrowed books, reserve items, and download eBooks. The Stockton Library app is free and available for iOS, Android and Blackberry users. Other services available to the public include Picture Stockton – a collection

of local images, Heritage Stockton, family history, reference and research and business information.

## **CEMETERIES AND CREMATORIA**

---

### **Planning Policy: RELP PF3 Community Facilities**

---

#### **Main Responsibility for Delivery: Stockton on Tees Borough Council and Yarm Town Council**

---

- 85 Although there is no legal requirement for a council to provide burial or cremation facilities, the Council has acted as a burial authority for over 140 years. There is no crematorium in Stockton-on-Tees, however, the Council's at Middlesbrough (Teesside Crematorium), Darlington and Hartlepool operate one facility in each town and Memorial Limited operate a private crematorium (Kirkleatham Memorial Park & Crematorium), which serves the Redcar and Cleveland area.
- 86 The Council has five cemeteries and responsibility for the maintenance of nine closed [by Order in Council] churchyards within the Borough. The cemeteries are Durham Road, Oxbridge Lane, Thornaby, Billingham and Egglecliffe Cemetery.
- 87 The Cemeteries 5 Year Improvement Plan 2005 identified a significant need for new burial space in some areas of the Borough. Subsequently, extensions have taken place at Durham Road Cemetery and additional burial sections have opened within Thornaby Cemetery and Billingham Cemetery. Egglecliffe Cemetery and Oxbridge Lane Cemetery have no further capacity for burials in new graves. Capacity, therefore at Durham Road will be affected particularly by the closure of Oxbridge Lane.
- 88 The former Blakeston/Northshore School site has been identified as a potential site for a new cemetery and crematorium. A consultant has been commissioned to produce a feasibility study, which will enable the Council to decide upon a preferred delivery model.
- 89 Yarm Town Council manages their own public cemetery, however, the life expectancy for this site is now critical and given that Egglecliffe Cemetery is now also closed for new interments, it is the Council's intention to explore locations for cemetery land in the Yarm, Egglecliffe and Ingleby Barwick area.

## **GREEN INFRASTRUCTURE**

---

### **Planning Policy: Core Strategy Policy CS6.4 Community Facilities and RELP Policies SP4 Infrastructure Delivery; SP5 Infrastructure and Development; and SP6 Developer Contributions**

---

#### **Main Responsibility for Delivery: Stockton on Tees Borough Council and Private Developer Contributions**

---

- 90 Green infrastructure is a resource that should be planned strategically and delivered in an integrated way across the Borough and the wider Tees Valley. Green infrastructure provision should form an integral part of the investment plans and strategies of those agencies with a remit for the planning and delivery of growth, sustainable development, and environmental management.
- 91 The Stockton-on-Tees Green Infrastructure Strategy was adopted in 2011. The document highlights the existing green infrastructure assets which are significant at the Tees Valley or Borough-scale. It outlines a future vision for the Borough's green infrastructure; sets out a series of strategic objectives; and summaries the delivery mechanisms that can be used.
- 92 The Strategy incorporates nine 'primary' green infrastructure corridors identified within the Tees Valley Green Infrastructure Strategy, with an additional fifteen 'secondary' green infrastructure corridors of significance within the Borough. The Strategy also highlights the importance of local 'green grids' which are important at the local or 'neighbourhood' scale

### **Components of Green Infrastructure**

- 93 The following individual 'components' or 'assets' make up the overall green infrastructure network:

|  |  |
|--|--|
| Amenity space                          | Children's play spaces                           |
| Green corridors                        | Cemeteries and churchyards                       |
| Brownfield sites                       | Allotments and community gardens                 |
| Industrial and commercial sites        | Orchards   |
| Urban parks                            | Farmland   |
| Country parks                          | Green roofs and walls                            |
| Historic parks and gardens             | Cycleways, footpaths and bridleways              |
| Village greens                         | Archaeological sites and other heritage features |
| Public and private gardens             | Civic spaces/public realm                        |
| Nature reserves                        | Trees and woodlands                              |
| Natural and semi-natural habitats      | Outdoor sports pitches and playing fields        |
| Rivers, streams and other water bodies |  |

- 94 Delivery Plan has been developed which seeks to implement the Green Infrastructure Strategy, and to support delivery of other related plans and strategies. It identifies potential projects and activities that could be delivered across the Borough. Some proposals identified on the plans may have already been through the necessary feasibility/consultation stages and some have funding secured; others are outline proposals which would require more detailed planning. As well as securing capital funding it is usually necessary to identify funding to meet future management and maintenance costs.
- 95 The Green Infrastructure Delivery Plan is a 'living' plan which is revised on an on-going basis to respond to current and emerging priorities, and to reflect successful delivery of schemes. The current version of the plan is available on the Council's website, and this will be subject to review during 2015. However, a summary of the current information is given below (references to 'quantity standards for open space provision' are based on information in the Open Space, Recreation and Landscaping SPD).
- 96 Details are provided on an area-by-area basis, but in addition opportunities to deliver the following types of green infrastructure should be explored in all areas of the Borough:

- Allotments/community gardens: no areas within the Borough meet the quantity standards for allotment provision, and there are long waiting lists for allotment plots in many areas.
- Landscape/biodiversity enhancements, including tree planting and creation of new habitats for wildlife.

97 Ingleby Barwick: This area does not yet meet the quantity standards for any type of open space provision.

Due to the limited amount of open space there is considerable pressure on that which is available, and opportunities to extend and develop green infrastructure through new development should be pursued. A circular trail around Ingleby Barwick is being developed which is increasing access to the countryside for all residents. The trail is largely completed around the northern and eastern periphery of Ingleby Barwick, linking together a network of natural greenspaces. However, there are some significant 'missing' links that need to be addressed to complete the trail within the River Tees and River Leven corridors, with the potential for these to be linked to other landscape and biodiversity enhancements, and developments which will increase the recreational value of the countryside in these areas.

New parks and green spaces have been provided at Romano Park, Windmill Park, Sober Hall and The Rings. Together with other areas of urban open space these should be further developed and enhanced where feasible.

98 Thornaby: This area does not meet the quantity standards for outdoor sports facilities, play/young people's areas and allotments.

In recent years improvements have been carried out at greenspaces such as Village Park and Harewood Pleasure Gardens, and new or improved play areas provided at locations such as Victoria Recreation Ground, Mary Street and Harold Wilson Recreation Ground. However, there remains scope for further improvements to parks and play provision in the future.

The Thornaby Trail is largely complete, although there is a need for the route to be signposted and promoted. This may be linked to the development of other trails and projects under the River Tees Rediscovered Programme, and the development of a bridleway network to the south of Thornaby

99 Eaglescliffe: This area does not meet the quantity standards for natural greenspace, play/young people's areas and allotments.

The most significant open space in this area is Preston Park and recent developments include the provision of a major new skate park, a large play area, improved pathways into the park and to the riverside, and the restoration of the walled garden. Further improvements are proposed, to improve access, enhance the visitor experience, and conserve/enhance the park landscape

In recent years new or improved play areas have been delivered at Amberley Way, Leven Close, Kingsmead and St Margarets. Opportunities to further enhance provision for children and young people should be explored in future.

Access to the countryside and other areas of natural greenspace is limited. Opportunities should be pursued to develop the access network to the west of Eaglescliffe, including linkages to Coatham Wood. Development of access within the River Tees corridor is important, including improvements to the Teesdale Way.

- 100 Yarm: This area does not meet the quantity standards for parks and gardens, natural greenspace, play/young people's areas and allotments.

In recent years new and improved play areas have been provided in Leven Park and at the Meadowings. Further enhancements to existing open space should be pursued where possible.

The development of the countryside footpath and bridleway network around Yarm is important.

- 101 Billingham: This area does not meet the quantity standards for parks and gardens, amenity green space, play / young people's areas and allotments.

John Whitehead Park, the town's major urban park, has seen significant developments in recent years. Elsewhere in Billingham the development of play areas, informal sports and kick about areas are priorities for development; for example, multi-use games areas are planned for High Grange and Rievaulx Avenue.

The wider Billingham area is well served by countryside sites, most notably Cowpen Bewley Woodland Park, Billingham Beck Valley Country Park, Wynyard Woodland Park. Non-council sites such as RSPB Saltholme and Teesmouth National Nature Reserve also fall within this area. Opportunities to improve and enhance facilities at these sites are being explored, for example, at Wynyard Woodland Park there may be potential to expand the recreational facilities in the northern part of the site, and in all cases there may be scope to diversify the visitor offer.

- 102 Wynyard and Thorpe Thewles: Improving cycle and pedestrian links to these country parks is also a priority. In the case of Wynyard Woodland Park there is a need to improve the 'gateway' into the park from Stockton and Thorpe Thewles. Work is on-going to identify ways in which safe pedestrian and cycle access between Billingham, Cowpen Bewley Woodland Park, Teesmouth NNR and Saltholme can be delivered. This may be achieved in part through the proposed England Coast Path, which should run from the Hartlepool boundary at Greatham Creek to the River Tees.

- 103 Stockton East: This area does not meet the quantity standards for natural greenspace, play/young people's areas and allotments.

Opportunities to enhance open spaces in areas such as Norton, Tilery and Portrack will be explored, with associated access improvements. This includes measures needed to address gaps in outdoor play provision, as well as other projects to improve the amenity value of existing greenspace. The recent regeneration of Blue Hall Recreation Ground has improved open space provision in that part of Norton, while other improvements are planned as part of a proposed housing regeneration scheme south of Norton Avenue.

A Green Infrastructure Action Plan has been prepared for Lustrum Beck, setting out a wide range of potential projects to improve and enhance the beck corridor. In Stockton East the Plan identifies possible access, landscape and biodiversity projects in areas such as Tilery Park and the river corridor downstream through Portrack.

Along the River Tees the Teesdale Way and the Eight Bridges Cycleway are to be developed further. The River Tees Rediscovered Programme provides some opportunities to achieve this. Opportunities should also be explored to deliver new and improved greenspaces along the river corridor at locations such as Portrack, Northshore and Bowesfield. Access improvements to the rights of way network north of Norton should be explored.

104 Stockton West: This area does not meet the quantity standards for natural greenspace, outdoor sports facilities, amenity greenspace, play/young people’s areas and allotments.

There are some large areas of greenspace, especially along the Lustrum Beck corridor and its associated tributaries, such as at Greens Beck and Hardwick Dene. Further enhancement of these natural and amenity greenspaces should be sought, including possible measures which contribute to flood risk management and further develop the area’s network of cycleways and footpaths. A Green Infrastructure Action Plan has been prepared for Lustrum Beck, setting out a wide range of potential projects to improve and enhance the beck corridor downstream from Six Fields, Hartburn.

The area includes Ropner Park, and other sites such as Newham Grange Park, Grangefield Park, Redbrook Park and Bishy Park, which have seen significant enhancements in recent years including new play areas and facilities for older children. Opportunities to deliver similar schemes on other sites should be pursued where possible, especially to address gaps in play provision.

There is a limited public rights of way and cycleway network to the east of Stockton, and opportunities should be sought to improve linkages to the urban area where possible, and deliver better access to countryside sites such as Coatham Wood and Wynyard Woodland Park.

#### Open Space and Built Facilities Audit

105 The 2014 update to the Open Space and Built Facilities Audit for the Borough details how each area of the borough performs against standards at June 2014. Table CLF 1 sets out the latest assessment of open space provision in the Borough.

**Table CLF1: Performance against Quantity Standards for Open Space**

| Type of Space             | Billingham | Thornaby | Ingleby Barwick | Eaglescliffe | Yarm | Stockton East | Stockton West |
|---------------------------|------------|----------|-----------------|--------------|------|---------------|---------------|
| Parks and Gardens         | ↑          | ✓        | ↑               | ✓            | ↑    | ✓             | ✓             |
| Natural Greenspace        | ✓          | ✓        |                 | ✓            |      | ✓             |               |
| Outdoor Sports Facilities | ✓          | ↑        | ↑               | ✓            | ✓    | ↑             | ↑             |
| Amenity Greenspace        | ↑          | ↑        | ↑               | ↑            | ✓    | ✓             | ✓             |
| Play/Young People’s Areas | ✓          | ✓        | ✓               | ✓            | ↑    | ↑             | ↑             |
| Allotments                | ↑          | ↑        | ↑               | ↑            | ↑    | ↑             | ↑             |

✓ = Areas that do meet the quantity standards  
 ↑ = Areas that do not meet the quantity standard

- 106 Whilst the Borough performs well in terms of built facilities there is some marked difference in open space provision.
- 107 New green infrastructure can be provided by Stockton Council, funded or provided by Section 106 agreement through negotiation with developers on a site by site basis or Community Infrastructure Levy funds.

## **WATER SUPPLY, WASTE WATER MANAGEMENT, FLOODING AND SURFACE WATER MANAGEMENT**

---

### **Core Strategy Policy CS10.9 Environmental Protection and Enhancement**

---

#### **Main Responsibility for Delivery: Environment Agency, Northumbrian Water, Anglian Water, and Stockton on Tees Borough Council**

---

#### **Water Supply**

- 108 Northumbrian Water Limited (NWL) supplies the majority of water and operates sewerage facilities in the Borough. The exception to this is at Wynyard Business Park where Hartlepool Water (owned by Anglian Water) has responsibility for water supply.
- 109 Hartlepool Water is responsible for ensuring that the homes and businesses in Hartlepool are supplied with clean drinking water from its groundwater network of eighteen boreholes that are connected to treatment works and storage tanks near Dalton Piercy. The company seeks to ensure that the system is capable of meeting peaks in demand and is reliable and as such they operate approximately ten emergency generators to keep the water flowing. The system of water mains is around 700km in length with pipes ranging from 700mm to 50mm in diameter.
- 110 Both suppliers operate within a five-year investment programme called the Assessment Management Plan (AMP). AMP 5 is now operational and extends from 2010 to 2015. The AMP informs a process and assessment that Ofwat undertakes to determine every five years to set price limits for the water and sewerage companies. This process seeks to ensure that each company has enough money to finance its functions, but are no higher than they need to be to allow efficient companies to run their businesses.
- 111 The Tees Valley Water Cycle Scoping Report was completed in early 2012; it identified the key water infrastructure and water environment constraints that have the potential to impact on growth during the plan period. The Scoping Study concluded there were no showstoppers or potential constraints on housing growth in the study area. In December 2012, the second stage of the water cycle study process looked at the planned growth to 2026, to identify constraints and how they may be resolved
- 112 Stockton on Tees falls within the Kielder Water Resource Zone (WRZ), where Water supplies from Kielder Water are transferred south from the River Tyne to the Rivers Wear and Tees. NWL's Water Resource Management Plan states that the Kielder Water Resource Zone 'remains in surplus of supply to the forecast demands over the whole of the planning horizon' i.e. NWL has calculate that there is sufficient water available in the Kielder WRZ to meet its forecasted population increases. Therefore there is no constraint in available water supply.



## **Wastewater Treatment and Collection**

- 113 The initial assessment indicated that all of the Waste Water Treatment Works (WwTw) in the Borough have some additional capacity with the most notable availability at Billingham WwTW. Carlton & Redmarshall, Kirklevington and Longnewton WwTWs may only be able to accommodate smaller scale developments under current operation.

## **Water Quality**

- 114 Half of the water bodies within the Tees catchment achieved only Poor or Bad biological status in the 2009 River Basin Management Plan. Intensive industry in the area, particularly the lower catchment has had a significant influence on water quality. Under the Water Framework Directive obligations, any proposed developments in Stockton-on-Tees must not contribute to any deterioration in the status/potential of water bodies and, through effective infrastructure design, assist in the achievement of Good ecological and chemical status of water bodies by 2015.
- 115 There are several initiatives already underway or planned to address existing and known water quality issues throughout the region. The Environment Agency, in close liaison with water companies has produced a list of potential schemes that should be undertaken as part of the NEP, to improve water quality throughout England and Wales. A large number of the proposed schemes focus on discharges from WwTW and improving these to meet proposed WFD water quality standards by 2015.
- 116 The programme in the North East is smaller than in other areas and this reflects high levels of investment in the past that has already achieved excellent river and bathing water quality in the region.

## **Ecology and Biodiversity**

- 117 The Teesmouth and Cleveland Coast SPA and Ramsar site and the associated Tees and Hartlepool Foreshore and Wetlands SSSI, Seal Sands SSSI and Cowpen Marsh SSSI lie within Stockton-on-Tees Borough. These sites, along with numerous locally designated sites could potentially be affected by development within the Borough. In addition, the European and nationally designated conservation sites could potentially be affected by increased discharges of treated sewage effluent from development upstream of the Borough.

## **Flood Risk and Surface Water Management**

- 118 The main source of flooding in Stockton-on-Tees is tidal and fluvial from the River Tees and other urban watercourses. There are numerous formal and informal defences adjacent to the River Tees, although these are mainly agricultural defences upstream of Stockton-on-Tees
- 119 Predicted sea level rise suggests potential for some current defences to be outflanked by tidal flooding in the future. This source of flooding can be exacerbated by high river flows in urban watercourses draining to the Tees, when tide-locked. A number of significant tidal floods are on record in the borough, particularly affecting the Greatham Creek and Port Clarence areas.
- 120 With regards to fluvial flooding, Yarm has suffered from significant flooding from the Tees, although improved protection measures were constructed in 1993 and 1995. Lustrum Beck also has a long history of flooding, strongly influenced by insufficient channel capacity and culvert blockages.
- 121 A flood risk mapping study has identified a significant number of properties at risk in the event of defence failure in a 1 in 100 year flood. The River Leven, Billingham Beck, Cowbridge Beck,

The Old River Tees, and Holme Fleet have all been identified as potential sources of fluvial flood risk. In addition, through the urban areas there are almost 300m of culverted watercourse. There are extensive river flood defences provided within the district, with approximately 21km of flood embankments and 200m of other defence structures provided around Yarm and Aislaby, around Eaglescliffe and Thornaby, through the centre of Stockton, and near Cowpen Bewley at Billingham. The Environment Agency has new flood alleviation schemes in the pipeline at Browns Bridge (Lustrum Beck), Halidon Way, Billingham, Yarm (Flood Gate Replacement Scheme) and Port Clarence and Flood Alleviation Scheme and they are due within the period 2016 – 2021

- 122 The 2010 Level 2 Stockton SFRA was produced in accordance with PPS25 and its Practice Guide and followed on from the Level 1 SFRA, also carried out in 2010. The Level 2 SFRA aimed to provide an assessment of the flood risk to the key regeneration locations, by modelling flood extents, depths and hazards for different probability flood events. The resultant mapping was then used to fulfil the requirements of the PPS25 Exception Test, to allow sites to be developed in Flood Zones 2 or 3 where it can be demonstrated that the development provides wider sustainability benefits to the community that outweigh flood risk.
- 123 The 2010 update of the Stockton Strategic Flood Risk Assessment (SFRA) provides the Council's latest assessment of flood risk at key areas where development and regeneration is proposed within the Borough. Whilst the Council have been required to allocate urban extensions to meet the identified housing requirement within the RELP the Housing Spatial Strategy continues to support housing development within the Core Area for the reasons identified within the Core Strategy. In this regard the Council has not abandoned its regeneration aspirations but has acknowledged that there are specific associated deliverability issues and has not taken the majority forward for allocation. For the purposes of the sequential test the Core Area is no longer to be used as the search area but the regeneration and sustainability benefits of sites within the Core Area have been acknowledged.
- 124 The RELP Housing allocations located outside of the Core Area are all within Flood Zone 1 and therefore pass the sequential test. Within the Core Area, Victoria Estate is within flood zone 1, and Queens Park North has a small area of flood zone 2 and 3 evident as Lustrum Beck crosses the site, but this can be avoided in the development of the site. The Boathouse Lane site is located adjacent to the River Tees, and within an area of flood risk. The majority of the site has extant consents for residential development, and the exception test can be passed remainder of the site and the site can be developed.
- 125 Employment sites at Seal Sands, North Tees Pools, Port Clarence, Haverton Hill, Casebourne Site and Billingham Reach have been identified as at risk from flooding and assessed in the Level 2 SFRA: Land allocations for port and river based uses are identified within the RELP at Billingham Reach, Casebourne and Haverton Hill passed the exception test.
- 126 There are numerous formal and informal defences adjacent to the river, although these are mainly agricultural defences upstream of Stockton and the regeneration schemes along the river are undefended. The Level 2 SFRA concluded that some sites were at risk of flooding from the River Tees (Phases 1 and 2 of Bowesfield North, Boathouse Lane and Chandlers Wharf), which would be exacerbated by the predicted effects of climate change. The majority of the Borough lies within FZ1 although there are narrow areas of FZ2 and FZ3 associated with the River Tees and the Lustrum Beck.
- 127 Stockton is supplied with water by Northumbrian Water, falling within the Kielder Water Resources Zone, which has sufficient supply over the whole plan period and Northumbrian Water has calculated that there is sufficient water available in the WRZ to meet its forecasted population increases. Therefore there are no constraints in water supply terms.

## **Planning For Drought**

- 128 Northumbrian Water and Hartlepool Water (Anglian Water) produced Drought Plans in 2013 and 2014. These documents are required to produce the document every three years setting out how sufficient water can be provided for a customer's basic needs.
- 129 Northumbrian Water has reported that there is sufficient water to deal with any severity of drought because of the capacity of Kielder Reservoir. Furthermore, the Kielder Transfer Scheme also ensures that adequate raw water is available to the majority of water treatment works, and the distribution system has the ability to supply water to customers.
- 130 Anglian Water, in its draft Drought Plan, reports that the supply for the Hartlepool Water area is abstracted from a deeply confined aquifer of the Magnesian Limestone, and that historically, there have been no reported issues with low rainfall conditions affecting the availability of supplies.

## **ENERGY SUPPLY**

---

### **Planning Policy: No specific policy**

---

### **Main Responsibility for Delivery: National Grid; Northern Powergrid; Northern Gas Networks**

---

#### **Electricity**

- 131 National Grid, as the holder of a license to transmit electricity under the Electricity Act 1989, has a statutory duty to develop and maintain an efficient, co-ordinated and economical transmission system of electricity and to facilitate competition in the supply and generation of electricity.
- 132 National Grid operates the national electricity transmission network across Great Britain and owns and maintains the network in England and Wales, providing electricity supplies from generating stations to local distribution companies. We do not distribute electricity to individual premises ourselves, but our role in the wholesale market is key to ensuring a reliable and quality supply to all. National Grid's high voltage electricity system, which operates at 400,000 and 275,000 volts, is made up of approximately 22,000 pylons with an overhead line route length of 4,500 miles, 420 miles of underground cable and 337 substations.
- 133 Separate regional companies own and operate the electricity distribution networks that comprise overhead lines and cables at 132,000 volts and below. It is the role of these local distribution companies to distribute electricity to homes and businesses.
- 134 To facilitate competition in the supply and generation of electricity, National Grid must offer a connection to any proposed generator, major industry or distribution network operator who wishes to generate electricity or requires a high voltage electricity supply. Often proposals for new electricity projects involve transmission reinforcements remote from the generating site, such as new overhead lines or new development at substations. If there are significant demand increases across a local distribution electricity network area then the local network distribution operator may seek reinforcements at an existing substation or a new grid supply

point. In addition National Grid may undertake development works at its existing substations to meet changing patterns of generation and supply.

### **Electricity Transmission**

135 National Grid's high voltage electricity overhead transmission lines / underground cables within Stockton on Tees Borough Council's administrative area:

- 4VC line – 400kV route from Norton substation in Stockton to Osbaldwick substation in York
- 4TF line – 275/400kV route from Hawthorn Pit substation in Durham to Norton substation in Stockton
- XC line – 275kV route from Spennymoor substation in Durham to Norton substation in Stockton
- YYJ/N line – 400kV route from Saltholme substation in Stockton to Norton substation in Stockton
- ZZA line – 275kV route from the 4TH line in Hartlepool to Lackenby substation in Redcar and Cleveland via Saltholme substation in Stockton

And the following substations:

- Norton substation – 400kV, 275kV & 132kV
- Saltholme substation – 275Kv

### **Gas Transmission**

136 National Grid owns and operates the high pressure gas transmission system in England, Scotland and Wales that consists of approximately 4,300 miles of pipelines and 26 compressor stations connecting to 8 distribution networks. National Grid has a duty to develop and maintain an efficient co-ordinated and economical transmission system for the conveyance of gas and respond to requests for new gas supplies in certain circumstances.

137 New gas transmission infrastructure developments (pipelines and associated installations) are periodically required to meet increases in demand and changes in patterns of supply. Developments to our network are as a result of specific connection requests e.g. power stations, and requests for additional capacity on our network from gas shippers. Generally network developments to provide supplies to the local gas distribution network are as a result of overall demand growth in a region rather than site specific developments.

### **Gas Transmission Assets**

138 Gas transmission pipelines have been identified on the following routes:

- FM06 Little Burdon to Billingham ICI
- FM06 Elton to Pickering
- FM06/13 Cowpen Bewley to Teesside Terminal
- FM13 Bishop Auckland to Yafforth

### **Gas Distribution**

139 National Grid also owns and operates approximately 82,000 miles of lower-pressure distribution gas mains in the north west of England, the west Midlands, east of England and north London - almost half of Britain's gas distribution network, delivering gas to around 11 million homes, offices and factories. National Grid does not supply gas, but provides the networks through which it flows. Reinforcements and developments of the local distribution

network generally are as a result of overall demand growth in a region rather than site specific developments. A competitive market operates for the connection of new developments. There are no identified gas or electricity supply issues.

## **EMERGENCY SERVICES**

---

### **Planning Policy: Core Strategy Policy CS 6.1 Community Facilities**

---

#### **Main Responsibility for Delivery: Cleveland Fire Brigade and Cleveland Police**

---

##### **Fire and Rescue**

- 140 Cleveland Fire Brigade provides fire and rescue services in Stockton. There are four main fire stations in the Borough in Billingham, Stockton, Thornaby and Yarm.
- 141 The main fire station in Stockton provides is a hub where community safety staff and fire fighters work together to provide a one-stop-shop for all fire services. The Station will be fully refurbished in 2018. Thornaby Fire Station provides full time fire and rescue services to the community, it also provides the water rescue team and vehicle workshops, and it is planned to be re-built at a different location in the future. The Fire Authority has just received confirmation of capital grant funding awarded by Central Government to assist in this matter. Billingham fire station has been fully refurbished and provides full fire and rescue services as well as providing industrial fire cover to a large number of Control of Major Accident Hazards (COMAH). Yarm Fire Station also operates full time but uses retained fire fighters, it also supports the work of Thornaby Fire Station. Essential maintenance work will take place by the end of March 2015. There are no plans to provide further fire and rescue facilities during the plan period.

##### **Police**

- 142 Cleveland Police operate from Police Stations/Contact Centres at:
- Stockton District H.Q., Thistle Green, Stockton Town Centre
  - Billingham Police Station, New Town Centre, Billingham
  - Newtown Neighbourhood Police Office, Newtown Community Resource Centre, Durham Road
  - Thornaby Police Station, Millbank Lane, Thornaby
  - Norton Grange Community Centre, Somerset Road, Norton Grange
  - Yarm Police Station closed in May 2013 and the area is being policed from Thornaby.
- 143 Changes in the way in which people interact with the police, means that the need for a traditional police station are also changing, the force is exploring new communication channels and use Beat Surgeries which are generally held in public buildings within local communities. Policing for new development would be assessed by the service on a site by site basis.

## COMMUNITY, SPORTS AND LEISURE FACILITIES

---

**Planning Policy: Core Strategy Policy CS6.2 Community Facilities and RELP Policies SP4 Infrastructure Delivery; SP5 Infrastructure and Development; and SP6 Developer Contributions**

---

**Main Responsibility for Delivery: Stockton on Tees Borough Council, Tees Active and Private Developers/Providers**

---

- 144 Stockton has a good range of leisure and community facilities across the Borough available for community use. There are 48 community centres in various parts of the Borough
- 145 There are 10 parks each having open space/football pitches to hire, with a variety of ancillary facilities, five with changing facilities and three with showers. Tees Active is a charitable social enterprise and works closely with Stockton-on-Tees Borough Council to provide leisure services. It manages leisure centres in Stockton-on-Tees, Billingham Forum, Splash, Thornaby Pavilion, Thornaby Pool and Tees Barrage International White Water Centre. The leisure centres provide opportunities for wet and dry sports. There are 13 local leisure centres and sports facilities run by private providers. The Tees Barrage International White Water Centre is an artificial white water course situated on the north bank of the River Tees which provides for a variety of water sport activities.
- 146 There are two main theatres in the Borough namely Billingham Forum Theatre and the ARC, and the smaller venues of The Georgian Theatre with The Green Dragon (Music) Studios managed by Tees Music Alliance. The grade II listed Globe Theatre on Stockton High street is being refurbished. .

### **Places of Worship**

- 147 The Council does not hold a database of places of worship, and therefore has an overview of the number and location of such. However, there is no indication that there are any capacity issues. Future demand is difficult to predict with difficulties around lack of accurate data and forecasting. Local communities are likely to provide for growing needs.

## TELECOMMUNICATIONS AND BROADBAND

---

**Planning Policy: RELP Policy SL3 Communications Infrastructure**

---

**Main Responsibility for Delivery: BT with input from Virgin Media Services and Mobile Operators**

---

- 148 British Telecom (BT) owns the UK local access network that connects homes and businesses to its telephone exchanges; its network of copper wires provide the vast majority of broadband Internet and fixed-line telephone services. BT is investing £2.5 billion to roll out superfast broadband to around two-thirds of the country.
- 149 In addition, Broadband Delivery UK - set up to deliver the Government's broadband strategy – have been allocated £530m to bring superfast broadband to the remaining third that won't be

provided for by the broadband market. Local authorities can apply for a share of this funding, which needs to be spent by the end of March 2015, by developing a Local Broadband Plan; the principle is the Government provides 25% to deliver the plan, with 25% from the public sector and 50% from the private sector. TVU and the Tees Valley local authorities have appointed consultants to produce their Local Broadband Delivery Plan for submission to Central Government

- 150 Superfast fibre-optic broadband is now available in some areas also, although this service currently operates on a demand basis, where individual customers pay to receive access to a more speedy broadband service. The coverage for allocated sites in Stockton varies on a site to site basis.
- 151 Openreach - part of the BT Group operating on behalf of all communications providers – are responsible for the physical installation and maintenance of wires and fibres between telephone exchanges and properties. They have a legal obligation to provide a telephone line to all new development, enabling standard broadband access, and will provide the primary infrastructure needed to do so in step with new development, following consultation with developers. There is, however, no legal obligation for superfast broadband to be provided. Nevertheless, existing infrastructure (i.e. copper network ducts) enables a network of cables to be installed, meaning fibre-optic cables can be installed alongside copper wiring in the future, if and when required. In terms of Virgin Media services, and whilst there is no legal obligation upon developers, the Council will encourage a cable connection to each new dwelling.
- 152 Mobile phones and devices work on a network of base stations (i.e. masts), and there are extensive base station sites in the Borough provided by various mobile operators, including:
- Everything Everywhere [Orange and T-Mobile];
  - Telefonica [02];
  - Three; and
  - Vodafone.

A full list of the mobile telecommunications sites is appended at Appendix MT1, MT2 and MT3, which includes details of built sites (that may or may not be taking call traffic), planned sites with planning granted and proposed sites without planning approval. Mobile telecommunications operators provide their own infrastructure, which they are able to do as permitted development using statutory powers. There are no planned new masts in 2014-2015

## **MINERALS AND WASTE MANAGEMENT**

---

**Planning Policy: Tees Valley Minerals and Waste Core Strategy Policy MWC8 (General Locations for Waste Management Sites); Tees Valley Minerals and Waste Policies and Sites DPD Policy MWP1 (Waste Audits); MWP9 Stockton South Household Waste Recycling Centre Area of Search**

---

**Main Responsibility for Delivery: Stockton on Tees Borough Council and Private Operators**

---

- 153 Stockton Council is responsible for strategic management of its municipal waste, including the collection and disposal/recycling of waste from the kerbside. The waste is taken to local

landfill, converted to electricity at the Energy from Waste site at Haverton Hill, recycled locally or processed and sorted before onwards delivery to others for re-use.

- 154 The Joint Tees Valley Minerals and Waste Stockton's minerals and waste planning policies are set out in the adopted Tees Valley Joint Minerals and Waste Development Plan Documents (2011). Two documents; the Core Strategy and Policies and sites documents are the Tees Valley's approach to up to 2026. Evidence in these documents indicates that there is sufficient capacity in existing facilities to accommodate predicted trends in recycling and landfill. However, spatially there is a need for recycling facilities to serve the population in the south of the Borough.

### **Tees Valley Joint Minerals and Waste Development Plan**

- 155 The Minerals and Waste Core Strategy contains the long-term spatial vision and the strategic policies needed to achieve the key objectives for minerals and waste in the Tees Valley. The separate Policies and Sites Development Plan Document, which conforms to it, identifies specific sites for minerals and waste development and sets out policies, which will be used to assess minerals and waste planning applications.
- 156 The Infrastructure Strategy supporting these documents is found in Background Paper No. 7 dated May 2010. This document sets out that the key area of infrastructure provision is transport with some additional requirements relating to Northumbrian Water's role in providing sewage treatment.
- 157 More specifically, in Stockton, a rail connection would be required to service extended facilities at the Haverton Hill site. However, this is the responsibility of the operator at the site and whilst there would appear to be no barriers to implementation, no specific timetable has been agreed for implementation.
- 158 At New Road, Billingham there is a potential for operations here to use rail facilities. This again, would be the responsibility of the operator. It is recognised that although not dependent upon them, any improvement of the wider network could benefit the movement of freight to and from the site onto the general rail system.
- 159 The Strategy acknowledges that improvement works more generally to the rail network arising from minerals and waste developments may benefit the wider network as well as conversely improvements to public transport and the local and strategic highway networks being to the benefit of minerals and waste operations.

### **Local Aggregate Assessment**

- 160 The National Planning Policy Framework (NPPF) requires mineral planning authorities to plan for a steady and adequate supply of minerals by preparing an annual Local Aggregate Assessment, either individually or jointly by agreement with other mineral planning authorities, based on a rolling average of 10 years sales data and other relevant local information, and an assessment of all supply options (including marine dredged, secondary and recycled sources).
- 161 This work is being undertaken by the five Tees Valley authorities, and although the work is in early stages, the indications are that The Tees Valley is able to meet requirements for a 7-year land bank for sand and gravel and 10-year period for crushed rock. Further to this the import of marine dredged aggregates is likely to remain important, and there is capacity to increase supply from wharves within the Tees Valley. Similarly, the production and use of alternative aggregates is likely to remain important but there is likely to be reliance on imports from elsewhere.





## APPENDICES

## List of Schools and Colleges in Stockton on Tees

## Primary Schools

|  |  |
|--|--|
| Bader Primary School<br>Kintyre Drive Thornaby TS17 0BY  | Barley Fields Primary School<br>Lamb Lane Ingleby Barwick TS17 0QP   |
| Bewley Primary School<br>Low Grange Avenue Billingham TS23 3LH   | Billingham South Primary School<br>Belasis Avenue Billingham TS23 1BE  |
| Bowesfield Primary School<br>Northcote Street Stockton-on-Tees TS18 3JB  | Christ the King RC Primary School<br>Tedder Avenue Thornaby TS17 9JP   |
| Crooksbarrow Primary School<br>Petrel Crescent Norton TS20 1SN   | Durham Lane Primary School<br>Amberley Way Eaglescliffe TS16 0NG   |
| Egglecliffe CE VC Primary School<br>Egglecliffe Village Eaglescliffe TS16 9BT  | Fairfield Primary School Glenfield Road Fairfield<br>TS19 7PW  |
| Frederick Nattrass Primary Academy<br>Converted to academy: 01/09/2013<br>Sponsor: Northern Education Trust<br>Darlington Lane Norton TS20 1BZ | Hardwick Green Primary Academy<br>Converted to academy: 01/06/2013<br>Sponsor: Enquire Trust<br>Tithebarrow Road Hardwick Green TS19 8WF |
| Harewood Primary School<br>Eric Avenue Thornaby TS17 7JJ   | Harrow Gate Primary School<br>Converted to academy: 01/09/2014<br>Sponsor: Enquire<br>Piper Knowle Road Hardwick Green TS19 8DE          |
| Hartburn Primary School<br>Adelaide Grove Hartburn TS18 5BS  | High Clarence Primary School<br>High Clarence Middlesbrough TS2 1SY  |
| Holy Trinity Rosehill VA CE Primary School<br>Upsall Grove Fairfield TS19 7QU  | Ingleby Mill Primary School<br>Windmill Way Ingleby Barwick TS17 0LW   |
| Junction Farm Primary School<br>Butterfield Drive Eaglescliffe TS16 0EU  | Kirklevington Primary School<br>Forest Lane Kirklevington Village TS15 9LX   |
| Layfield Primary School<br>Everingham Road Yarm TS15 9TF   | Levendale Primary School<br>Mount Leven Road Yarm TS15 9RJ   |
| Mandale Mill Primary School<br>Thorntree Road Thornaby TS17 8AP  | Mill Lane Primary School<br>Wellington Street Stockton-on-Tees TS18 1QX  |

|   |   |
|---|---|
| Myton Park Primary School<br>Blair Avenue Ingleby Barwick TS17 5BL  | Norton Primary Academy<br>Converted to academy: 01/01/2014<br>Sponsor: Northern Education Trust<br>Berkshire Road<br>Norton<br>TS20 2RD |
| Oakdene Primary School<br>Halidon Way Billingham TS23 3EQ   | Our Lady of the Most Holy Rosary RC VA<br>Primary School<br>Rievaulx Avenue Billingham TS23 2BS   |
| Oxbridge Lane Primary School<br>Oxbridge Lane Stockton-on-Tees TS18 4DA   | Pentland Primary School<br>Pentland Avenue Billingham S23 2RG   |
| Preston Primary School<br>Laurel Road Eaglescliffe TS16 0BE   | Prior's Mill CE Controlled Primary School<br>Clifton Avenue Billingham TS22 5BX   |
| Roseberry Primary School<br>Marsh House Avenue Billingham TS23 2HJ  | Rosebrook Primary School<br>Rudyard Avenue Roseworth TS19 9LF   |
| St Bede's Catholic Academy<br>Converted to academy: 1/12/2013<br>Sponsor: Carmel<br>Green Lane Newtown TS19 0DW | St Cuthbert's RC VA Primary School<br>Parkfield Stockton-on-Tees TS18 3SY   |
| St Francis of Assisi CE Primary School<br>Lowfields Avenue Ingleby Barwick TS17 5GA                             | St Gregory's Catholic Academy<br>Converted to academy: 01/04/2013<br>Sponsor: Carmel<br>Ragpath Lane Roseworth TS19 9AD                 |
| St John the Baptist CE VC Primary Ragworth<br>St John's Way Ragworth TS19 0FB                                   | St John the Evangelist RC VA Primary School<br>Billingham<br>Cowpen Lane Billingham TS23 1LJ  |
| St Joseph's RC Primary School Billingham<br>Low Grange Avenue Billingham TS23 3NN                               | St Joseph's RC VA Primary School Norton<br>Ragworth Road Norton TS20 1HR  |
| St Mark's Elm Tree CE VA Primary School<br>St Mark's Close Fairfield TS19 7HA                                   | St Mary's CE Primary School<br>The Green Long Newton TS21 1DL   |
| St Patrick's RC VA Primary School Stockton<br>Lingfield Road Fairfield TS19 7PL                                 | St Patrick's RC Primary School Thornaby<br>Westbury Street Thornaby TS17 6NE  |
| St Paul's RC VA Primary School<br>Mill Lane Billingham TS22 5LU   | St Thérèse of Lisieux RC Primary School<br>Lamb Lane Ingleby Barwick TS17 0QP   |

|  |  |
|--|--|
| Teesside High School<br>The Avenue Eaglescliffe TS16 9AT           | Glebe Primary School<br>Pulford Road Norton TS20 1QY   |
| The Links Primary School<br>Carnoustie Drive Eaglescliffe TS16 9ES | The Oak Tree Academy<br>Converted to academy: 01/09/2013<br>Sponsor: Northern Education Trust<br>Newham Grange Avenue Newtown TS19 0SE |
| Thornaby CE VC Primary School<br>Baysdale Road Thornaby TS17 9DB   | Village Primary School - Thornaby<br>Windsor Road Thornaby TS17 8PW  |
| Tilery Primary School<br>St Ann's Terrace Portrack TS18 2HU        | Whinstone Primary School<br>Lowfields Avenue Ingleby Barwick TS17 0RJ  |
| Whitehouse Primary School<br>Dunelm Road Elm Tree TS19 0TS         | William Cassidi CE Primary School<br>Stillington Stockton-on-Tees TS21 1JD   |
| Wolviston Primary School<br>The Green Wolviston TS22 5LN           | Yarm Primary School<br>Converted to academy: 01/02/2014<br>Sponsor: No sponsor<br>Spitalfields Yarm TS15 9HF                           |

## Secondary Schools

---

|  |  |
|--|--|
| All Saints Academy<br>Converted to academy: 01/05/2013<br>Sponsor: No sponsor<br>Blair Avenue Ingleby Barwick TS17 5BL                   | Bishopsgarth School Maths and Computing College<br>Harrowgate Lane Stockton-on-Tees TS19 8TF |
| Conyers<br>Converted to academy: 01/02/2013<br>Sponsor: No sponsor<br>Green Lane Yarm TS15 9ET   | Egglescliffe School<br>Urlay Nook Road Eaglescliffe<br>TS16 0LA                              |
| The Grangefield Academy<br>Converted to academy: 01/01/2014<br>Sponsor: Northern Education Trust<br>Oxbridge Avenue Grangefield TS18 4LE | Stockton Riverside College -<br>Bede Sixth Form College<br>Hale Road Billingham TS23 3ER     |
| Ian Ramsey CE Comprehensive School<br>Greens Lane Fairfield TS18 5AJ<br>Converted to academy: 01/12/2014                                 | Northfield School and Sports College<br>Thames Road site Thames Road Billingham TS22 5EG     |
| North Shore Academy<br>Converted to academy: 01/09/2010  | Our Lady and St Bede's RC School<br>Bishopton Road West Stockton-on-Tees TS19 0QH            |

|  |  |
|--|--|
| Sponsor: Northern Education Trust<br>Talbot Street Stockton-on-Tees TS20 2AY   |  |
| St Michael's Catholic Academy<br>Converted to academy: 01/09/2013<br>Sponsor: Carmel<br>Beamish Road Billingham TS23 3DX | St Patrick's Catholic College<br>Baysdale Road Thornaby TS17 9DE |
| Thornaby Academy<br>Converted to academy: 01/09/2010<br>Sponsor: Teesside University<br>Baysdale Road Thornaby TS17 9DB  |  |

### Colleges

---

|  |   |
|--|---|
| Stockton Sixth Form College<br>Bishopton Road West Stockton TS19 0QD | Stockton Riverside College<br>Havard Avenue Thornaby TS17 6FB |
|--|---|

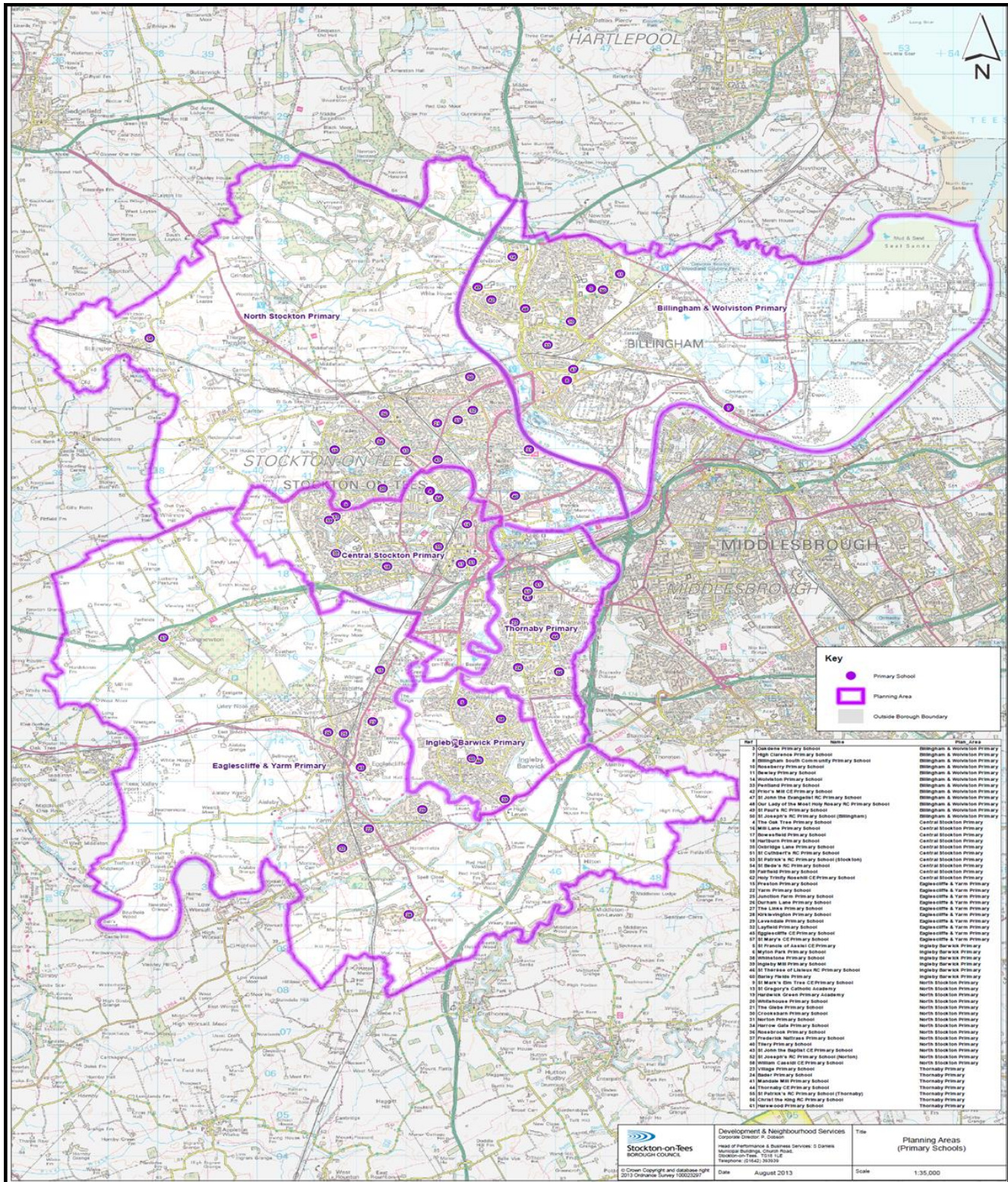
### Special Education Schools

---

|  |  |
|--|--|
| Abbey Hill School Technology College<br>Learning difficulties secondary<br>Converted to academy: 01/08/2013<br>Sponsor: Horizons Specialist Academy Trust<br>Ketton Road Hardwick Green TS19 8BU | Ash Trees School<br>Learning difficulties primary<br>Converted to academy: 1/11/2014<br>Sponsor: Ascent Trust<br>Bowes Road Billingham TS23 2BU  |
| Bishopton Centre<br>(Secondary pupil support)<br>Marsh House Avenue Billingham TS23 3QJ  | Green Gates School<br>(Primary pupil support)<br>Green Gates is the Westlands Primary Department for children who have social, emotional and behavioural difficulties<br>Melton Road Stockton-on-Tees TS19 0JD |
| Westlands School<br>Social, emotional and behavioural difficulties<br>Converted to academy: 01/08/2013<br>Sponsor: Horizons Specialist Academy Trust   | Eltham Crescent<br>Thornaby<br>Stockton-on-Tees TS17 9RA<br>Melton Road<br>Stockton-on-Tees TS19 0JD   |



Map - Primary Schools Planning Areas



## Stockton on Tees - Schools and Published Admission Numbers 2013 to 2014

## Primary Schools

| Billingham and Wolviston              | PAN        | Year       |            |            |            |            |
|---------------------------------------|------------|------------|------------|------------|------------|------------|
|                                       |            | 2013       | 2014       | 2015       | 2016       | 2017       |
| Bewley                                | 60         | 61         | 61         | 60         | 60         | 61         |
| Billingham South                      | 60         | 48         | 51         | 51         | 51         | 51         |
| High Clarence                         | 15         | 16         | 13         | 13         | 12         | 13         |
| Oakdene                               | 45         | 33         | 32         | 32         | 32         | 32         |
| Our Lady Most Holy Rosary RC          | 30         | 30         | 27         | 27         | 27         | 27         |
| Pentland                              | 45         | 45         | 45         | 44         | 44         | 45         |
| Priors Mill CE (VC)                   | 75         | 64         | 71         | 71         | 71         | 72         |
| Roseberry                             | 60         | 61         | 61         | 61         | 61         | 62         |
| St John the Evangelist                | 30         | 24         | 27         | 27         | 27         | 28         |
| St Joseph's RC                        | 30         | 26         | 29         | 29         | 29         | 29         |
| St Paul's RC                          | 30         | 30         | 30         | 30         | 30         | 30         |
| Wolviston                             | 15         | 15         | 17         | 17         | 17         | 18         |
| <b>Billingham and Wolviston Total</b> | <b>495</b> | <b>453</b> | <b>464</b> | <b>462</b> | <b>461</b> | <b>468</b> |

| North Stockton              | PAN        | Year       |            |            |            |            |
|-----------------------------|------------|------------|------------|------------|------------|------------|
|                             |            | 2013       | 2014       | 2015       | 2016       | 2017       |
| Crooksbarrow                | 36         | 36         | 39         | 39         | 39         | 39         |
| Frederick Nattrass          | 30         | 30         | 29         | 29         | 29         | 29         |
| Hardwick Green Academy      | 30         | 31         | 33         | 35         | 37         | 38         |
| Harrow Gate                 | 60         | 58         | 56         | 56         | 56         | 58         |
| Norton                      | 60         | 57         | 57         | 57         | 58         | 59         |
| Rosebrook                   | 60         | 60         | 60         | 60         | 61         | 62         |
| St Gregory's RC Academy     | 30         | 31         | 32         | 32         | 33         | 34         |
| St John's the Baptist CE    | 30         | 28         | 28         | 28         | 28         | 28         |
| St Joseph's RC              | 38         | 40         | 42         | 42         | 42         | 43         |
| St Mark's Elm Tree          | 45         | 44         | 36         | 36         | 37         | 38         |
| The Glebe                   | 55         | 44         | 48         | 48         | 48         | 48         |
| Tilery                      | 45         | 38         | 35         | 35         | 36         | 37         |
| Whitehouse                  | 55         | 50         | 49         | 49         | 48         | 49         |
| William Cassidi CE          | 29         | 29         | 30         | 30         | 31         | 32         |
| <b>North Stockton Total</b> | <b>537</b> | <b>510</b> | <b>506</b> | <b>508</b> | <b>515</b> | <b>526</b> |



| Central Stockton              | PAN        | Year       |            |            |            |            |
|-------------------------------|------------|------------|------------|------------|------------|------------|
|                               |            | 2013       | 2014       | 2015       | 2016       | 2017       |
| Bowesfield                    | 30         | 29         | 28         | 29         | 31         | 32         |
| Fairfield                     | 60         | 60         | 60         | 60         | 60         | 60         |
| Hartburn                      | 75         | 75         | 76         | 76         | 75         | 76         |
| Holy Trinity Rosehill CE      | 60         | 60         | 61         | 61         | 60         | 61         |
| Mill Lane                     | 30         | 30         | 29         | 30         | 29         | 30         |
| Oxbridge Lane                 | 58         | 49         | 55         | 55         | 55         | 56         |
| St Bede's RC                  | 27         | 29         | 29         | 29         | 29         | 29         |
| St Cuthbert's RC              | 30         | 25         | 28         | 29         | 29         | 30         |
| St Patrick's RC               | 40         | 40         | 39         | 38         | 38         | 39         |
| The Oak Tree                  | 60         | 42         | 52         | 52         | 52         | 52         |
| <b>Central Stockton Total</b> | <b>380</b> | <b>350</b> | <b>369</b> | <b>370</b> | <b>367</b> | <b>373</b> |

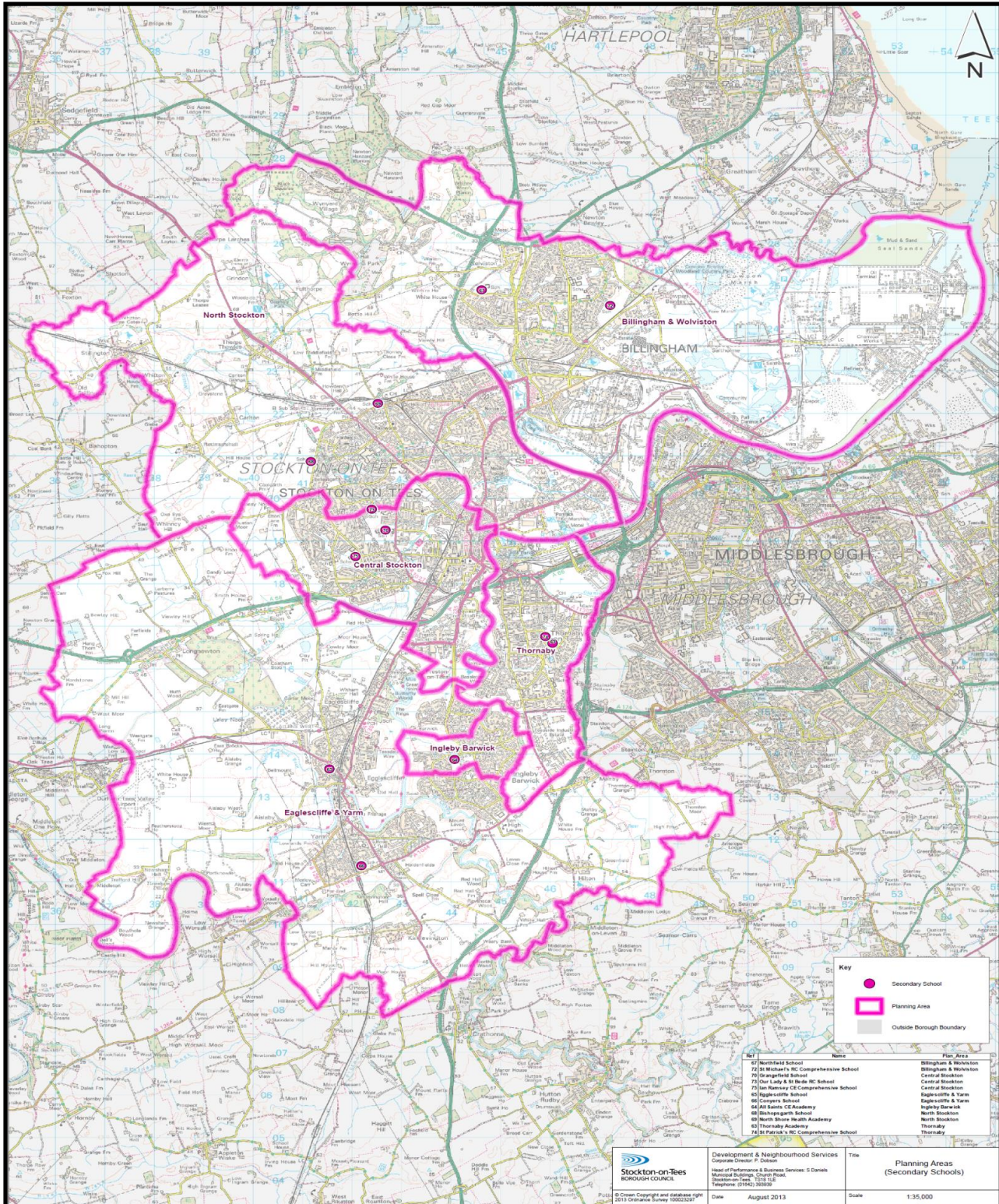
| Thornaby              | PAN        | Year       |            |            |            |            |
|-----------------------|------------|------------|------------|------------|------------|------------|
|                       |            | 2013       | 2014       | 2015       | 2016       | 2017       |
| Bader                 | 60         | 43         | 48         | 48         | 47         | 48         |
| Christ the King RC    | 45         | 36         | 36         | 36         | 36         | 37         |
| Harewood              | 60         | 60         | 62         | 61         | 61         | 62         |
| Mandale Mill          | 45         | 36         | 39         | 41         | 41         | 42         |
| St Patrick's RC       | 40         | 44         | 49         | 49         | 48         | 50         |
| Thornaby CE           | 45         | 45         | 43         | 43         | 43         | 44         |
| Village               | 30         | 30         | 31         | 31         | 31         | 31         |
| <b>Thornaby Total</b> | <b>220</b> | <b>215</b> | <b>224</b> | <b>225</b> | <b>224</b> | <b>229</b> |

| Ingleby Barwick              | PAN        | Year       |            |            |            |            |
|------------------------------|------------|------------|------------|------------|------------|------------|
|                              |            | 2013       | 2014       | 2015       | 2016       | 2017       |
| Barley Fields                | 90         | 90         | 94         | 94         | 95         | 97         |
| Ingleby Mill                 | 90         | 76         | 89         | 89         | 89         | 90         |
| Myton Park                   | 30         | 30         | 33         | 33         | 34         | 36         |
| St Francis of Assisi CE      | 30         | 30         | 40         | 44         | 46         | 50         |
| St Therese of Lisieux RC     | 30         | 28         | 33         | 33         | 33         | 34         |
| Whinstone                    | 90         | 71         | 78         | 77         | 77         | 78         |
| <b>Ingleby Barwick Total</b> | <b>180</b> | <b>159</b> | <b>184</b> | <b>187</b> | <b>190</b> | <b>198</b> |

| Eaglescliffe and Yarm              | PAN        | Year       |            |            |            |            |
|------------------------------------|------------|------------|------------|------------|------------|------------|
|                                    |            | 2013       | 2014       | 2015       | 2016       | 2017       |
| Durham Lane                        | 30         | 24         | 28         | 30         | 32         | 36         |
| Egglecliffe CE                     | 30         | 24         | 29         | 29         | 29         | 29         |
| Junction Farm                      | 30         | 29         | 30         | 30         | 30         | 30         |
| Kirklevington                      | 20         | 11         | 13         | 13         | 13         | 13         |
| Layfield                           | 27         | 21         | 20         | 21         | 22         | 23         |
| Levendale                          | 30         | 28         | 28         | 30         | 30         | 30         |
| Preston                            | 29         | 29         | 28         | 28         | 28         | 28         |
| St Mary's CE                       | 15         | 14         | 14         | 14         | 14         | 14         |
| The Links                          | 30         | 21         | 29         | 29         | 29         | 29         |
| Yarm                               | 60         | 54         | 59         | 58         | 58         | 59         |
| <b>Eaglescliffe and Yarm Total</b> | <b>241</b> | <b>207</b> | <b>221</b> | <b>223</b> | <b>224</b> | <b>226</b> |

Note: Area totals may vary from schools totals

Map - Secondary Schools Planning Areas







## Stockton on Tees - Schools and Published Admission Numbers 2013 to 2014

## Secondary Schools

| Billingham and Wolviston                  | PAN        | 2013       | 2014       | Year<br>2015 | 2016       | 2017       |
|---|------------|------------|------------|--------------|------------|------------|
| Northfield                                | 270        | 270        | 290        | 283          | 324        | 323        |
| St Michael's RC                           | 168        | 168        | 175        | 172          | 191        | 196        |
| <b>Billingham and Wolviston<br/>Total</b> | <b>438</b> | <b>438</b> | <b>465</b> | <b>455</b>   | <b>515</b> | <b>519</b> |

| North Stockton              | PAN        | 2013       | 2014       | Year<br>2015 | 2016       | 2017       |
|-----------------------------|------------|------------|------------|--------------|------------|------------|
| Bishopsgarth                | 120        | 110        | 96         | 131          | 125        | 117        |
| North Shore Academy         | 210        | 113        | 97         | 106          | 112        | 116        |
| <b>North Stockton Total</b> | <b>330</b> | <b>223</b> | <b>193</b> | <b>237</b>   | <b>237</b> | <b>233</b> |

| Central Stockton              | PAN        | 2013       | 2014       | Year<br>2015 | 2016       | 2017       |
|-------------------------------|------------|------------|------------|--------------|------------|------------|
| Grangefield                   | 210        | 150        | 176        | 142          | 168        | 191        |
| Ian Ramsey CE                 | 237        | 237        | 208        | 226          | 267        | 272        |
| Our Lady and St Bede's<br>RC  | 150        | 150        | 136        | 142          | 151        | 155        |
| <b>Central Stockton Total</b> | <b>597</b> | <b>537</b> | <b>520</b> | <b>510</b>   | <b>586</b> | <b>618</b> |

| Thornaby              | PAN        | 2013       | 2014       | Year<br>2015 | 2016       | 2017       |
|-----------------------|------------|------------|------------|--------------|------------|------------|
| Thornaby Academy      | 150        | 59         | 82         | 82           | 92         | 102        |
| St Patrick's RC       | 111        | 91         | 108        | 105          | 110        | 119        |
| <b>Thornaby Total</b> | <b>261</b> | <b>150</b> | <b>190</b> | <b>187</b>   | <b>202</b> | <b>221</b> |

| Ingleby Barwick              | PAN        | 2013       | 2014       | Year<br>2015 | 2016       | 2017       |
|------------------------------|------------|------------|------------|--------------|------------|------------|
| All Saint's CE Academy       | 140        | 140        | 165        | 165          | 140        | 144        |
| <b>Ingleby Barwick Total</b> | <b>140</b> | <b>140</b> | <b>165</b> | <b>165</b>   | <b>140</b> | <b>144</b> |

| <b>Eaglescliffe and Yarm</b> | <b>PAN</b> | <b>Year</b> |             |             |             |             |
|------------------------------|------------|-------------|-------------|-------------|-------------|-------------|
|                              |            | <b>2013</b> | <b>2014</b> | <b>2015</b> | <b>2016</b> | <b>2017</b> |
| <b>Conyers Academy</b>       | 224        | 222         | 211         | 215         | 215         | 227         |
| <b>Eggescliffe</b>           | 235        | 235         | 290         | 271         | 279         | 282         |
| <b>Eaglescliffe and Yarm</b> |            |             |             |             |             |             |
| <b>Total</b>                 | <b>459</b> | <b>457</b>  | <b>501</b>  | <b>486</b>  | <b>494</b>  | <b>509</b>  |

**Note: Area totals may vary from schools totals**

## Stockton on Tees – Early Years Provision

Table ED5

| Billingham and Wolviston            | School | Early Years Setting | Capacity |
|-------------------------------------|--------|---------------------|----------|
| Bewley                              | *      |                     | 78       |
| Billingham South                    | *      |                     | 65       |
| High Clarence                       | *      |                     | 26       |
| Oakdene                             | *      |                     | 78       |
| Our Lady Most Holy Rosary RC        | *      |                     | 26       |
| Pentland                            | *      |                     | 78       |
| Priors Mill CE (VC)                 | *      |                     | 78       |
| Roseberry                           | *      |                     | 78       |
| St John the Evangelist RC           | *      |                     | 52       |
| St Joseph's RC                      | *      |                     | 52       |
| St Paul's RC                        | *      |                     | 52       |
| Wolviston                           | *      |                     | 26       |
| Billingham Children's Day Nursery   |        | *                   | 50       |
| Footsteps Nursey                    |        | *                   | 57       |
| Kids 1st - Wynyard                  |        | *                   | 108      |
| New Life Day Care                   |        | *                   | 106      |
| Piglet's Playgroup                  |        | *                   | 32       |
| PSLA Port Clarence                  |        | *                   | 16       |
| PSLA Wolviston Childcare            |        | *                   | 48       |
| Tummy Ticklers Childcare Centre     |        | *                   | 40       |
| Wolviston Court Community Playgroup |        | *                   | 24       |

| North Stockton           | School | Early Years Setting | Capacity |
|--------------------------|--------|---------------------|----------|
| Crooksbar                | *      |                     | 52       |
| Frederick Natrass        | *      |                     | 60       |
| Hardwick Green Academy   | *      |                     | 52       |
| Harrow Gate              | *      |                     | 78       |
| Norton                   | *      |                     | 78       |
| Rosebrook                | *      |                     | 78       |
| St Gregory's RC Academy  | *      |                     | 52       |
| St John's the Baptist CE | *      |                     | 50       |
| St Joseph's RC           | *      |                     | 52       |
| St Mark's Elm Tree       | *      |                     | 52       |

|                                  |   |   |     |
|----------------------------------|---|---|-----|
| The Glebe                        | * |   | 52  |
| Tilery                           | * |   | 52  |
| Whitehouse                       | * |   | 52  |
| William Cassidi CE               | * |   | 39  |
| Cheeky Monkees OSC - Harrow Gate |   | * | 24  |
| North Tees Day Nursery           |   | * | 120 |
| Rainbow Day Nursery & OSC        |   | * | 80  |
| Redhill Day Nursery              |   | * | 75  |
| The Norton Nursery               |   | * | 20  |
| Westview & St Mary's OSC         |   | * | 16  |

| Central Stockton | School | Early Years Setting | Capacity |
|------------------|--------|---------------------|----------|
|------------------|--------|---------------------|----------|

|   |   |   |     |
|---|---|---|-----|
| Bowesfield                                  | * |   | 30  |
| Fairfield                                   | * |   | 78  |
| Hartburn                                    | * |   | 78  |
| Holy Trinity Rosehill CE                    | * |   | 52  |
| Mill Lane                                   | * |   | 52  |
| Oxbridge Lane                               | * |   | 78  |
| St Bede's RC                                | * |   | 52  |
| St Cuthbert's RC                            | * |   | 39  |
| St Patrick's RC                             | * |   | 52  |
| The Oak Tree                                | * |   | 60  |
| Boomerang OSC                               |   | * | 42  |
| Cheeky Monkees Day Nursery - Durham Road    |   | * | 59  |
| Cheeky Monkees After School Club - Oak Tree |   | * | 56  |
| Cuddly Cubz Day Nursery                     |   | * | 47  |
| Elmwood Playgroup                           |   | * | 32  |
| Fairfield Day Care Centre                   |   | * | 48  |
| Lighthouse Day Nursery                      |   | * | 46  |
| Little Acorns Playgroup                     |   | * | 30  |
| Little Ladybirds Day Nursery                |   | * | 110 |
| Rosehill Pre-School                         |   | * | 29  |
| Sunrise Day Care Centre                     |   | * | 46  |
| The Star Day Nursery                        |   | * | 54  |
| Tiny Turners Nursery                        |   | * | 100 |

| Thornaby | School | Early Years Setting | Capacity |
|----------|--------|---------------------|----------|
|----------|--------|---------------------|----------|

|                    |   |  |    |
|--------------------|---|--|----|
| Bader              | * |  | 78 |
| Christ the King RC | * |  | 52 |



|   |   |   |    |
|---|---|---|----|
| Harewood  | * |   | 78 |
| Mandale Mill  | * |   | 52 |
| St Patrick's RC                                     | * |   | 78 |
| Thornaby CE Village                                 | * |   | 52 |
| Cheeky Monkees Day Nursery - Thornaby               |   | * | 90 |
| Early Support Nursery - high Flyers                 |   | * | 20 |
| Minus Fives Day Nursery                             |   | * | 60 |
| Oasis   |   | * | 8  |
| Riverbank Childcare                                 |   | * | 24 |
| Teddy Bears Day Nursery                             |   | * | 56 |
| Tees Active Ltd Childcare                           |   | * | 42 |
| Teesdale Children's Nursery                         |   | * | 59 |
| The Montessori People @ High Flyers                 |   | * | 80 |
| Thornaby Children's Nursery (Montessori Pre-School) |   | * | 65 |

| Ingleby Barwick                        | School | Early Years Setting | Capacity |
|--|--------|---------------------|----------|
| Barley Fields                          | *      |                     | 78       |
| Ingleby Mill                           | *      |                     | 78       |
| Myton Park                             | *      |                     | 78       |
| St Francis of Assisi CE                | *      |                     | 52       |
| St Therese of Lisieux RC               | *      |                     | 52       |
| Whinstone                              | *      |                     | 778      |
| Barley Fields Children's Club          |        | *                   | 64       |
| Busy Bees (Just Learning)              |        | *                   | 100      |
| Playhouse Day Nursery                  |        | *                   | 50       |
| Plus Fives After School & Holiday Club |        | *                   | 64       |
| Ryandale Playgroup                     |        | *                   | 48       |
| Whinstone Children's Club              |        | *                   | 30       |

| Eaglescliffe and Yarm | School | Early Years Setting | Capacity |
|-----------------------|--------|---------------------|----------|
| Durham Lane           | *      |                     | 52       |
| Egglecliffe CE        | *      |                     | 52       |
| Junction Farm         | *      |                     | 40       |
| Kirklevington         | *      |                     | 26       |
| Layfield              | *      |                     | 52       |
| Levendale             | *      |                     | 52       |
| Preston               | *      |                     | 48       |
| St Mary's CE          | *      |                     | 13       |

|   |   |   |    |
|---|---|---|----|
| <b>The Links</b>                              | * |   | 40 |
| <b>Yarm</b>                                   | * |   | 78 |
| <b>Butterfield Pre-School Playgroup</b>       |   | * | 26 |
| <b>Cheeky Monkees Day Nursery - The Links</b> |   | * | 50 |
| <b>Clever Clogs</b>                           |   | * | 48 |
| <b>Glenfield Nursery School</b>               |   | * | 70 |
| <b>Layfield Day Care Centre and OSC</b>       |   | * | 56 |
| <b>Levendale Before and After School Club</b> |   | * | 24 |
| <b>Levendale Under Fives Group</b>            |   | * | 26 |
| <b>Puddleducks Childcare</b>                  |   | * | 29 |
| <b>Puddleducks @ Yarm Primary</b>             |   | * | 26 |
| <b>Rosedene @ Eggescliffe</b>                 |   | * | 40 |
| <b>Rosedene @ Durham Lane OSC</b>             |   | * | 48 |
| <b>Woodlands Play Group</b>                   |   | * | 20 |

## Medium Term Financial Plan

**PROPOSED CAPITAL EXPENDITURE****Medium Term Financial Plan**

The table below sets out the capital expenditure for the period 2012-2018

| <b>CAPITAL PROGRAMME 2012-2018</b>                     | <b>Current Approved Programme (£)</b> | <b>New Approvals</b> | <b>TOTAL (£)</b>  |
|--|---------------------------------------|----------------------|-------------------|
| <b>SCHOOL CAPITAL</b>                                  |                                       |                      |                   |
| <b>School Investment Programme</b>                     |                                       |                      |                   |
| Misc Schools - Condition Works                         | 6,164,998                             | 0                    | 6,164,998         |
| St Marks Primary                                       | 1,267,765                             | 0                    | 1,267,765         |
| Barley Fields Primary                                  | 1,307,600                             | 0                    | 1,307,600         |
| Christ the King Primary                                | 1,146,000                             | 0                    | 1,146,000         |
| Junction Farm Primary                                  | 2,202,100                             | 0                    | 2,202,100         |
| St Francis of Assisi Primary                           | 2,485,000                             | 0                    | 2,485,000         |
| Northfield School                                      | 3,733,651                             | 0                    | 3,733,651         |
| Bewley Primary School                                  | 1,114,202                             | 0                    | 1,114,202         |
| Norton Primary   | 412,090                               | 0                    | 412,090           |
| The Glebe  | 584,032                               | 0                    | 584,032           |
| Our Lady of the Most Holy Rosary RC VA Primary         | 166,500                               | 0                    | 166,500           |
| Egglescliffe CE Primary                                | 203,765                               | 0                    | 203,765           |
| Minor Schools Works                                    | 175,525                               | 0                    | 175,525           |
| <b>TOTAL</b>   | <b>20,963,228</b>                     | <b>0</b>             | <b>20,963,228</b> |
| <b>Academies</b>                                       |                                       |                      |                   |
| Northshore Academy                                     | 15,769,484                            | 0                    | 15,769,484        |
| Thornaby Academy                                       | 5,363,176                             | 0                    | 5,363,176         |
| <b>TOTAL</b>   | <b>21,132,660</b>                     | <b>0</b>             | <b>21,132,660</b> |
|  |                                       |                      |                   |
| <b>SCHOOLS CAPITAL</b>                                 | <b>42,095,888</b>                     | <b>0</b>             | <b>42,095,888</b> |
| <b>HOUSING REGENERATION &amp; TOWN CENTRES SCHEMES</b> |                                       |                      |                   |
| <b>Housing Regeneration</b>                            |                                       |                      |                   |
| Mandale Regeneration                                   | 3,995,151                             | 0                    | 3,995,151         |
| Victoria Estate Regeneration                           | 3,385,136                             | 0                    | 3,385,136         |
| Parkfield Regeneration                                 | 2,984,018                             | 0                    | 2,984,018         |
| Swainby Road Regeneration                              | 1,602,627                             | 0                    | 1,602,627         |
| Hardwick Regeneration                                  | 147,492                               | 0                    | 147,492           |
| Northshore Development (Growth Point)                  | 56,330                                |                      | 56,330            |
| Community Energy Saving Programme                      | 697,493                               | 0                    | 697,493           |

|  |                   |                  |                   |
|--|-------------------|------------------|-------------------|
| <b>TOTAL</b>   | <b>12,868,247</b> | <b>0</b>         | <b>12,868,247</b> |
| <b>Stockton Town Centre Schemes</b>                    |                   |                  |                   |
| Stockton Town Centre Schemes                           | 18,088,297        | 4,690,000        | 22,778,297        |
| St John's Crossing                                     | 6,177,700         | 0                | 6,177,700         |
| Town Heritage Initiative                               | 2,279,856         | 0                | 2,279,856         |
| Globe Theatre Refurbishment                            | 1,150,000         | 0                | 1,150,000         |
| Stockton Heritage in Partnership (SHiP)                | 123,293           | 0                | 123,293           |
| Stockton Central Library Refurbishment                 | 7,733             |                  | 7,733             |
|  | <b>27,826,879</b> | <b>4,690,000</b> | <b>32,516,879</b> |
| <b>Billingham Town Centre Schemes</b>                  |                   |                  |                   |
| Billingham Town Centre - Public Realm                  | 1,830,000         | 0                | 1,830,000         |
| Billingham Library & Contact Facility                  | 2,776,800         | 1,500,000        | 2,776,800         |
| Billingham Forum                                       | 88,568            | 1,500,000        | 88,568            |
| Billingham House                                       | 240,516           | 230,000          | 470,516           |
| Billingham Extra Care Scheme - Car Park                | 0                 | 230,000          | 230,000           |
|  | <b>4,935,884</b>  | <b>460,000</b>   | <b>5,395,884</b>  |
|  |                   |                  |                   |
| <b>HOUSING REGENERATION &amp; TOWN CENTRES SCHEMES</b> | <b>45,631,010</b> | <b>5,150,000</b> | <b>50,781,010</b> |
| <b>TRANSPORTATION</b>                                  |                   |                  | 0                 |
| <b>Local Transport Plans</b>                           |                   |                  | 0                 |
| LTP - Integrated Transport                             | 1,132,530         | 2,913,000        | 4,045,530         |
| LTP - Structural Maintenance                           | 2,113,212         | 3,936,000        | 6,049,212         |
| Talbot Street Road Works                               | 546,827           | 0                | 546,827           |
| Blakeston Lane/Junction Road Improvements              | 0                 | 750,000          | 750,000           |
| Flood Defences   | 0                 | 100,000          | 100,000           |
| Developer Agreements                                   | 1,398,079         | 0                | 1,398,079         |
| Tees Valley Bus Network Initiative                     | 3,236,874         | 0                | 3,236,874         |
|  | <b>8,427,522</b>  | <b>7,699,000</b> | <b>16,126,522</b> |
| <b>OTHER SCHEMES</b>                                   |                   |                  | 0                 |
| <b>Private Sector Housing</b>                          |                   |                  | 0                 |
| Disabled Adaptations                                   | 2,647,357         | 0                | 2,647,357         |
| Empty Homes - Regional Scheme                          | 300,000           | 0                | 300,000           |
| Regional Loan Scheme                                   | 300,000           | 0                | 300,000           |
| Empty Properties (EDMO's)                              | 58,000            | 0                | 58,000            |
|  | <b>3,305,357</b>  | <b>0</b>         | <b>3,305,357</b>  |
| <b>Facilities Management</b>                           |                   |                  | 0                 |
| Building Maintenance Programme                         | 925,223           | 0                | 925,223           |
| Asset Review   | 0                 | 300,000          | 300,000           |
| Demolition of Wrensfield House/PRU                     | <b>0</b>          | <b>250,000</b>   | 200,000           |
|  | <b>925,223</b>    | <b>550,000</b>   | <b>1,425,223</b>  |
| <b>Resources / ICT</b>                                 |                   |                  |                   |
| A2S: ICT Cost  | 166,515           | 0                | 166,515           |
| Broadband Infrastructure                               | 140,000           | 0                | 140,000           |

|   |                    |                   |                    |
|---|--------------------|-------------------|--------------------|
| ICT Infrastructure                        | 241,249            | 0                 | 241,249            |
| Server Virtualisation                     | 210,605            | 0                 | 210,605            |
|   | <b>758,369</b>     | <b>0</b>          | <b>758,369</b>     |
| <b>Parks, Museums and Cemeteries</b>      |                    |                   |                    |
| Preston Hall - Museum Project             | 1,463,933          | 0                 | 1,463,933          |
| Parks Improvement Programme               | 735,129            | 0                 | 735,129            |
| Cemeteries                                | 195,417            | 0                 | 195,417            |
|   | <b>2,394,479</b>   | <b>0</b>          | <b>2,394,479</b>   |
| <b>Energy Management Schemes</b>          |                    |                   |                    |
| PV Panels on Muni Buildings               | 295,822            | 0                 | 295,822            |
| Street Lighting Scheme                    | 889,480            | 0                 | 889,480            |
|   | <b>1,185,302</b>   | <b>0</b>          | <b>1,185,302</b>   |
| <b>Other Schemes</b>                      |                    |                   |                    |
| Vehicle Replacement Fund                  | 1,699,892          | 0                 | 1,699,892          |
| Funding Early Education for Two Year Olds | 391,129            | 0                 | 391,129            |
| Short Breaks for Disabled Children        | 304,488            | 0                 | 304,488            |
| Community Capacity Projects               | 0                  | 918,229           | 918,229            |
| Wireless Camera Network                   | 121,500            | 0                 | 121,500            |
| HV&E Handheld Technology                  | 33,857             | 0                 | 33,857             |
| Property Adaptations                      | 52,830             | 0                 | 52,830             |
|   | <b>2,603,696</b>   | <b>918,229</b>    | <b>3,521,925</b>   |
|   |                    |                   |                    |
| <b>OTHER SCHEMES</b>                      | <b>11,372,426</b>  | <b>1,468,229</b>  | <b>12,840,655</b>  |
| <b>Total Approved Capital MTFP</b>        | <b>107,526,847</b> | <b>14,317,229</b> | <b>121,844,076</b> |

0

| <b>CAPITAL PROGRAMME 2012-2018</b>         | <b>Current Approved Programme</b> | <b>New Approvals (Part of Report)</b> | <b>TOTAL</b>         |
|--|-----------------------------------|---------------------------------------|----------------------|
| Government Support                         | (53,919,871)                      | (7,917,229)                           | (61,837,100)         |
| Earmarked Resources / Receipts             | (7,156,405)                       | 0                                     | (7,156,405)          |
| Earmarked Housing Regeneration Receipts    | (11,973,450)                      | 0                                     | (11,973,450)         |
| Prudential Borrowing                       | (1,182,087)                       | 0                                     | (1,182,087)          |
| Other Contributions                        | (1,895,130)                       | (200,000)                             | (2,095,130)          |
| Corporate One-Off Resources                | (31,399,904)                      | (6,200,000)                           | (37,599,904)         |
| <b>Total Approved Funding Capital MTFP</b> | <b>(107,526,847)</b>              | <b>(14,317,229)</b>                   | <b>(121,844,076)</b> |

## Three - Mobile Telecommunications Network Update 2014 - 2015



## Three - Annual Network Update Plans Spreadsheet 2014 - 2015



| Authority             | Operator     | Operator Reference | Easting | Northing | Site Name                                | Site Address  | Post Code | Status     |
|-----------------------|--------------|--------------------|---------|----------|--|---|-----------|------------|
| Stockton on Tees (UC) | Three and EE | 97003              | 428995  | 514891   | NORTHGATE HOUSE                          | NORTHGATE HOUSE ST AUGUSTINES WAY NORTHGATE DARLINGTON COUNTY DURHAM  | DL1 1XA   | Site Built |
| Stockton on Tees (UC) | Three and EE | 97022              | 437075  | 515205   | MILL HILL FARM NTL - GFC                 | Mill Lane Middleton Street George DARLINGTON COUNTY DURHAM  | DL2 1TG   | Site Built |
| Stockton on Tees (UC) | Three and EE | 27196              | 442525  | 511850   | YARM SPORTS & SOCIAL CLUB 211367         | YARM SPORTS & SOCIAL CLUB LEVEN ROAD ROSEHILL YARM NORTH YORKSHIRE  | TS15 9FG  | Site Built |
| Stockton on Tees (UC) | Three and EE | 64141              | 444870  | 510260   | O2 LAND OFF WEARY BANK                   | LAND OFF WEARY BANK RED HALL FARM CASTLE LEVINGTON YARM-ON-TEES NORTH YORKSHIRE                             | TS15 9PD  | Site Built |
| Stockton on Tees (UC) | Three and EE | 27183              | 441159  | 513838   | NGC PYLON - 4VC026 - EAGLESCLIFFE 17699  | PYLON 4VC 026 EAGLESCLIFFE STOCKTON STOCKTON ON TEES COUNTY DURHAM  | TS16 0QA  | Site Built |
| Stockton on Tees (UC) | Three and EE | 97002              | 441330  | 512448   | PYLON 4VC030 YARM                        | Field Off Holmewood River Lodge (Holme House Farm),Aislaby Road Eaglescliffe STOCKTON-ON-TEES COUNTY DURHAM | TS16 0QN  | Site Built |
| Stockton on Tees (UC) | Three and EE | 95942              | 441905  | 515019   | PMC LIMITED                              | 5 Wass Way Durham Lane Industrial Park Eaglescliffe STOCKTON-ON-TEES COUNTY DURHAM                          | TS16 0RG  | Site Built |
| Stockton on Tees (UC) | Three and EE | 27181              | 444450  | 513925   | BARWICK WAY SW 205883                    | BARWICK WAY STREETWORKS BARWICK WAY INGLEBY BARWICK STOCKTON ON TEES NORTH YORKSHIRE                        | TS17 0TU  | Site Built |
| Stockton on Tees (UC) | Three and EE | 27173              | 445585  | 518447   | ADDISON PLANT LIMITED 202575             | ADDISON PLANT LIMITED WILSON STREET THORNABY STOCKTON ON TEES NORTH YORKSHIRE                               | TS17 7AR  | Site Built |
| Stockton on Tees (UC) | Three and EE | 96999              | 445886  | 516426   | HUDSON HOUSE                             | HUDSON HOUSE WESTDALE RD THORNBY ON TEES STOCKTON-ON-TEES NORTH YORKSHIRE                                   | TS17 9BU  | Site Built |
| Stockton on Tees (UC) | Three and EE | 95946              | 446496  | 514780   | TEESIDE IND. ESTATE                      | TEESIDE INDUSTRIAL ESTATE THORNABY - ON TEES . CLEVELAND NORTH YORKSHIRE                                    | TS17 9JZ  | Site Built |
| Stockton on Tees (UC) | Three and EE | 27179              | 445725  | 513889   | THORNABY ROAD SW 208846                  | THORNABY ROAD SW THORNABY ROAD INGLBYBARWICK STOCKTON ON TEES NORTH YORKSHIRE                               | TS17 9LT  | Site Built |
| Stockton on Tees (UC) | Three and EE | 27169              | 444180  | 518958   | STOCKTON ATE - CCI/BT 1465               | STOCKTON ATE - CCI/BT DOVECOT STREET STOCKTON STOCKTON ON TEES COUNTY DURHAM                                | TS18 1HA  | Site Built |
| Stockton on Tees (UC) | Three and EE | 96995              | 444261  | 519542   | NOLAN HOUSE                              | Bishopston Lane Queens Park STOCKTON-ON-TEES COUNTY DURHAM  | TS18 2AX  | Site Built |
| Stockton on Tees (UC) | Three and EE | 27165              | 446520  | 519821   | G SWEENEY LTD 190977                     | G SWEENEY LTD PORTRACK GRANGE ROAD PORTRACK LANE INDUSTRIAL ESTATE STOCKTON ON TEES COUNTY DURHAM           | TS18 2PF  | Site Built |
| Stockton on Tees (UC) | Three and EE | 95933              | 444190  | 517750   | OPC BOWESFIELD IND EST                   | NORTHERN ELECTRIC SUB STATION BOWESFIELD IND EST STOCKTON ON TEES STOCKTON ON TEES COUNTY DURHAM            | TS18 3LS  | Site Built |
| Stockton on Tees (UC) | Three and EE | 27177              | 443390  | 516887   | STOCKTON ON TEES ROBERTS HOUSE XCAST NTL | NYL STOCKTON ROBERTS HOUSE NTL DE HAVILLAND AVENUE PRESTON FARM BUSINESS PARK STOCKTON ON TEES COUNTS18 3TH | TS18 3TH  | Site Built |
| Stockton on Tees (UC) | Three and EE | 27152              | 442564  | 518750   | OXBRIDGE LANE STREET WORKS 205881        | OXBRIDGE LANE STREET WORKS OXBRIDGE LANE NEAR PHOENIX GARDENS STOCKTON ON TEES COUNTY DURHAM                | TS18 4JS  | Site Built |
| Stockton on Tees (UC) | Three and EE | 27155              | 442163  | 521732   | STOCKTON MF CCI 8787                     | STOCKTON MF CCI HARROGATE LANE CORNER OFF DURHAM ROAD STOCKTON ON TEES COUNTY DURHAM                        | TS19 0QA  | Site Built |
| Stockton on Tees (UC) | Three and EE | 27162              | 441802  | 520323   | DARLINGTON BLACK LANE STREETWORKS 206708 | DARLINGTON BLACK LANE STREETWORKS DARLINGTON BLACK LANE STOCKTON ON TEES COUNTY DURHAM                      | TS19 0UU  | Site Built |
| Stockton on Tees (UC) | Three and EE | 97000              | 440932  | 521050   | BISHOPGARTH SCHOOL (FIELD) NTL - GFC     | Bishopgarth School Harrowgate Lane STOCKTON-ON-TEES COUNTY DURHAM   | TS19 8TF  | Site Built |
| Stockton on Tees (UC) | Three and EE | 27834              | 443756  | 520261   | Land off Maple Road                      | MAPLE ROAD,STOCKTON ON TEES,STOCKTON ON TEES,Stockton-on-Tees,  | TS190JS   | Site Built |
| Stockton on Tees (UC) | Three and EE | 27156              | 444168  | 521942   | GILPIN HOUSE 187855                      | GILPIN HOUSE 46 GILPIN HOUSE, CRAMMOND COURT DARLINGTON LANE MIDDLESBROUGH COUNTY DURHAM                    | TS20 1HT  | Site Built |
| Stockton on Tees (UC) | Three and EE | 27157              | 444800  | 521513   | NORTON ATE - CCI/BT 1461                 | NORTON ATE PINE STREET NORTON STOCKTON ON TEES COUNTY DURHAM  | TS20 2SP  | Site Built |
| Stockton on Tees (UC) | Three and EE | 27170              | 440831  | 517821   | NGC PYLON - 4VC014 - YARM BACK LANE      | PYLON 4VC014 - STOCKTON/A66 YARM BACK LANE JUNCTION YARM BACK LANE/A66 STOCKTON ON TEES COUNTY DURHAM       | TS21 1AR  | Site Built |
| Stockton on Tees (UC) | Three and EE | 27153              | 446377  | 522465   | BILLINGHAM SYNTHONIA CRICKET CLUB 205305 | BILLINGHAM SYNTHONIA CRICKET CLUB BELASIS AVENUE BILLINGHAM BILLINGHAM COUNTY DURHAM                        | TS23 1LH  | Site Built |
| Stockton on Tees (UC) | Three and EE | 97001              | 446130  | 523660   | KENNEDY GARDENS                          | Kingsway Billingham Cleveland BILLINGHAM COUNTY DURHAM  | TS23 1PX  | Site Built |
| Stockton on Tees (UC) | Three and EE | 95929              | 447560  | 521420   | BILLINGHAM REACH                         | ABLEUK LTD,BILLINGHAM REACH IND EST HAVERTON HILL ROAD BILLINGHAM COUNTY DURHAM                             | TS23 1PX  | Site Built |
| Stockton on Tees (UC) | Three and EE | 74194              | 448113  | 524392   | GRASS VERGE MACKLIN AVENUE               | GRASS VERGE MACKLIN AVENUE OFF COWPEN BEWLEY ROAD COWPEN BEWLEY BILLINGHAM COUNTY DURHAM                    | TS23 4JF  | Site Built |

## Operator Definitions:

Three - a site operated by Three only

Three &amp; EE- a consolidated site operated jointly by Three and EE Limited

Please note that consolidated sites are shown on both Three and EE's 2014 - 2015 Annual Network Update Plans. EE Limited (T-Mobile & ex Orange) and Three, through their joint venture company, Mobile Broadband Network Ltd (MBNL) has consolidated their 3G networks. This has resulted in the joint use of existing base station site infrastructure & hardware which results in one set of equipment on site and is enabling the reduction of duplicate sites.

EE and Three - Mobile Telecommunications Network Update 2014 - 2015

| Authority             | Operator     | Operator Reference | Easting | Northing | Site Name                                | Site Address   | Post Code | Status     |
|-----------------------|--------------|--------------------|---------|----------|--|--|-----------|------------|
| Stockton on Tees (UC) | EE and Three | 97003              | 428995  | 514891   | NORTHGATE HOUSE                          | NORTHGATE HOUSE ST AUGUSTINES WAY NORTHGATE DARLINGTON COUNTY DURHAM   | DL1 1XA   | Site Built |
| Stockton on Tees (UC) | EE           | 11727              | 436150  | 516701   | LONGNEWTON RESERVOIR                     | LONGNEWTON RESERVOIR, SADBERGE, STOCKTON ON TEES, .  | DL2 1TB   | Site Built |
| Stockton on Tees (UC) | EE and Three | 97022              | 437075  | 515205   | MILL HILL FARM NTL - GFC                 | MILL Lane Middleton Street George DARLINGTON COUNTY DURHAM   | DL2 1TG   | Site Built |
| Stockton on Tees (UC) | EE and Three | 27196              | 442525  | 511850   | YARM SPORTS & SOCIAL CLUB 211 367        | YARM SPORTS & SOCIAL CLUB LEVEN ROAD ROSEHILL YARM NORTH YORKSHIRE   | TS159FG   | Site Built |
| Stockton on Tees (UC) | EE           | 11742              | 441530  | 510831   | PYLON 4VC035                             | FAR END FARM WORSALL ROAD, YARM, CLEVELAND,  | TS159FA   | Site Built |
| Stockton on Tees (UC) | EE and Three | 64141              | 444870  | 510290   | O2 LAND OFF WEARY BANK                   | LAND OFF WEARY BANK RED HALL FARM CASTLE LEVINGTON YARM ON TEES NORTH YORKSHIRE                                | TS159FD   | Site Built |
| Stockton on Tees (UC) | EE           | 11726              | 444340  | 510581   | FARM LAND NEARBY RED HALL FARM           | FARM LAND NEARBY RED HALL FARM CASTLE LEVINGTON, YARM ON TEES, CLEVELAND,                                      | TS159FD   | Site Built |
| Stockton on Tees (UC) | EE           | 11764              | 443588  | 511975   | LP YARM EAST (GLAISDALE)                 | VERGE AREA ON A1044, BY ENTRANCE TO GLAISDALE RD (W), YARM, MIDDLESBROUGH,                                     | TS159XN   | Site Built |
| Stockton on Tees (UC) | EE           | 11736              | 441190  | 513831   | PYLON 4VC026                             | PYLON 4VC026, OFF THE A67, EGGLESCLIFFE, STOCKTON ON TEES,   | TS160LY   | Site Built |
| Stockton on Tees (UC) | EE and Three | 27183              | 441159  | 513838   | NGC PYLON - 4VC026 - EAGLESCLIFFE 17699  | PYLON 4VC 026 EAGLESCLIFFE STOCKTON ON TEES COUNTY DURHAM  | TS160QA   | Site Built |
| Stockton on Tees (UC) | EE and Three | 97002              | 441330  | 512448   | PYLON 4VC030 YARM                        | Field Off Holmewood River Lodge (Holme House Farm) Alsaby Road Eaglescliffe STOCKTON-ON-TEES COUNTY DURHAM     | TS160QN   | Site Built |
| Stockton on Tees (UC) | EE and Three | 96942              | 441905  | 515019   | PNC LIMITED                              | 5 Wass Way Durham Lane Industrial Park Eaglescliffe STOCKTON-ON-TEES COUNTY DURHAM                             | TS160RG   | Site Built |
| Stockton on Tees (UC) | EE           | 11744              | 444300  | 514001   | INGLEBY WAY                              | HIGHWAYS GRASS VERGE, INGLEBY WAY, INGLEBY BARWICK, STOCKTON-ON-TEES,  | TS170RH   | Site Built |
| Stockton on Tees (UC) | EE and Three | 27181              | 444450  | 513925   | BARWICK WAY SW 205883                    | BARWICK WAY STREETWORKS BARWICK WAY INGLEBY BARWICK STOCKTON ON TEES NORTH YORKSHIRE                           | TS170TU   | Site Built |
| Stockton on Tees (UC) | EE and Three | 27173              | 445585  | 518447   | ADDITION PLANT LIMITED 202575            | ADDITION PLANT LIMITED WILSON STREET THORNABY STOCKTON ON TEES NORTH YORKSHIRE                                 | TS177AR   | Site Built |
| Stockton on Tees (UC) | EE           | 11709              | 445874  | 516413   | INGLEBY BARWICK - ANSON HOUSE            | ANSON HOUSE, WESTDALE ROAD, THORNABY, STOCKTON ON TEES,  | TS179BU   | Site Built |
| Stockton on Tees (UC) | EE and Three | 96999              | 445888  | 516426   | HUDSON HOUSE                             | HUDSON HOUSE WESTDALE RD THORNABY ON TEES STOCKTON-ON-TEES NORTH YORKSHIRE                                     | TS179BU   | Site Built |
| Stockton on Tees (UC) | EE and Three | 96946              | 446496  | 514780   | TEESIDE IND. ESTATE                      | TEESIDE INDUSTRIAL ESTATE THORNABY - ON TEES, CLEVELAND NORTH YORKSHIRE  | TS179JZ   | Site Built |
| Stockton on Tees (UC) | EE and Three | 27179              | 445725  | 513889   | THORNABY ROAD SW 208846                  | THORNABY ROAD SW THORNABY ROAD INGLEBY BARWICK STOCKTON ON TEES NORTH YORKSHIRE                                | TS179LT   | Site Built |
| Stockton on Tees (UC) | EE           | 11759              | 445900  | 513991   | ALLISON WAY                              | ALLISON AVENUE, ADJUNING FIVE NURSERY, (91 WILLIAM CROSSH-WATE AVE), TEESIDE INDUSTRIAL ESTATE, MIDDLESBROUGH, | TS179LN   | Site Built |
| Stockton on Tees (UC) | EE           | 11746              | 445644  | 514745   | DUKESWAY                                 | HIGHWAYS GRASS VERGE, CORNER OF DUKESWAY & FERRY AVE, TEESIDE INDUSTRIAL ESTATE, MIDDLESBROUGH,                | TS179LN   | Site Built |
| Stockton on Tees (UC) | EE and Three | 27169              | 444190  | 518958   | STOCKTON ATE - CCI/BT 1465               | STOCKTON ATE - CCI/BT DOVECOT STREET STOCKTON STOCKTON ON TEES COUNTY DURHAM                                   | TS18 1HA  | Site Built |
| Stockton on Tees (UC) | EE and Three | 96995              | 444261  | 519542   | NOLAN HOUSE                              | Big hops bn Lane Queens Park STOCKTON-ON-TEES COUNTY DURHAM  | TS18 2AX  | Site Built |
| Stockton on Tees (UC) | EE           | 11697              | 444280  | 519571   | STOCKTON ON TEES - NOLAN HOUSE           | NOLAN HOUSE, OFF ALMER STREET, STOCKTON ON TEES, CLEVELAND,  | TS18 2BH  | Site Built |
| Stockton on Tees (UC) | EE and Three | 27165              | 446520  | 519821   | G SWENEY LTD 190977                      | G SWENEY LTD PORTRACK GRANGE ROAD PORTRACK LANE INDUSTRIAL ESTATE STOCKTON ON TEES COUNTY DURHAM               | TS18 2PF  | Site Built |
| Stockton on Tees (UC) | EE           | 11733              | 447110  | 520011   | BUDGET WINDOWS                           | BUDGET WINDOWS, NEVILLE RD, NORTH TEES INDUSTRIAL ESTATE, PORTRACK, STOCKTON ON TEES,                          | TS18 2RD  | Site Built |
| Stockton on Tees (UC) | EE and Three | 96993              | 444190  | 517750   | OPC BOWESFIELD IND EST                   | NORTH TERN ELECTRIC SUB STATION BOWESFIELD IND EST STOCKTON ON TEES STOCKTON ON TEES COUNTY DURHAM             | TS18 3LS  | Site Built |
| Stockton on Tees (UC) | EE           | 11699              | 444189  | 517752   | STOCKTON SOUTH CENTRAL                   | BOWESFIELD LANE SUB STATION, BOWESFIELD LANE, STOCKTON ON TEES, CLEVELAND,                                     | TS18 3LS  | Site Built |
| Stockton on Tees (UC) | EE and Three | 27177              | 443390  | 516887   | STOCKTON ON TEES ROBERTS HOUSE XCOST NTL | NYL STOCKTON ROBERTS HOUSE NTL DE HAVILLAND AVENUE PRESTON FARM BUSINESS PARK STOCKTON ON TEES COUNTY DURHAM   | TS18 3TH  | Site Built |
| Stockton on Tees (UC) | EE and Three | 27162              | 442564  | 518750   | OXBIDGE LANE STREETWORKS 205881          | OXBIDGE LANE STREETWORKS OXBIDGE LANE NEAR PHOENIX GARDENS STOCKTON ON TEES COUNTY DURHAM                      | TS18 4JS  | Site Built |
| Stockton on Tees (UC) | EE and Three | 27155              | 442163  | 521732   | STOCKTON MF CCI 8787                     | STOCKTON MF CCI HARROGATE LANE CORNER OFF DURHAM ROAD STOCKTON ON TEES COUNTY DURHAM                           | TS190QA   | Site Built |
| Stockton on Tees (UC) | EE and Three | 27162              | 441802  | 520323   | DARLINGTON BLACK LANE STREETWORKS 206708 | DARLINGTON BLACK LANE STREETWORKS DARLINGTON BLACK LANE STOCKTON ON TEES COUNTY DURHAM                         | TS190JU   | Site Built |
| Stockton on Tees (UC) | EE           | 11715              | 442301  | 521087   | STOCKTON NORTH                           | NOR TH TEES GENERAL HOSPITAL, HARDWICK, STOCKTON ON TEES, CLEVELAND,   | TS198PE   | Site Built |
| Stockton on Tees (UC) | EE and Three | 97000              | 440932  | 521050   | BISHOP GARTH SCHOOL (FIELD) NTL - GFC    | Bishopgarth School Harrowgate Lane, STOCKTON-ON-TEES COUNTY DURHAM   | TS198TF   | Site Built |
| Stockton on Tees (UC) | EE and Three | 27834              | 443756  | 520251   | Land off Maple Road                      | MAPLE ROAD, STOCKTON ON TEES, STOCKTON ON TEES,  | TS190JS   | Site Built |
| Stockton on Tees (UC) | EE and Three | 27166              | 444168  | 521942   | GILPIN HOUSE 187955                      | GILPIN HOUSE 48 GILPIN HOUSE, CRAMMOND COURT DARLINGTON LANE MIDDLESBROUGH COUNTY DURHAM                       | TS20 1HT  | Site Built |
| Stockton on Tees (UC) | EE           | 11728              | 44210   | 521963   | ANSTY HOUSE A                            | ANSTY HOUSE, CLAYMOND COURT, DARLINGTON LN, NORTON, STOCKTON ON TEES, CLEVELAND,                               | TS20 1HT  | Site Built |
| Stockton on Tees (UC) | EE           | 74100              | 444909  | 521843   | GRASS VERGE BILLINGHAM RD R/B            | GRASS VERGE BILLINGHAM RD R/B Billingham Road, Norton STOCKTON-ON-TEES COUNTY DURHAM                           | TS20 2SG  | Site Built |
| Stockton on Tees (UC) | EE and Three | 27157              | 444800  | 521513   | NORTON ATE - CCI/BT 1461                 | NORTON ATE PINE STREET NORTON STOCKTON ON TEES COUNTY DURHAM   | TS20 2SP  | Site Built |
| Stockton on Tees (UC) | EE and Three | 27170              | 440831  | 517821   | NGC PYLON - 4VC014 - YARM BACK LANE      | PYLON 4VC014 - STOCKTON/A66 YARM BACK LANE JUNCTION YARM BACK LANE/A66 STOCKTON ON TEES COUNTY DURHAM          | TS21 1AT  | Site Built |
| Stockton on Tees (UC) | EE           | 11714              | 440808  | 518338   | MEAD OW LEAS FARM                        | YARM BACK LANE, ELTON, STOCKTON ON TEES, .   | TS21 1AR  | Site Built |
| Stockton on Tees (UC) | EE           | 11701              | 440827  | 517824   | PYLON 4VC014                             | PYLON (REF: 4VC014), OFF YARM BACK LANE, STOCKTON ON TEES, .   | TS21 1AT  | Site Built |
| Stockton on Tees (UC) | EE           | 11749              | 438450  | 521726   | WOODSIDE FARM                            | WOODSIDE FARM WHITTON ROAD, REDMARSHALL, STOCKTON ON TEES,   | TS21 1EN  | Site Built |
| Stockton on Tees (UC) | EE           | 11722              | 438671  | 524601   | LEAZES FARM                              | THORPE LEAZES FARM, THORPE THEWLES, STOCKTON ON TEES, CLEVELAND,   | TS21 3HZ  | Site Built |
| Stockton on Tees (UC) | EE           | 11762              | 444103  | 528386   | SAMSUNG AVENUE                           | EAST FOOTWAY, SAMSUNG AVENUE, SAMSUNG INDUSTRIAL PARK, STOCKTON ON TEES,                                       | TS22 5ND  | Site Built |
| Stockton on Tees (UC) | EE and Three | 27153              | 446377  | 522466   | BILLINGHAM SYNTHONIA CRICKET CLUB 205305 | BILLINGHAM SYNTHONIA CRICKET CLUB BELASIS AVENUE BILLINGHAM BILLINGHAM COUNTY DURHAM                           | TS23 1LH  | Site Built |
| Stockton on Tees (UC) | EE and Three | 97001              | 446130  | 523660   | KENNEDY GARDENS                          | Kingsway Billingham Cleveland BILLINGHAM COUNTY DURHAM   | TS23 1FX  | Site Built |
| Stockton on Tees (UC) | EE and Three | 96929              | 447960  | 521420   | BILLINGHAM REACH                         | ABLEUK LTD BILLINGHAM REACH IND EST HAVERTON HILL ROAD BILLINGHAM COUNTY DURHAM                                | TS23 1FX  | Site Built |
| Stockton on Tees (UC) | EE           | 11706              | 445600  | 523201   | BILLINGHAM - DAWSON HOUSE                | DAWSON HOUSE, QUEENSWAY, BILLINGHAM CLEVELAND,   | TS23 2PA  | Site Built |
| Stockton on Tees (UC) | EE           | 11704              | 447080  | 525301   | HUM - MELSONBY COURT                     | MELSONBY COURT, LOW GRANISE AVENUE BILLINGHAM, .   | TS23 3LL  | Site Built |
| Stockton on Tees (UC) | EE and Three | 74194              | 448113  | 524382   | GRASS VERGE MACKLIN AVENUE               | GRASS VERGE MACKLIN AVENUE OFF COWPEN BEWLEY ROAD COWPEN BEWLEY BILLINGHAM COUNTY DURHAM                       | TS23 4JF  | Site Built |

Operator Definitions:  
 EE - a site operated by EE Limited  
 EE & Three - a consolidated site operated jointly by EE Limited and Three

Please note that consolidated sites are shown on both Three and EE's 2014 - 2015 Annual Network Update Plans. EE Limited (T-Mobile & ex Orange) and Three, through their joint venture company, Mobile Broadband Network Ltd (MBNL) has consolidated their 3G networks. This has resulted in the joint use of existing base station site infrastructure & hardware which results in one set of equipment on site and is enabling the reduction of duplicate sites.



Vodafone and O<sub>2</sub> - Mobile Telecommunications Network Update 2014 –2015

| CTIL Site Ref. | District_UA      | Country | Easting | Northing | Site Name                      | Site Address  | Postcode | Status     |
|----------------|------------------|---------|---------|----------|--------------------------------|---|----------|------------|
| 106909         | Stockton-on-Tees | England | 444183  | 518939   | Cornerstone 14305 _ Voda 79806 | Stockton Market TE  | TS18 1HA | Site Built |
| 107396         | Stockton-on-Tees | England | 447025  | 525259   | Prior Court                    | Priory Court flats  | TS23 3PL | Site Built |
| 107836         | Stockton-on-Tees | England | 444428  | 519695   | STOCKTON ON TEES               | NOLAN HOUSE C/O HUME HOUSE                                      | TS18 2BJ | Site Built |
| 107996         | Stockton-on-Tees | England | 446304  | 522546   | Billingham Synthonia Cricket   | Bellasis Avenue   | TS23 1LH | Site Built |
| 108178         | Stockton-on-Tees | England | 441830  | 522650   | Howden Hall                    | Durham Road   | TS21 3JN | Site Built |
| 108433         | Stockton-on-Tees | England | 444900  | 510300   | Red Hall Farm                  | Land Near A19 (T)   | TS15 9PD | Site Built |
| 108514         | Stockton-on-Tees | England | 446582  | 523622   | BILLINGHAM, MIDDLESBROUGH      | BILLINGHAM RAILWAY STATION                                      | TS23 4AU | Site Built |
| 108515         | Stockton-on-Tees | England | 445900  | 516260   | THORNABY-ON-TEES,MIDDLESBROUGH | THE GOLDEN EAGLE HOTEL  | TS17 ODA | Site Built |
| 108936         | Stockton-on-Tees | England | 443881  | 524420   | WOLVISTON                      | WHITE HOUSE FARM  | TS22 5NB | Site Built |
| 109002         | Stockton-on-Tees | England | 439510  | 523876   | THORPE THEWLES                 | LAND AT HELL HOLE LANE<br>TEES AND HARTLEPOOL PORT<br>AUTHORITY | TS21 3LH | Site Built |
| 109022         | Stockton-on-Tees | England | 453548  | 524111   | TEESPORT                       |   | TS2 1TS  | Site Built |
| 109191         | Stockton-on-Tees | England | 441596  | 513860   | EGGLESCLIFFE                   | STRIKES GARDEN CENTRE (TESCO SITE)                              | TS16 0PE | Site Built |
| 109441         | Stockton-on-Tees | England | 441868  | 514893   | Transhaul                      | Eaglescliffe Ind Estate   | TS16 0RG | Site Built |
| 111310         | Stockton-on-Tees | England | 450600  | 523390   | Seal Sands TE                  | Seaton Carew Rd   | TS2 1TP  | Site Built |
| 111544         | Stockton-on-Tees | England | 444160  | 521950   | Cornerstone 14293 _ Voda 79802 | Claymond Court  | TS20 1HS | Site Built |
| 112208         | Stockton-on-Tees | England | 446840  | 518090   | Streetworks adjacent to Morris | Streetworks adjacent to Morrison's                              | TS17 7BU | Site Built |
| 112209         | Stockton-on-Tees | England | 445980  | 514150   | SF Ingleby Way West            | Street Furniture on Adopted Highway                             | TS17 OTR | Site Built |
| 112210         | Stockton-on-Tees | England | 438950  | 516940   | Forestry Commission Longnewton | A66   | TS21 1BU | Site Built |
| 112532         | Stockton-on-Tees | England | 443040  | 516940   | HARTBURN                       | CARTER STEEL LTD  | TS18 3TN | Site Built |
| 112546         | Stockton-on-Tees | England | 442850  | 517000   | Land next to Redhouse Farm     | Yarm Road   | TS18 3RN | Site Built |
| 112640         | Stockton-on-Tees | England | 442285  | 521170   | Cornerstone 14296 _ Voda 79803 | Maternity & Psychiatric Building                                | TS19 8PE | Site Built |
| 112655         | Stockton-on-Tees | England | 441881  | 512626   | Boyes Dept Store               | 45-47 High Street   | TS15 9BH | Site Built |
| 112684         | Stockton-on-Tees | England | 445750  | 523940   | Land adj. to Golf Club off Wol | SW site adj. to Golf Club                                       | TS22 5ER | Site Built |
| 112708         | Stockton-on-Tees | England | 444390  | 520330   | Transco                        | CLARENCE STREET   | TS18 2RY | Site Built |
| 112770         | Stockton-on-Tees | England | 445530  | 516150   | Transco 900309                 | MILLBANK LANE   | TS17 0AY | Site Built |
| 113648         | Stockton-on-Tees | England | 444350  | 519057   | NI Mobile Phone Store (Stockto | Wellington Centre   | TS18 1RG | Site Built |
| 114199         | Stockton-on-Tees | England | 446603  | 520533   | Cornerstone 14301 _ Voda 79805 | Tankclean PDR LTD   | TS18 2QF | Site Built |
| 114201         | Stockton-on-Tees | England | 442350  | 518444   | Cornerstone 14310 _ Voda 79807 | SW's on Green's Lane  | TS18 5AN | Site Built |
| 114543         | Stockton-on-Tees | England | 445989  | 522862   | Old Theatre Building           | Old Theatre House   | TS23 1LH | Site Built |
| 114643         | Stockton-on-Tees | England | 440930  | 521075   | BISHOPSGARTH, STOCKTON ON TEES | BISHOPSGARTH, STOCKTON ON TEES                                  | TS19 8UT | Site Built |
| 114658         | Stockton-on-Tees | England | 438210  | 516865   | A66 LONGNEWTON                 | FARFIELDS FARM  | TS21 1DH | Site Built |
| 114799         | Stockton-on-Tees | England | 447383  | 523710   | BELASIS HALL TECHNOLOGY PARK   | THE DEPOT   | TS23 4DA | Site Built |
| 114825         | Stockton-on-Tees | England | 443335  | 516916   | Cornerstone 14311 _ Voda 79808 | Roberts House NTL   | TS18 3TH | Site Built |
| 114928         | Stockton-on-Tees | England | 442468  | 511709   | Land Adjacent to Yarm Station  | Land Adjacent to Yarm Station                                   | TS15 9UJ | Site Built |
| 117374         | Stockton-on-Tees | England | 445394  | 518312   | THORNABY 3G                    | YARD OF TEKNIC  | TS177AH  | Site Built |
| 117375         | Stockton-on-Tees | England | 444850  | 514190   | INGLEBY BARWICK 3G             | BARWICK WAY   | TS170NA  | Site Built |
| 118233         | Stockton-on-Tees | England | 441440  | 519183   | ELTON PARK                     | FAIRFIELD   | TS197HE  | Site Built |
| CTIL Ref       |                  |         |         |          |                                |   |          |            |
| TBC            | Stockton-on-Tees | England | 444314  | 526588   | Cleveland Police Wellington Ho | Wellington House  | TS22 5TB | Site Built |
| CTIL Ref       |                  |         |         |          |                                |   |          |            |
| TBC            | Stockton-on-Tees | England | 444414  | 526688   | Cleveland Police Billingham    | Cleveland Police  | TS22 5TB | Site Built |
| CTIL Ref       |                  |         |         |          |                                |   |          |            |
| TBC            | Stockton-on-Tees | England | 446200  | 520400   | DHL Stockton on Tees - Node G  | Portrack Interchange Business Park                              | TS18 2SA | Site Built |

Telefónica UK Limited has entered into an agreement with Vodafone Limited pursuant to which the two companies plan to jointly operate and manage a single network grid across the UK. These arrangements are overseen by Cornerstone Telecommunications Infrastructure Ltd (CTIL) which is a joint venture company owned by Telefónica UK Limited and Vodafone Limited.