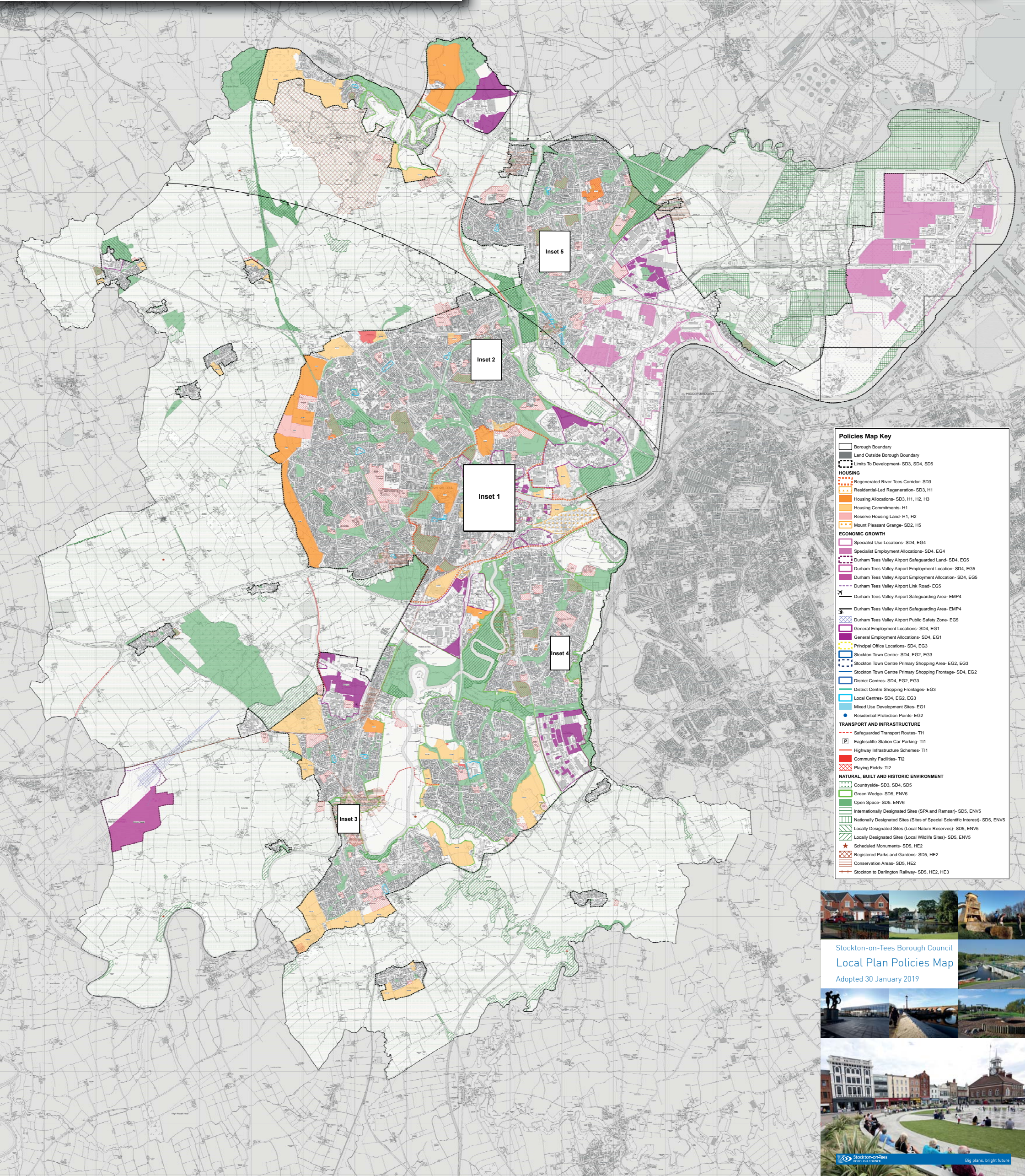


Local Plan Policies Map

Adopted 30 January 2019



© Crown Copyright
and database right 2018
Ordnance Survey 100023297



Policies Map Key	
	Borough Boundary
	Land Outside Borough Boundary
	Limits to Development- SD3, SD4, SD5
HOUSING	
	Regenerated River Tees Corridor- SD3
	Residential-Led Regeneration- SD3, H1
	Housing Allocations- SD3, H1, H2, H3
	Housing Commitments- H1
	Reserve Housing Land- H1, H2
	Mount Pleasant Grange- SD2, H5
ECONOMIC GROWTH	
	Specialist Use Locations- SD4, EG4
	Specialist Employment Allocations- SD4, EG4
	Durham Tees Valley Airport Safeguarded Land- SD4, EG5
	Durham Tees Valley Airport Employment Location- SD4, EG5
	Durham Tees Valley Airport Employment Allocation- SD4, EG5
	Durham Tees Valley Airport Link Road- EG5
	Durham Tees Valley Airport Safeguarding Area- EMP4
	Durham Tees Valley Airport Safeguarding Area- EMP4
	Durham Tees Valley Airport Public Safety Zone- EG5
	General Employment Locations- SD4, EG1
	General Employment Allocations- SD4, EG1
	Principal Office Locations- SD4, EG3
	Stockton Town Centre- SD4, EG2, EG3
	Stockton Town Centre Primary Shopping Area- EG2, EG3
	Stockton Town Centre Primary Shopping Frontage- SD4, EG2
	District Centres- SD4, EG2, EG3
	District Centre Shopping Frontages- EG3
	Local Centres- SD4, EG2, EG3
	Mixed Use Development Sites- EG1
	Residential Protection Points- EG2
TRANSPORT AND INFRASTRUCTURE	
	Safeguarded Transport Routes- T11
	Eaglescliffe Station Car Parking- T11
	Highway Infrastructure Schemes- T11
	Community Facilities- T12
	Playing Fields- T12
NATURAL, BUILT AND HISTORIC ENVIRONMENT	
	Countryside- SD3, SD4, SD5
	Green Wedge- SD5, ENV6
	Open Space- SD5, ENV6
	Internationally Designated Sites (SPA and Ramsar)- SD5, ENV5
	Nationally Designated Sites (Sites of Special Scientific Interest)- SD5, ENV5
	Locally Designated Sites (Local Nature Reserves)- SD5, ENV5
	Locally Designated Sites (Local Wildlife Sites)- SD5, ENV5
	Scheduled Monuments- SD5, HE2
	Registered Parks and Gardens- SD5, HE2
	Conservation Areas- SD5, HE2
	Stockton to Darlington Railway- SD5, HE2, HE3

