

ECONOMIC GROWTH PLAN 2017-2020







CONTENTS

ECONOMIC GROWTH PLAN - WHAT IS IT? 4

WHAT WE WANT TO ACHIEVE 5

OUR GROWTH PRIORITIES AND ACTIVITIES

- Business 6 - 11
- Place 12 - 21
- People 22 - 30

DELIVERY PLAN 31 - 38

ECONOMIC GROWTH PLAN: WHAT IS IT?

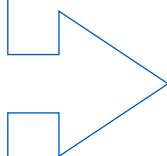
This Economic Growth Plan is part of a series of documents that set out Stockton-on-Tees Borough Council's **economic baseline**, its long-term **vision** and **ambitions** and medium-term **growth plans**

The **Local Economic Assessment** provides an **economic baseline** and analyses the Borough's characteristics; showing the nature and extent of the opportunities and challenges that exist in the economy

INFORMS



The **Economic Strategy** sets out a **long term vision** for Stockton-on-Tees; identifying a series of **key outcomes and ambitions** that we will seek to achieve in partnership over a 15 year period



Stockton-on-Tees Borough Council's Long-term vision is...

The businesses and people of Stockton-on-Tees are part of a thriving and productive Tees Valley economy; a City Region that is driving economic growth across northern and national economies

The Economic Growth Plan..

Sets out our **activities for growth** that will be delivered over a 3-year period

The performance of the local economy is a key driver that shapes the Borough of Stockton-on-Tees into a successful and growing location. Our businesses are an integral factor in creating and sustaining a diverse and strong local economy, and are essential to the continued prosperity of the area.

Economic productivity in the UK has fallen since 2010, and a targeted approach is required to recover lost growth in economic output, along with improving pay and living standards. At a time when there are limited public financial resources available we will intervene where we can add most value to the growth of the Borough, and will remain influential in our partnership approach. Our aim is to encourage and support business growth and investment that further strengthens the performance of the Borough in the context of an economically successful Tees Valley.

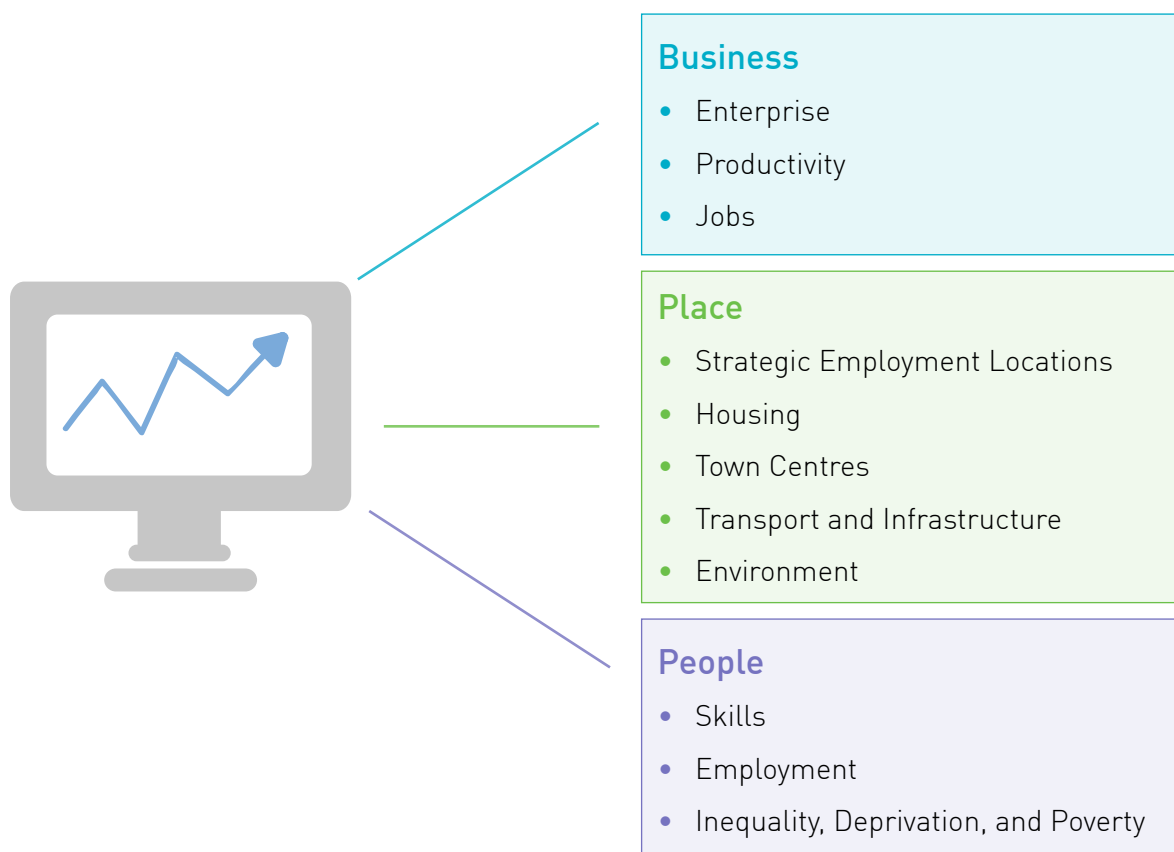
Some of the challenges we face in Stockton-on-Tees are not unique to us, however there are some areas of economic performance where opportunities exist to create the best possible environment for sustainable growth.

The perceptions that people have of Stockton-on-Tees remains an important consideration for us. Therefore, we will actively promote and market our economic plans for the Borough; to retain a high profile of a great place to do business and invest, and one where people want to live, work, play and visit.

ECONOMIC GROWTH PLAN: WHAT WE WANT TO ACHIEVE

BY 2020 WE WILL... OBJECTIVES	OUTCOMES
Have a successful business base where existing companies have experienced sustainable growth and new businesses have been created and attracted	A GREAT PLACE TO DO BUSINESS
Provide sufficient sites and premises in vibrant, connected and distinctive places that businesses are attracted to and people choose to live, work, play and visit	A VIBRANT, CONNECTED AND DISTINCTIVE BOROUGH
Ensure that people have the opportunity to learn/train and gain the appropriate level of skills to maximise the employment opportunities available in the economy	ECONOMIC OPPORTUNITIES FOR ALL

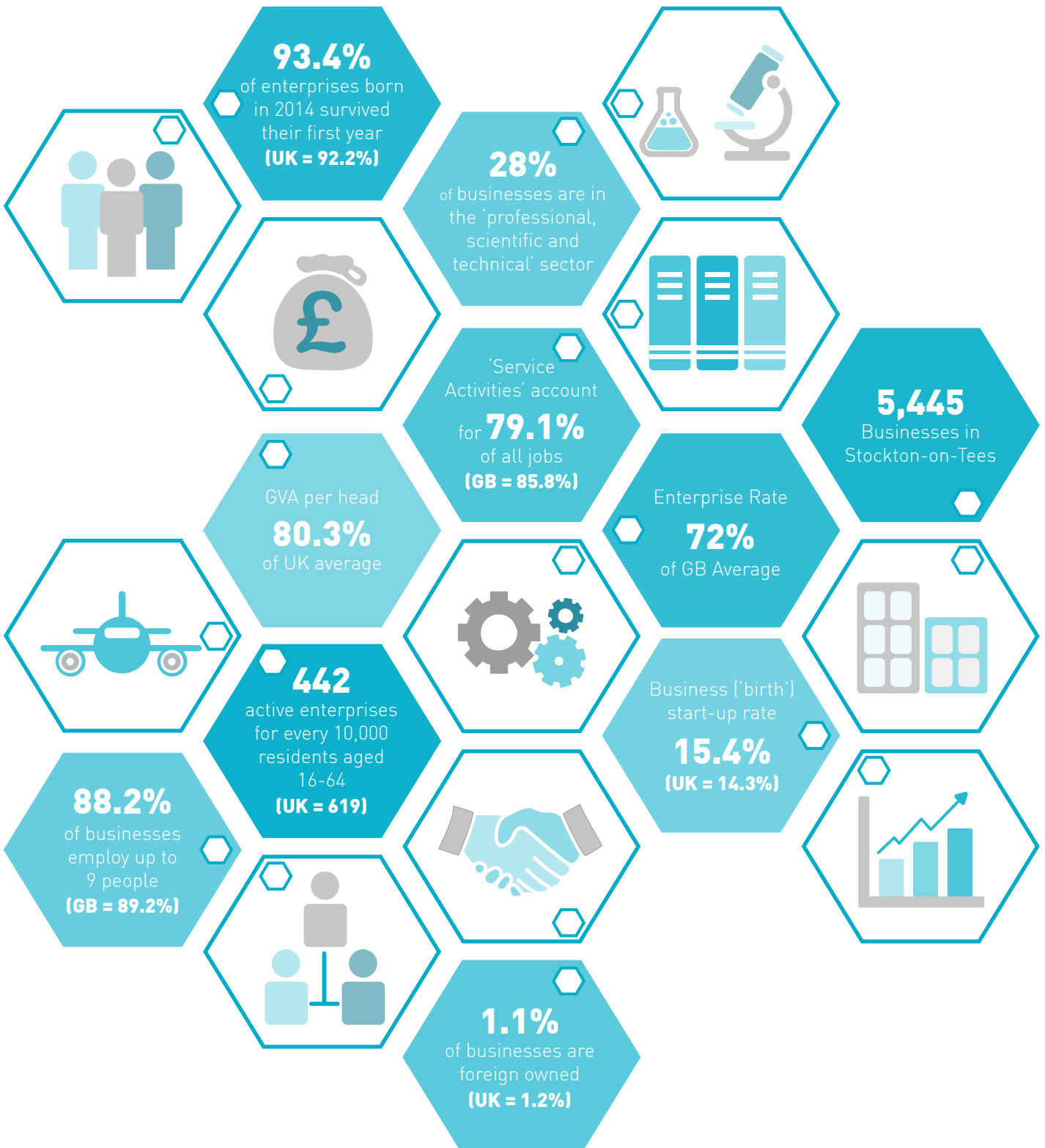
ECONOMIC GROWTH PLAN: OUR GROWTH PRIORITIES



ECONOMIC GROWTH PLAN: BUSINESS

A GREAT PLACE TO DO BUSINESS - Have a successful **business** base where existing companies have experienced sustainable growth and new businesses have been created and attracted

Key Facts



CHALLENGES

Building economic resilience into Stockton-on-Tees' economy to counter the negative impact that some global economic changes and challenges may have

The Borough contains a number of businesses of strategic importance that are energy intensive businesses and thus vulnerable to change in energy costs

Low levels of business-led Research, Innovation & Development investment

Low number of strategic businesses with national headquarters and associated decision making powers based within the Borough

Relatively low numbers of strategic businesses classed as large businesses

The majority of the Borough's businesses that make up the area's business base employ less than 10 people

High business death rate indicates a challenge in creating sustainable businesses

Insufficient jobs being created to meet the needs of the working age population

OPPORTUNITIES

Commercialisation of science and innovation emerging from the region's knowledge base

Capitalising on the use of new technologies and their introduction within wider business practices to bring greater productivity

Identify and develop an understanding of growth and growing sectors linked to the Government's Industrial Strategies not currently represented in the Borough

The Localisation of Business Rates 2020

Creation of start-up businesses from opportunities created by existing and growing sectors

Relationship building with identified high growth potential businesses

High business birth rates

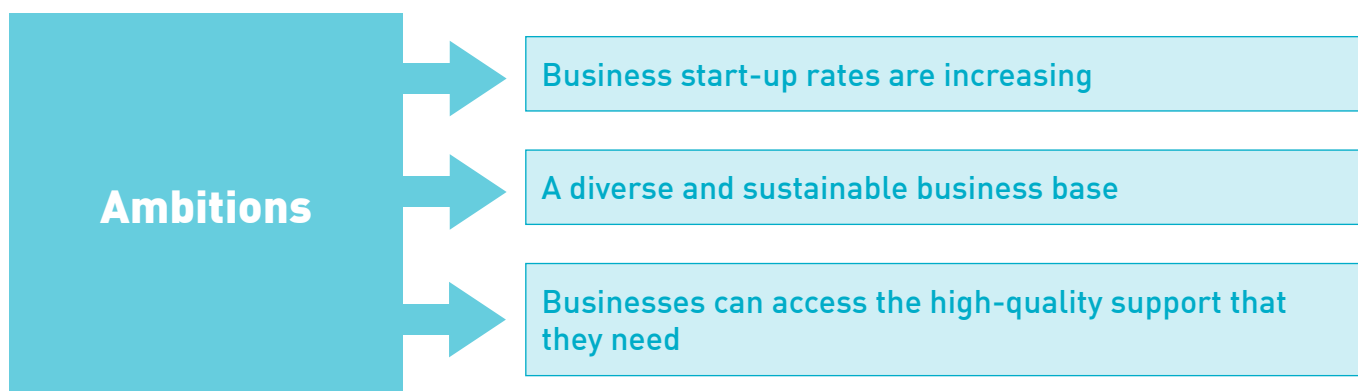
Utilisation of the Borough's developing District Energy scheme by the public and private sectors

Promotion of the Borough's range of Enterprise Zone sites

Promotion of the Borough's key location benefits, business success stories, and lifestyle advantages to targeted audiences

Promotion of Stockton Town Centre's revitalised offer to independent traders and national chains

PRIORITY 1A – ENTERPRISE



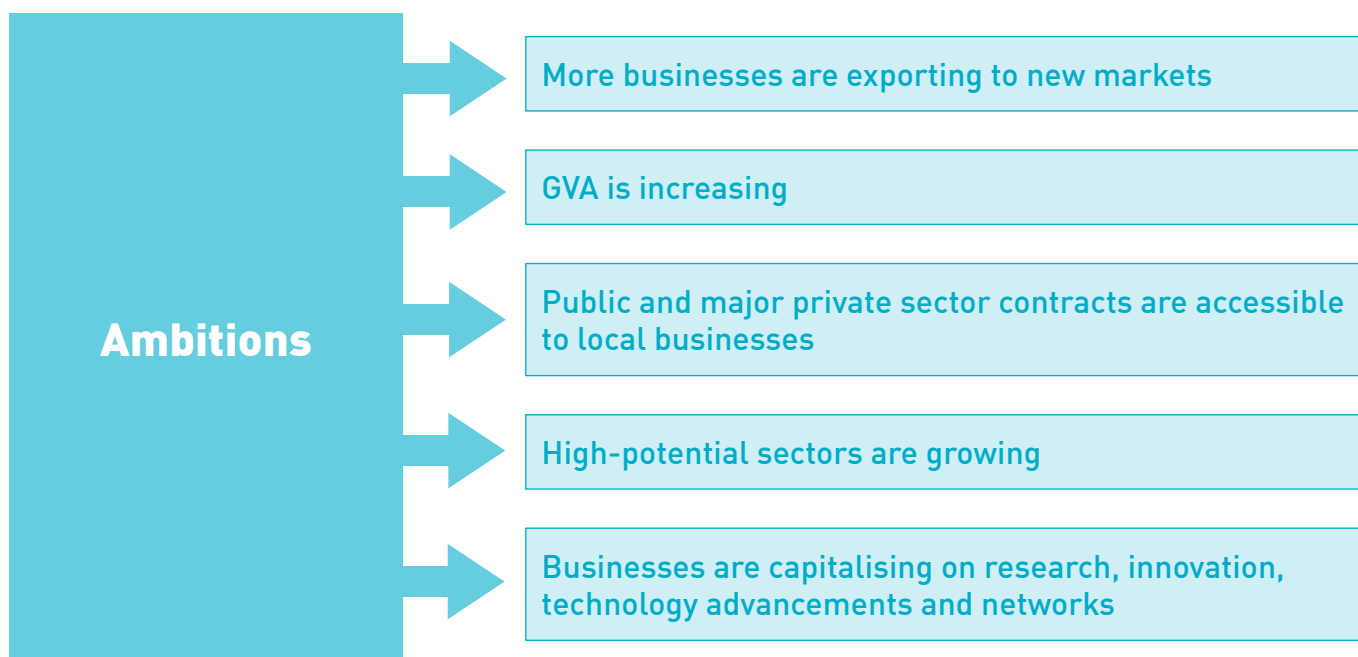
The Borough's business start-up rate is below the national average, as is the number of businesses per head of population. We would need an additional 2,000 businesses to fill the gap to the national average. It is not just about numbers, however; ensuring that the Borough's economy is diverse in its composition is also essential for long-term sustainability and future growth and investment - as some sectors decline new ones need to emerge. It is therefore important that we have the support in place to promote growth in the existing business base and enable new business ventures to emerge. Self-employment and new businesses in new sectors are key characteristics of a vibrant and inclusive economy. We will work with partners to ensure that the right business support is available and accessible and will seek to address gaps in the provision of that support.



Activities

- 1A(1) Encourage and support the next generation of young entrepreneurs to start and build new business ventures, highlighting self-employment as an alternative route-way to success
- 1A(2) Provide a package of support to new and existing retail businesses to improve the sustainability and diversity of the Stockton Town Centre offer
- 1A(3) Support business collaboration and networking within the Borough and the wider Tees Valley
- 1A(4) Provide support for new and existing businesses through the provision of information and assistance to access sources of advice, guidance and financial support
- 1A(5) Work with partners to provide the quality and types of business support services and information that facilitates the growth of the Stockton-on-Tees economy
- 1A(6) Work in partnership with Primary and Secondary Schools to design enterprise opportunities in the school curriculum
- 1A(7) Promote and encourage pupil uptake of business qualifications at GCSE, A Level and BTEC.

PRIORITY 1B – PRODUCTIVITY



Stockton-on-Tees' diverse business base has a global reach supplying products and services to major manufacturers (OEMs) and into key supply chains across a multitude of sectors. The retention and development of our businesses, particularly within key growth sectors, remains vital to the local economy and the future success of the Borough. Economic growth will be driven primarily by the ability of our businesses to expand, innovate, export, diversify, and access new supply chain opportunities. To do so, our businesses need the right tools and support at their disposal, to ensure these opportunities are accessible. We will provide a commitment to work with businesses and key partners to ensure the barriers to growth are addressed so that Stockton-on-Tees' businesses can grow and prosper.

Activities

- 1B(1) Support our existing strategic and key businesses to develop, grow and consolidate their continued successful trading within Stockton-on-Tees and ensure they remain satisfied with Stockton-on-Tees as a business location of choice
- 1B(2) Promote and improve access to public and private sector contract opportunities for Stockton-on-Tees' businesses
- 1B(3) Work with partners to increase the number of Stockton -on-Tees' businesses expanding or exporting, and support those that already export to increase their presence in key international markets
- 1B(4) Support the activities of innovation support providers including assisting businesses in the Borough to make the most of digital technologies to improve productivity

PRIORITY 1C – JOBS



The development of our economy is critical to boosting competitiveness and diversification, improving economic resilience, and ultimately providing the range of jobs we need to ensure that growth is both widespread and inclusive for Stockton-on-Tees' residents. We will work with our partners to identify and facilitate a range of new inward investment strategies and opportunities; promoting Stockton-on-Tees as a place to do business to secure new and sustainable job opportunities for residents and aid the long-term prosperity of the Borough.



Activities

- 1C(1) Proactively engage with and develop strong working relationships with growing and growth potential businesses to support and secure job opportunities
- 1C(2) Identify sector growth opportunities currently under-represented within the Stockton-on-Tees and wider Tees Valley economy to support the development of new and existing enterprises
- 1C(3) Identify the opportunities presented through the national industrial strategies that can be applied for the benefit of the economy of the Borough
- 1C(4) Effectively promote Stockton-on-Tees as a place to invest, trade and visit, highlighting its distinguishing pull factors within the Tees Valley
- 1C(5) Work with strategic partners to influence and attract inward investment opportunities to Stockton-on-Tees

By 2020 we will aim to deliver:

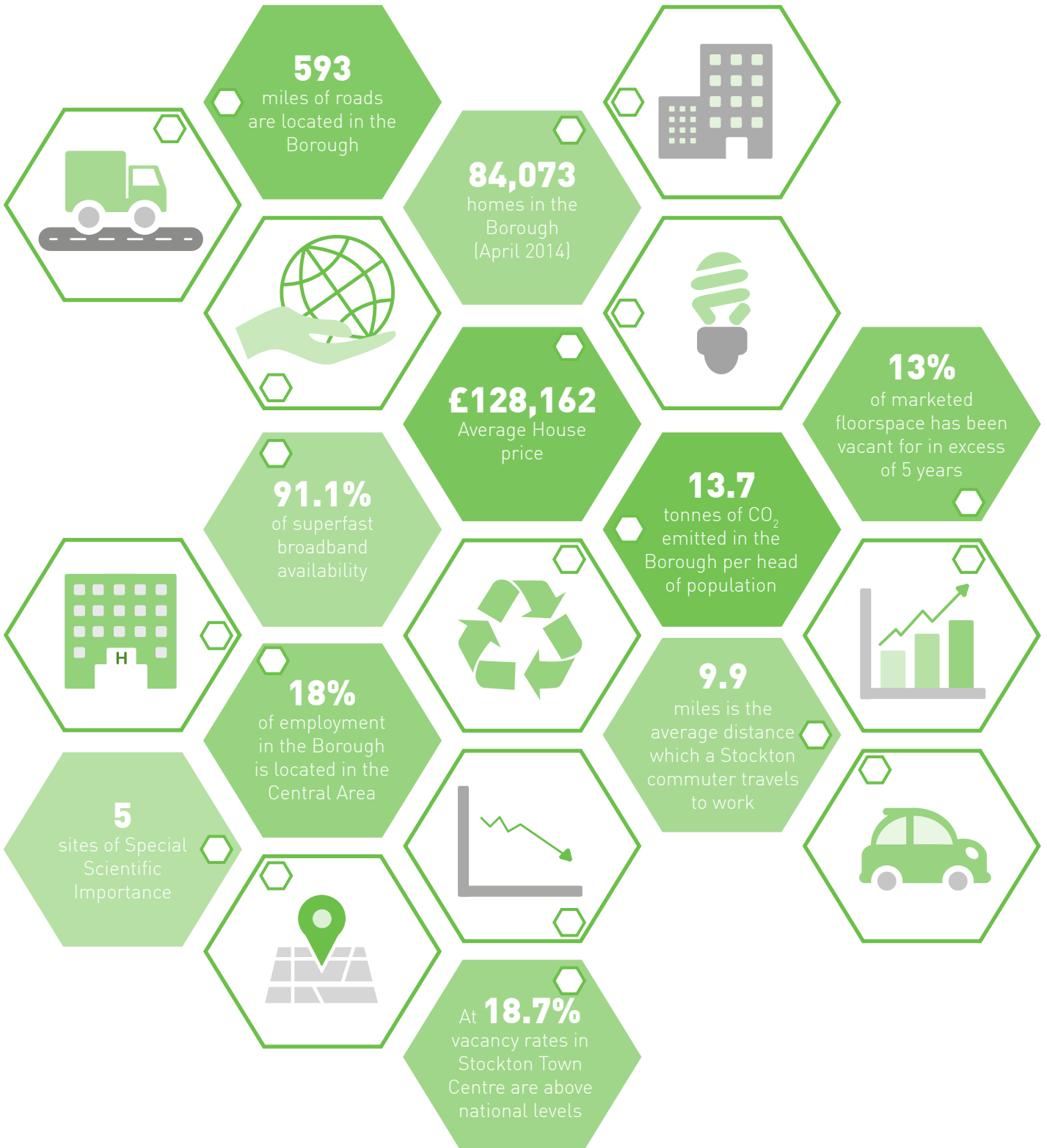
- * 80% of secondary schools and colleges in the Borough will have young people actively involved in enterprise activities or workshops;
- * Increased pupil uptake of business qualifications at GCSE, A Level and BTEC;
- * A business start-up programme specifically for young people will be established and XX new businesses owned by young people created;
- * 25 entrepreneurs will be supported to test their retail business idea and 35 new retail businesses will be set up in Stockton Town Centre;
- * Research will have identified the sectors under-represented in the Borough that represent opportunities for growth and investment;
- * Stockton-on-Tees' profile as a place to do business will be raised;
- * Working in partnership with providers and Universities, XX businesses will have benefited from innovation advice, including the application of digital technologies, to enable growth and improve productivity;
- * We will have built strong relationships with at least 200 strategic and growth businesses in order to sustain and create jobs and secure growth and investment opportunities;
- * The productivity gap (GVA per head) between Stockton-on-Tees and the national average will have narrowed;
- * At least 150 businesses will have made investments in premises, equipment or machinery leading to growth in the Borough;
- * The percentage of businesses that see Stockton-on-Tees as a great place to do business will have increased;
- * Working in partnership, XX more local businesses will be exporting or accessing new markets or new supply opportunities;
- * Sub-contract/supply opportunities from XX% of Stockton-on-Tees Borough Council's construction contracts will be made available to local businesses.



ECONOMIC GROWTH PLAN: PLACE

A VIBRANT, CONNECTED AND DISTINCTIVE BOROUGH - Provide sufficient sites and premises in vibrant, connected and distinctive **places** that businesses are attracted to and people choose to live, work, play and visit

Key Facts



CHALLENGES

Lack of high quality or available business accommodation
Surplus capacity of commercial premises can reduce the demand for new development
Almost half of all vacant office space is located in the Stockton Central Area
Vacancy rates in Stockton Town Centre are above national levels
Achieve a 5-year housing supply
Long-term vacancy rates of commercial premises
Poor broadband infrastructure to some strategic employment and residential locations
Land-banking by developers
Mortgage availability

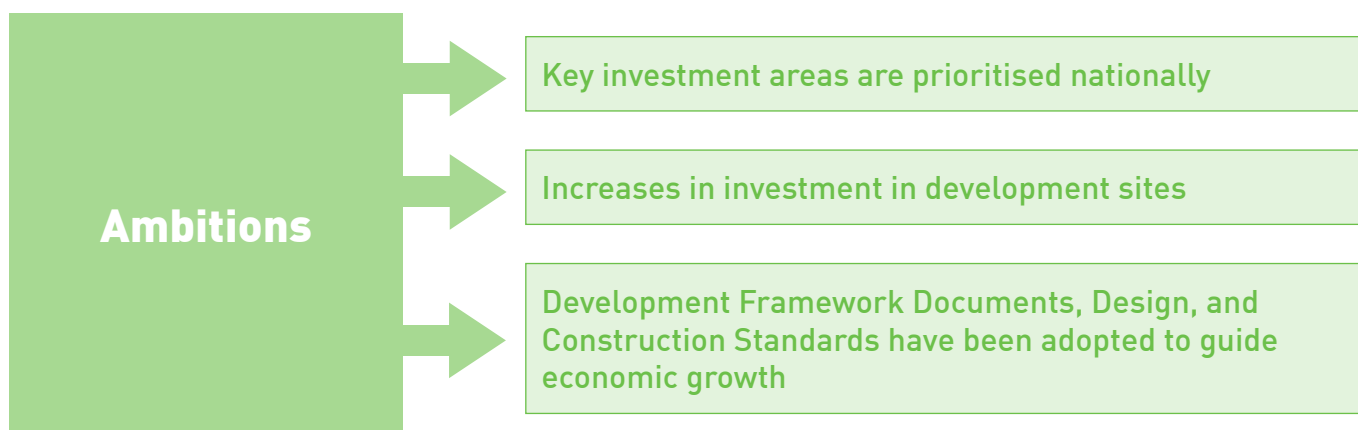
Lack of awareness of Tees Valley as a location
Viability of speculative commercial development
Some locations suffer from low demand housing and imbalance
In some open market locations residential properties in the Borough are less affordable compared with the regional average
Increasing demand for affordable housing
Long-term empty property rates
Some private sector housing developments have either not commenced or have stalled
Absent landlords in Stockton town centre
Perceptions of the Borough

OPPORTUNITIES

Re-occupation, re-development or alternative uses of vacant floorspace in Stockton Town Centre
Re-use of brownfield land and conversion/re-development of commercial floorspace for residential use
Productive use of vacant commercial floorspace to attract private sector investment
UK Capital of Culture Bid
Major exporting and logistics networks
Indirect benefits of high-speed rail programmes for investment and connectivity
Enterprise Zone sites

Profile our key transport projects for inclusion in northern and national funding priorities
Address the land-banking by developers
Deliver viable commercial premises
To encourage people to occupy vacant premises
Lower than national average house prices
Housing-led regeneration
New Homes Bonus
Tees Valley Land Commission
Maximise the use of the natural assets in the Borough
Work with developers to secure infrastructure for new development partners for affordable housing

PRIORITY 2A – STRATEGIC EMPLOYMENT LOCATIONS



The provision of strategic employment locations across the Borough remains pivotal to securing economic growth and sustaining locations for people to access jobs. However, there is a reducing supply of high-quality and available commercial premises and land that either meets current demand or is attractive to new business investment. By us guiding land-owners and supporting high-quality development in strategic locations across the Borough this will deliver major economic benefits for both businesses and residents. If necessary, we will work in partnership to stimulate investment and economic development.

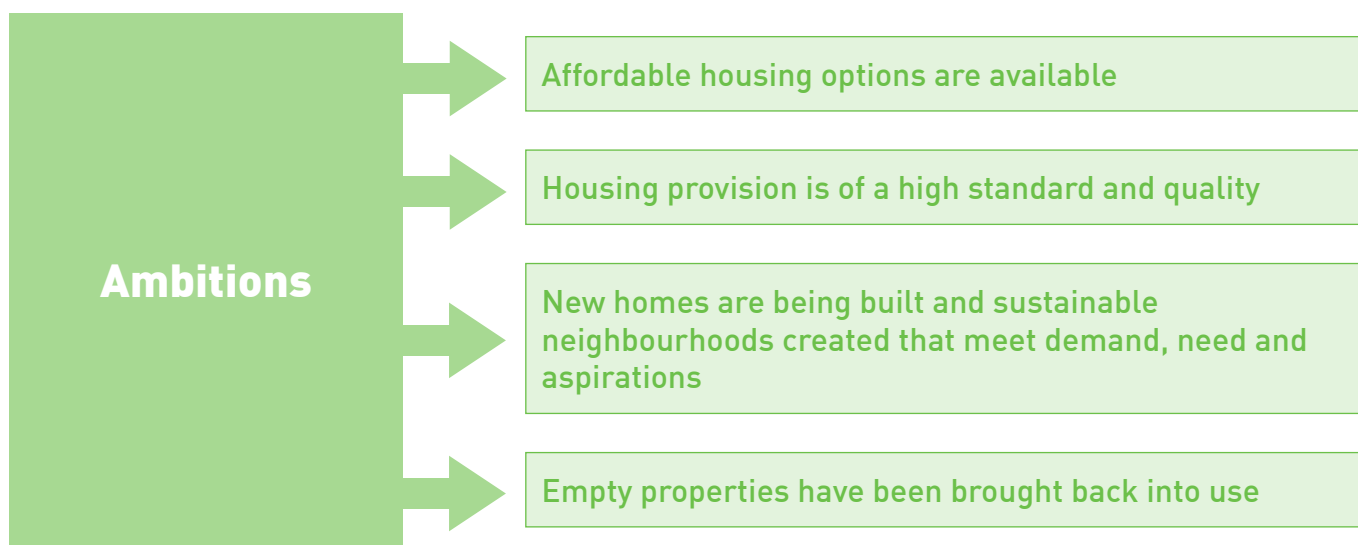
Activities

- 2A(1) Ensure the Local Plan continues to include sufficient available sites to meet the growth aspirations of existing businesses, and that these opportunities remain attractive to new businesses to secure inward investment
- 2A(2) Guide high-quality development and inform a positive approach to secure enabling infrastructure funding whilst encouraging private sector investments
- 2A(3) Encourage the re-occupation or re-use of vacant commercial premises at prime locations by public sector anchor institutions and private businesses
- 2A(4) Work in partnership with the Tees Valley Combined Authority to utilise the economic place based assets and strengths of the Borough to support growth in priority sectors

- 2A(5) Work in partnership with the North Shore Development Company to complete the next phases of the North Shore and wider site
- 2A(6) Development of proposals for major redevelopment schemes with private sector backing at the Southern gateway to Stockton Town Centre
- 2A(7) Work with the Tees Valley Land Commission and public sector partners to bring forward development sites that meet economic growth priorities
- 2A(8) Work with land-owners to identify a portfolio of development-ready commercial sites to be promoted to prospective businesses and tenants



PRIORITY 2B – HOUSING



Whilst some new private sector housing development will be located within the Stockton Central Area and adjacent sites, it is not plausible for these sites to deliver all of the new housing needed, nor is it desirable to limit our aspiration to improve housing standards in this location only.

We will work to deliver high-quality homes for our growing local population by influencing decisions affecting the location and quality of private sector housing provision in partnership with housing providers. When we do this, we will consider the needs of the local population, in particular the projected growth in the number of people who are beyond retirement age.

In extreme circumstances we will lead on the delivery of schemes that will address stalled market housing sites or have significant economic and regeneration benefits.

Where possible, we will intervene and work in partnership where there are locations that suffer from low demand housing and imbalance to re-model neighbourhoods through demolition, rebuild and refurbishment options to create sustainable communities where there is choice from a high quality housing offer.

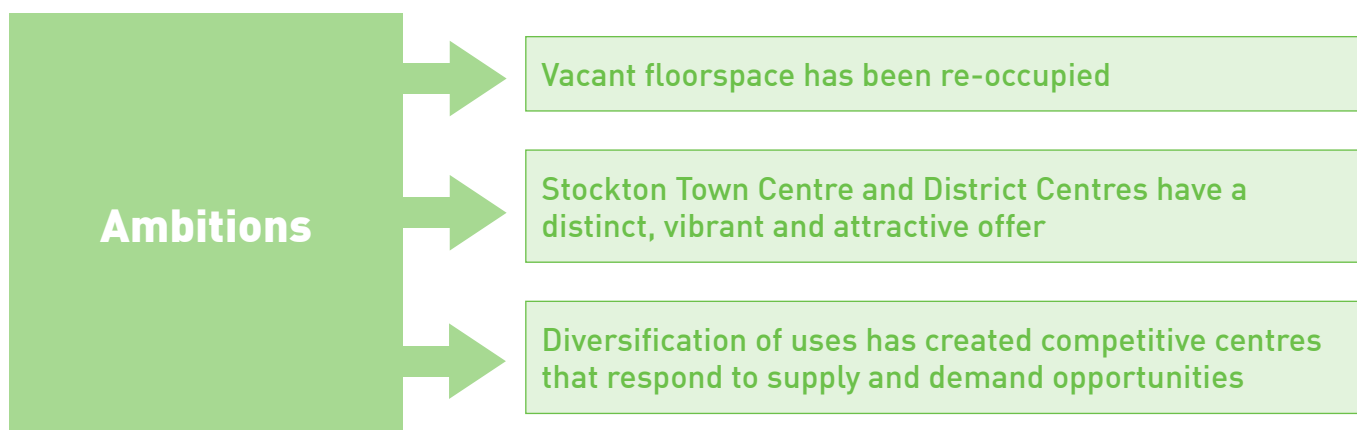


Activities

- 2B(1) Deliver the infrastructure and development requirements at West Stockton in line with the DFD
- 2B(2) Identify Wynyard as a location for further housing in the Local Plan to become a sustainable settlement, and work with public sector partners to deliver essential infrastructure
- 2B(3) Deliver housing-led regeneration and renewal schemes at Hardwick Green, Norton Park, West End Gardens, and Victoria Estate
- 2B(4) Influence and work in partnership with developers and registered social landlords to deliver affordable housing provision of a high standard and quality
- 2B(5) Work with private-sector housing developers and land-owners to consider options to bring forward stalled brownfield housing sites, in particular at Queens Park North and Boathouse Lane
- 2B(6) Production of an Affordable Housing Strategy
- 2B(7) Work with land-owners and key stakeholders to re-invigorate stalled proposals for redevelopment of Boathouse Lane
- 2B(8) Work with the Tees Valley Combined Authority and other public and private sector partners to explore aspirations for the long-term redevelopment of Tees Marshalling Yards



PRIORITY 2C – TOWN CENTRES



Over recent years there has been significant public and private sector investment in our Town Centres with the aim of creating more competitive and attractive places where people want to live, work and visit.

With large numbers of us living and working in and around Town Centres, almost all of us depend on the Town Centre in some way; either as individuals or families as a place for jobs, socialising, shopping, entertainment, leisure, culture, public services and transport.

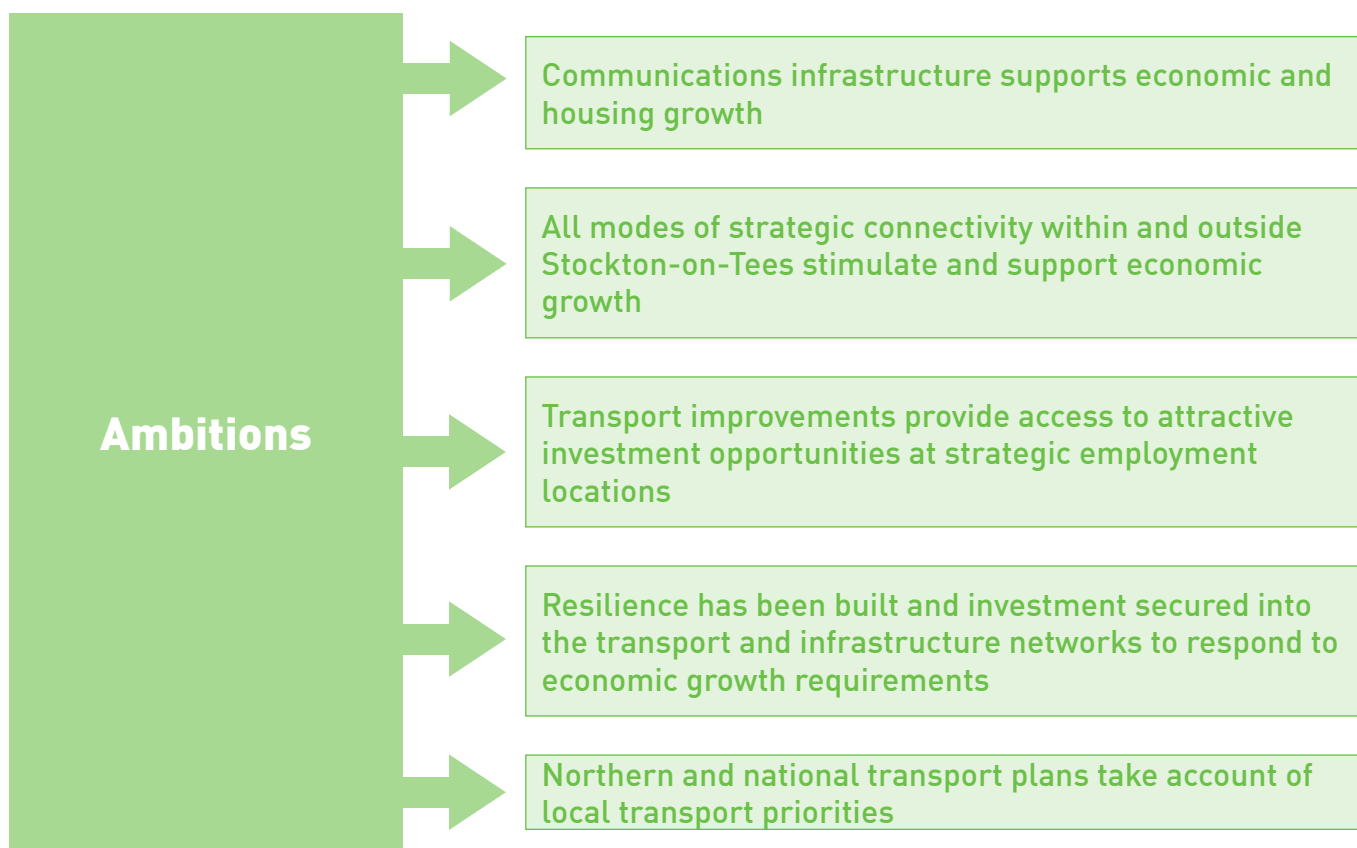
Economic growth exists beyond purely retail within a Town Centre and its future is likely to be as a multifunctional destination - consumers want a sense of “experience”. It is therefore important for us to understand the way users interact with the Town Centre environment and why and how changes to the economic environment and local population will affect the way the Town Centre is used and the services that consumers would expect to find there.

It is vital for the ongoing success of the Town Centres that we need to continue to work with public and private sector partners to enable the right environment for consumers, job creation, and for businesses to survive, locate here and grow.

Activities

- 2C(1) Work in partnership with Heritage Lottery and property owner to refurbish and re-occupy the Globe Theatre
- 2C(2) Heritage Lottery funding bid submitted and approved, and commencement of targeted actions to reduce vacant floorspace in the ‘Northern High Street’ gateway to Stockton Town Centre
- 2C(3) Target key vacant premises across Stockton Town Centre and, where possible, work with owners to facilitate re-occupation or re-use of these premises
- 2C(4) Review and understand the flexibility and capacity of Stockton Town Centre units to develop a supply at the right scale and format for move-on growth businesses and potential occupiers
- 2C(5) Support the Stockton Town Centre BID and Healthy High Streets programme
- 2C(6) Identify the growth potential of diversifying uses across Stockton Town Centre
- 2C(7) Identify the opportunities to extend the public realm and environmental quality of town centres
- 2C(8) Support, develop and market a broad programme of specialist markets, events and festivals

PRIORITY 2D – TRANSPORT AND INFRASTRUCTURE



Excellent transport and communications connectivity is essential for the future development of the Borough and Tees Valley as it will stimulate, support and be an enabler and driver of economic growth. Overcoming the barriers to people accessing jobs and learning in the local area, for the efficient movement of goods and services, and high-speed digital connectivity for businesses and residents are essential components to achieving our economic growth ambitions.

Whilst Stockton-on-Tees is well connected across Tees Valley it will be vital that the strategic transport networks link the Borough to key markets both nationally and internationally, and that our economic assets are maximised to benefit our existing businesses and residents, and to attract new business investment and people to the area.



Activities

- 2D(1) Ensure the Local Transport Plan considers the phasing around the growth priorities and development of pipeline projects
- 2D(2) Influence Tees Valley Bus Network decisions to ensure accessibility to strategic employment locations
- 2D(3) Support the Tees Valley Combined Authority in delivery of improved broadband services in commercial and residential areas, in particular those in rural locations
- 2D(4) Secure Local Growth Funding to deliver major transport schemes in the Borough
- 2D(5) Work with the private sector to support the operation of Thornaby to London train services from 2020
- 2D(6) Improve the east-west A66 corridor from the A1(M)
- 2D(7) Provide an additional major road crossing of the River Tees



PRIORITY 2E – ENVIRONMENT



We take our responsibility to the environment seriously and will do what we can to protect it for future generations. We want a Borough that is clean and green, with appropriate and sustainable housing provision and a high quality environment that contributes to economic growth. We will deliver our 'Green Vision' which is 'to achieve a healthy, vibrant and successful low carbon economy, resilient to the challenges of climate change and resource pressures'.

Activities

- 2E(1) Work with the Tees Valley Combined Authority to develop low carbon initiatives that support those sectors and businesses that are most affected by environmental regulation
- 2E(2) Ensure the principles of sustainable development are embedded in the Local Plan, and underpin future economic growth
- 2E(3) Ensure that green infrastructure including parks, countryside, open spaces and rivers meet the highest environmental standards
- 2E(4) Protect and enhance the local distinctiveness, heritage and biodiversity of the natural and built environments
- 2E(5) Work with partners, commercial organisations, and the wider community to reduce Borough-wide CO₂ emissions

- 2E(6) Take account of predicted changes to the future climate, and the potential impact to Council services and local environment, implement appropriate schemes, adaptation measures and ensure business continuity
- 2E(7) Development and management of green infrastructure to promote health and wellbeing, enhance quality of place, and support sustainable development and economic growth
- 2E(8) Work with the Tees Valley Combined Authority to develop and submit a UK Capital of Culture bid which capitalises on the unique creative and cultural strengths of Stockton-on-Tees and Tees Valley
- 2E(9) Deliver district heat and power networks through capture of process heat to improve the financial sustainability of business and reduce carbon emissions.



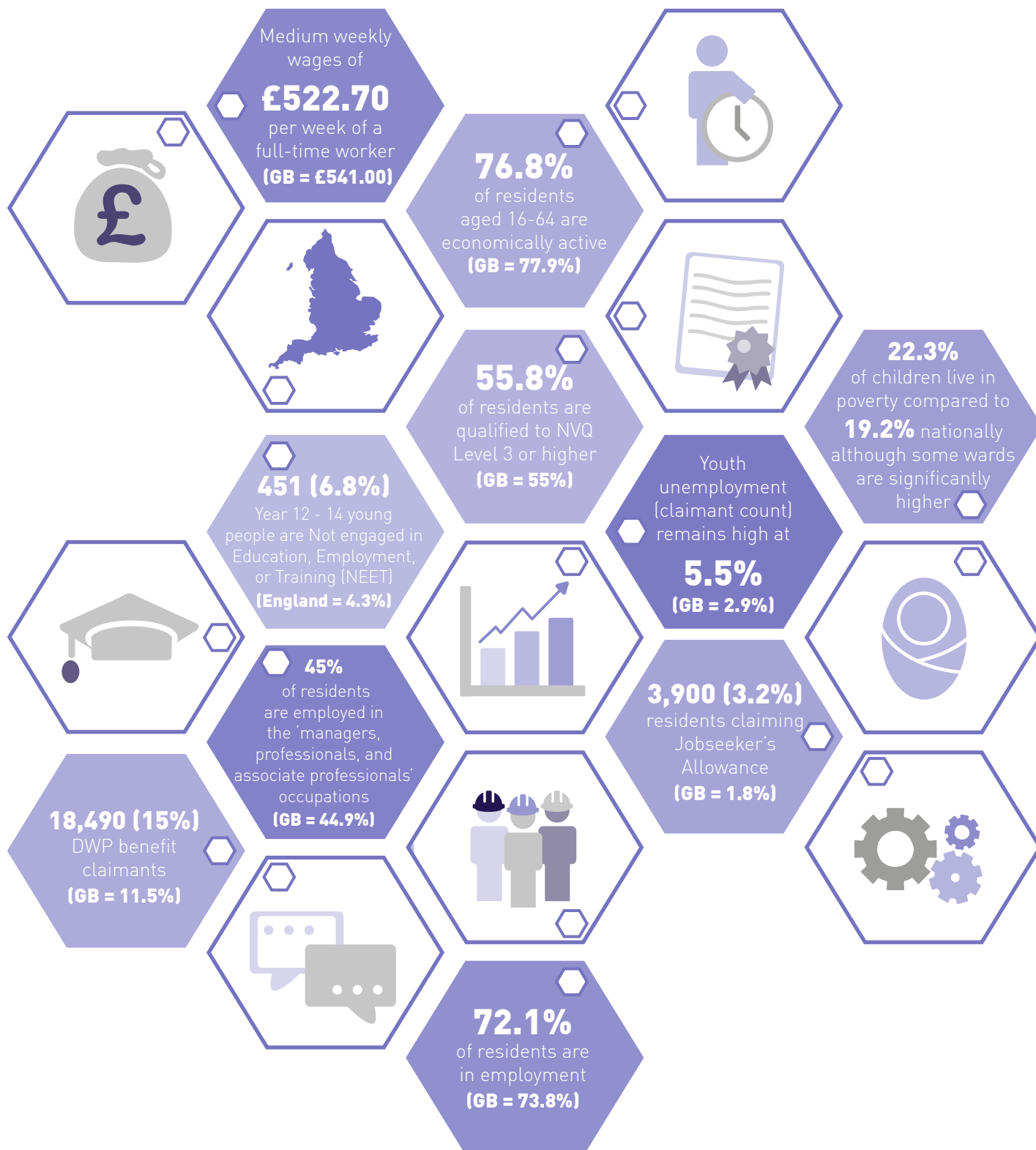
By 2020 we will aim to deliver:

- * New or enhanced green infrastructure to over 30 sites through new development and implementation of the Green Infrastructure Delivery Plan;
- * Development Framework Documents for Durham Lane, Wynyard and other strategic employment locations have been adopted;
- * Adoption of 2 Guides for 'Design of New Developments' and 'Construction Standards';
- * A Framework provided for the North Tees area working as part of the Tees Estuary Partnership;
- * A reduction in vacant commercial floorspace;
- * Support the delivery of 82 new homes on the North Shore site;
- * Delivery of a 125 no. bedroom hotel and other leisure uses on the former Dairy site;
- * Proposals developed for the Southern gateway to Stockton Town Centre;
- * Development proposals progressed for Boathouse Lane and Queens Park North sites;
- * Long-term redevelopment vision worked-up for Tees Marshalling Yards;
- * DFD implemented for new urban extension at West Stockton, and delivery of new high-quality homes;
- * Commencement of the Victoria estate housing regeneration scheme to deliver a new model of urban living;
- * Completion of the Hardwick Green, Norton Park, and West End Gardens housing regeneration schemes including the delivery of 275 new homes;
- * Secure a minimum of 15% to 20% of affordable housing through new developments;
- * An adopted Local Plan, which will influence the location of new housing and economic growth uses;
- * 98% superfast broadband coverage across the Borough by end of 2018;
- * Increased patronage numbers at the Borough's railway stations;
- * The refurbishment and reoccupation of the Globe Theatre;
- * Secure Heritage Lottery Funding for the 'Northern Gateway' scheme;
- * Increasing occupied premises in Stockton Town Centre from 81%, with a number of long-term vacant units brought back into use;
- * Reduction of 18%, or 411,460 tonnes, in CO₂ emissions on 2013 levels;
- * Reduction of 21%, or 5556 tonnes, in Council CO₂ emissions from 2014/15 levels;
- * Produce a strategic Outline Business Case for funding the Tees Crossing Strategic Road Network proposal;
- * 70 long-term empty residential properties brought back into use.

ECONOMIC GROWTH PLAN: PEOPLE

ECONOMIC OPPORTUNITIES FOR ALL - Ensure that **people** have the opportunity to learn/train and gain the appropriate level of skills to maximise the employment opportunities available in the economy

Key Facts



CHALLENGES

Claimant unemployment affecting some age groups more than others
Long-term unemployment is more prevalent for those aged over 50
Claimant Count JSA of 18-24 year olds remains high (780. 4.5%. GB = 2.5%)
Areas of high deprivation and low skills
Top barrier to growth expressed by businesses is in getting the skills they need
Ageing population and a fall in the working age population
Skills shortage vacancies
Almost three times more people claiming sickness benefits compared to Jobseeker's Allowance/Universal Credit
42,800 (35.5%) residents qualified to NVQ Level 4 compared to 37.1% nationally
10,500 (9.8%) residents have no qualifications, which is higher than nationally

Create more employment opportunities
Those with work limiting disabilities and health conditions face considerable barriers to securing employment
Level of real wages has declined since the recession
BME employment rate 13% lower than the White employment rate (national)
Children from low income households are less likely to achieve in many aspects of their lives including reaching their academic potential and therefore securing employment as adults
22.3% of our children live in poverty, compared to 19.2% nationally although some wards are significantly higher
Future funding of supported housing for vulnerable households
Impact of new Welfare Reforms on vulnerable residents

OPPORTUNITIES

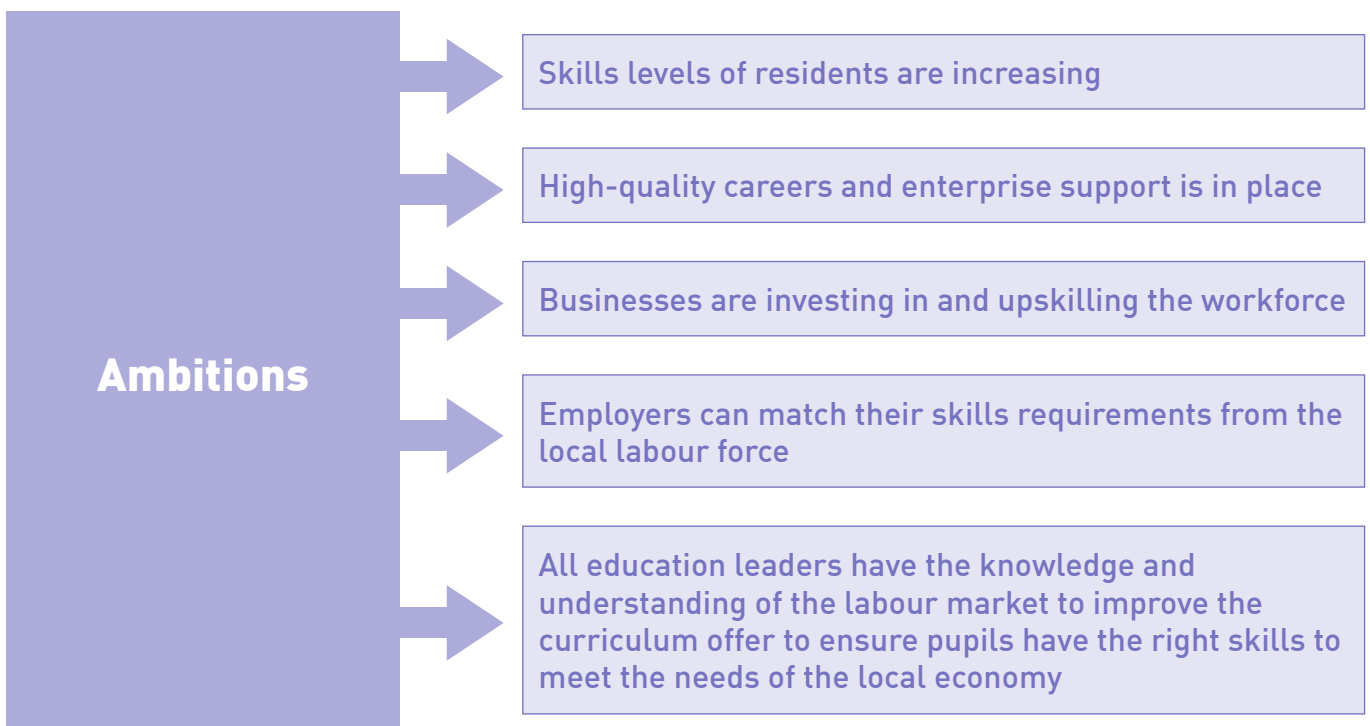
High rate of economic activity
Residents with no qualifications reducing
Cost competitive and skilled workforce
Replacement and new jobs required within the workforce
Introduction of the Apprenticeship Levy
Residents with Level 4 qualifications is increasing
European Structural Investment Fund Opportunities:

- Inclusive Labour Markets
- Skills for Growth

Targeted Recruitment & Training as part of the Social Value Act and through Planning & Development Agreements

Job opportunities arising due to replacement demand in the workforce
Establishment of the Tees Valley Careers & Enterprise Company
Development of advanced and higher level apprenticeships
Implementation of the Government's BME 2020 plan
Devolution of Employment & Skills funding to the Combined Authority
Scaling up the 'Troubled Families Programme' and an expansion of parenting provision
Providing opportunities for independent living
Working with registered housing providers to address the needs of vulnerable residents

PRIORITY 3A – SKILLS



Ensuring that the skills and labour supply in the area meets business needs is critical for a full economic recovery and creating a resilient and diverse economy that will provide future sustainable economic growth. Stockton-on-Tees boasts a highly skilled workforce. In general, the overall skill levels of the residents of Stockton-on-Tees at NVQ 2 and 3 is above the national average. However, despite recent improvements, the Borough performs less well at the higher skill levels and still has some residents with no qualifications.

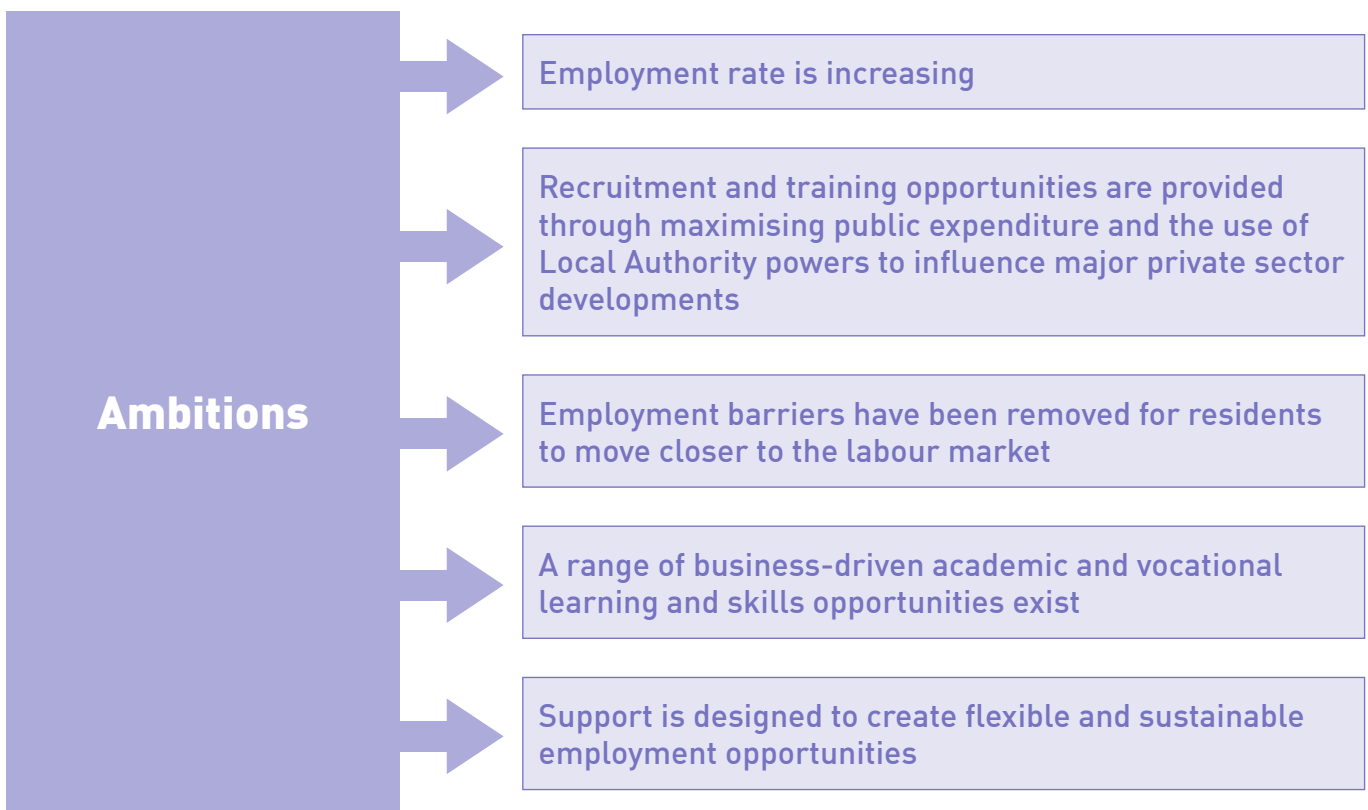


Activities

- 3A(1) Invest £361K to secure £1.4m of ESF/YEI funding to support 261 15-29 year olds move closer to the labour market
- 3A(2) Increase overall skill levels by improving access to appropriate learning and training through the forthcoming ESF / SFA skills programmes, in particular, 'Skills Support for the Unemployed' and 'Skills Support for the Workforce'
- 3A(3) Promote and encourage people to undertake higher level/degree apprenticeships that exist and those currently being developed by the Tees Valley Higher and Degree Apprenticeship Collaboration (HDAC) Group
- 3A(4) Reduce the number of people with no or low level qualifications by promoting 'Skills Support for the Unemployed', Careers Education, Information, Advice & Guidance (CEIAG) and ESOL provision for those people with English as a second language
- 3A(5) Encourage investment in workforce skills development with the introduction of the 'Skills Support for the Workforce' contract
- 3A(6) Support the establishment and further development of the Tees Valley Careers and Enterprise Company to improve Careers, Education, Information, Advice and Guidance (CEIAG) in schools
- 3A(7) An improved education curriculum offer provides appropriate learning opportunities for pupils to gain relevant qualifications/ experience
- 3A(8) Build on the tripartite Select Scrutiny Committee Review of Employment & Education to continue to work collaboratively to encourage Stockton-on-Tees' schools to actively be involved with the Careers and Enterprise Company to improve the CEIAG available to students in the Borough
- 3A(9) Promote and encourage pupil work experience and mentoring in businesses in the Tees Valley growth sectors
- 3A(10) Continue to support businesses and their workforce in any redundancy situation by accessing appropriate funding to up-skill staff



PRIORITY 3B – EMPLOYMENT



The number of residents in Stockton-on-Tees that are economically active is high and the proportion of those in employment is only marginally behind the national comparison, but well ahead of the regional figure.

Employment levels need to continue to increase, particularly among those groups that are currently under-represented in the labour market. Youth unemployment and those residents experiencing work-limiting disabilities and health conditions continue to remain a challenge.



Activities

- 3B(1) Invest £361K to secure £1.4m of ESF/YEI funding to secure sustained employment for a minimum of 127 young people under 25 years of age
- 3B(2) Secure further increases in the employment rate by reducing inactivity in the labour market
- 3B(3) Develop high quality vocational routes into work, particularly for young people
- 3B(4) Provide a more intensive and distinct level of support for those furthest from the labour market, such as, supported employment programmes for those people with Learning Disabilities, or Looked After Children
- 3B(5) Increase participation in the labour market by creating a range of flexible jobs to enable under-represented groups access to employment, for example, job carving
- 3B(6) Further develop the Targeted Recruitment and Training approach to maximise training and employment opportunities through the use of social and community benefit clauses in public sector procurement and through Planning and Development Agreements
- 3B(7) Ensure a clear strategic commitment to increasing employment support and opportunities for young people in and from care
- 3B(8) Influence and support the delivery of sector-led apprenticeship route-ways to local businesses and the young people of the Borough
- 3B(9) Obtain funding to establish a pilot programme to secure apprenticeships for a minimum of 16 Looked After Children
- 3B(10) Develop a social enterprise to support and employ up to 8 people with learning disabilities



PRIORITY 3C – INEQUALITY, DEPRIVATION, AND POVERTY



The United Kingdom is experiencing a growth in poverty and a decline in social mobility and this is likely to continue even as the economy improves. This position is comparable locally; Stockton-on-Tees has 22.0% of children living in poverty. Tackling inequality, deprivation and poverty through employment is an essential part of sustainable development, with the guiding principles of personal wellbeing, social cohesion and inclusion, and ‘opportunities for all’.

The effects of children and families growing up in poverty are shown to have far reaching and long-term consequences both socially in terms of outcomes, life chances and also economically. These effects manifest themselves at a number of levels - on individuals, families, the wider community and society as a whole.



Activities

- 3C(1) Increase participation in the labour market by creating a range of flexible jobs to enable under-represented groups, such as, returners to the labour market, disabled people etc., access to employment, for example, job carving, flexible working
- 3C(2) Provide support to people who are disadvantaged/furthest away from the labour market who wish to improve their employment prospects through the 'Building Better Opportunities' initiative
- 3C(3) Support the implementation of 'A Brighter Borough for All' tackling poverty strategy with the key aims of:
- Ensuring every child receives the best start in life;
 - Maximising household income;
 - Maximising access to support for vulnerable groups
- 3C(4) Target specific geographical areas within the Borough to promote and support access to the 'Wheels to Work' initiative to help people take up offers of employment

- 3C(5) Deliver proactive approaches to homelessness



By 2020 we will aim to deliver:

- * A minimum of 261 15-29 year olds will have improved their skill levels and moved closer to the labour market through YEI funding;
- * Existing skills of the workforce will have increased from the baseline across all levels from Level 2 through to Level 4 and the number of residents with no qualifications will have reduced;
- * A greater number of residents will have accessed and completed higher level/degree apprenticeships;
- * All Stockton-on-Tees' schools will be actively involved with the Careers & Enterprise Company and all students will receive improved quality impartial CEIAG in line with the Gatsby Report;
- * An increase in pupils undertaking work experience and mentoring;
- * The rate of year 12/13 young people who are NEET will be below the national target of 8.5% and the number of 'Not Known' will be below 2.5%;
- * A minimum of 127 young people will have secured sustainable employment through the YEI;
- * The local economy will be more resilient and as a result there will be year on year increases in the employment rate;
- * Stockton-on-Tees Borough Council and the public sector will have a minimum of 2.3% of their workforce undertaking apprenticeship frameworks/standards;
- * The Targeted Recruitment & Training approach will be fully embedded across Stockton-on-Tees Borough Council to maximise employment opportunities through the use of social and community benefit clauses in public sector procurement and through Planning and Development Agreements;
- * A reduction in the number of children living in poverty;
- * The most vulnerable in society will have access to intensive and distinct programmes to help move them closer to the labour market and into employment.



DELIVERY PLAN

PRIORITIES	ACTIVITIES	Financial years unless stated otherwise 2017-2020												DELIVERY CONTINUES BEYOND GROWTH PLAN TERM			
		Q4	Q1	Q2	Q3	Q4	Q1	Q2	Q3	Q4	Q1	Q2	Q3				
1A - ENTERPRISE																	
1B - PRODUCTIVITY																	
1C - JOBS																	
2A - STRATEGIC EMPLOYMENT LOCATIONS																	
2B - HOUSING																	
2C - TOWN CENTRES																	
2D - TRANSPORT AND INFRASTRUCTURE																	
2E - ENVIRONMENT																	
3A - SKILLS																	
3B - EMPLOYMENT																	
3C - INEQUALITY, DEPRIVATION, AND POVERTY																	
BUSINESS																	
	1A(1) Encourage and support the next generation of young entrepreneurs to start and build new business ventures, highlighting self employment as an alternative route-way to success																
	1A(2) Provide a package of support to new and existing retail businesses to improve the sustainability and diversity of the Stockton Town Centre offer																
	1A(3) Support business collaboration and networking within the Borough and the wider Tees Valley																
	1A(4) Provide support for new and existing businesses through the provision of information and assistance to access sources of advice, guidance and financial support																
	1A(5) Work with partners to provide the quality and types of business support services and information that facilitates the growth of the Stockton-on-Tees economy																

PLACE										Q4	Q1	Q2	Q3	Q4	Q1	Q2	Q3	Q4	Q1	Q2	Q3	Q4				
1A	1B	1C	2A	2B	2C	2D	2E	3A	3B	3C																
											2D(3)	Support the Tees Valley Combined Authority in delivery of improved broadband services in commercial and residential areas, in particular those in rural locations														
											2D(4)	Secure Local Growth Funding to deliver major transport schemes in the Borough														
											2D(5)	Work with the private sector to support the operation of Thornaby to London train services from 2020														
											2D(6)	Improve the east-west A66 corridor from the A1(M)														
											2D(7)	Provide an additional major road crossing of the River Tees														
											2E(1)	Work with the Tees Valley Combined Authority to develop low carbon initiatives that support those sectors and businesses that are most affected by environmental regulation														
											2E(2)	Ensure the principles of sustainable development are embedded in the Local Plan, and underpin future economic growth														
											2E(3)	Ensure that green infrastructure including parks, countryside, open spaces and rivers meet the highest environmental standards														
											2E(4)	Protect and enhance the local distinctiveness, and heritage and biodiversity of the natural and built environments														
											2E(5)	Work with partners, commercial organisations, and the wider community to reduce Borough-wide CO ₂ emissions														
											2E(6)	Take account of predicted changes to the future climate, and the potential impact to Council services and local environment, implement appropriate schemes, adaptation measures and ensure business continuity														
											2E(7)	Development and management of green infrastructure to promote health and wellbeing, enhance quality of place, and support sustainable development economic growth														
											2E(8)	Work with the Tees Valley Combined Authority to develop and submit a UK Capital of Culture bid which capitalises on the unique creative and cultural strengths of Stockton-on-Tees and Tees Valley														
											2E(9)	Deliver district heat and power networks through capture of process heat to improve the financial sustainability of business and reduce carbon emissions.														



Stockton-on-Tees Borough Council
Municipal Buildings
PO Box 34
Municipal Buildings
Church Road
Stockton-on-Tees
TS18 1LD

Email: EGDS@stockton.gov.uk
Telephone: 01642 526050
Website: www.stockton.gov.uk



Stockton-on-Tees
BOROUGH COUNCIL

Big plans, bright future