

# School Admissions arrangements for September 2016

Consultation  
9<sup>th</sup> – 12<sup>th</sup> February 2015



Stockton-on-Tees  
BOROUGH COUNCIL

Children and Young People

Big plans for the young people of our Borough

# National requirements

- LA has a statutory duty to review and determine school admissions arrangements every year
- If this suggests changes then this is subject to consultation
- The consultation must be for a minimum of 8 weeks and must be conducted between 1<sup>st</sup> November and 1<sup>st</sup> March
- Recommendation to review and consult as a minimum at least once every 7 years

# Local position

- School Admissions arrangements were added to the work programme for Children and Young People's Scrutiny Committee in March 2014.
- It was agreed that a review of the current approach to school admissions arrangements would be considered in full, in accordance with the recommendation to review and consult every 7 years. The last significant review took place in 2010.
- With regard to admissions for 2016, four priorities were identified.
- Proposals from these four priorities were agreed by Cabinet in December 2014, together with the consultation process.

# The four priorities for September 2016

- Ingleby Barwick Primary admission zones;
- Secondary Admission zone arrangements for south Stockton and Ingleby Barwick;
- Primary places for north/central Stockton;
- Increase the number of places at Ash Trees Primary School for September 2015 from 124 to 150.

# The proposals for September 2016

- The proposed scheme for co-ordinating admission arrangements and timetable for the school year 2016/17
- The proposed admission numbers for Primary and Secondary schools for September 2016
- The proposed admission zones changes to primary schools in Ingleby Barwick
- The proposed admission zone arrangements for secondary schools in the South of the Borough

# The consultation process

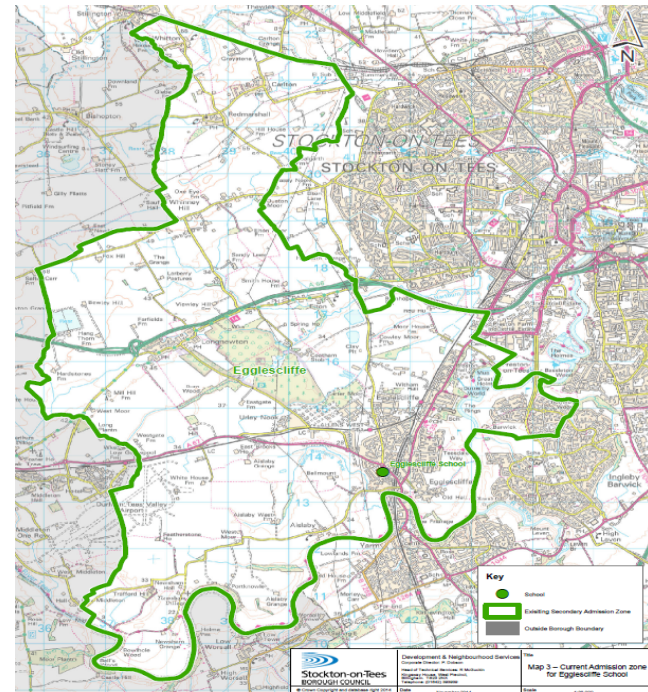
- Informal consultation to develop the proposals, held in October/November 2014
- Formal consultation commenced on the 15<sup>th</sup> December and was due to close on the 13<sup>th</sup> February. This has now been extended and will now close on 28<sup>th</sup> February.
- Responses via:
  1. Survey Monkey – link accessed through <http://www.stockton.gov.uk/stocktoncouncil/consultations/currentconsultations/schooladmissionconsultation/>
  2. E-mail at [school.admissions@stockton.gov.uk](mailto:school.admissions@stockton.gov.uk)
  3. Consultation events, 3 in January, 4 additional sessions arranged for February

# Eggescliffe School zone

## Admission zone arrangements for secondary schools in the South of the Borough - Eggescliffe School

Published Admission Number – 235 places

Admission zone map:

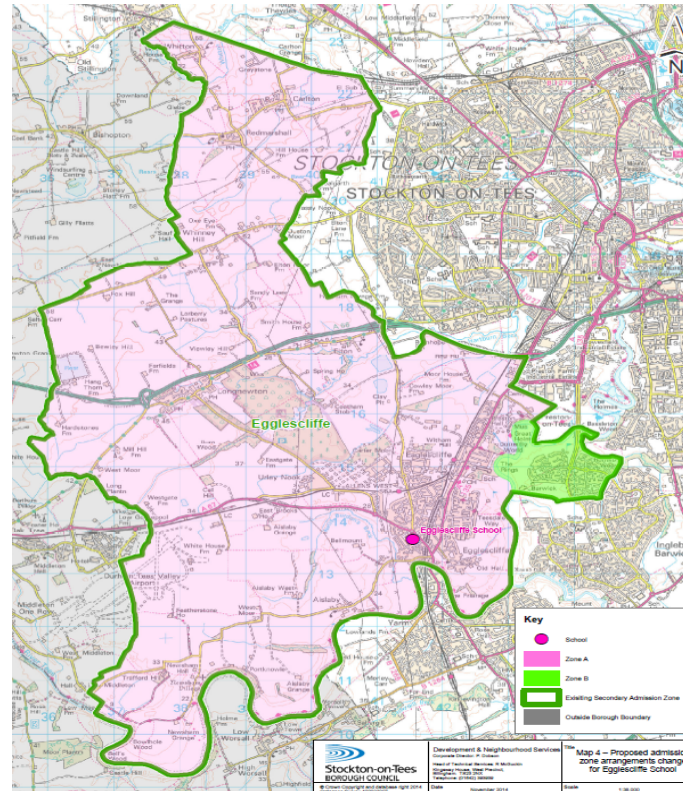


# Rationale for proposed change

- Eggescliffe School oversubscribed with in zone residents for September 2014
- Children residing at the periphery of the admissions zone in rural communities were 'disadvantaged' due to distance (as the crow flies)
- 120 additional places available to Ingleby Barwick residents due to the opening of Ingleby Manor Free School & Sixth Form (Approved by Secretary of State in April 2014)



# Proposed change



# Allocating places September 2016

## **First - across all applications**

- Those with a Statement of SEN / Education, Health & Care Plan, then:
- Criteria 1 – Looked After Children including previously adopted
- Criteria 2 - Complex Needs
- Criteria 3 - Sibling (both in zone children and out of zone)

## **Then - In zone applications from 'Zone A'**

- Criteria 4a – Medical & Social
- Criteria 4b – Distance measured in a straight line 'as the crow flies'

## **Then - In zone applications from 'Zone B'**

- Criteria 4a – Medical & Social
- Criteria 4b – Distance measured in a straight line 'as the crow flies'

## **Then finally – any remaining applications (out of zone)**

- Criteria 5 – Medical & Social
- Criteria 6 – Distance measured in a straight line 'as the crow flies'

# Allocating places September 2016 – How does it differ?

- Criteria is applied across the whole zone until Criteria 4, which is then applied to Zone A followed by Zone B

# Statistics

|  |            |
|--|------------|
| Number of places available in Yarm, Eaglescliffe & Ingleby Barwick   | 719        |
| Number of Year 5 children across Yarm, Eaglescliffe & Ingleby Barwick – eligible for a secondary place in September 2016 | 561        |
| <i>Difference – available places (will include out of zone siblings and SEN)</i>   | <b>158</b> |
|  |            |
| Eligible cohort 2014   | 233        |
| Total applied both in zone and those out of zone with siblings   | 260        |
| Number of in zone applicants not obtaining a place – Zone A  | 18         |
| Number of in zone applicants not obtaining a place – Zone B  | 7          |
| Total not obtaining a place  | 25         |

# Statistics

|  |          |
|--|----------|
| Number of in zone children for 2015  | 240      |
|  |          |
|  |          |
| Number of people (Zone B) putting Egglecliffe as 1 <sup>st</sup> preference                                      | 40 (42%) |
| Number of people (Zone B) putting Egglecliffe as 1 <sup>st</sup> , 2 <sup>nd</sup> or 3 <sup>rd</sup> preference | 83 (87%) |
| Number of people (Zone B) <b>NOT</b> putting Egglecliffe as a preference   | 12 (13%) |
|  |          |

# Statistics

|   |            |
|---|------------|
| Eligible cohort for Zone A for 2016   | 137        |
| Eligible cohort for Zone B for 2016   | 111        |
| <b>Total</b>  | <b>248</b> |
|   |            |
| Out of zone siblings eligible for a place                                     | 15         |
| Estimate SEN/LAC based on 2014 admissions                                     | 7          |
| Total potential applications if all choose Egglecliffe School for 2016        | <b>270</b> |
| <i>Difference against Published Admissions Number of 235</i>                  | +35        |
| Assume 13% of Zone B applicants (111) do not preference Egglecliffe (as 2015) | - 14       |
| <b>Balance</b>  | <b>21</b>  |

# Questions?



Stockton-on-Tees  
BOROUGH COUNCIL

Children and Young People

Big plans for the young people of our Borough

# Next steps

- Compilation and analysis of responses to consultation
- Report to Children & Young Peoples Scrutiny at completion of consultation
- Report to Cabinet for decision – March 2015
- Arrangements available on Council website - 1<sup>st</sup> May
- Guidance booklet produced and available - September 2015



# What parents/carers need to do

- Respond to the consultation giving their views before Saturday 28<sup>th</sup> February.