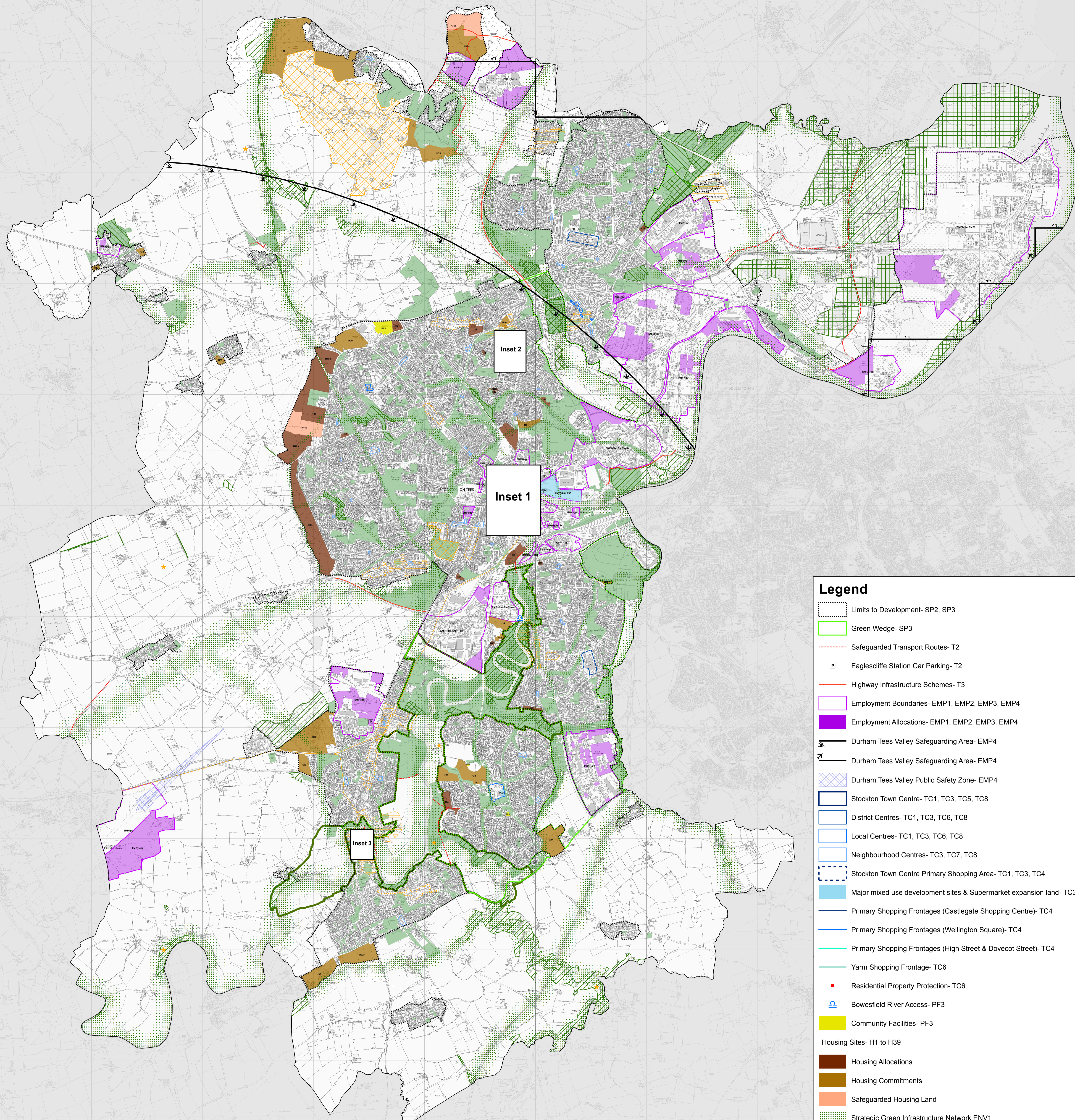
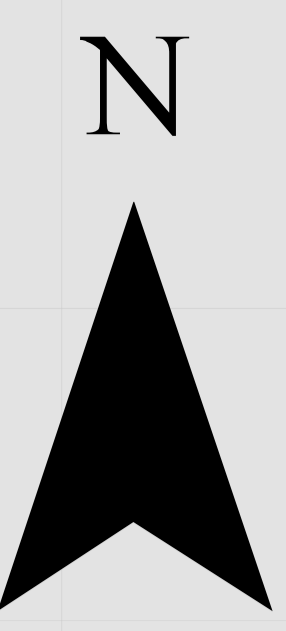


# Regeneration and Environment Local Plan Publication Policies Map February 2015



- Legend**
- Limits to Development- SP2, SP3
  - Green Wedge- SP3
  - Safeguarded Transport Routes- T2
  - Eaglescliffe Station Car Parking- T2
  - Highway Infrastructure Schemes- T3
  - Employment Boundaries- EMP1, EMP2, EMP3, EMP4
  - Employment Allocations- EMP1, EMP2, EMP3, EMP4
  - Durham Tees Valley Safeguarding Area- EMP4
  - Durham Tees Valley Safeguarding Area- EMP4
  - Durham Tees Valley Public Safety Zone- EMP4
  - Stockton Town Centre- TC1, TC3, TC5, TC8
  - District Centres- TC1, TC3, TC6, TC8
  - Local Centres- TC1, TC3, TC6, TC8
  - Neighbourhood Centres- TC3, TC7, TC8
  - Stockton Town Centre Primary Shopping Area- TC1, TC3, TC4
  - Major mixed use development sites & Supermarket expansion land- TC3
  - Primary Shopping Frontages (Castlegate Shopping Centre)- TC4
  - Primary Shopping Frontages (Wellington Square)- TC4
  - Primary Shopping Frontages (High Street & Dovecot Street)- TC4
  - Yarm Shopping Frontage- TC6
  - Residential Property Protection- TC6
  - Bowesfield River Access- PF3
  - Community Facilities- PF3
  - Housing Sites- H1 to H39**
  - Housing Allocations
  - Housing Commitments
  - Safeguarded Housing Land
  - Strategic Green Infrastructure Network ENV1
  - Urban Open Space- ENV1
  - Internationally Designated Sites (SPA and Ramsar)- ENV2
  - Nationally Designated Sites (Sites of Special Scientific Interest)- ENV2
  - Locally Designated Sites (Local Nature Reserves)- ENV2
  - Locally Designated Sites (Local Wildlife Sites)- ENV2
  - Tees Heritage Park- ENV3
  - Scheduled Monuments- HE2
  - Registered Parks and Gardens- HE2
  - Conservation Areas- HE2
  - Character Areas- HE2 & HE3
  - Stockton to Darlington Railway- HE2 & HE5

