

## CABINET ITEM COVERING SHEET PROFORMA

**AGENDA ITEM**

**REPORT TO CABINET**

**11 FEBRUARY 2010**

**REPORT OF CORPORATE  
MANAGEMENT TEAM**

### **CABINET DECISION/KEY DECISION**

Children and Young People – Lead Cabinet Member – Councillor A Cunningham

#### **BUILDING SCHOOLS FOR THE FUTURE (BSF) REVIEW OF OPTIONS FOR THE SOUTH OF THE BOROUGH**

1. Summary

On 3 September 2009 Cabinet asked for a review of possible options for BSF for the three schools in the South of the Borough: All Saints Church of England School in Ingleby Barwick, Conyers School in Yarm and Egglecliffe School in Eaglescliffe.

No capital funding for these schools has been included in the first wave of BSF funding, and government has given no indication of the likely timing of a second wave of BSF investment in the borough. This means that the Council could not commit at this stage to delivering any of the options considered in this report. However Members are asked to authorise further deliverability studies of options prior to community consultation so that the Council will be ready to proceed with an agreed strategy should a second wave of BSF funding be announced.

If it were possible to identify a deliverable alternative option to that already agreed in SFC2, and should a subsequent wave of BSF funding be announced, it is highly unlikely that any development work would take place before the completion of the current wave which is scheduled for 2016. This report therefore explores possibilities with a view to informing further work.

2. Recommendations

- 1) Cabinet to decide which of the options detailed in this report should be investigated further.
- 2) Subject to the completion of those investigations, a further report be brought to Cabinet outlining the results of this additional work for consideration prior to informing an extensive programme of public consultation.
- 3) Site survey and investigations to be funded from balances.

3. Reasons for the Recommendations/Decision(s)

Ingleby Barwick currently has one secondary school with 600 places to serve an area with a resident school population of around 1,300 (aged 11-16, not including Catholic students). Some 700 students resident in Ingleby Barwick currently attend secondary schools in Eaglescliffe and Yarm. The Council is committed to exploring whether there are options other than those proposed in SFC2 that would better meet parental demand for school places in the South of the Borough. A petition has been received advising the Council of the petitioners' intention to provide another secondary school in or on the periphery of Ingleby Barwick.

#### 4. Members' Interests

Members (including co-opted Members with voting rights) should consider whether they have a personal interest in the item as defined in the Council's code of conduct (**paragraph 8**) and, if so, declare the existence and nature of that interest in accordance with paragraph 9 of the code.

Where a Member regards him/herself as having a personal interest in the item, he/she must then consider whether that interest is one which a member of the public, with knowledge of the relevant facts, would reasonably regard as so significant that it is likely to prejudice the Member's judgement of the public interest (**paragraphs 10 and 11 of the code of conduct**).

A Member with a prejudicial interest in any matter must withdraw from the room where the meeting considering the business is being held -

- in a case where the Member is attending a meeting (including a meeting of a select committee) but only for the purpose of making representations, answering questions or giving evidence, provided the public are also allowed to attend the meeting for the same purpose whether under statutory right or otherwise, immediately after making representations, answering questions or giving evidence as the case may be;
- in any other case, whenever it becomes apparent that the business is being considered at the meeting;

and must not exercise executive functions in relation to the matter and not seek improperly to influence the decision about the matter (**paragraph 12 of the Code**).

Further to the above, it should be noted that any Member attending a meeting of Cabinet, Select Committee etc; whether or not they are a Member of the Cabinet or Select Committee concerned, must declare any personal interest which they have in the business being considered at the meeting (unless the interest arises solely from the Member's membership of, or position of control or management on any other body to which the Member was appointed or nominated by the Council, or on any other body exercising functions of a public nature, when the interest only needs to be declared if and when the Member speaks on the matter), and if their interest is prejudicial, they must also leave the meeting room, subject to and in accordance with the provisions referred to above.

**CABINET DECISION/KEY DECISION**

**BUILDING SCHOOLS FOR THE FUTURE (BSF):  
REVIEW OF OPTIONS FOR THE SOUTH OF THE BOROUGH**

**SUMMARY**

On 3 September 2009 Cabinet asked for a review of possible options for BSF for the three schools in the South of the Borough: All Saints Church of England School in Ingleby Barwick, Conyers School in Yarm and Eggescliffe School in Eggescliffe.

No capital funding for these schools has been included in the first wave of BSF funding, and government has given no indication of the likely timing of a second wave of BSF investment in the borough. This means that the Council could not commit at this stage to delivering any of the options considered in this report. However Members are asked to authorise further deliverability studies of options prior to community consultation so that the Council will be ready to proceed with an agreed strategy should a second wave of BSF funding be announced.

If it were possible to identify a deliverable alternative option to that already agreed in SFC2, and should a subsequent wave of BSF funding be announced, it is highly unlikely that any development work would take place before the completion of the current wave which is scheduled for 2016. This report therefore explores possibilities with a view to informing further work.

**RECOMMENDATIONS**

1. Cabinet to decide which of the options detailed in this report should be investigated further.
2. Subject to the completion of those investigations, a further report be brought to Cabinet outlining the results of this additional work for consideration prior to informing an extensive programme of public consultation.
3. Site survey and investigations to be funded from balances.

**DETAIL**

1. The Council's BSF strategy is informed by projections of future student numbers supplied by the Tees Valley Joint Strategy Unit (JSU). Projections suggest that a total of 2,850 secondary school places (11-16) will be needed across Eggescliffe, Ingleby Barwick and Yarm in 2018. All the options considered in this report are based on that projection. This is also the number of school places for the South of the Borough agreed with government agencies in the context of the overall BSF programme.
2. The following table shows the numbers of students of secondary age (11-16) resident in each South of the Borough area in January 2009 and which school they attended. Reading along the first row, for example, shows which schools were attended by the 745 students who lived in Eggescliffe. The majority of those (675) attended Eggescliffe School. Reading down the Eggescliffe School column we can see that 180 students

attending the school lived in Ingleby Barwick. Only a small number of Yarm residents (which for this table includes the Western Parishes) attended Eggescliffe School, and even fewer residents of Eggescliffe went to Conyers School. Students resident in Thornaby are identified in the table because a significant number of Thornaby residents currently attend these schools. None of these figures include students attending Catholic schools. Sufficient places for Catholic students resident in the South of the Borough will continue to be available at St Patrick's RC Comprehensive School in Thornaby.

School → Area of residence ↓	All Saints	Conyers	Eggescliffe	Other schools	Total residents
Eggescliffe	0	11	675	59	<b>745</b>
Ingleby Barwick	568	536	180	30	<b>1314</b>
Thornaby	16	77	40	639	<b>772</b>
Yarm	2	431	37	10	<b>480</b>
Other areas	18	55	230		
<b>Total on roll</b>	<b>604</b>	<b>1110</b>	<b>1162</b>		

3. There is a difference between the number of resident students and the number of school places available in each area. Ingleby Barwick has 1,314 students and 600 school places. Eggescliffe has 745 residents and 1175 school places. Yarm has 1120 school places for 480 residents. Continuing population growth in Ingleby Barwick is likely to increase this difference over the coming years. The aim of this review is to identify and explore the deliverability of any options that might more closely match the supply of school places to residents in each community.
4. On 3 September Cabinet asked for feasibility studies on four options:
  - A: The current preferred option set out in the BSF Strategy for Change agreed by Cabinet and approved by government.
  - B: To create a second school in Ingleby Barwick.
  - C: To increase the capacity of All Saints School beyond 900 places.
  - D: To relocate Eggescliffe School to a site within Preston Park.
5. Cabinet also asked that any other site options that might emerge during the study should be investigated. All the sites examined by the BSF Team, including those suggested by Members, are listed in the table below and shown on the map at **Appendix 1**.

Site	Description
1	Conyers School existing site at Green Lane, Yarm
2	Eggescliffe School existing site at Uray Nook Road, Eggescliffe
3	All Saints Church of England School existing site at Blair Avenue, Ingleby Barwick
4	Land to the west of Ingleby Mill Primary School, Low Lane, Ingleby Barwick
5	Land at Little Maltby Farm, Low Lane, Ingleby Barwick
6	Land south of the TIBS playing fields at Thornaby Road
7	Land north of Blair Avenue, Ingleby Barwick (shown on the map as 7a, 7b, and 7c)
8	Land south of Sunningdale Drive, Eggescliffe
9	Eggescliffe School playing field site at Allens West
10	Land to the rear of Durham Lane, Eggescliffe
11	Land within and adjacent to Preston Park, Eggescliffe
12	Land at Preston Farm, Eggescliffe
13	Land near Queen Elizabeth Way
14	Land between A67 and Uray Nook, Eggescliffe
15	Land north of Allens West rail crossing, Eggescliffe
16	Land to rear of the former Logistics Centre, Eggescliffe

6. The four original options listed in paragraph 4 above have been sub-divided into variants to include the additional possible sites, as indicated in the table below and shown at Appendix 2.

<b>Option</b>	<b>School</b>	<b>Places</b>	<b>Location</b>
<b>A1</b>	All Saints	900	Site 3 - Present school site
	Conyers	900+200	Site 1 - Present school site
	Egglescliffe	1,050+250	Site 9 - Allens West site
<b>A2</b>	All Saints	900	Site 3 - Present school site
	Conyers	900+200	Site 1 - Present school site
	Egglescliffe	1,050+250	Site 2 - Present school site
<b>B1</b>	All Saints	900	Site 3 - Present school site
	Conyers	900+200	Site 4, 5, 6 or 7 in Ingleby Barwick
	Egglescliffe	1,050+250	Site 2 or 9 - Present site or Allens West
<b>B2</b>	All Saints	900	Site 3 - Present school site
	Conyers	900+200	Site 4, 5, 6 or 7 in Ingleby Barwick
	Egglescliffe	1,050+250	Site 1 - Conyers School site
<b>C1</b>	All Saints	1,050	Site 3 - Present site + Site 7a, b or c
	Conyers	900+200	Site 1 - Present school site
	Egglescliffe	900+250	Site 2 or 9 - Present site or Allens West
<b>C2</b>	All Saints	1,200	Site 3 - Present site + Site 7a, b or c
	Conyers	750+200	Site 1 - Present school site
	Egglescliffe	900+250	Site 2 or 9 - Present site or Allens West
<b>D1</b>	All Saints	900	Site 3 - Present school site
	Conyers	900+200	Site 1 - Present school site
	Egglescliffe	1,050+250	Site 8, 10, 14, 15 or 16
<b>D2</b>	All Saints	900	Site 3 - Present school site
	Conyers	900+200	Site 1 - Present school site
	Egglescliffe	1,050+250	Sites 11a+11b, 12 or 13

Method of feasibility studies:

7. Desktop studies included preliminary title searches, size assessments, exploration of potential cost and consultation with highways engineers and planning officers. The estimated area of each site from the GIS system was used to determine its student capacity in accordance with the guidance published in DCSF Building Bulletin BB98 (Area Guidelines for Secondary Schools) and the statutory requirements of the Education (School Premises) Regulations 1999. Sites 4, 8 and 13 were rejected at that stage as it was ascertained that they were too small to accommodate the desired number of students. Meetings were held with planners and highway engineers to identify any planning or access issues.
8. Other considerations in the assessment of each option were:
- Whether that option would result in all schools in the South of the Borough area being of viable size
  - Whether that option would maintain a secondary school in each geographical community (Eaglescliffe, Ingleby Barwick and Yarm)
  - To what extent the number of school places in each geographical area would match the number of resident students
  - The impact on the distances travelled and the number of students required to travel to schools outside their own area
  - The impact on post-16 education provision
  - Whether any additional land (not currently in Council ownership) would be required
  - An assessment of the likely availability of such land
  - The likely impact on the existing long-term PFI contract for the maintenance of the site and buildings of All Saints Church of England School
  - Any planning and/or highways issues

- The likely development cost (excluding costs funded through BSF).
9. Further detailed investigation, including technical, financial, educational, environmental and legal aspects will be covered in the deliverability option phase.

### Options A1 (the current preferred option) and A2

10. Both variants include enlarging All Saints to 900 places and refurbishing Conyers for 900 plus sixth form. Option A1 also includes the original proposal to rebuild Egglecliffe School on its playing fields site at Allens West. Option A2 is to rebuild the school on the present Egglecliffe School site. This would be a difficult operation due to the congested nature of the site and the consequent disruption to education, but until detailed surveys have been undertaken it has not been ruled out as a possible option. Some playing field land at Allens West would continue to be needed. Other potential sites for Egglecliffe School are discussed in paragraphs 45-61 of this report.

School	Present 11-16 capacity	Capacity after BSF
Conyers	1120	900
Egglecliffe	1175	1050
All Saints	600	900
<b>TOTALS</b>	<b>2895</b>	<b>2850</b>

#### Factors in support of option A1 and A2:

11. All three schools would be of viable size and able to offer a broad range of curriculum options.
12. Each of the three geographical areas would retain a school within its community.
13. The three most successful and popular schools in the borough would be retained.
14. There would be no requirement for the Council to find resources to buy any new sites (land purchase cannot be funded through BSF).
15. This option retains an element of choice. There is evidence that some parents in Ingleby Barwick choose to send their children to Egglecliffe and Conyers. Of the 297 Ingleby Barwick students who applied for places to start at secondary schools in September 2009 only five did not get a place at the school they named as their first preference on the application form. Similarly, 36 places at All Saints are taken by young people who live outside of Ingleby Barwick.

#### Factors against option A1 and option A2:

16. At present more than 700 students travel every day from Ingleby Barwick to schools in Yarm and Egglecliffe (536 to Conyers School and 180 to Egglecliffe). The proposed increase of 300 places in the capacity of All Saints School would still leave more than 400 students continuing to travel.
17. The Council provides a safe and efficient bus service for these students, but bus timetables are tied to the start and end of the formal school day. This makes it more difficult for those students to participate in extended school activity at their own school outside those hours.
18. The current preferred site for a rebuilt Egglecliffe (at Allen's West – site 9 on the map) lies below a line of high-voltage power cables. Some people have raised concerns claiming potential health risks linked to the building of homes or schools in close proximity to such power lines.

19. Egglecliffe School requires a complete rebuild. Delivering this on its existing site would potentially cause disruption to students and staff, as the work would need to proceed around them.

**Option B: create a second school in Ingleby Barwick**

20. A second school in Ingleby Barwick could not be an additional school because the overall need for 2,850 places in the South of the Borough does not justify four secondary schools. Opening a second school in Ingleby Barwick would therefore involve either closing Conyers or Egglecliffe to create a new school in Ingleby Barwick, or relocating one of those two schools to Ingleby Barwick. There are no educational grounds for closure, which makes relocation the only feasible alternative to this model.
21. Option B is therefore based on a proposal to transfer Conyers School to a site in Ingleby Barwick. Conyers has been suggested because that school currently takes the greater number of students from Ingleby Barwick. This reflects a suggestion raised in the Cabinet paper dated 5<sup>th</sup> February 2009.
22. Two variants of option B have been considered. Both variants involve transferring Conyers to a site in Ingleby Barwick. Sites 4, 5, 6 and 7 on the map have been considered. Option B2 would also transfer Egglecliffe School to the vacated Conyers site.

School	Present 11-16 capacity	Options B1 and B2
Conyers	1120	900
Egglecliffe	1175	1050
All Saints	600	900
<b>TOTALS</b>	<b>2895</b>	<b>2850</b>

23. Conyers School relocated to Ingleby Barwick with 900 11-16 places (plus its sixth form) would have more than sufficient places to accommodate the Conyers and Egglecliffe students who live in Ingleby Barwick, with some spare capacity to cope with future growth. This could release around 200 places at Egglecliffe for Conyers students who do not live in Ingleby Barwick. The remaining Conyers students who do not live in Ingleby Barwick would have to travel to the new site.
24. Both variants of this option would require the purchase of a new site of approximately 7 hectares.

Site	Title	Size	Comments
4	Private	Too small	This site has been eliminated from further consideration.
5	Private	Sufficient size	Safe access could be achieved from Barwick Way. Designated green wedge. This does not prohibit development but the Planning Authority would need to be convinced about the nature of the development as per Ingleby Mill Primary School in 2004-05.
6	Private	Sufficient size	Outside Ingleby Barwick. Poor accessibility There are concerns over highway access.
7a/7b/ 7c	Private – believed to be separate owners	All three together of sufficient size.	Individual sites large enough for consideration in options C1 and C2 (as additional playing fields for an enlarged All Saints). All three sites have outline planning permission for residential development and would therefore attract residential value housing development and would be costly to buy.

25. Given the factors set out in the table above, the assessment of this option is based on site 5.

Factors in support of this option:

26. Ingleby Barwick would have sufficient school places for all resident students. All Ingleby residents would have the option to attend a school within their immediate community.
27. All three schools would be of viable size and able to offer a broad range of curriculum options.

Factors against this option:

28. The community of Yarm (option B1) or Egglecliffe (B2) would be left without a secondary school. Clearly this would be a sensitive local issue which would give rise to strong feeling.
29. This option would continue the model of a high number of students travelling out of their own community to school. When a school moves to a new site, all its students normally move with it. Some Conyers students resident in Yarm might be content to travel to Ingleby Barwick. Others might prefer Egglecliffe, but that school rarely has vacant places and could not accommodate all the Conyers students who do not live in Ingleby Barwick. A revision of school admission zones would be necessary. Full community consultation would be essential but without any clarity on funding it would be difficult to carry out in a meaningful way: parents cannot be asked to change existing patterns of school preference while the timescale for BSF funding remains uncertain, but when it is confirmed it might be too late for students already attending the schools.
30. Transferring a school with more than a thousand students to a new site is difficult to achieve without disruption to education. At whatever time the move took place, some students would be preparing for national examinations. Option B2 would risk disruption for more than 2,000 students.
31. Conyers School has several buildings of recent construction that need only refurbishment. Replacing them with a new-build school elsewhere would not be best value for money.
32. There is no certainty that site 5 is available for sale at a price the Council could afford to pay. Neither the cost of site 5 nor the value of any potential land sale has yet been established.
33. Site 5 is designated green wedge, and any development would be subject to robust negotiation with the planning authority.
34. If site 5 was available and funding was identified to buy it, the Council could not make a decision to transfer Conyers to a site in Ingleby Barwick without full statutory consultation.

**Option C: increase the capacity of All Saints School beyond 900 places**

35. Two variants of this option have been considered. Option C1 increases the capacity of All Saints to 1,050 places, and reduces that of Egglecliffe and Conyers to 900 each. Option C2 would increase All Saints to 1,200, with Conyers reduced to 750, and Egglecliffe to 900. Both variants would require the purchase of some additional land for off-site playing fields for All Saints.

School	Present 11-16 capacity	Option C1
Conyers	1120	900
Egglecliffe	1175	900



All Saints	600	1050
<b>TOTALS</b>	<b>2895</b>	<b>2850</b>

<b>School</b>	<b>Present 11-16 capacity</b>	<b>Option C2</b>
Conyers	1120	750
Egglescliffe	1175	900
All Saints	600	1200
<b>TOTALS</b>	<b>2895</b>	<b>2850</b>

Factors in support of this option:

36. Ingleby Barwick would have sufficient school places for 70% (C1) or 80% (C2) of resident students.
37. A school would be retained in each geographical area.
38. All three schools would be of viable size and able to offer a broad range of curriculum options.

Factors against this option:

39. The Council does not own any land in Ingleby Barwick suitable for use as off-site playing fields for All Saints School. Potential sites, all in private ownership and of uncertain availability, are shown as 7a, 7b and 7c on the map. Any one of these would be of sufficient size. All three sites are earmarked for housing development and would be costly to buy.
40. The maintenance of such a site, were it to be found, would need to be included in an amendment to the existing PFI facilities management contract and would involve further cost for the school.
41. Conyers School could experience significant staffing and curriculum issues in reducing its 11-16 student numbers by 370 (option C2). It would be difficult for such a small school to retain a viable sixth form.
42. Neither variant of this option would be able to accommodate all Ingleby Barwick residents. Some students would still need to travel to school. The numbers involved would be in the region of 450 (Option C1) or 300 (C2).
43. The Office of the Schools Commissioner (OSC) indicated (April 2008) that a proposal to reduce Egglescliffe to 1050 places would be acceptable, but OSC "would prefer no reduction at Egglescliffe as it is an improving, successful and popular school, however we understand the constraints of the new site size and the need to reduce the number of places overall". It is highly unlikely that OSC would approve such significant reductions to both Egglescliffe and Conyers.

**Option D: Relocate Egglescliffe School to another site**

44. Option A1 (the current preferred option) involves a new build Egglescliffe School on the Allen's West site. Eight other site options for Egglescliffe have also been considered. Five of those sites are located within Egglescliffe, the other three sites are closer to Ingleby Barwick. The present site of Egglescliffe School is almost five miles by road from the centre of Ingleby Barwick. At present fewer than 200 students attend Egglescliffe from homes in Ingleby Barwick, but this number could increase as housing development continues in the north-west of Ingleby Barwick.
45. The site in Preston Park mentioned in the 3 September report to Cabinet is one of three potential sites closer to Ingleby Barwick. Egglescliffe School in one of these locations could serve the north of Ingleby Barwick and the north of Egglescliffe; All Saints could serve the remainder of Ingleby Barwick; and Conyers could serve Yarm and the south of

Eaglescliffe. Option D therefore has two variants: D1 looks at potential sites in the Eaglescliffe area, and D2 at those closer to Ingleby Barwick. All sites have been assessed for their potential to accommodate Eggescliffe School with 1,050 students plus sixth form. Site 11, the site within Preston Park, is not of sufficient size to contain a school of more than 750 students. Eggescliffe needs to accommodate 1,050 students, therefore site 11 has been increased to include land adjacent to the Park, which is in Council ownership, and currently used for allotments.

School	Present 11-16 capacity	Option D1, D2
Conyers	1120	900
Eggescliffe	1175	1050
All Saints	600	900
<b>TOTALS</b>	<b>2895</b>	<b>2850</b>

#### Option D1: sites in the Eaglescliffe area

Site	Title	Size	Comments
8	Private	Too small	Availability uncertain Poor access through residential area
10	Private	Sufficient	The site is allocated in the Local Plan for industrial, storage or distribution uses.
14	Private	Sufficient	The land is designated for commercial or industrial use in the Local Plan. Availability uncertain.
15	Private	Sufficient	Already developed with a single large dwelling in the centre. Availability uncertain.
16	Private	Sufficient	Close to an industrial environment and is accessed via a railway level crossing. Availability uncertain.

#### Factors in support of option D1:

46. All three schools would be of viable size and able to offer a broad range of curriculum options.
47. Each of the three geographical areas would retain a school within its community.
48. The three most successful and popular schools in the borough would be retained.

#### Factors against option D1:

49. This option would do nothing to reduce the need for hundreds of students to travel from Ingleby Barwick to schools in other areas.
50. The Council provides a safe and efficient bus service for these students, but bus timetables are tied to the start and end of the formal school day. This makes it more difficult for those students to participate in extended school activity at their own school outside those hours.

#### Option D2: sites closer to Ingleby Barwick

Site	Title	Size	Comments
11a	Council owned	Too small	The site would only be sufficient for a school of 750 places.  Designated green wedge. This does not prohibit development but the Planning Authority would need to be convinced about the nature of the development as per Ingleby Mill Primary School in 2004-05.
11a & 11b	Council owned	Sufficient with the addition of adjacent land currently used	This model would include the land currently used for allotments and would be sufficient for a school of 1,050 places.

		for allotments.	Designated green wedge. This does not prohibit development but the Planning Authority would need to be convinced about the nature of the development as per Ingleby Mill Primary School in 2004-05.
12	Private	Sufficient	Availability uncertain.  Designated green wedge. This does not prohibit development but the Planning Authority would need to be convinced about the nature of the development as per Ingleby Mill Primary School in 2004-05.
13	Private	Too small	Designated in the Local Plan for industrial or commercial use.

Factors in support of option D2:

51. The relocated Eggescliffe and increased size of All Saints would together provide sufficient school places for all Ingleby Barwick resident students.
52. All three schools would be of viable size and able to offer a broad range of curriculum options.
53. Transport of students would be greatly reduced, saving the Council up to £250,000 per annum.
54. Part of the present Eggescliffe School site (the building footprint) and much of its Allens West playing field site could be sold.
55. Preston Park and the land currently used for allotments is in Council ownership and is not subject to any covenants preventing development.
56. Development of a school within the park and allotment site would allow improved use of the park and museum as education resources and could contribute significantly to realising aspects of the Park Masterplan (e.g. improved community leisure facilities, parking and road layout, visual amenity).

Factors against option D2:

57. A recent petition has shown the strength of feeling and public opposition that would exist if site 11 were selected.
58. Site 11a is not of sufficient size for Eggescliffe School. It would be necessary to incorporate into the school site the land currently used for the Preston Park allotments. The allotments would therefore need to be re-provided at another site. Any investigation of site 11b as a potential school site would need to include an examination of possible new sites for the allotments. This would involve a lengthy and complex process of consultation and negotiation with the allotment holders' association. The proposal would be contrary to several existing and emerging planning policy documents.
59. None of these sites could be accessible from Ingleby Barwick on foot or by cycle without provision of a footbridge across the river.
60. This option, like option B, would require the transfer of large numbers of Ingleby Barwick resident students from Conyers to Eggescliffe, and of Yarm-Eggescliffe resident students from Eggescliffe to Conyers. This would not be easy to manage without disruption and could not be achieved without the consent of the families involved. At present the Council cannot offer these communities any certainty over the availability or timing of BSF funding, which would make meaningful consultation very difficult.

## Conclusions

61. Option A1 to relocate Eggescliffe to land at Allan's West has already been agreed by Cabinet and accepted by government in the Strategy for Change submissions. It would be deliverable and would retain a school in each community. Option A2 to rebuild Eggescliffe on its current site is similar, but if achievable would avoid opposition over the Allens West site.
62. Options B1 and B2, to transfer Conyers School to the Little Maltby Farm site in Ingleby Barwick, would require the purchase of a large site. These options would make Ingleby Barwick self-sufficient in secondary school places but would leave Yarm without a school of its own. Some student travel would be reduced in the long term, but at the cost of considerable disruption in the short term. Conyers students not resident in Ingleby Barwick would need to travel to a re-located school. These options may not be affordable overall due to the need for two new-build schools, Eggescliffe and a relocated Conyers. Option B2 would see a new build Conyers on the Little Maltby Farm site but would also move Eggescliffe to the vacated Conyers site. Affordability issues would be reduced, but disruption would be significantly increased, as would travelling. All Eggescliffe students would have to travel to the old Conyers site in this model.
63. Options C1 and C2, to increase the size of All Saints Church of England School beyond 900 places, would not create sufficient school places within Ingleby Barwick to meet local demand, although it would retain a school in each of the three communities. It would go some way to improve the transport situation, but it is far from certain that the additional land needed for playing fields is available or affordable.
64. Option D1 to locate a new build Eggescliffe in the Eaglescliffe area would require the purchase of a new site, but this might be offset by receipts from the sale of part of the present Eggescliffe site and Allen's West. The site options considered in D1 are of uncertain availability. Option D2 to relocate Eggescliffe to land within and adjacent to Preston Park would make a positive impact on travel but would still leave many Ingleby students travelling beyond walking distance to school. This option would utilise land already in Council ownership. The possibility of capital receipts from the sale of parts of the two Eggescliffe sites could make this the most affordable option. Relocating to site 12 would necessitate land purchase.

## FINANCIAL AND LEGAL IMPLICATIONS

65. Any options identified for further exploration would require negotiations with landowners, technical investigations of potential sites, and detailed discussions with planners. The resources allocated by the Council for managing the local BSF programme are fully committed to developing the projects in the first wave. Any additional work on options will require additional resources. This could be funded from balances.
66. A future wave of BSF funding will be the main source of finance for any development carried out at these schools. That funding will be limited to the amount that the BSF programme drives out from the funding allocation modelling based on projected student numbers. Based on projected pupil numbers it is highly unlikely that the allocation would be sufficient to afford two new build schools.
67. Should any of the options investigated result in the need for the Council to acquire additional land it will be necessary to identify the potential cost of that land and a source of funding through which that land could be acquired.
68. There are no legal implications in the recommendations of this report for further investigations. Legal implications would arise at the point when any of the options were implemented. A further report would be brought to Cabinet at that stage.

## **RISK ASSESSMENT**

69. A comprehensive risk register is maintained for the BSF programme. This report seeks the agreement of Cabinet to carry out feasibility studies only. Existing management systems and daily routine activities are sufficient to control and reduce risk.

## **SUSTAINABLE COMMUNITY STRATEGY IMPLICATIONS**

### **Economic Regeneration and Transport**

70. The proposed feasibility studies would include a full assessment of the transport implications of each option.

### **Safer Communities**

71. No negative implications.

### **Children and Young People**

72. The BSF programme is intended to improve services for children and young people.

### **Health and Wellbeing**

73. No negative implications.

### **Environment and Housing**

74. No negative implications of this work.

## **CORPORATE PARENTING**

75. The Council's BSF strategy includes targets to raise educational achievement and improve life chances for all children and young people in the borough including those looked after by the Authority.

## **EQUALITY IMPACT ASSESSMENT**

76. The BSF programme has been subject to an Equality Impact Assessment and has been judged to have a positive impact. Any firm proposal for change that might arise from feasibility studies would be subject to an Equality Impact Assessment at that stage.

## **CONSULTATION INCLUDING WARD/COUNCILLORS**

77. The current preferred option emerged following public consultation on initial options in autumn 2007. That consultation included distribution of a consultation booklet, public meetings, internet questionnaire and meetings of school governing bodies. The preferred option was included in SfC1 and SfC2 documents agreed by Cabinet before submission for government approval. Those documents were subject to further consultation including members' seminars and meetings with ward councillors, and regular meetings with headteachers in the BSF Change Management Group.
78. If Cabinet recommends further work on any of these options, the outcomes will be notified to members and made public via Stockton News, information leaflets and through the Council website. Full public consultation will take place to determine which of the feasible options will be adopted as part of the Council's BSF programme. That consultation will include members' seminars, public meetings in each of the South of the Borough areas, and the distribution of a consultation paper.

**Name of Contact Officer:** Julia Morrison  
**Post Title:** Assistant Director/Head of Children, Schools and Complex Needs  
**Telephone No.** 01642 527041  
**Email Address:** julia.morrison@stockton.gov.uk

Background Papers:

Building Schools for the Future Strategy for Change Part 2

Report to Cabinet dated 5 February 2009

Report to Cabinet dated 3 September 2009

Ward(s) and Ward Councillors:

Eaglescliffe

Ingleby Barwick East

Ingleby Barwick West

Yarm

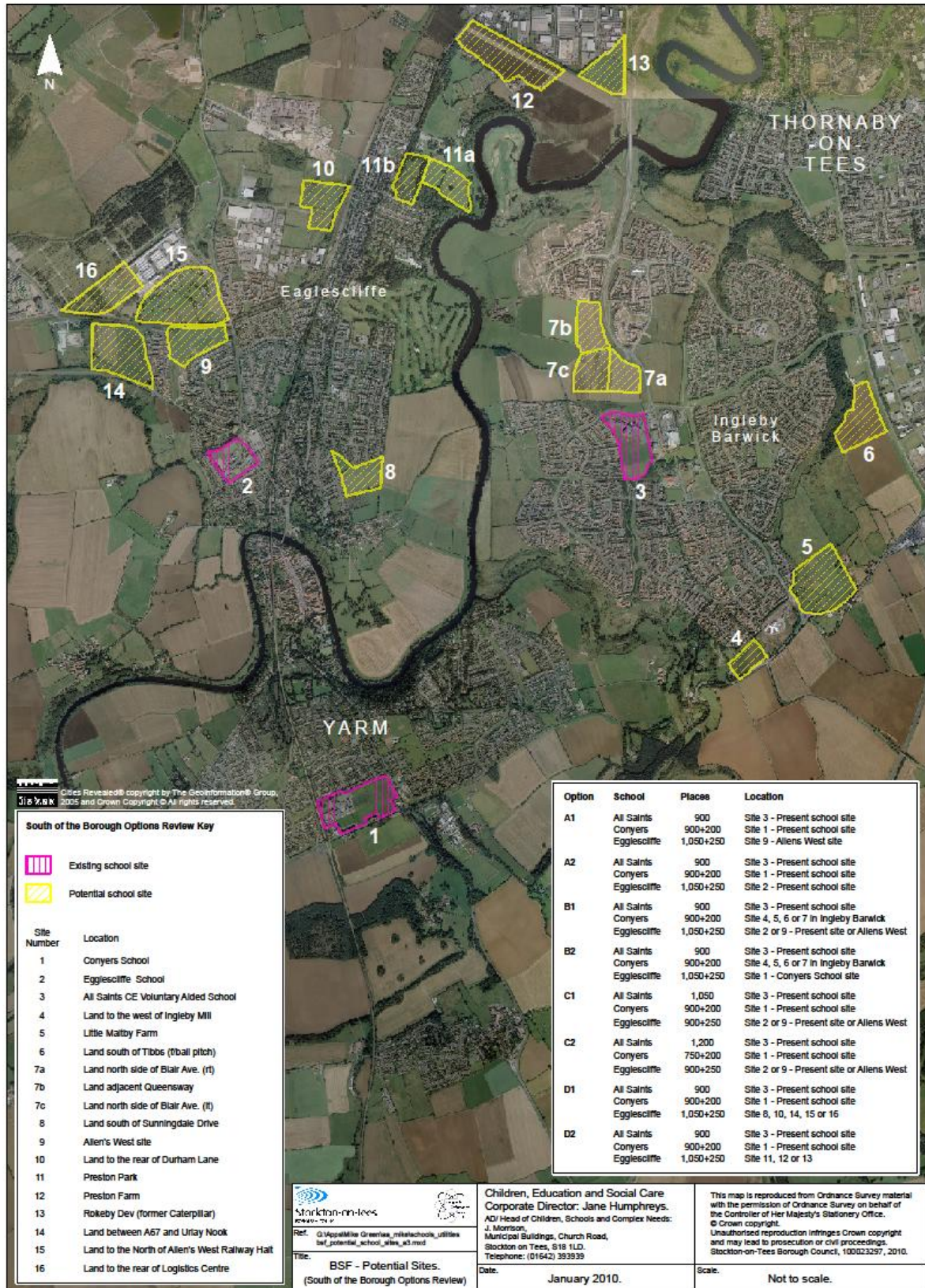
Western Parishes

Property

No implications at this stage



# APPENDIX 1



**South of the Borough Options Review Key**

- Existing school site
- Potential school site

Site Number	Location
1	Conyers School
2	Eggescliffe School
3	All Saints CE Voluntary Aided School
4	Land to the west of Ingleby Mill
5	Little Malby Farm
6	Land south of Tibbs (fball pitch)
7a	Land north side of Blair Ave. (ft)
7b	Land adjacent Queensway
7c	Land north side of Blair Ave. (ft)
8	Land south of Sunningdale Drive
9	Allens West site
10	Land to the rear of Durham Lane
11	Preston Park
12	Preston Farm
13	Rokeby Dev (former Caterpillar)
14	Land between A67 and Uriay Nook
15	Land to the North of Allen's West Railway Halt
16	Land to the rear of Logistics Centre

Option	School	Places	Location
A1	All Saints	900	Site 3 - Present school site
	Conyers	900+200	Site 1 - Present school site
	Eggescliffe	1,050+250	Site 9 - Allens West site
A2	All Saints	900	Site 3 - Present school site
	Conyers	900+200	Site 1 - Present school site
	Eggescliffe	1,050+250	Site 2 - Present school site
B1	All Saints	900	Site 3 - Present school site
	Conyers	900+200	Site 4, 5, 6 or 7 In Ingleby Barwick
	Eggescliffe	1,050+250	Site 2 or 9 - Present site or Allens West
B2	All Saints	900	Site 3 - Present school site
	Conyers	900+200	Site 4, 5, 6 or 7 In Ingleby Barwick
	Eggescliffe	1,050+250	Site 1 - Conyers School site
C1	All Saints	1,050	Site 3 - Present school site
	Conyers	900+200	Site 1 - Present school site
	Eggescliffe	900+250	Site 2 or 9 - Present site or Allens West
C2	All Saints	1,200	Site 3 - Present school site
	Conyers	750+200	Site 1 - Present school site
	Eggescliffe	900+250	Site 2 or 9 - Present site or Allens West
D1	All Saints	900	Site 3 - Present school site
	Conyers	900+200	Site 1 - Present school site
	Eggescliffe	1,050+250	Site 8, 10, 14, 15 or 16
D2	All Saints	900	Site 3 - Present school site
	Conyers	900+200	Site 1 - Present school site
	Eggescliffe	1,050+250	Site 11, 12 or 13



Ref: G:\AppalMile Greenies\_mileteachschs\_utilites  
 ref\_potential\_school\_sites\_a3.mxd  
 Title: **BSF - Potential Sites.**  
 (South of the Borough Options Review)

Children, Education and Social Care  
 Corporate Director: Jane Humphreys.  
 ADI Head of Children, Schools and Complex Needs:  
 J. Morrison,  
 Municipal Buildings, Church Road,  
 Stockton on Tees, S18 1LD.  
 Telephone: (01642) 393939

Date: January 2010.

This map is reproduced from Ordnance Survey material with the permission of Ordnance Survey on behalf of the Controller of Her Majesty's Stationery Office. © Crown copyright.  
 Unauthorised reproduction infringes Crown copyright and may lead to prosecution or civil proceedings.  
 Stockton-on-Tees Borough Council, 100023297, 2010.

Scale: Not to scale.

## APPENDIX 2

<b>Option</b>	<b>School</b>	<b>Places</b>	<b>Location</b>
<b>A1</b>	All Saints	900	Site 3 - Present school site
	Conyers	900+200	Site 1 - Present school site
	Egglescliffe	1,050+250	Site 9 - Allens West site
<b>A2</b>	All Saints	900	Site 3 - Present school site
	Conyers	900+200	Site 1 - Present school site
	Egglescliffe	1,050+250	Site 2 - Present school site
<b>B1</b>	All Saints	600	Site 3 - Present school site
	Conyers	900+200	Site 4, 5, 6 or 7 in Ingleby Barwick
	Egglescliffe	1,350+250	Site 2 or 9 - Present site or Allens West
<b>B2</b>	All Saints	900	Site 3 - Present school site
	Conyers	900+200	Site 4, 5, 6 or 7 in Ingleby Barwick
	Egglescliffe	1,050+250	Site 2 or 9 - Present site or Allens West
<b>B3</b>	All Saints	600	Site 3 - Present school site
	Conyers	900+200	Site 4, 5, 6 or 7 in Ingleby Barwick
	Egglescliffe	1,350+250	Site 1 - Conyers School site
<b>B4</b>	All Saints	900	Site 3 - Present school site
	Conyers	900+200	Site 4, 5, 6 or 7 in Ingleby Barwick
	Egglescliffe	1,050+250	Site 1 - Conyers School site
<b>C1</b>	All Saints	1,050	Site 3 - Present site + Site 7a, b or c
	Conyers	900+200	Site 1 - Present school site
	Egglescliffe	900+250	Site 2 or 9 - Present site or Allens West
<b>C2</b>	All Saints	1,200	Site 3 - Present site + Site 7a, b or c
	Conyers	750+200	Site 1 - Present school site
	Egglescliffe	900+250	Site 2 or 9 - Present site or Allens West
<b>D1</b>	All Saints	900	Site 3 - Present school site
	Conyers	900+200	Site 1 - Present school site
	Egglescliffe	1,050+250	Site 8, 10, 14, 15 or 16
<b>D2</b>	All Saints	900	Site 3 - Present school site
	Conyers	900+200	Site 1 - Present school site
	Egglescliffe	1,050+250	Sites 11a+11b, 12 or 13