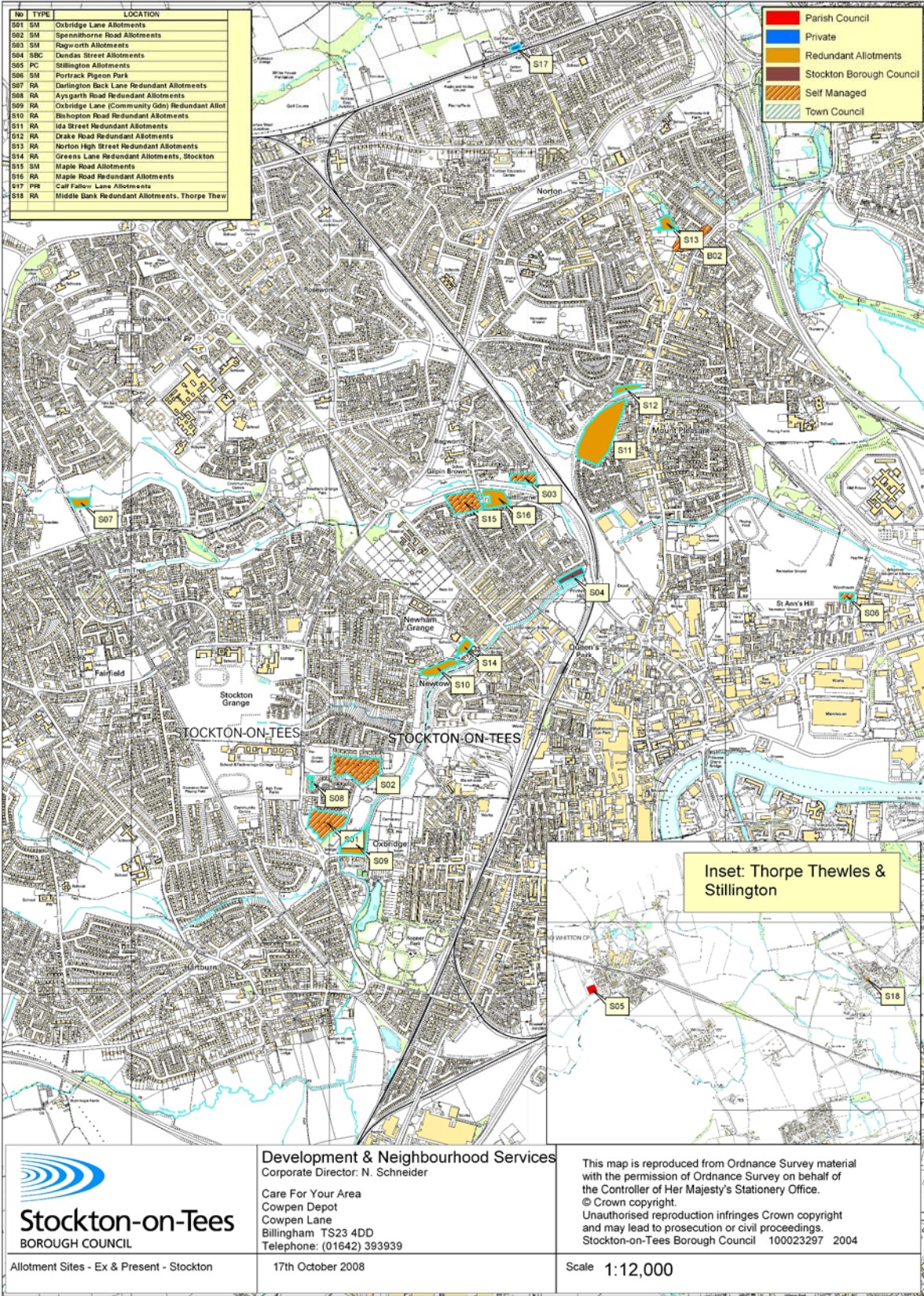
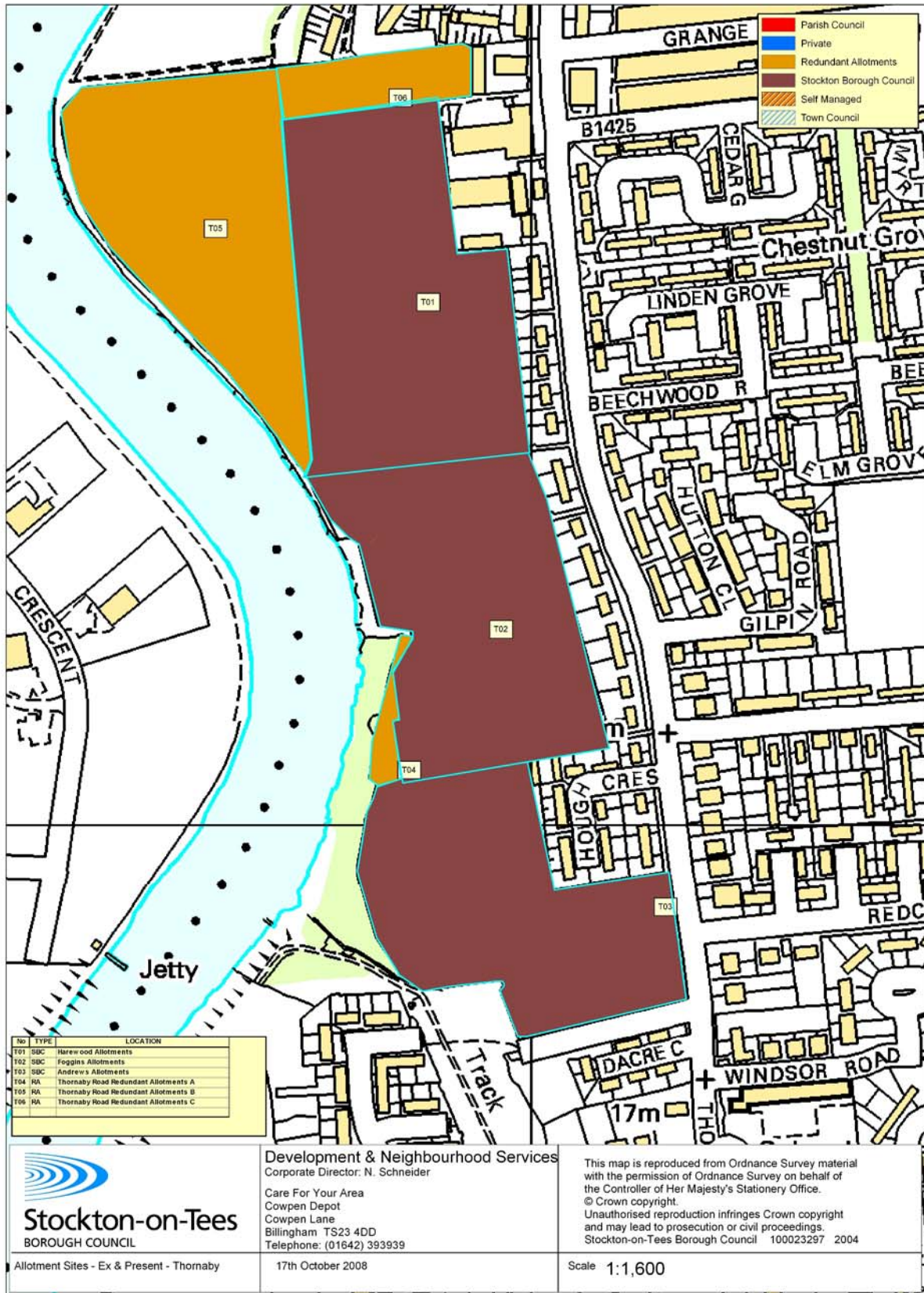


Front Cover for Allotments Review  
Appendix 5







  
**Stockton-on-Tees**  
 BOROUGH COUNCIL

**Development & Neighbourhood Services**  
 Corporate Director: N. Schneider  
 Care For Your Area  
 Cowpen Depot  
 Cowpen Lane  
 Billingham TS23 4DD  
 Telephone: (01642) 393939

This map is reproduced from Ordnance Survey material with the permission of Ordnance Survey on behalf of the Controller of Her Majesty's Stationery Office.  
 © Crown copyright.  
 Unauthorised reproduction infringes Crown copyright and may lead to prosecution or civil proceedings.  
 Stockton-on-Tees Borough Council 100023297 2004

Allotment Sites - Ex & Present - Thornaby

17th October 2008

Scale 1:1,600

