

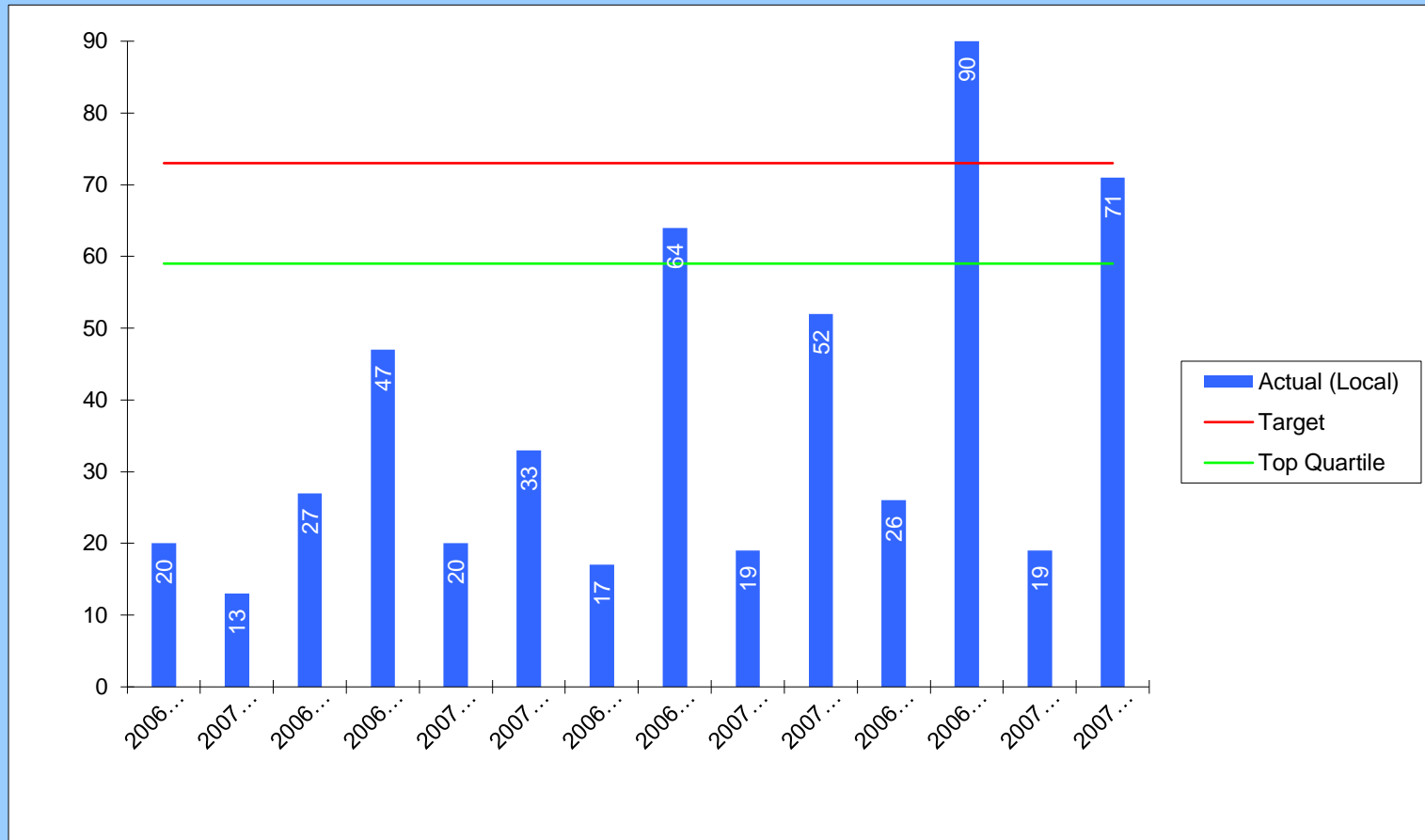


Economic Regeneration and Transport  
Key Performance Indicators

Quarter 4 2007/08

- ★ Achieved Target
- Missed Target
- Within Tolerance
- Quartiles: 1st = Top; 4th = Bottom

ERT001 Number of people killed or seriously injured in road traffic collisions (local performance indicator)  
(BV99a(i) Local)



**Performance Comparisons**

↑

2006/7 Top Quartile 59

2007/8 SBC Target 73

2% Tolerance

Polarity ↓

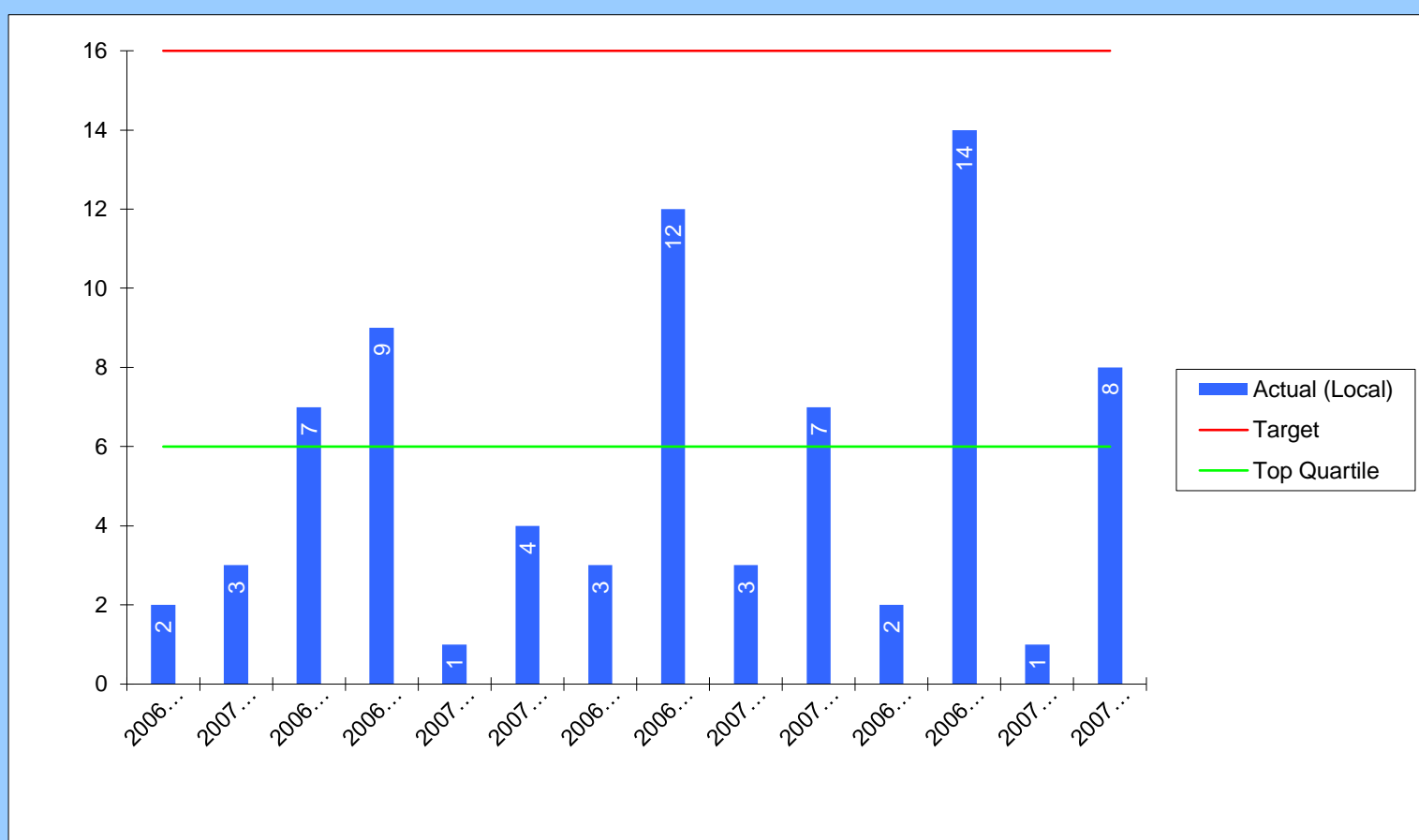
Target

★

Comments: The annual target has been achieved.

Head of Service: Mike Robinson (52)7028

ERT002 Number of children killed or seriously injured in road traffic collisions (local performance indicator)  
(BV99b(i) Local)



**Performance Comparisons**

↑

2006/7 Top Quartile 6

2007/8 SBC Target 16

2% Tolerance

Polarity ↓

Target

★

Comments: The annual target has been achieved.

Head of Service: Mike Robinson (52)7028

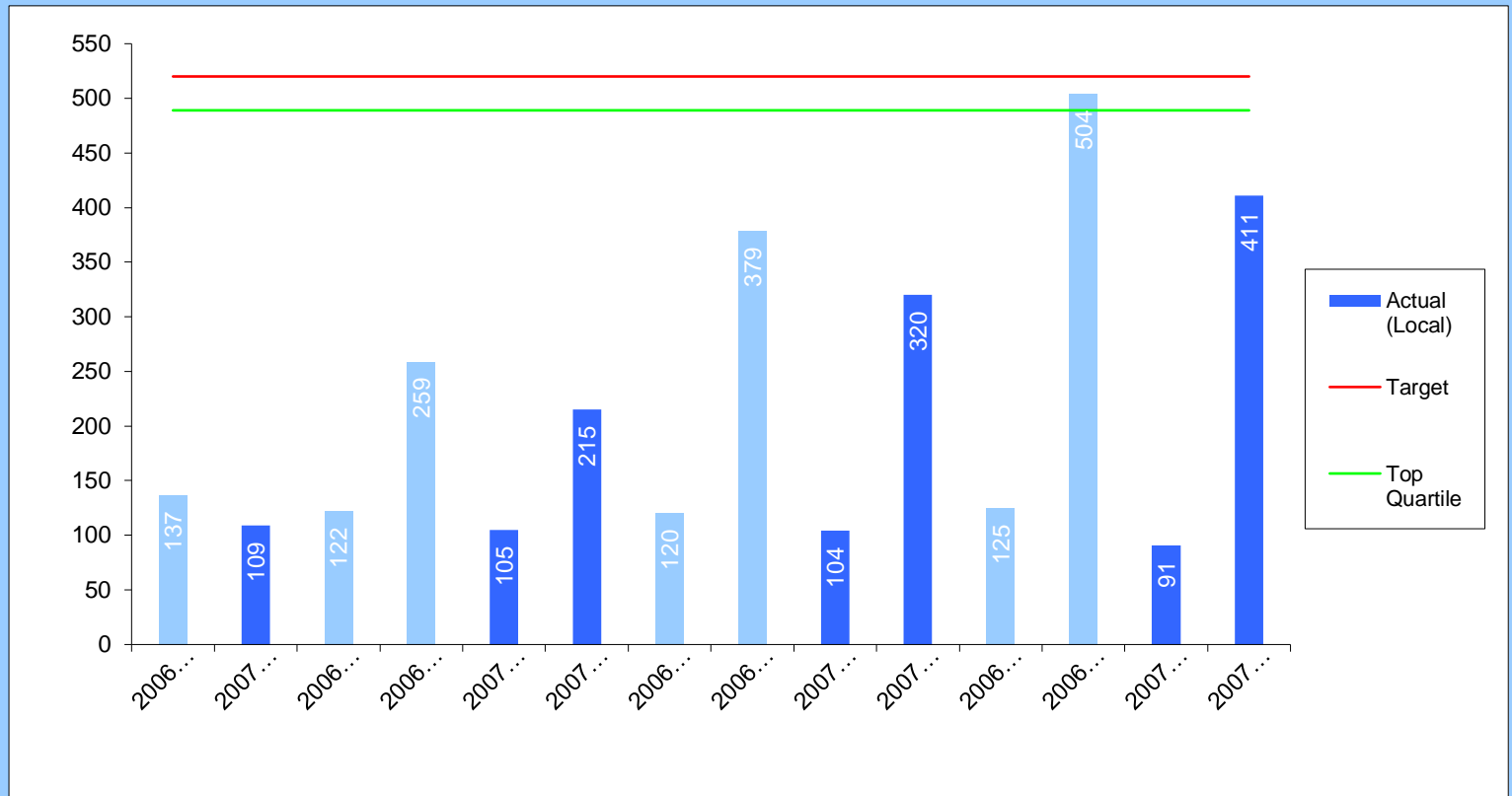


Economic Regeneration and Transport  
Key Performance Indicators

Quarter 4 2007/08

- ★ Achieved Target
- Missed Target
- Within Tolerance
- Quartiles: 1st = Top; 4th = Bottom

**ERT003** Number of people slightly injured in road traffic collisions (local performance indicator)  
(BV99c(i) Local)



**Performance Comparisons**

↑

2006/7 Top Quartile 489

2007/8 SBC Local Target 520

2% Tolerance

Polarity ↓

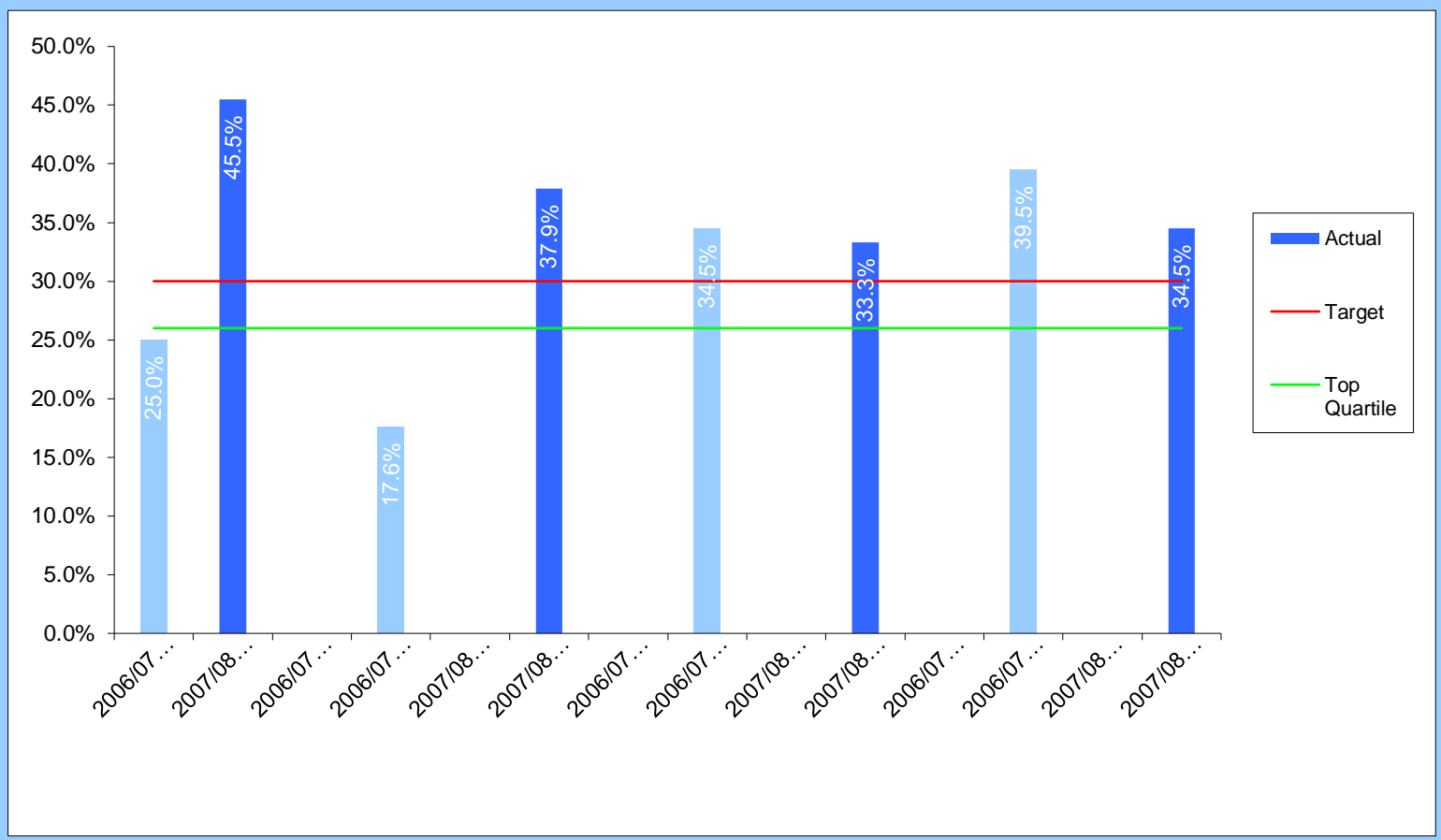
Target

★

Comments: The annual target has been achieved.

Head of Service: Mike Robinson (52)7028

**ERT004** The total number of appeal decisions allowed against the Authority's decision to refuse on planning applications, as a percentage of the total number of planning appeals against refusals of planning applications  
(BV204)



**Performance Comparisons**

↑

2006/7 Top Quartile 26.0%

2007/8 SBC Target 30.0%

Improvement

Polarity ↓

Target

○

Comments: The annual target of 30% has not been achieved. In 2007/08, there were 20 planning appeals allowed against 58 appeals against refusal of planning permission.

Head of Service: Carol Straughan (52)7026

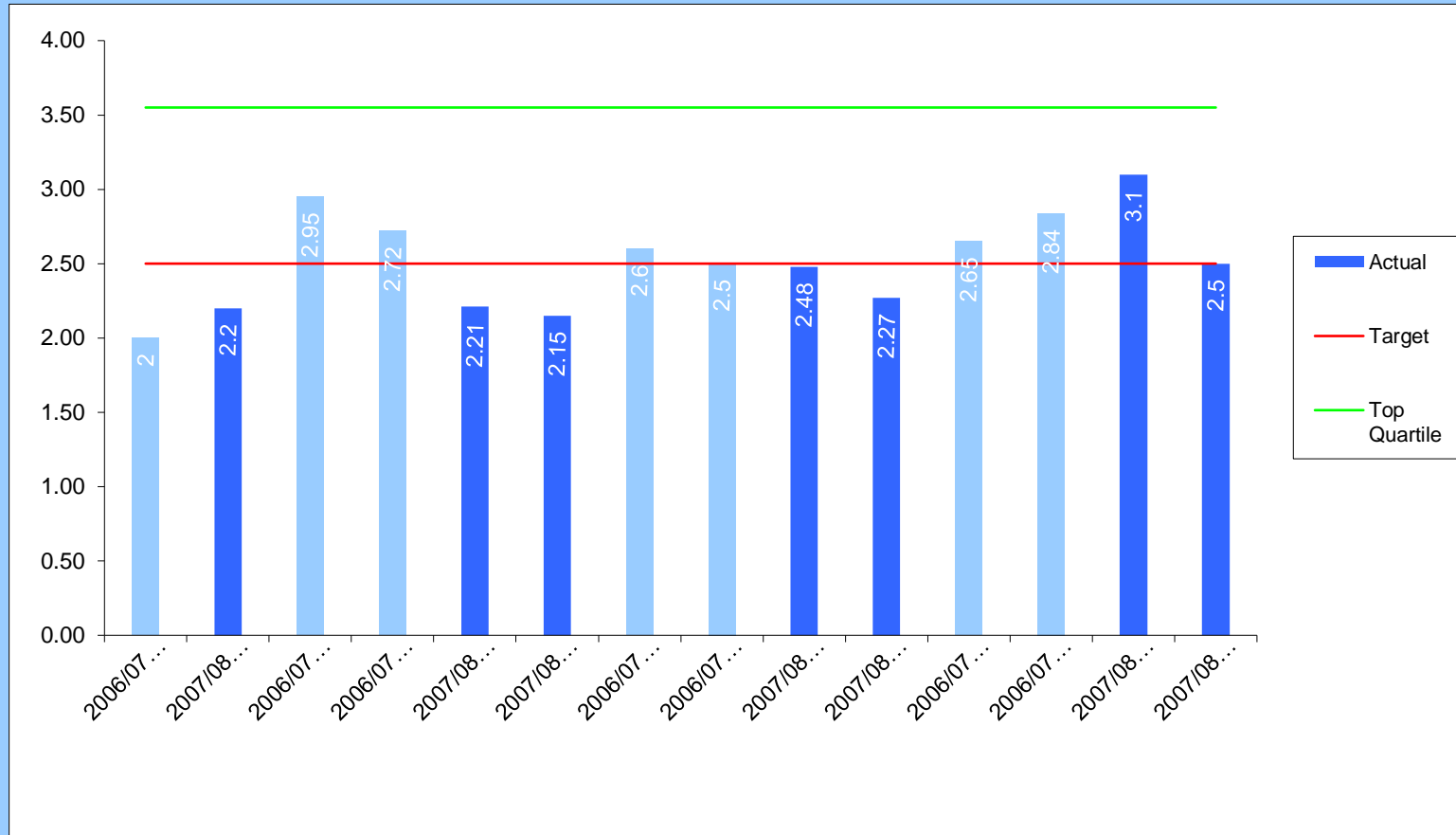


Economic Regeneration and Transport  
Key Performance Indicators

Quarter 4 2007/08

★ Achieved Target      ■ Missed Target  
○ Within Tolerance      Quartiles: 1st = Top; 4th = Bottom

**ERT005 (BV215a)**      The average number of days taken to repair a street lighting fault, which is under the control of the Local Authority



**Performance Comparisons**

↑

2006/7 Top Quartile 3.55

2007/8 SBC Target 2.50

Improvement

Polarity ↓

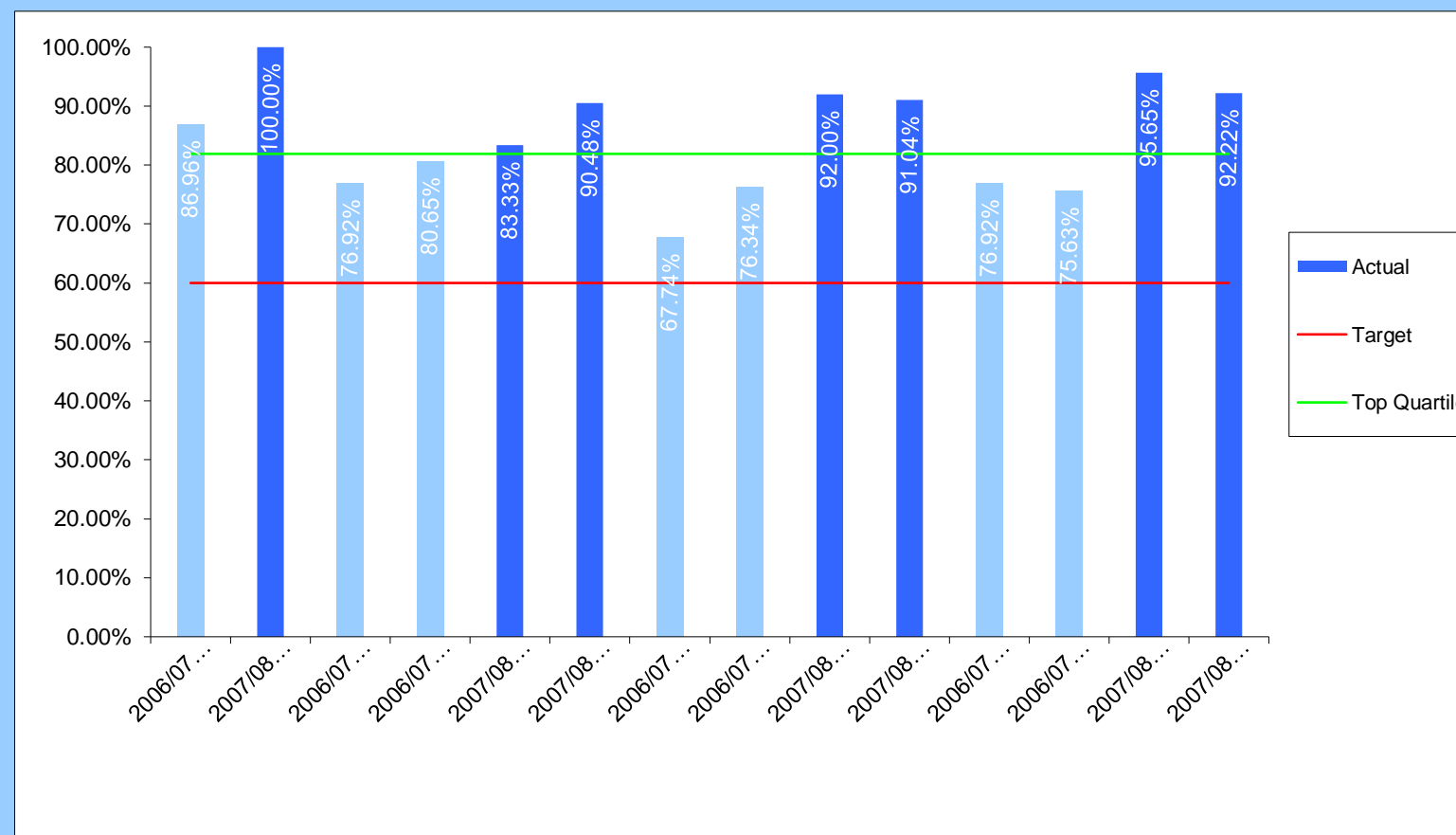
Target

★

Comments: The annual target of 2.5 days has been achieved.

Head of Service: Mike Robinson (52)7028

**ERT006 (BV109a)**      The percentage of major planning applications determined within 13 weeks



**Performance Comparisons**

↑

2006/7 Top Quartile 81.90%

2007/8 SBC Target 60.00%

No Tolerance

Polarity ↑

Target

★

Comments: The annual target of 60% has been comfortably exceeded.

Head of Service: Carol Straughan (52)7026

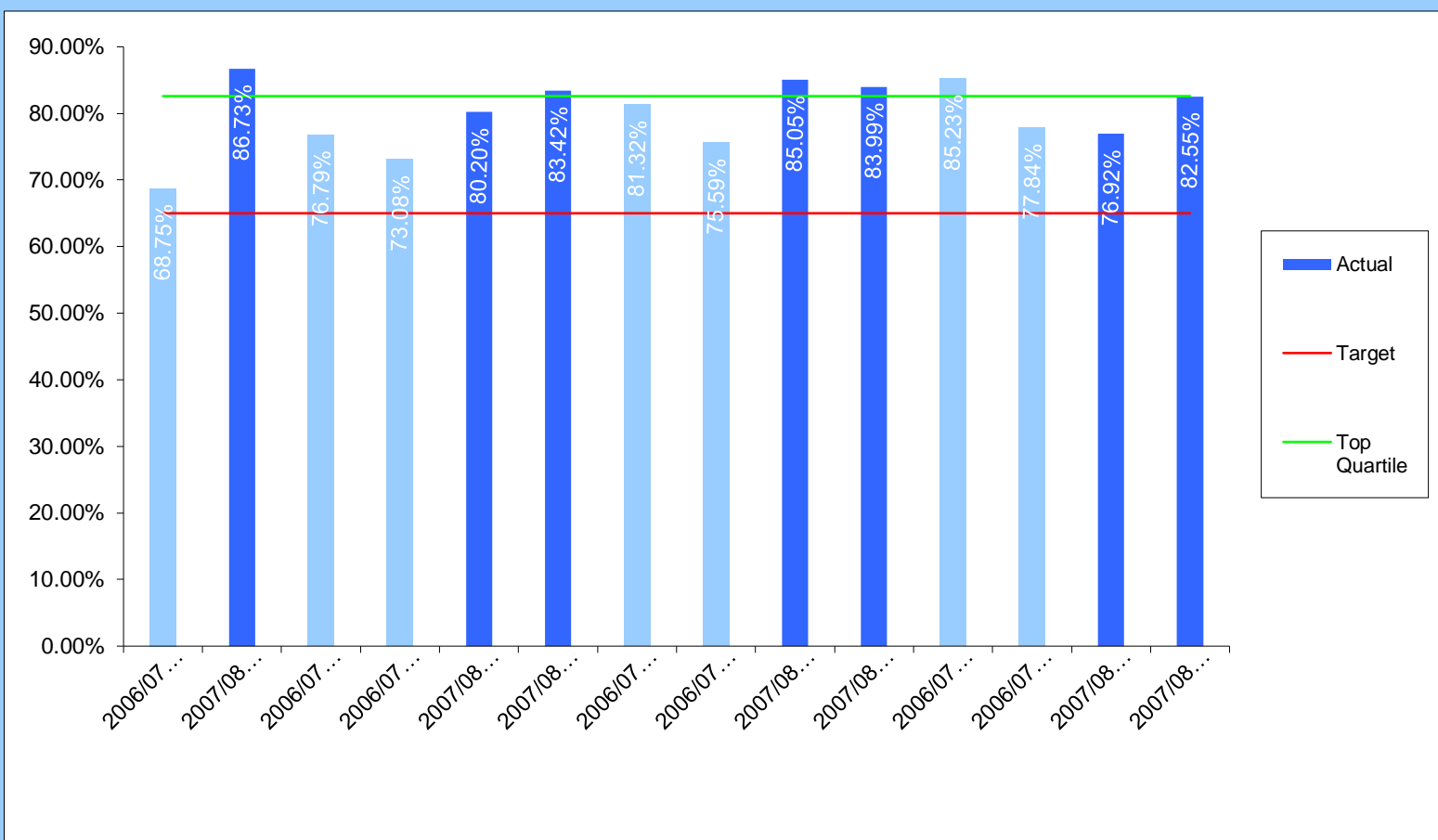


Economic Regeneration and Transport  
Key Performance Indicators

Quarter 4 2007/08

★ Achieved Target     ■ Missed Target  
○ Within Tolerance     Quartiles: 1st = Top; 4th = Bottom

**ERT007 (BV109b)**     The percentage of minor planning applications determined within 8 weeks



**Performance Comparisons**

↑

2006/7 Top Quartile 82.59%

2007/8 SBC Target 65.00%

No Tolerance

Polarity ↑

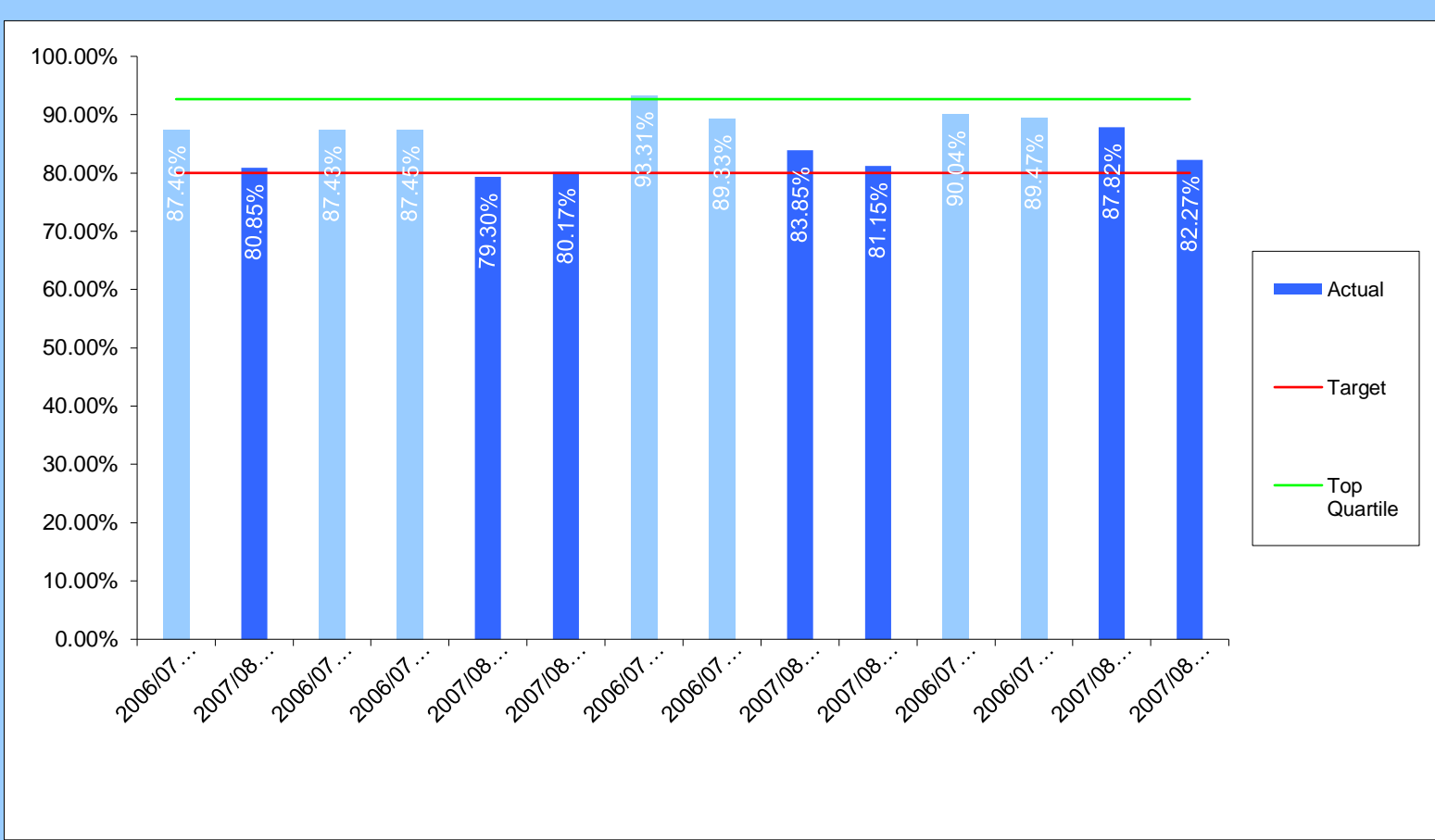
Target

★

**Comments:** The annual target of 65% has been comfortably exceeded.

**Head of Service:** Carol Straughan (52)7026

**ERT008 (BV109c)**     The percentage of other planning applications determined within 8 weeks



**Performance Comparisons**

↓

2006/7 Top Quartile 92.66%

2007/8 SBC Target 80.00%

No Tolerance

Polarity ↑

Target

★

**Comments:** The annual target of 80% has been exceeded.

**Head of Service:** Carol Straughan (52)7026