



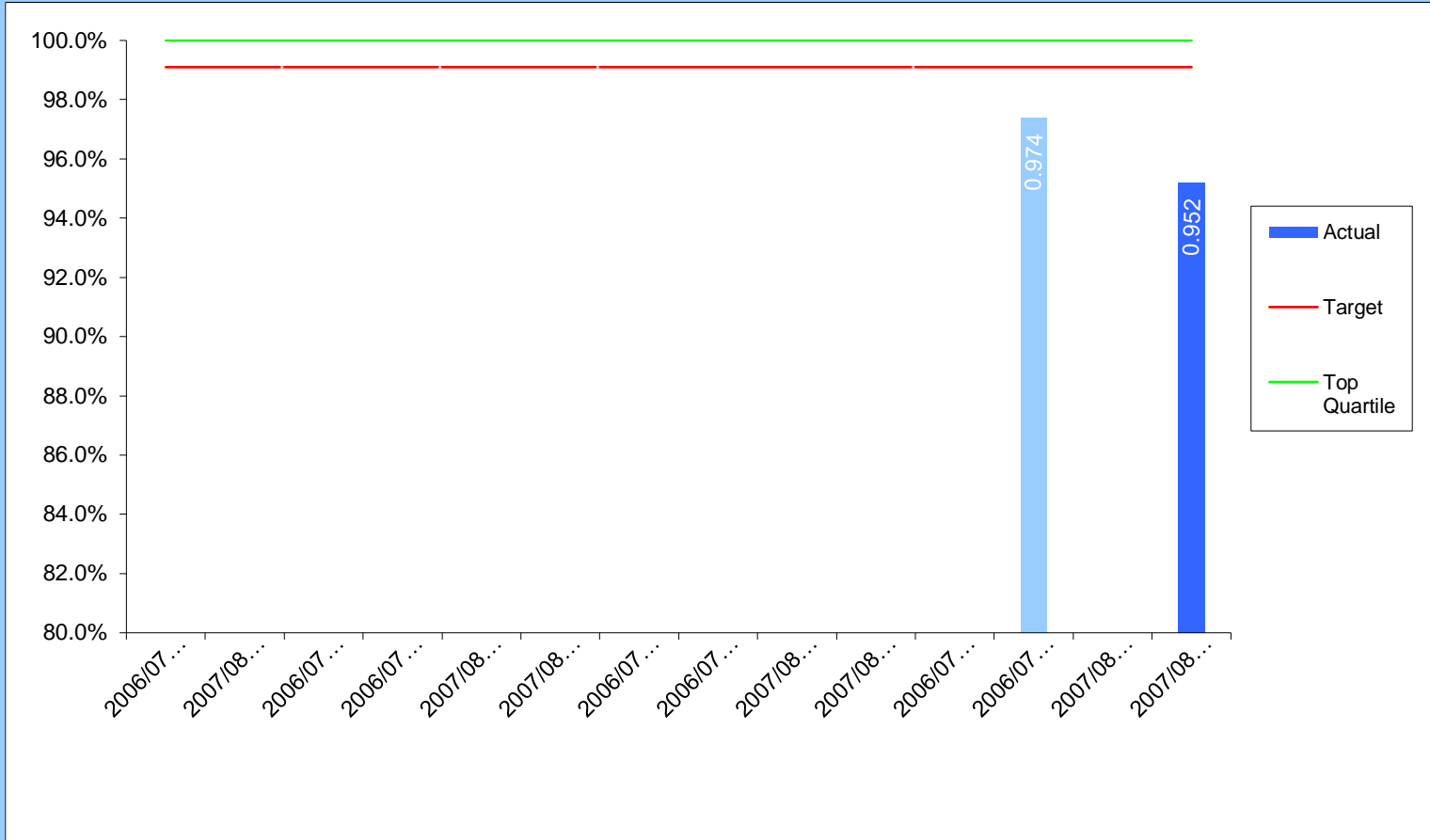
Community Safety Key Performance Indicators

- ★ Achieved Target
- Missed Target
- Within Tolerance
- Quartiles: 1st = Top; 4th = Bottom

Quarter 4 2007/08

CMS001
(BV165)

The percentage of pedestrian crossings with facilities for disabled people, as a proportion of all crossings in the Local Authority area



Performance Comparisons

↓

2006/7 Top Quartile 100.0%

2007/8 SBC Target 99.1%

2% Tolerance

Polarity ↑

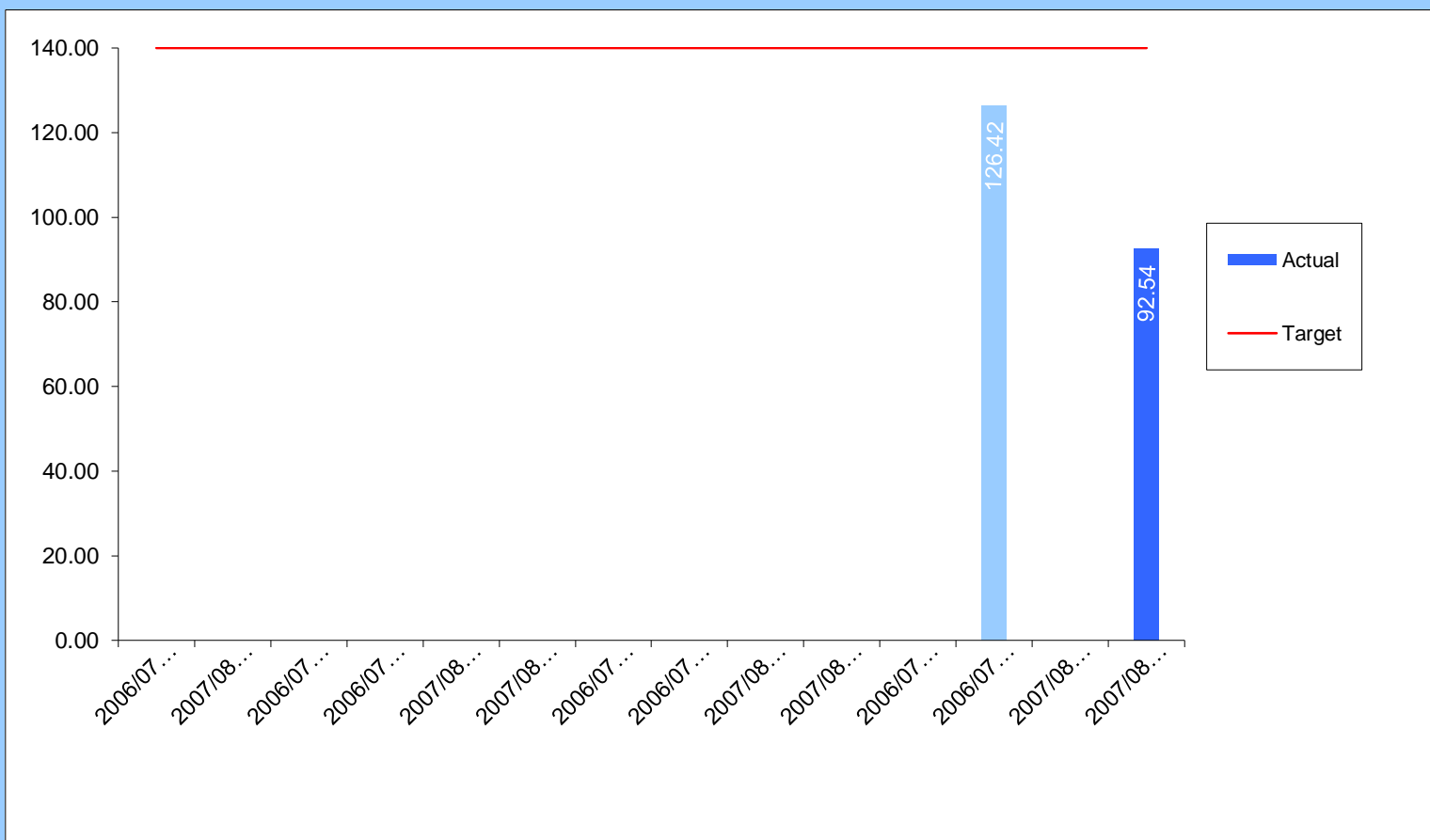
Target

■

Comments: The 2007/08 target of 99.1% was based on a programme to upgrade two sites needing tactile paving. Unfortunately one of these sites was not upgraded as scheduled due to traffic management problems that the works would cause in conjunction with other roadwork schemes already in progress.
Head of Service: Mike Robinson (52)7028

CMS002
(BV174)

The number of racial incidents per 100,000 population



Performance Comparisons

↑

2007/8 SBC Target 140.00

2% Tolerance

Polarity ↓

Target

★

Comments: The number of racial incidents recorded in schools dramatically reduced in 2007/8, the majority of this reduction was seen in the number of incidents of name calling in schools being recorded.
Head of Service: Helen Dean (52)7003



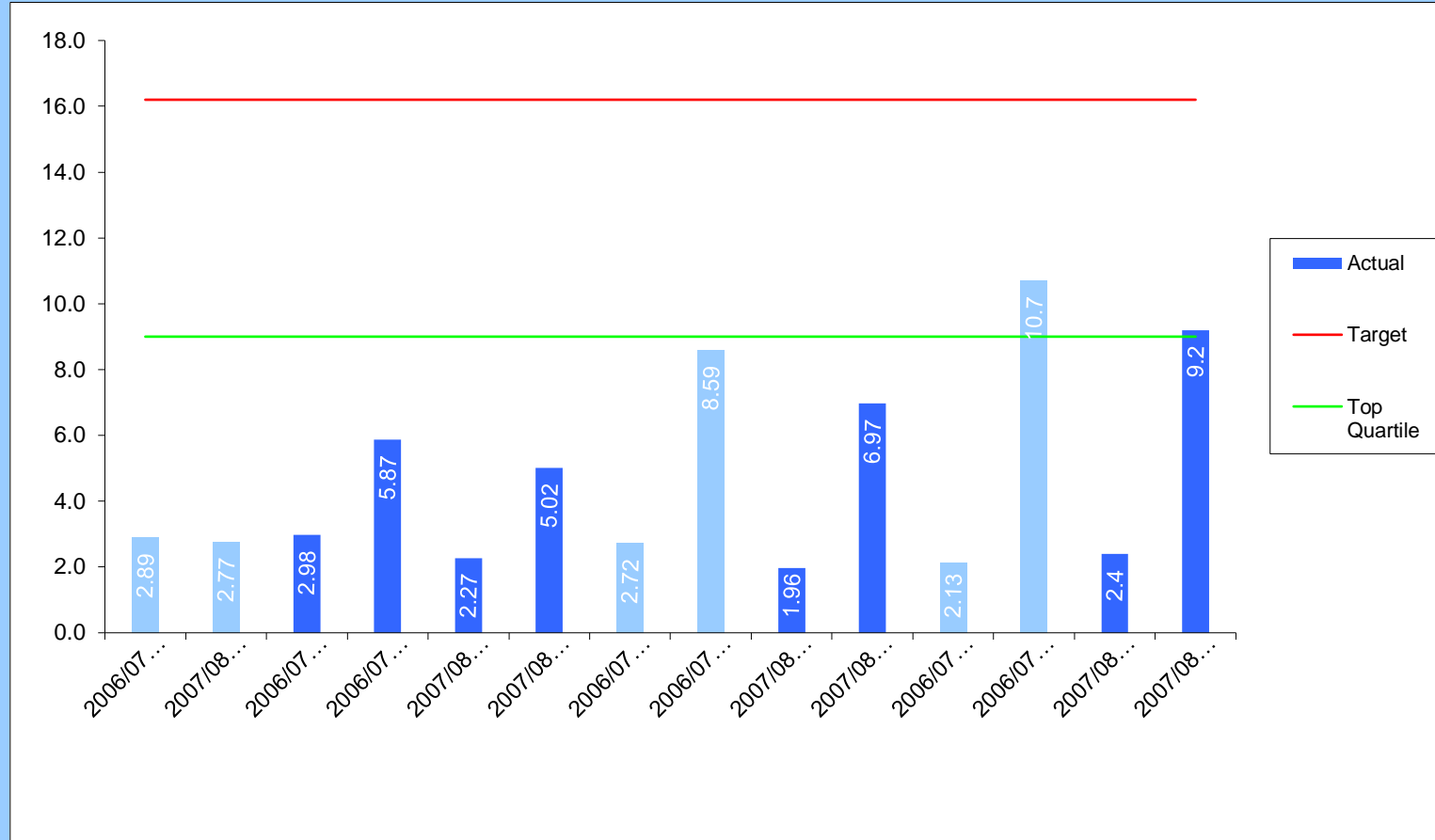
Community Safety Key Performance Indicators

- ★ Achieved Target
- Missed Target
- Within Tolerance
- Quartiles: 1st = Top; 4th = Bottom

Quarter 4 2007/08

CMS003
(BV126)

Domestic burglaries per year, per 1,000 households in the Local Authority area



Performance Comparisons

↑

2006/7 Top Quartile 9.0

2007/8 SBC Target 16.2

Improvement

Polarity ↓

Target

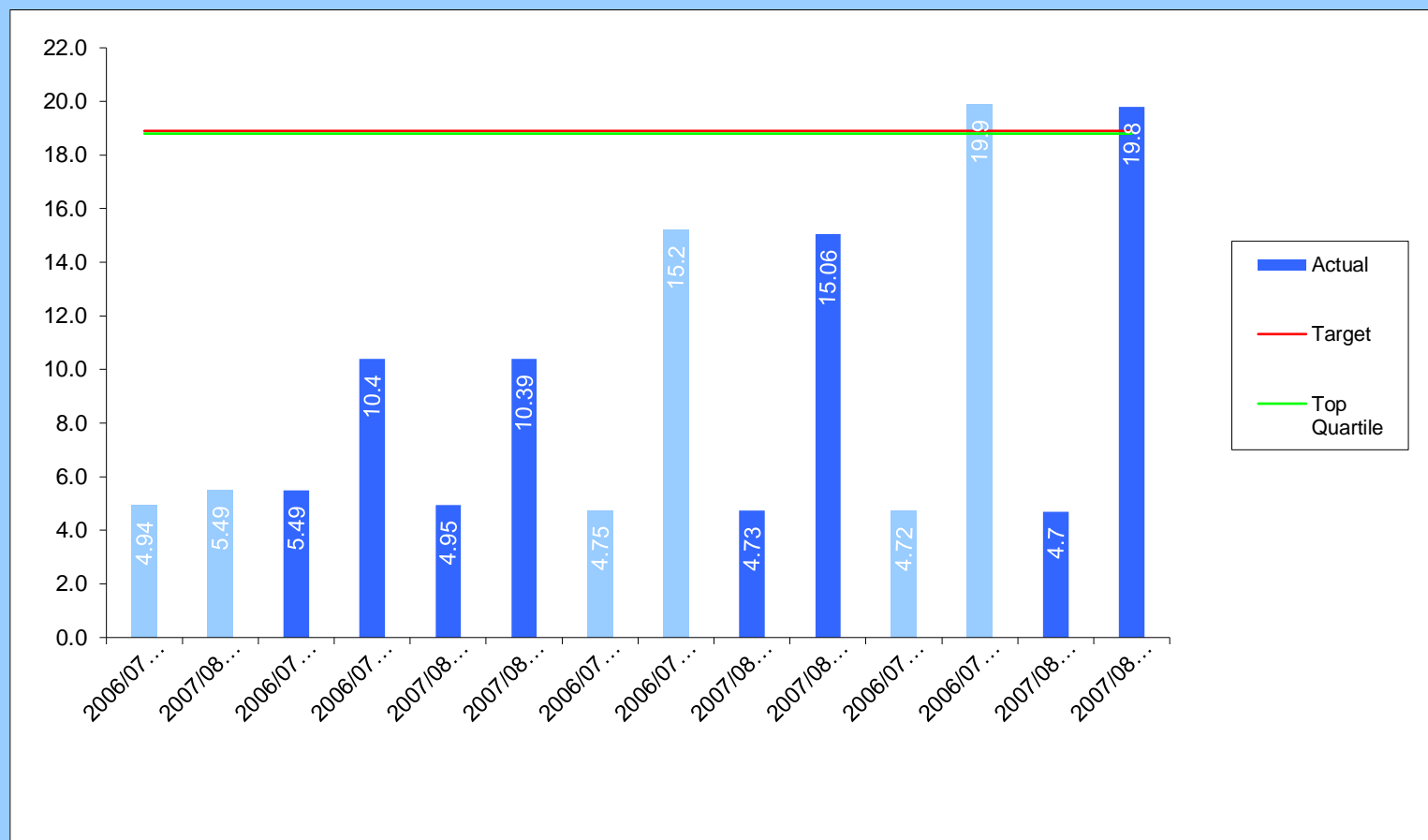
★

Comments: Domestic burglary has been steadily reducing for the last six years and is now at its lowest levels since records began.

Head of Service: Mike Batty (52)7074

CMS004
(BV127a)

Violent crimes per year, per 1,000 population in the Local Authority area



Performance Comparisons

↑

2006/7 Top Quartile 18.8

2007/8 SBC Target 18.9

Improvement

Polarity ↓

Target

○

Comments: Although the target has not been met, we have seen a 36% reduction in serious violent crime on the previous year. Low level common assault and harassment account for 51% of all violence against the persons. Common assault accounted for the greatest increase in the figures (116 more than in 2006/7).

Head of Service: Mike Batty (52)7074



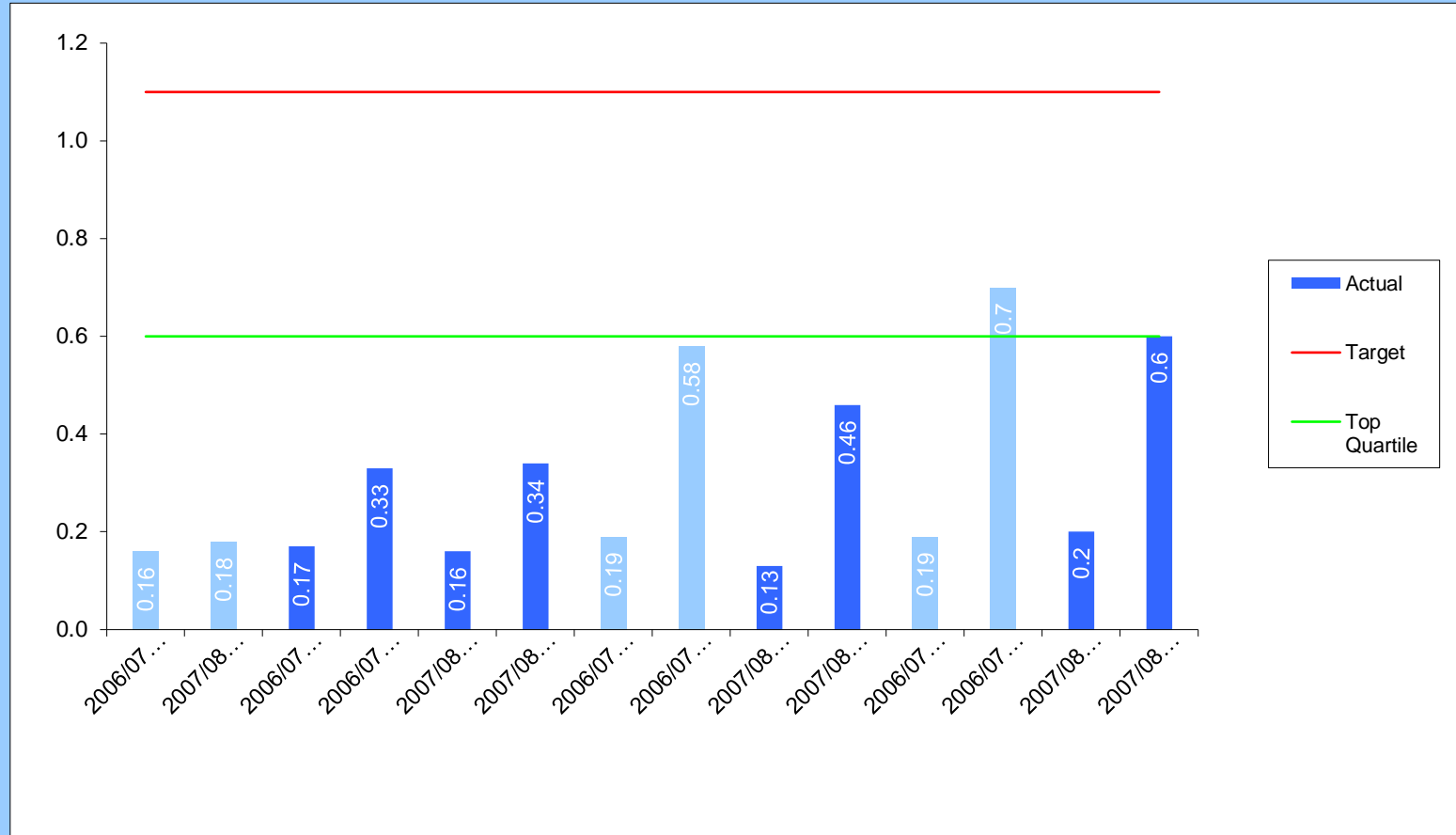
Community Safety Key Performance Indicators

- ★ Achieved Target
- Missed Target
- Within Tolerance
- Quartiles: 1st = Top; 4th = Bottom

Quarter 4 2007/08

CMS005
(BV127b)

Robberies per year, per 1,000 population in the Local Authority area



Performance Comparisons

↑

2006/7 Top Quartile 0.6

2007/8 SBC Target 1.1

Improvement

Polarity ↓

Target

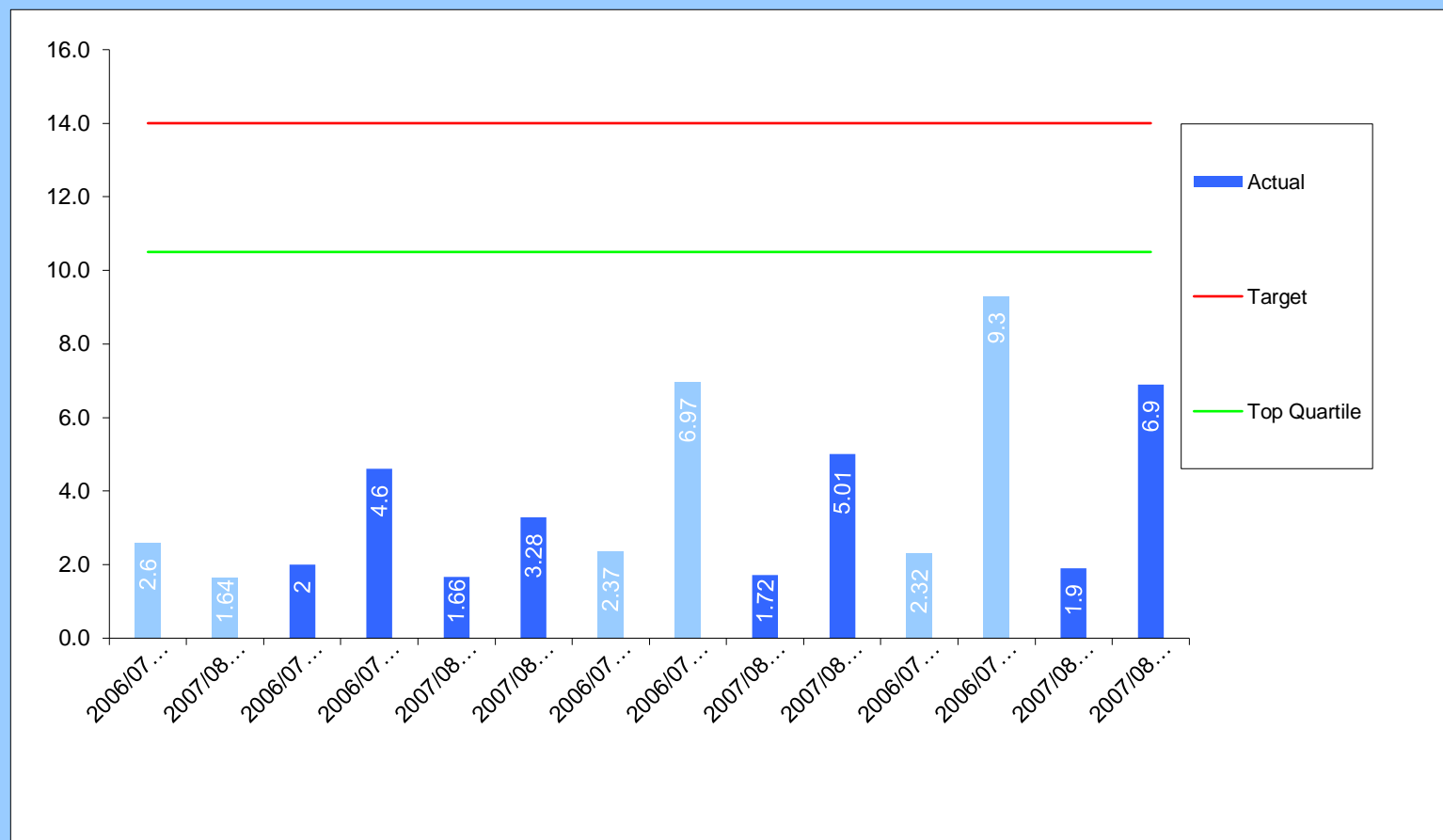
★

Comments: The levels of robbery are very low in Stockton and have been reducing for a number of years. This is partly due to greater education (both nationally and locally) about not having personal items on display when walking alone on the streets at night. The police have also tackled false reporting of robbery for compensation purposes, using a range of measures such as reviewing CCTV information to prove whether reported robberies are genuine.

Head of Service: Mike Batty (52)7074

CMS006
(BV128)

Vehicle crime per 1,000 population in the Local Authority area



Performance Comparisons

↑

2006/7 Top Quartile 10.5

2007/8 SBC Target 14.0

Improvement

Polarity ↓

Target

★

Comments: We have seen a 25.8% reduction in vehicle crime compared to 2006/07. Various initiatives and awareness raising campaigns have influenced this reduction, particularly in relation to the theft of Satellite Navigation systems.

Head of Service: Mike Batty (52)7074



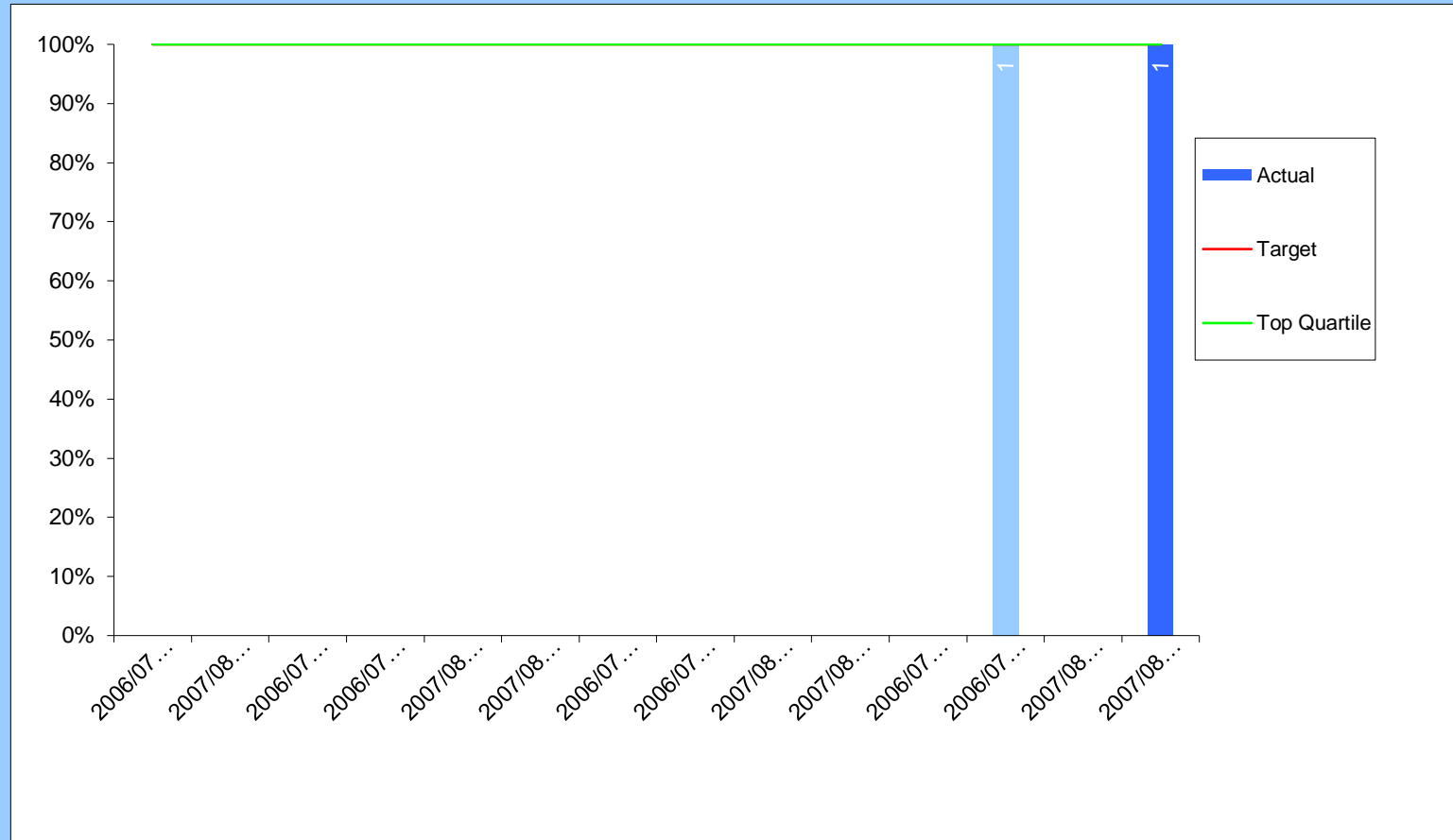
Community Safety Key Performance Indicators

- ★ Achieved Target
- Missed Target
- Within Tolerance
- Quartiles: 1st = Top; 4th = Bottom

Quarter 4 2007/08

CMS007
(BV175)

Percentage of racial incidents resulting in further action



Performance Comparisons

↔

2006/7 Top Quartile 100%

2007/8 SBC Target 100%

No Tolerance

Polarity ↑

Target

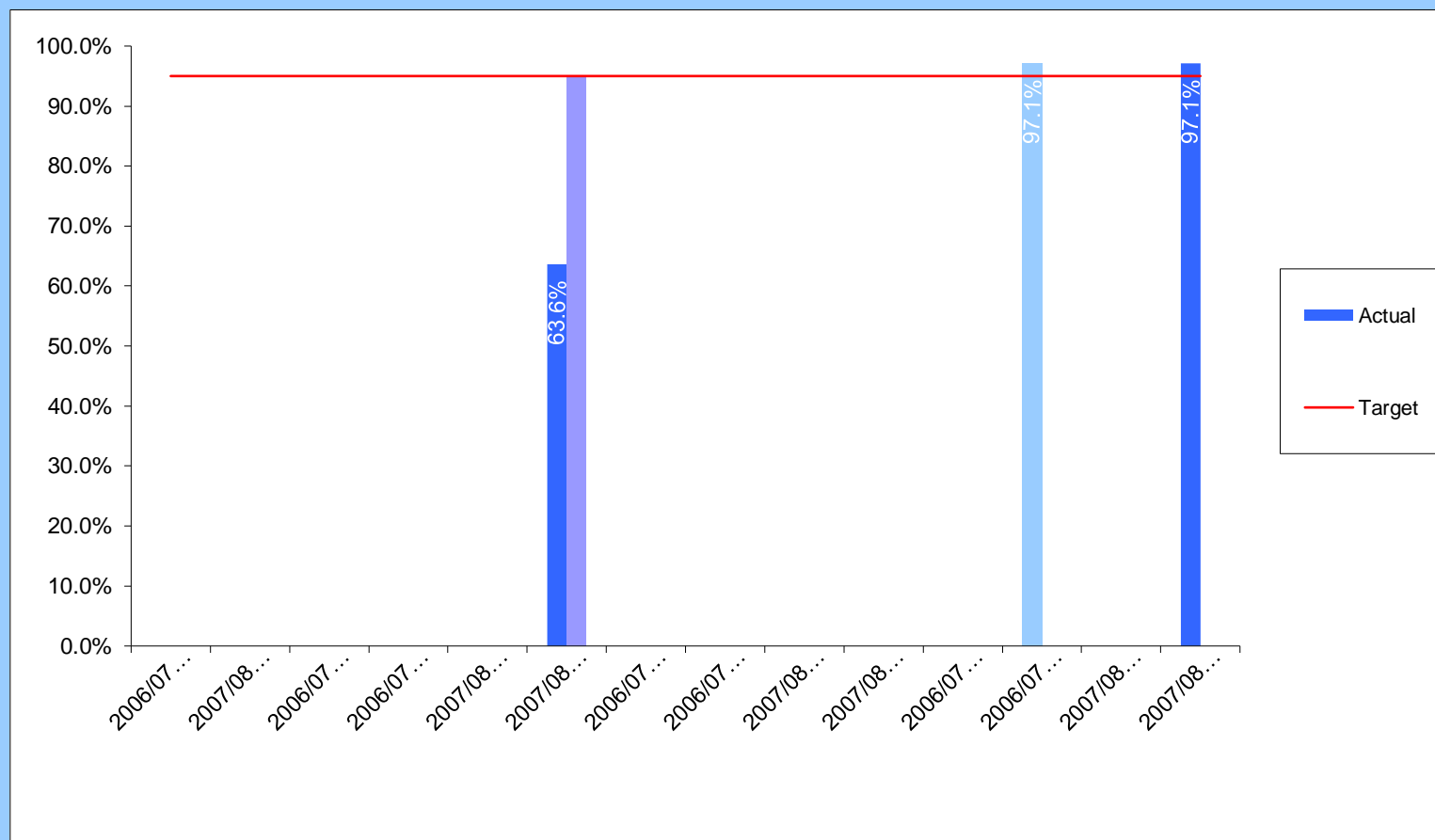
★

Comments: The annual target has been achieved.

Head of Service: Helen Dean (52)7003

CMS008
(CS07)

Trading standards - levels of business compliance - high risk premises



Performance Comparisons

↔

2007/8 SBC Target 95.0%

No Tolerance

Polarity ↑

Target

★

Comments: These are provisional figures as at 30th March 2008. Trading Standards are not required to submit final returns to BERR (Business Enterprise and Regulatory Reform) until 30th June 2008.

Head of Service: Mike Batty (52)7074



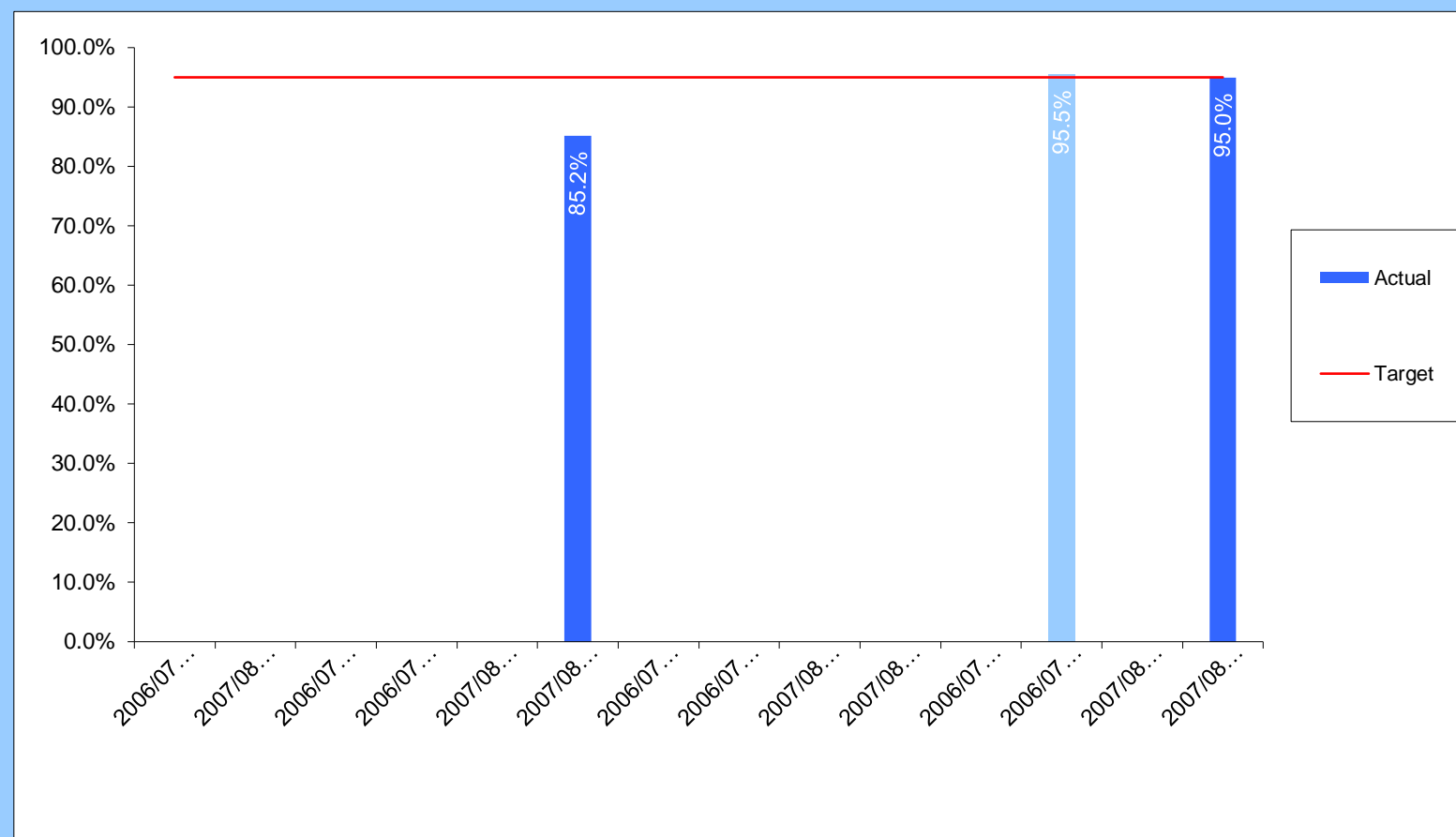
Community Safety Key Performance Indicators

- ★ Achieved Target
- Missed Target
- Within Tolerance
- Quartiles: 1st = Top; 4th = Bottom

Quarter 4 2007/08

CMS009
(CS010)

Trading standards - levels of business compliance - medium risk premises



Performance Comparisons

↔

2007/8 SBC Target 95.0%

No Tolerance

Polarity ↑

Target

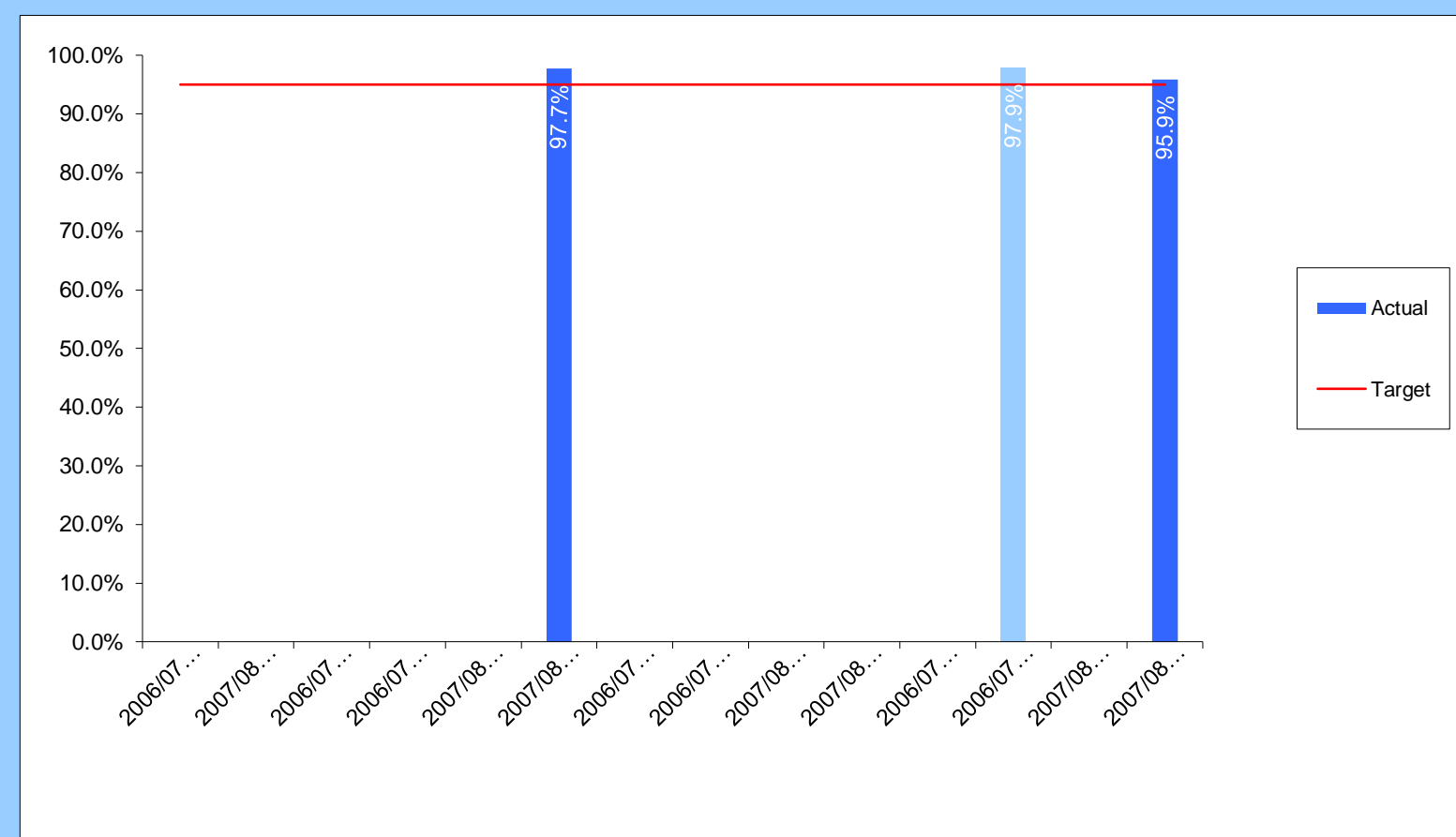
★

Comments: These are provisional figures as at 30th March 2008. Trading Standards are not required to submit final returns to BERR (Business Enterprise and Regulatory Reform) until 30th June 2008.

Head of Service: Mike Batty (52)7074

CMS010
(CS011)

Trading standards - levels of business compliance - low risk premises



Performance Comparisons

↓

2007/8 SBC Target 95.0%

No Tolerance

Polarity ↑

Target

★

Comments: These are provisional figures as at 30th March 2008. Trading Standards are not required to submit final returns to BERR (Business Enterprise and Regulatory Reform) until 30th June 2008.

Head of Service: Mike Batty (52)7074