



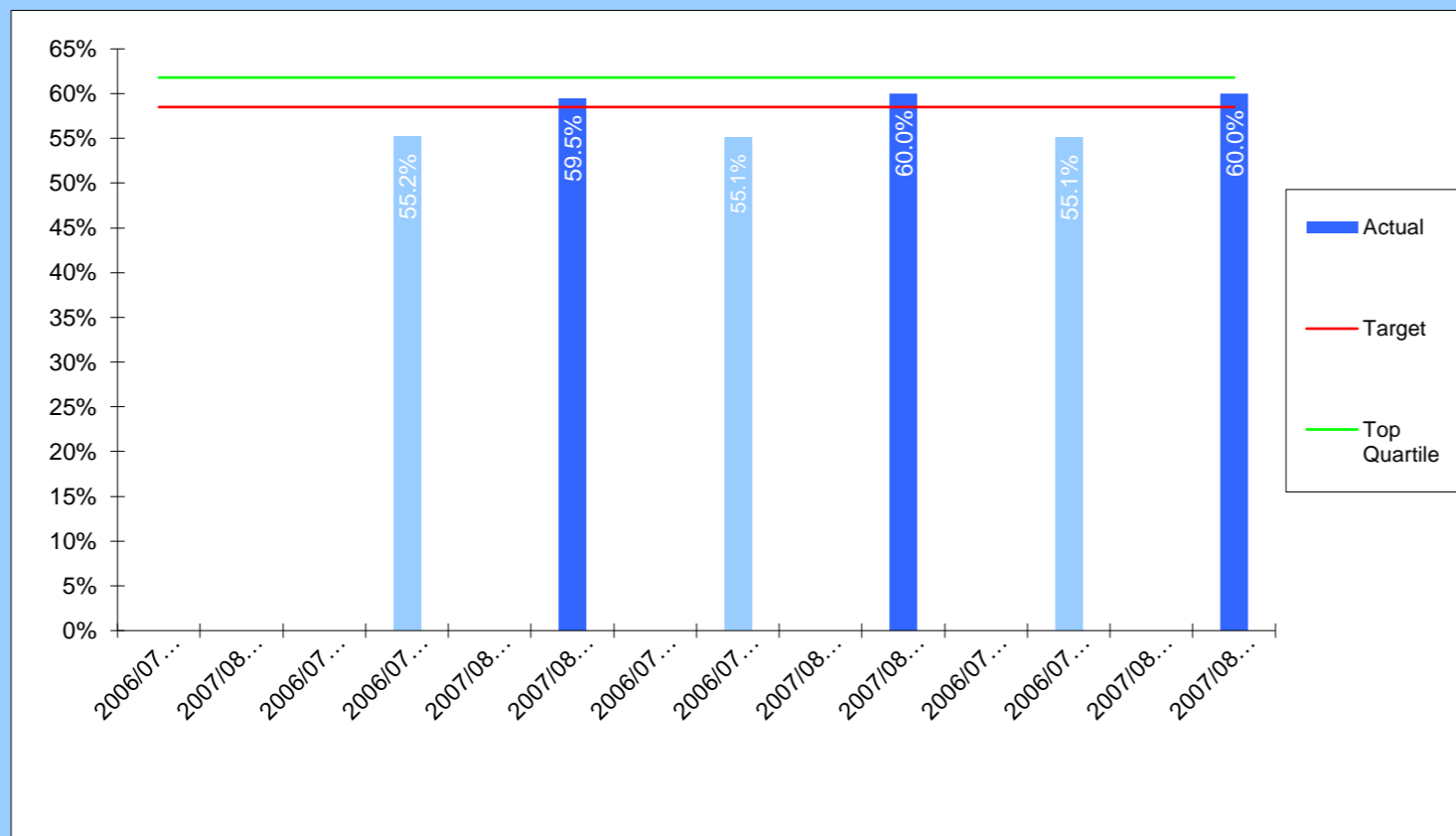
Children & Young People Key Performance Indicators

★ Achieved Target ■ Missed Target
○ Within Tolerance Quarters: 1st = Top; 4th = Bottom

Quarter 4 2007/08

CYP001
(BV38)

Percentage of 15 year old pupils in schools achieving 5 or more GCSEs at grades A*-C or equivalent



Performance Comparisons

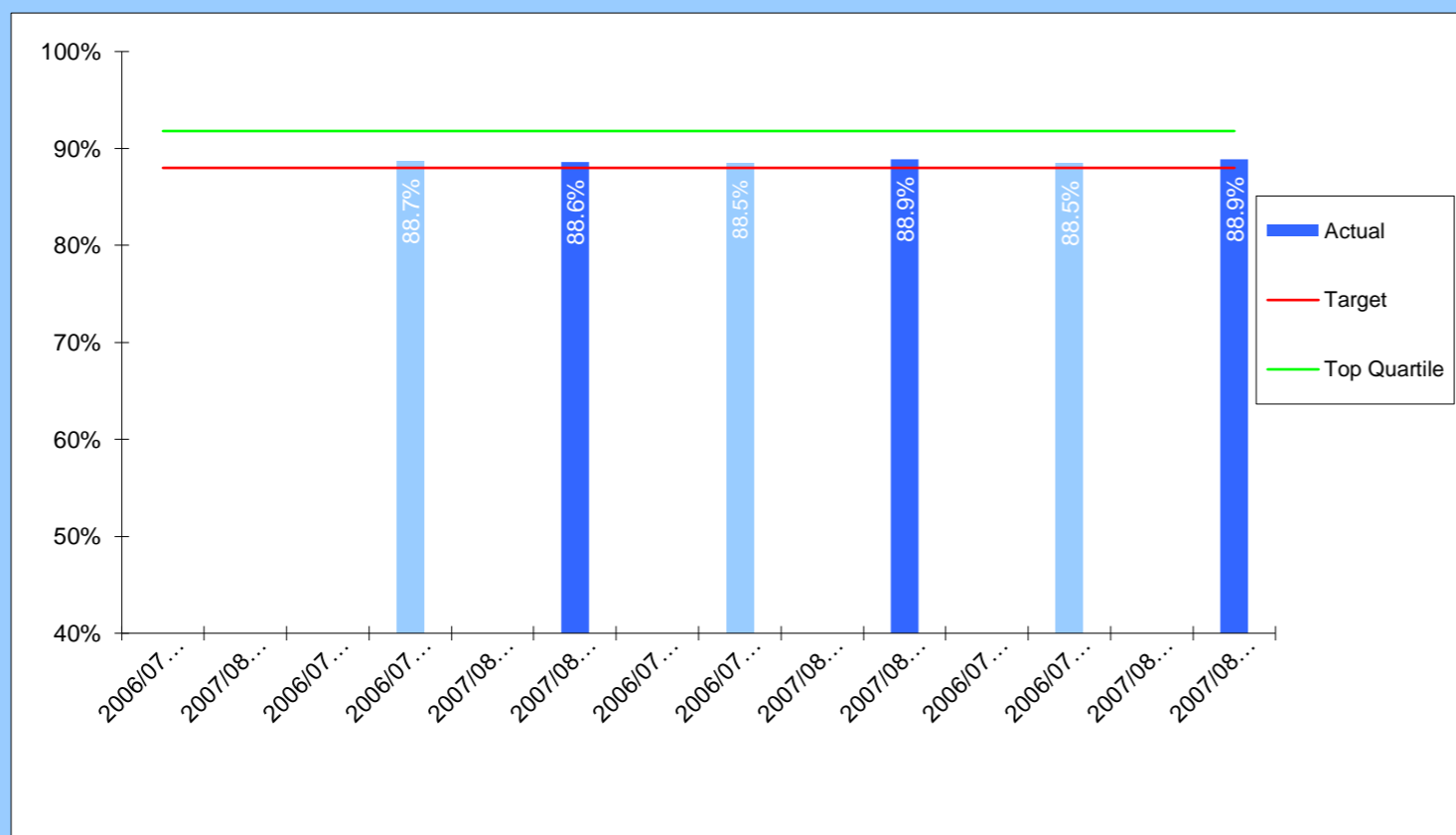
↑
 2006/7 Top Quartile 61.8%
 2007/8 SBC Target 58.5%
 Tolerance 2%
 Polarity ↑
 Target
★

Comments: Performance is as per published national performance tables. Results show considerable improvement (nearly 5 percentage points) on 2006, further narrowing the gap between local and national performance to within 1%.

Head of Service: Julia Morrison (52)7041

CYP002
(BV39)

Percentage of 15 year old pupils in schools achieving 5 or more GCSEs or equivalent at grades A*-G including English and Maths



Performance Comparisons

↑
 2006/7 Top Quartile 91.8%
 2007/8 SBC Target 88.0%
 Tolerance 2%
 Polarity ↑
 Target
★

Comments: Year end performance is as evidenced by published performance data from DCSF but one school's English results were missing. This affects LA performance and actual local figure should be 88.9% (as shown for Q3) - which represents a higher rate of increase than nationally, and is above the national average performance of 86.4%.

Head of Service: Julia Morrison (52)7041



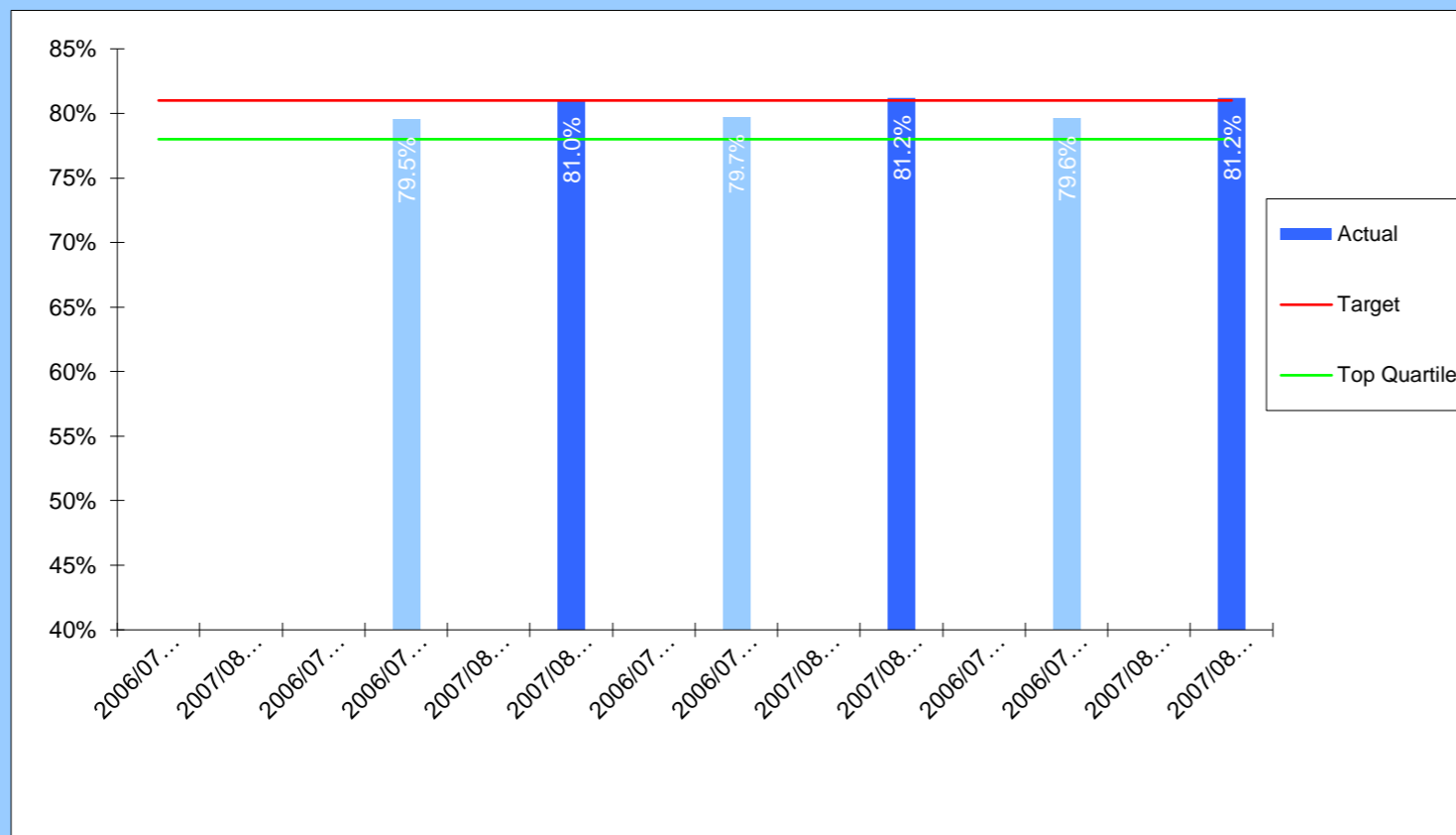
Children & Young People Key Performance Indicators

★ Achieved Target ■ Missed Target
○ Within Tolerance Quarters: 1st = Top; 4th = Bottom

Quarter 4 2007/08

CYP003
(BV40)

Percentage of pupils in schools achieving Level 4 or above at Key Stage 2 in Maths



Performance Comparisons

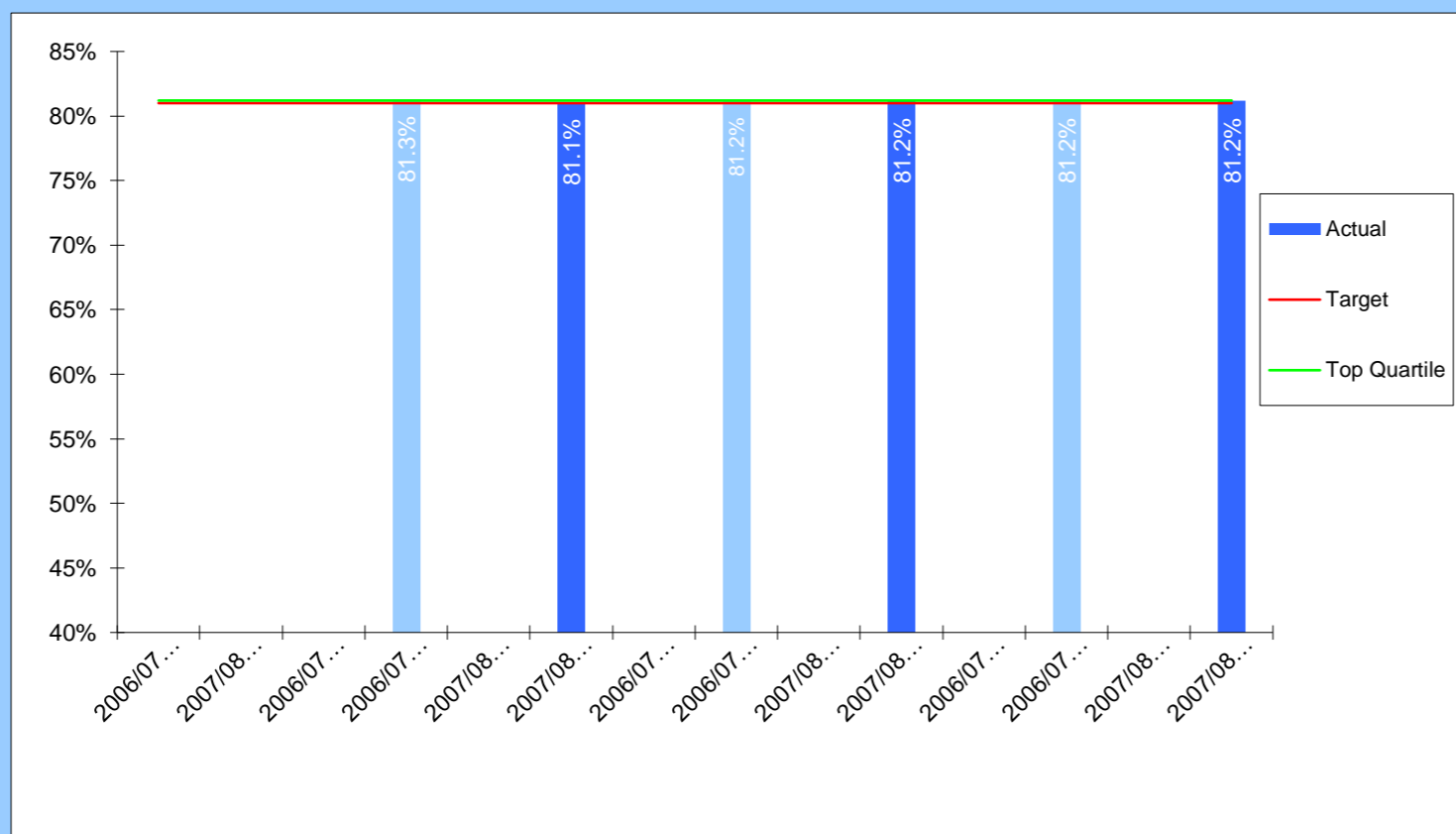
↑
 2006/7 Top Quartile 78.0%
 2007/8 SBC Target 81.0%
 Tolerance 2%
 Polarity ↑
 Target
★

Comments: Performance reflects data published in DCSF performance tables and thereby end of year performance. Performance improved on 2006 at a higher rate than nationally and is now over 4 percentage points above the national average.

Head of Service: Julia Morrison (52)7041

CYP004
(BV41)

Percentage of pupils in schools achieving Level 4 or above at Key Stage 2 in English



Performance Comparisons

↔
 2006/7 Top Quartile 81.2%
 2007/8 SBC Target 81.0%
 Tolerance 2%
 Polarity ↑
 Target
★

Comments: Performance reflects data published in DCSF performance tables and thereby end of year performance. Performance has been sustained at a high level, above the national average of 80%.

Head of Service: Julia Morrison (52)7041

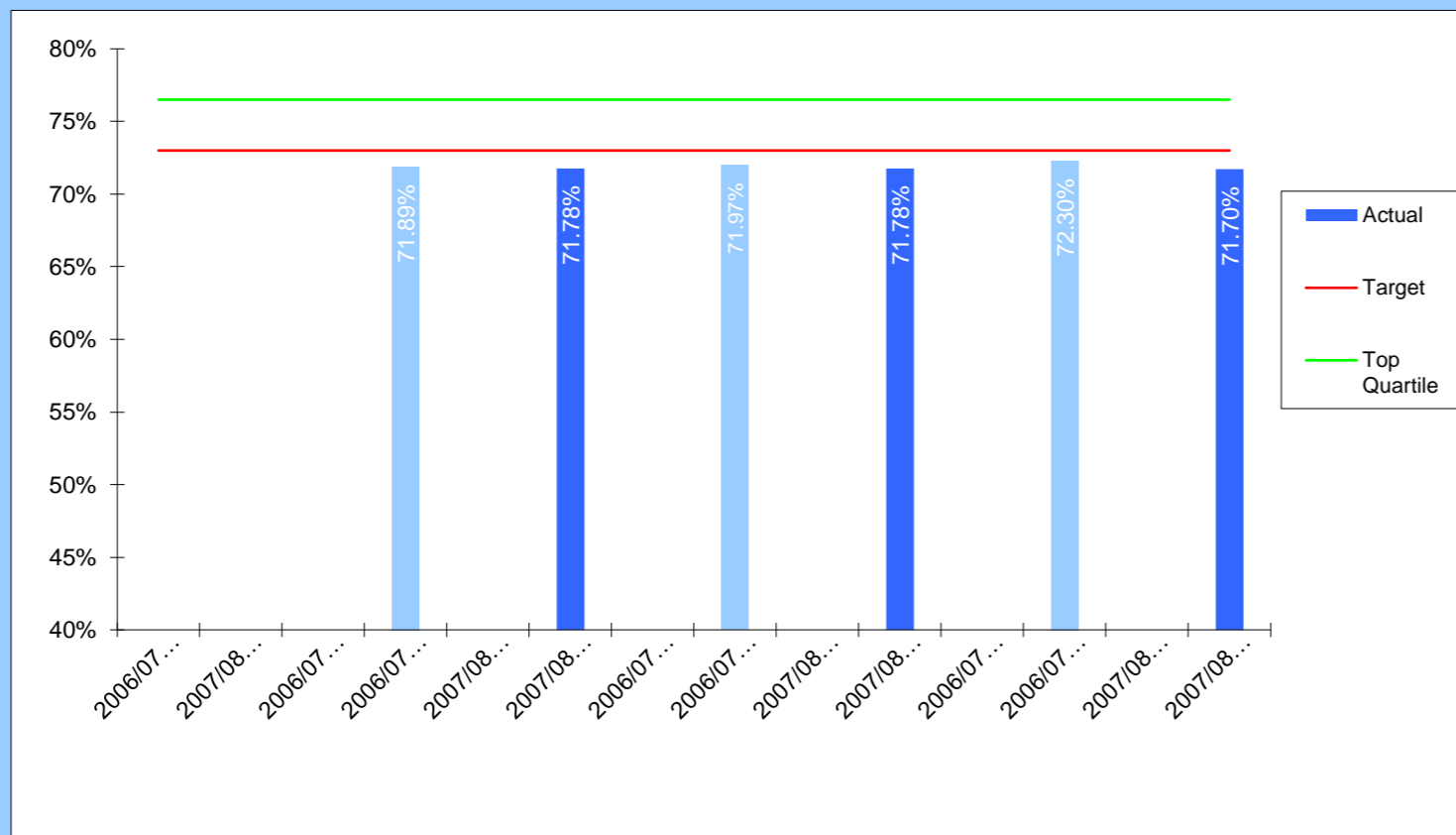


Children & Young People Key Performance Indicators

★ Achieved Target ■ Missed Target
○ Within Tolerance Quarters: 1st = Top; 4th = Bottom

Quarter 4 2007/08

CYP005 (BV181a) Percentage of 14 year old pupils in schools achieving Level 5 or above at Key Stage 3 in English



Performance Comparisons

↔

2006/7 Top Quartile 76.50%

2007/8 SBC Target 73.00%

Tolerance 2%

Polarity ↑

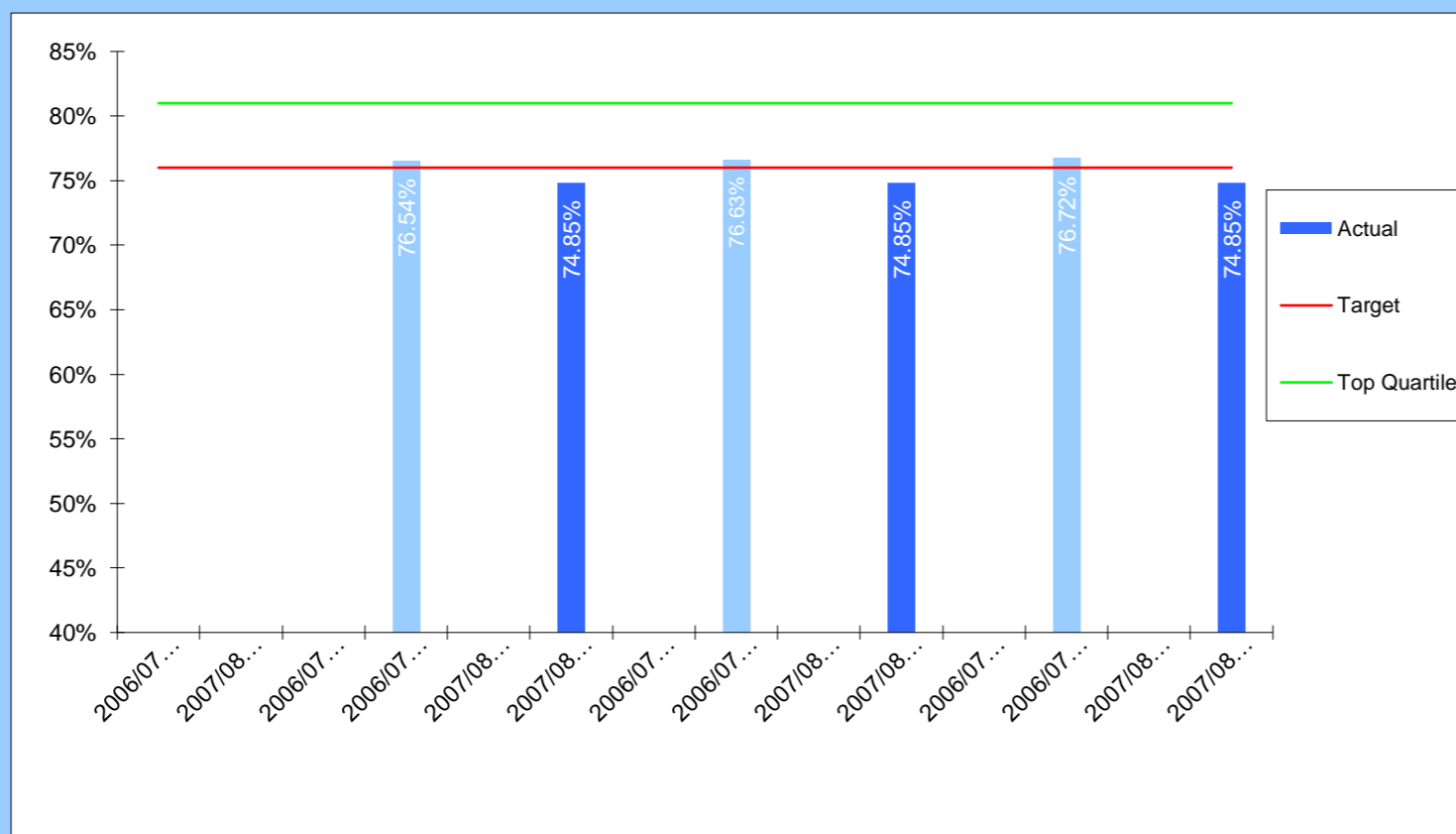
Target

○

Comments: Data as per published DCSF performance tables. Performance remained close to last year's level, 2 percentage points below the national average.

Head of Service: Julia Morrison (52)7041

CYP006 (BV181b) Percentage of 14 year old pupils in schools achieving Level 5 or above at Key Stage 3 in Maths



Performance Comparisons

↔

2006/7 Top Quartile 81.00%

2007/8 SBC Target 76.00%

Tolerance 2%

Polarity ↑

Target

○

Comments: Data as per published DCSF performance tables. Performance dipped by nearly 2% on 2006, 1 percentage point below the national average which also dipped.

Head of Service: Julia Morrison (52)7041

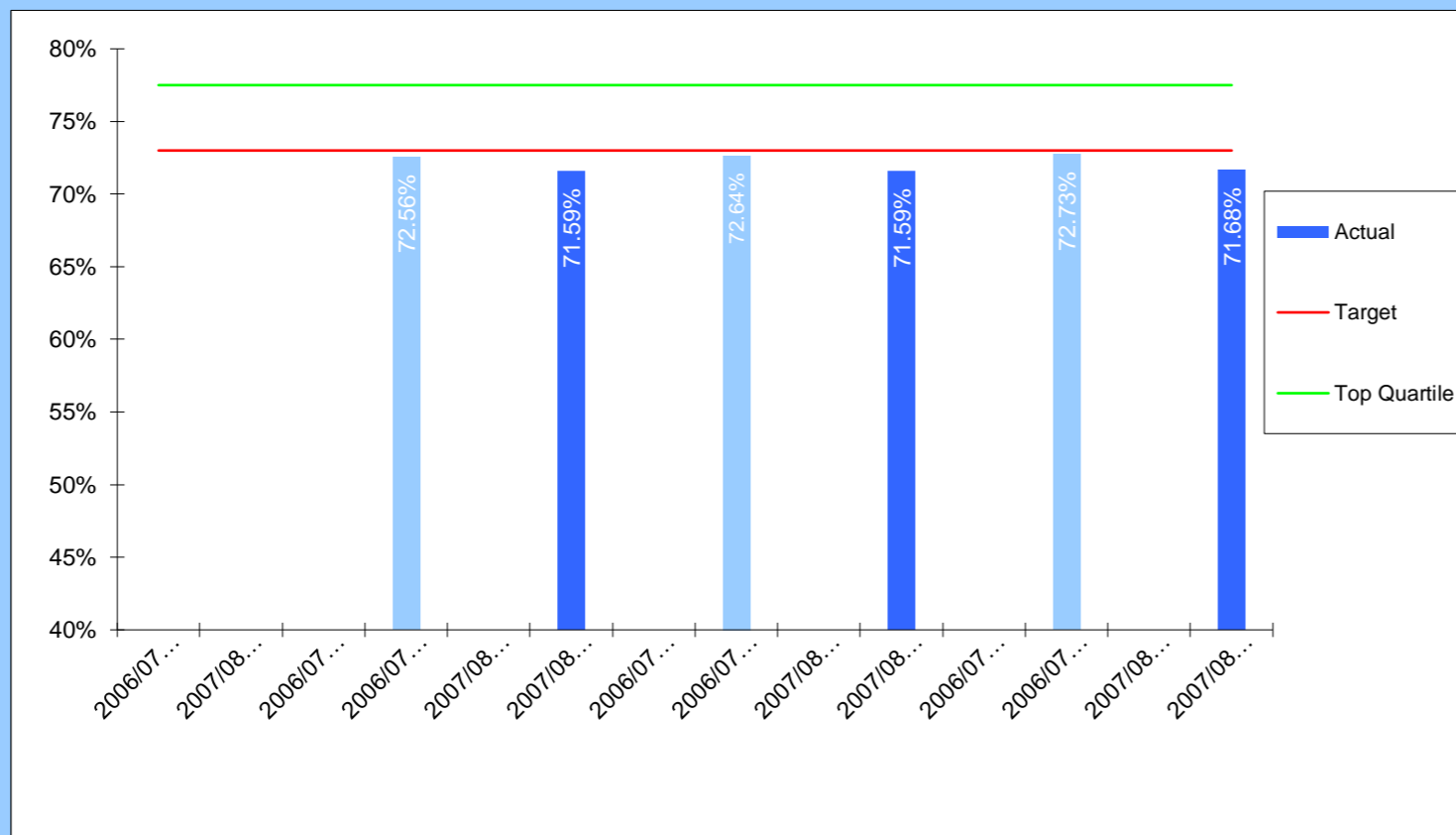


Children & Young People Key Performance Indicators

★ Achieved Target ■ Missed Target
○ Within Tolerance Quarters: 1st = Top; 4th = Bottom

Quarter 4 2007/08

CYP007 (BV181c) Percentage of 14 year old pupils in schools achieving Level 5 or above at Key Stage 3 in Science



Performance Comparisons

↓

2006/7 Top Quartile 77.50%

2007/8 SBC Target 73.00%

Tolerance 2%

Polarity ↑

Target

○

Comments: Data as per published DCSF performance tables. Performance dipped by 2 percentage points on 2006, below the national average of 73%.

Head of Service: Julia Morrison (52)7041

CYP008 (BV197) Percentage change in the number of conceptions to females aged under 18, per 1,000 females aged 15-17 resident in the area



Performance Comparisons

↓

2006/7 Top Quartile -17.5%

2007/8 SBC Target -13.5%

Tolerance 2%

Polarity ↓

Target

■

Comments: The latest national data (published in Feb 08) relates to the 2006 period, and shows an increase in the conception rate from the previous year. The local Teenage Pregnancy Strategy has been endorsed by the Regional Government Adviser as being a robust approach to addressing the necessary issues to improve performance, allowing for the long-term nature of the impact of initiatives.

Head of Service: Peter Seller (52)7043



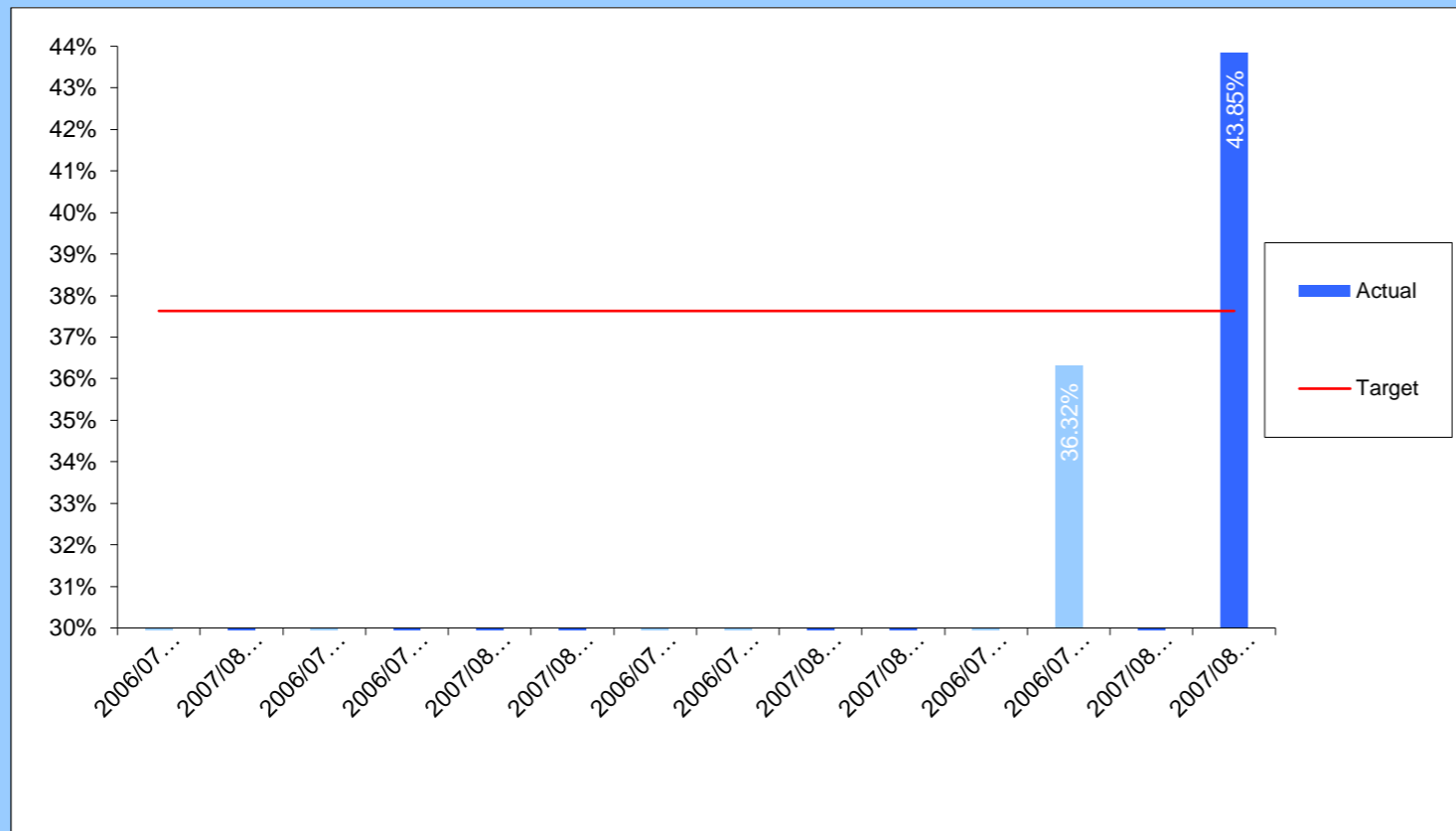
Children & Young People Key Performance Indicators

★ Achieved Target ■ Missed Target
○ Within Tolerance Quartiles: 1st = Top; 4th = Bottom

Quarter 4 2007/08

CYP010
(Ch030)

Young Offenders - The proportion of people who re-offend within 12 months of the original offence



Performance Comparisons

↓

2007/8 SBC Target 37.63%

Tolerance 2%

Polarity ↓

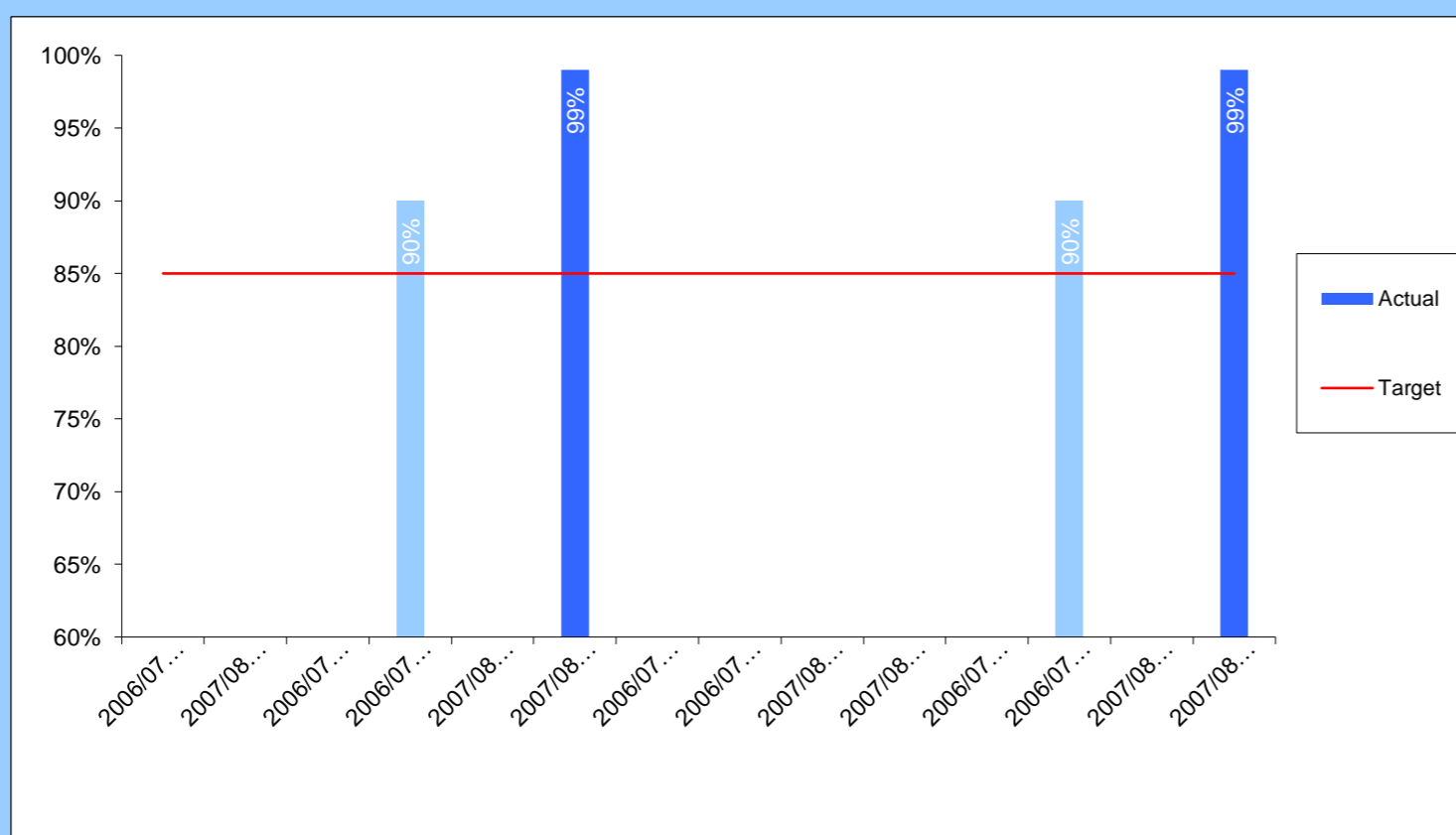
Target

■

Comments: The data refers to the cohort of those who offended between Oct-Dec 2006 and who reoffended in the following 12months. The re-offending rate increased for the second year running and is higher than the average of comparator groups. Analysis suggests that the actual proportion of 10-17 yr olds in the area who offend is relatively low compared to other similar areas but they tend to be involved in more serious offences and have a greater risk of re-offending. Addressing recidivism remains a high priority in the Children & Young People's Plan, with detailed actions set out in the Youth Justice Plan and the Youth Offending Service's post-inspection action plan.
Head of Service: Jane Humphreys (52)7053

CYP011
(Ch033)

Percentage of 5-11 year olds in primary schools participating in an average of 2 hours high quality PE and school sport per week



Performance Comparisons

↑

2007/8 SBC Target 85%

Tolerance 2%

Polarity ↑

Target

★

Comments: Further improvement on 2006 performance resulted in the LPSA target being achieved by July 2007.

Head of Service: Julia Morrison (52)7041



Children & Young People Key Performance Indicators



Achieved Target



Missed Target



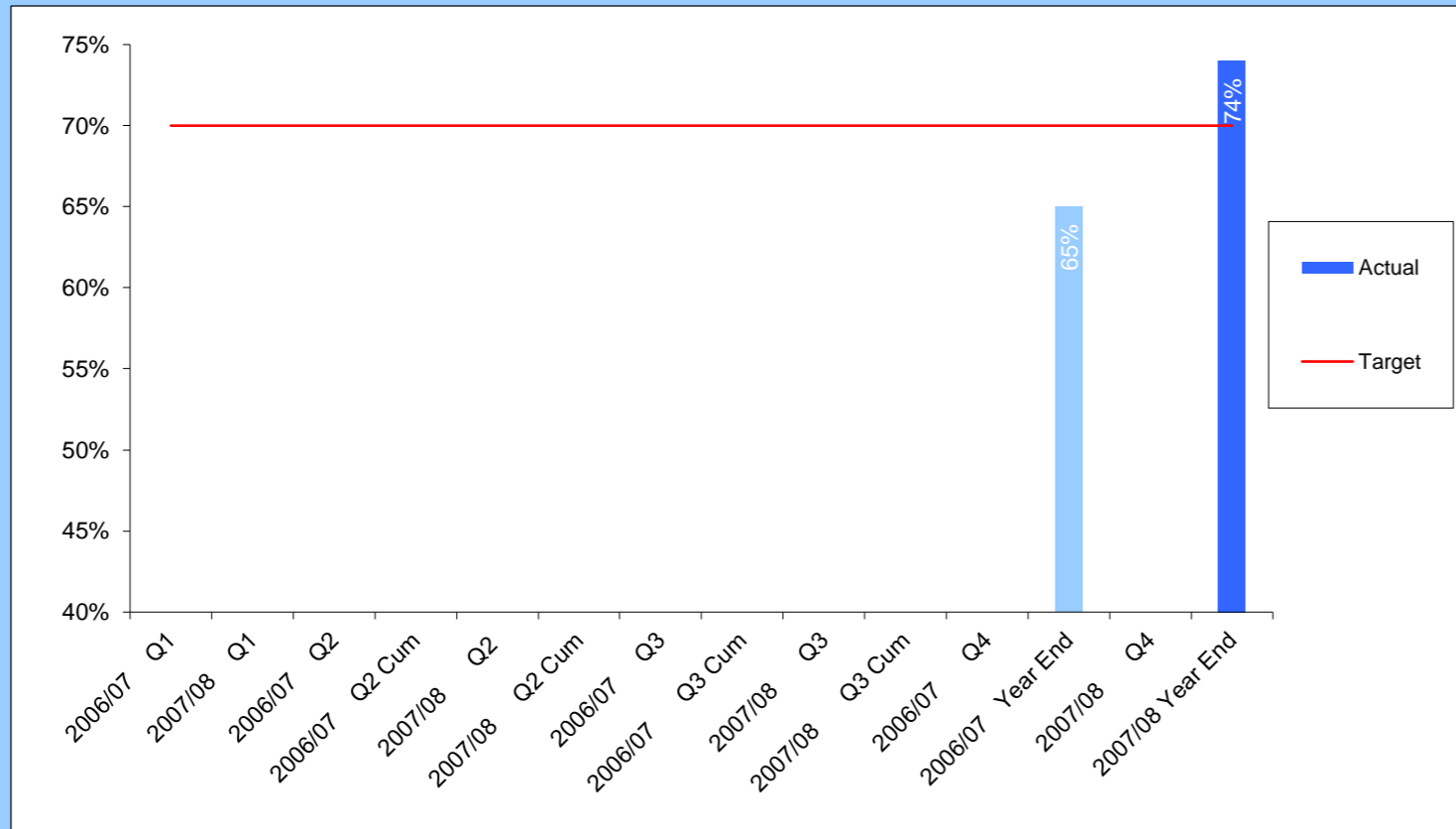
Within Tolerance

Quartiles: 1st = Top; 4th = Bottom

Quarter 4 2007/08

CYP012
(Ch036)

Percentage of vulnerable young people of school leaving age between June 2004 & June 2007 engaged in education, training or employment in any week in November 2007.



Performance Comparisons



2007/8 SBC Target 70%

Tolerance 2%

Polarity ↑

Target

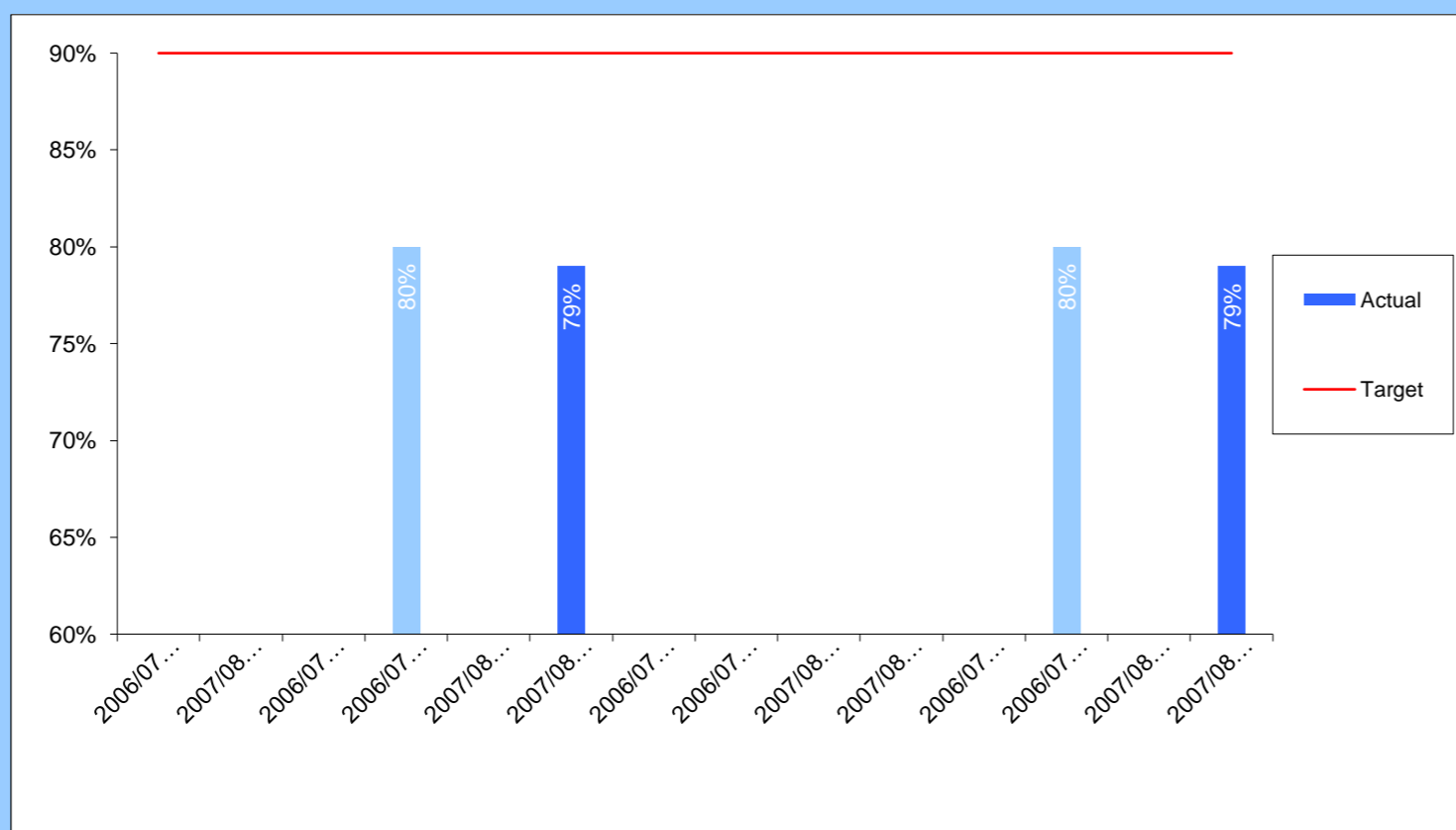


Comments: Effective targeting of support and monitoring of the young people's progress helped to ensure this LPSA target was achieved.

Head of Service: Jane Humphreys (52)7053

CYP013
(Ch039)

Percentage of 12-16 year olds in secondary schools participating in an average of 2 hours high quality PE and school sport per week



Performance Comparisons



2007/8 SBC Target 90%

Tolerance 2%

Polarity ↑

Target



Comments: The LPSA target of 90% was not achieved by July 2007. Not all secondary schools had been able to adopt the necessary timetabling changes by the end of the period concerned, although further progress has been made during the current 07-08 school year.

Head of Service: Julia Morrison (52)7041



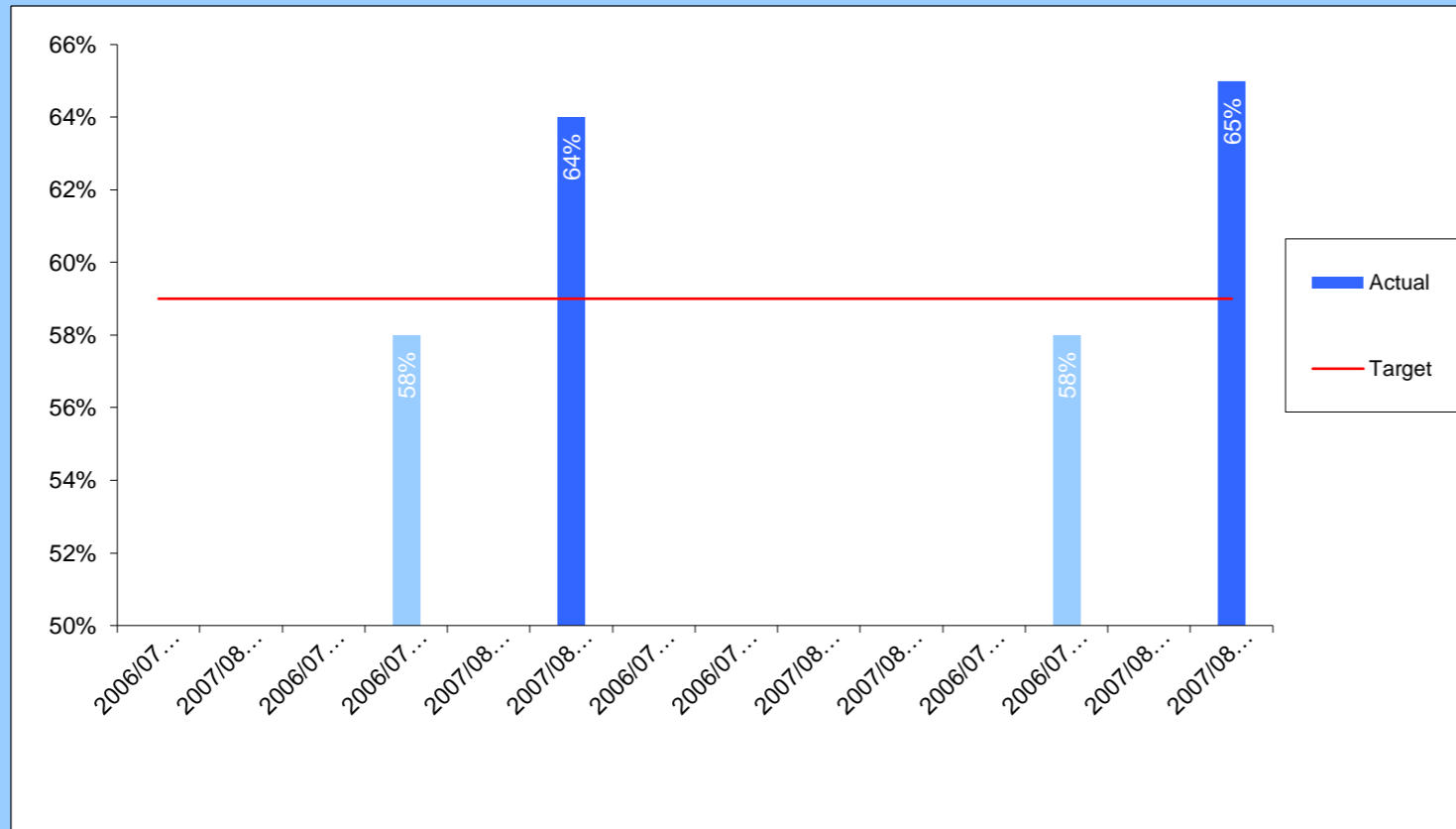
Children & Young People Key Performance Indicators

★ Achieved Target ■ Missed Target
○ Within Tolerance Quartiles: 1st = Top; 4th = Bottom

Quarter 4 2007/08

CYP014
(Ch041)

Foundation Stage national expectation for achievement in the Early Learning goals



Performance Comparisons

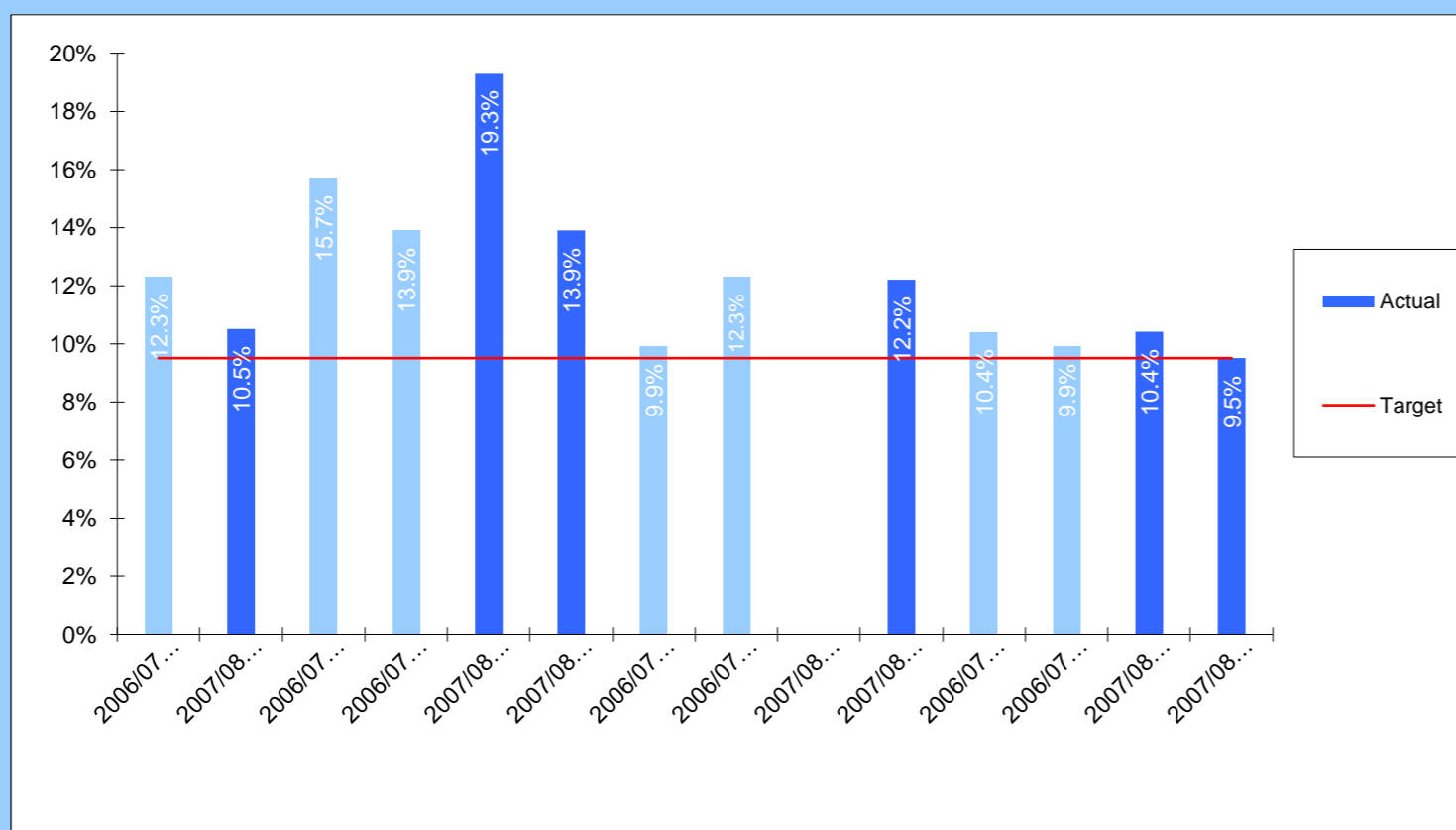
↑
 2007/8 SBC Target 59%
 Tolerance 2%
 Polarity ↑
 Target
★

Comments: 2007 results represented a significant rate of improvement on 2006, and were significantly higher than the national average.

Head of Service: Julia Morrison (52)7041

CYP015
(Ch042)

Percentage of 16-18 year olds not in employment, education or training (NEET)



Performance Comparisons

↑
 2007/8 SBC Target 9.5%
 Tolerance 2%
 Polarity ↓
 Target
★

Comments: The year end figure represents the average for the three months Nov-Jan, in line with the PSA definition. Performance has improved in line with target. Data here refers to performance based on students whose place of learning was in Stockton, as this is the basis on which performance is now reported nationally; however, our local target was agreed with Government Office based on students who are resident in Stockton. Performance based on residency was: Q4 9.9% (Q4 Cumulative 9.0%).

Head of Service: Jane Humphreys (52)7053



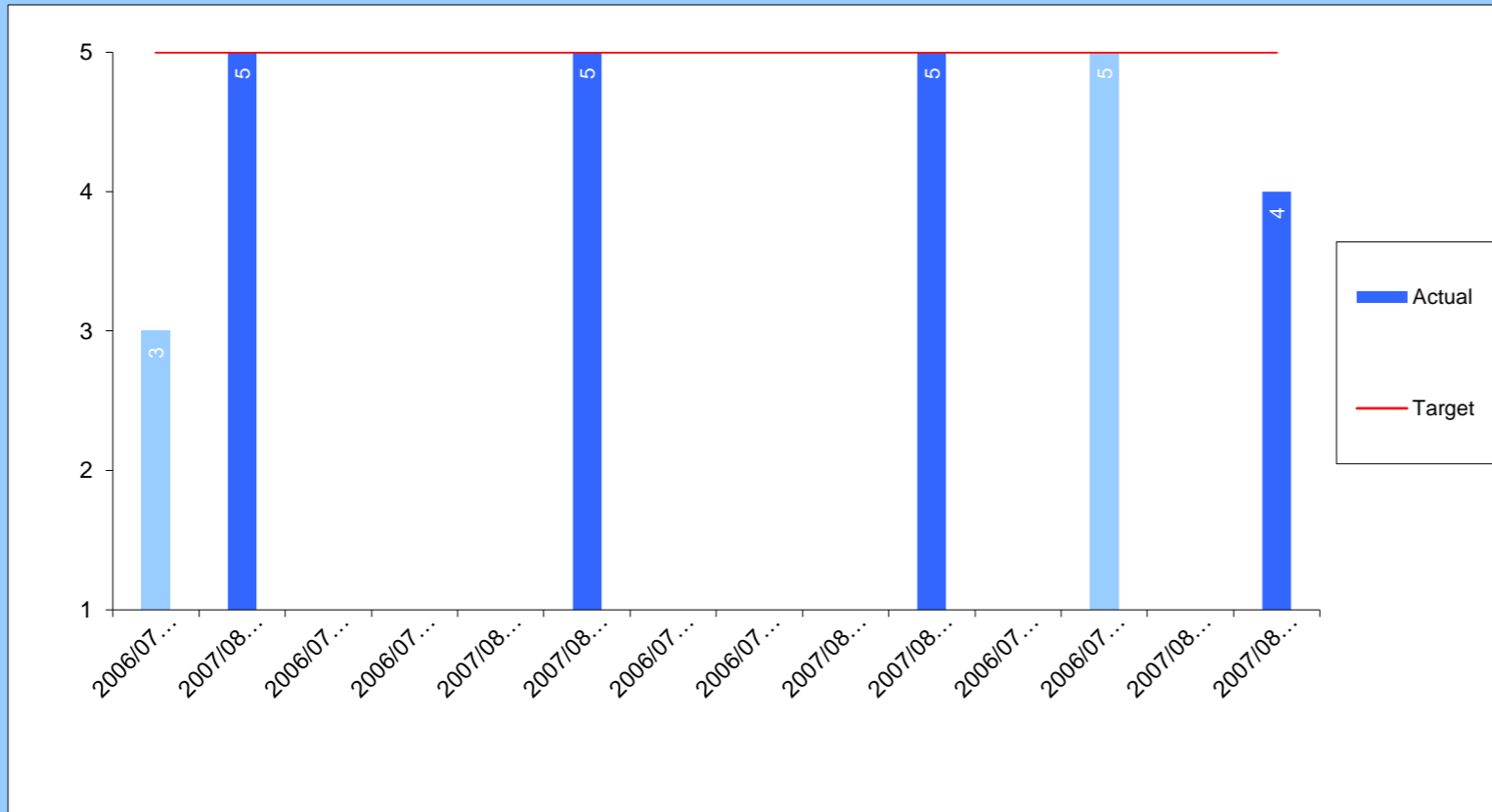
Children & Young People Key Performance Indicators

★ Achieved Target ■ Missed Target
○ Within Tolerance Quarters: 1st = Top; 4th = Bottom

Quarter 4 2007/08

CYP016
(Ch043)

Youth Offending Service - Overall performance level within national YOS performance framework



Performance Comparisons

↓

2007/8 SBC Target 5

Tolerance 2%

Polarity ↑

Target

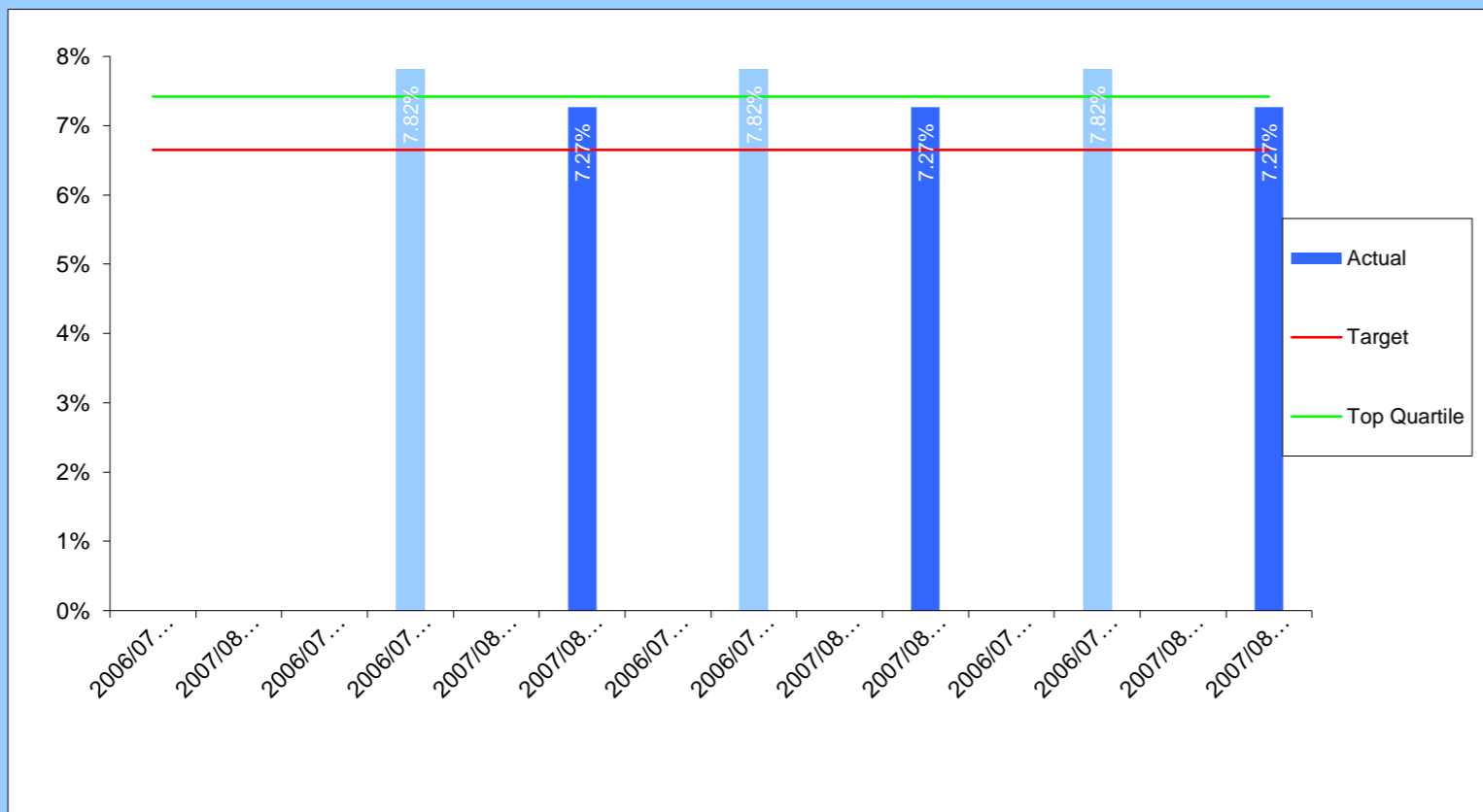
○

Comments: End of year data was not available until June, so Q3 would have been 4 not 5. The reduction in level arose primarily from a slight drop in scores relating to the national standards for the level and frequency of contact with offenders.

Head of Service: Jane Humphreys (52)7053

CYP018
(BV45)

Pupil absence from schools: percentage of half days missed - secondary



Performance Comparisons

↑

2006/7 Top Quartile 7.42%

2007/8 SBC Target 6.65%

Improvement

Polarity ↓

Target

○

Comments: Performance (school year 2006-07) improved and was close to the targeted level. DCSF published absence data shows that a relatively strong rate of improvement from the previous year has resulted in performance above both national and statistical neighbour averages.

Head of Service: Julia Morrison (52)7041



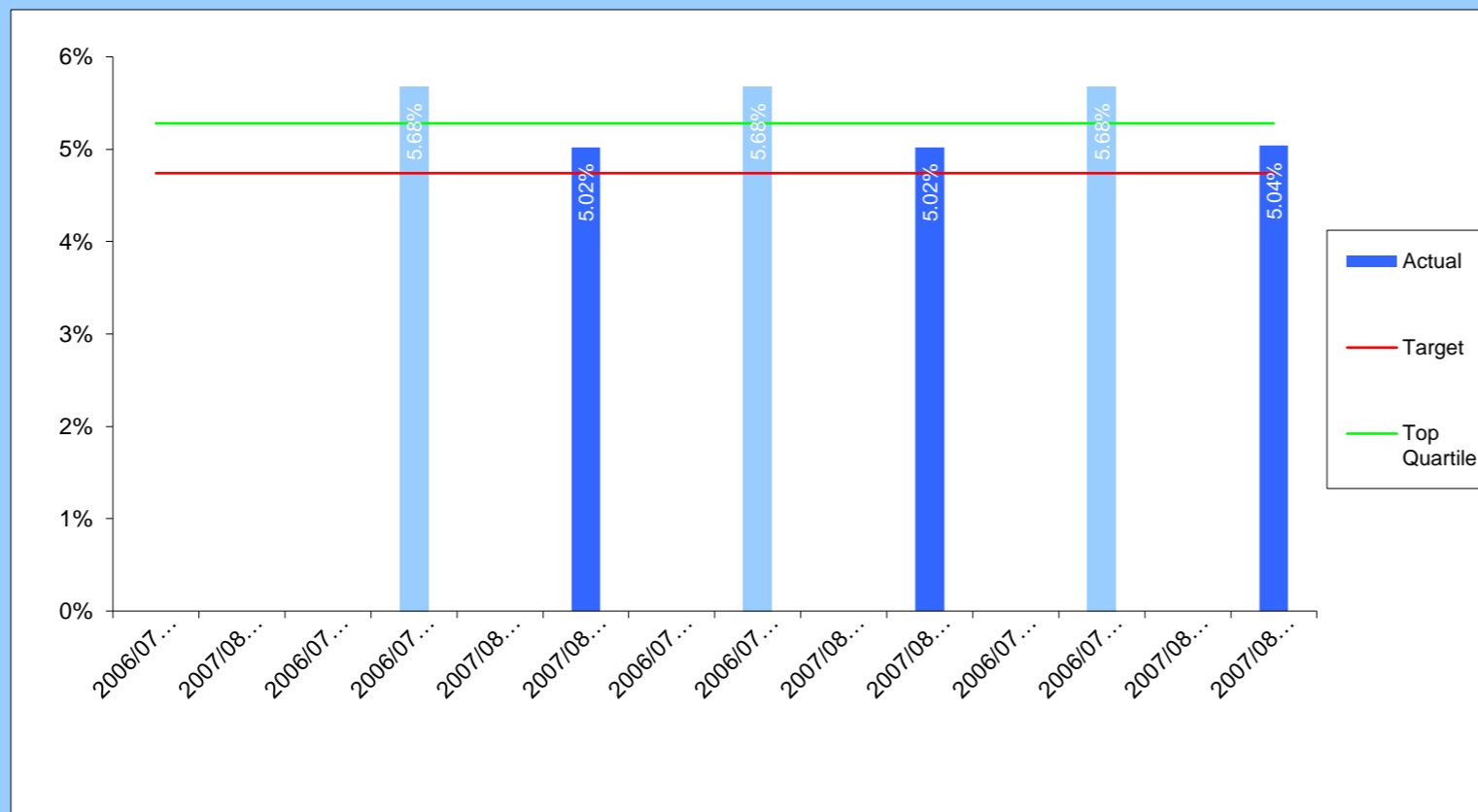
Children & Young People Key Performance Indicators

★ Achieved Target ■ Missed Target
○ Within Tolerance Quarters: 1st = Top; 4th = Bottom

Quarter 4 2007/08

CYP019
(BV46)

Pupil absence from schools: percentage of half days missed - primary



Performance Comparisons

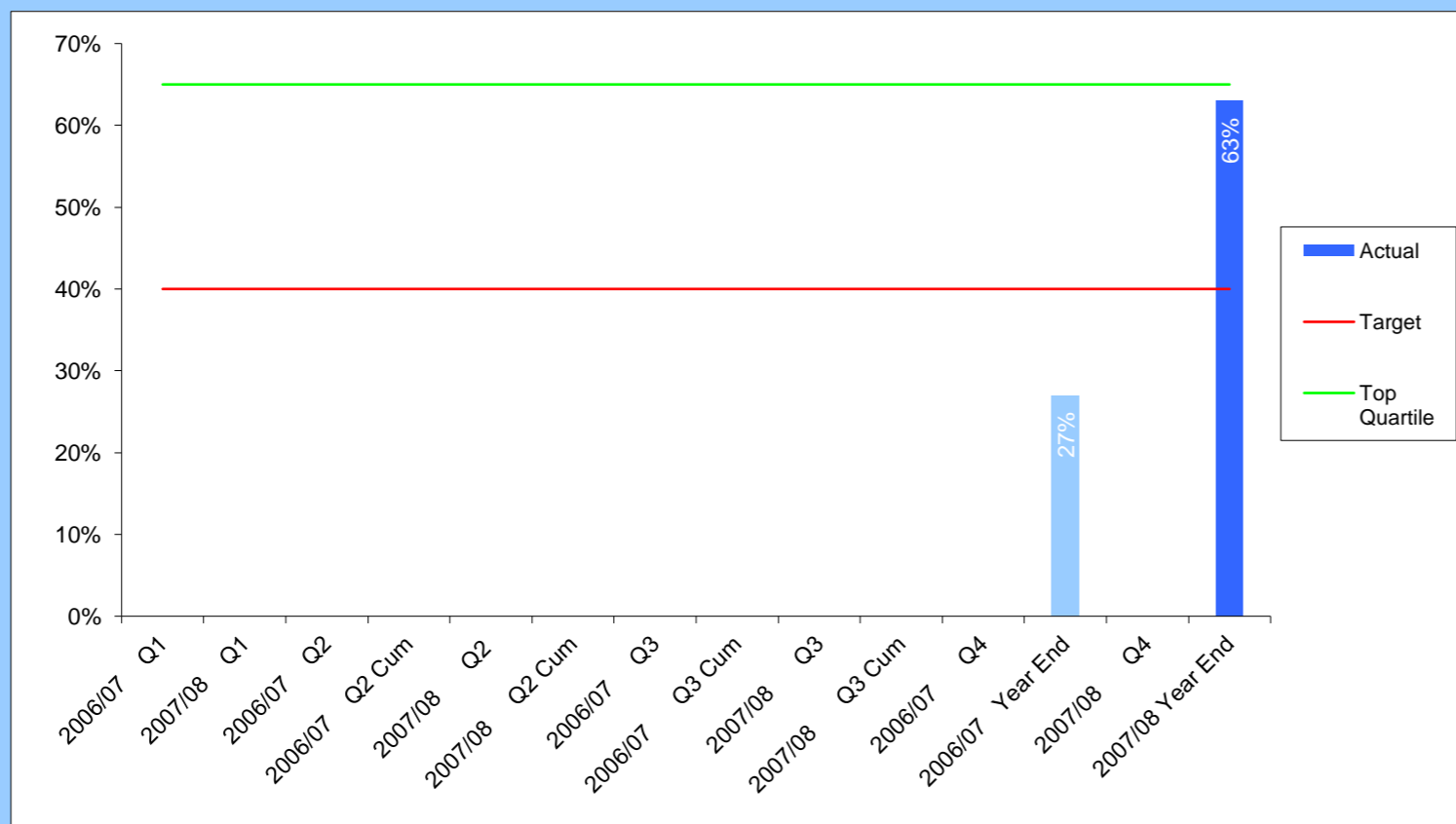
↑
 2006/7 Top Quartile 5.28%
 2007/8 SBC Target 4.74%
 Improvement
 Polarity ↓
 Target
○

Comments: Performance (school year 2006-07) improved and was close to the targeted level. DCSF published absence data shows that a relatively strong rate of improvement from the previous year has resulted in performance above both national and statistical neighbour averages.

Head of Service: Julia Morrison (52)7041

CYP020
(BV221a)

Percentage of young people aged 13-19 involved in youth work gaining a recorded outcome compared to the percentage of young people in the Local Authority area



Performance Comparisons

↑
 2006/07 Top Quartile 65%
 2007/8 SBC Target 40%
 Improvement
 Polarity ↑
 Target
★

Comments: A very significant increase in performance reflects revised curriculum arrangements within the Youth Service, focused on young people's engagement in purposeful learning rather than just participation. The quality of the Youth Service's curriculum framework was identified as good practice in the 2007 inspection, linked to the JAR (Joint Area Review). The year end achievement is close to last year's top quartile performance.

Head of Service: Jane Humphreys (52)7053



Children & Young People Key Performance Indicators



Achieved Target



Missed Target



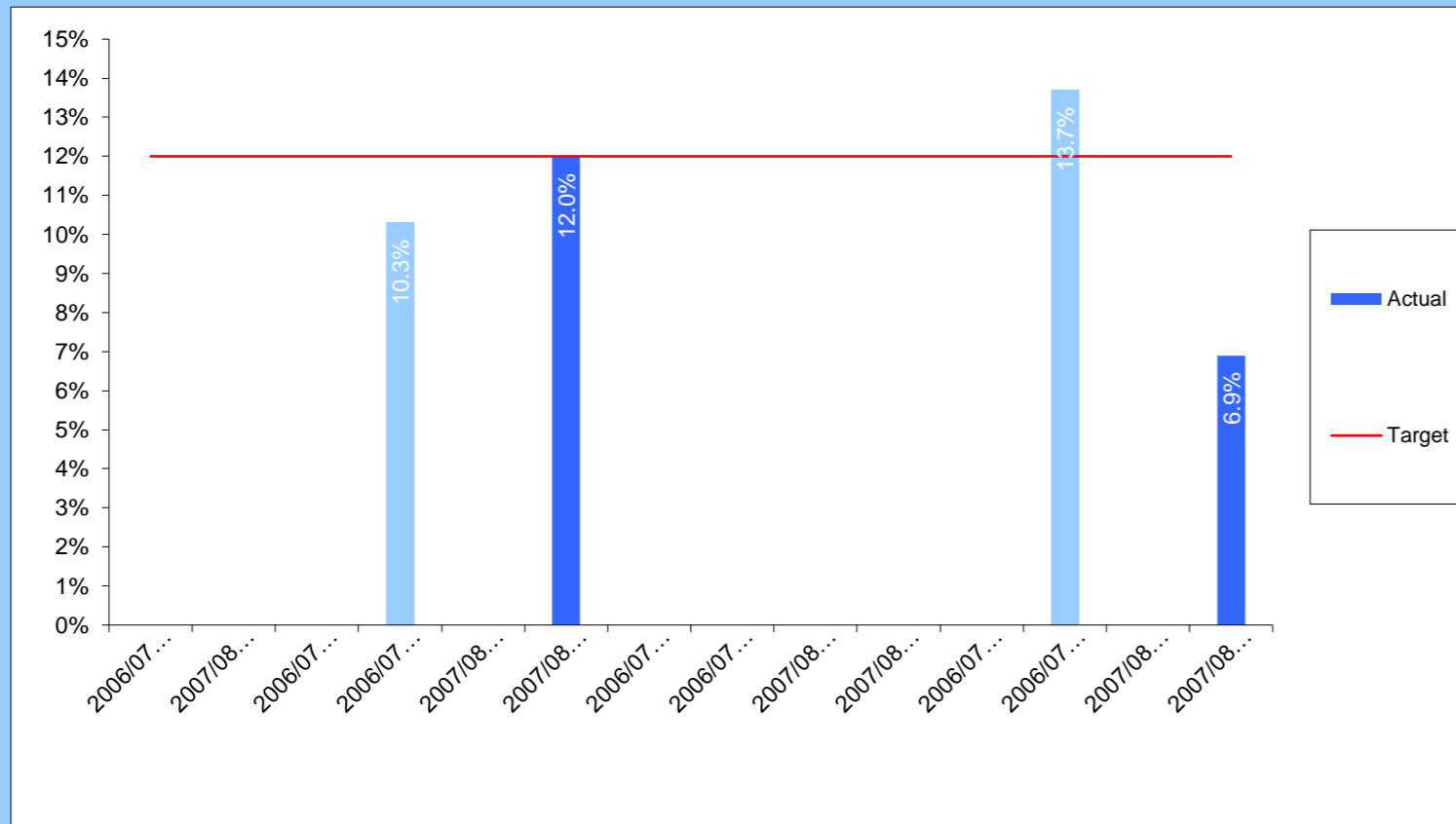
Within Tolerance

Quartiles: 1st = Top; 4th = Bottom

Quarter 4 2007/08

CYP021
(BV163)

Number of children who ceased to be looked after during the year (adoptions/special guardianship order)



Performance Comparisons



2007/8 SBC Target 12.0%

No Tolerance

Polarity ↑

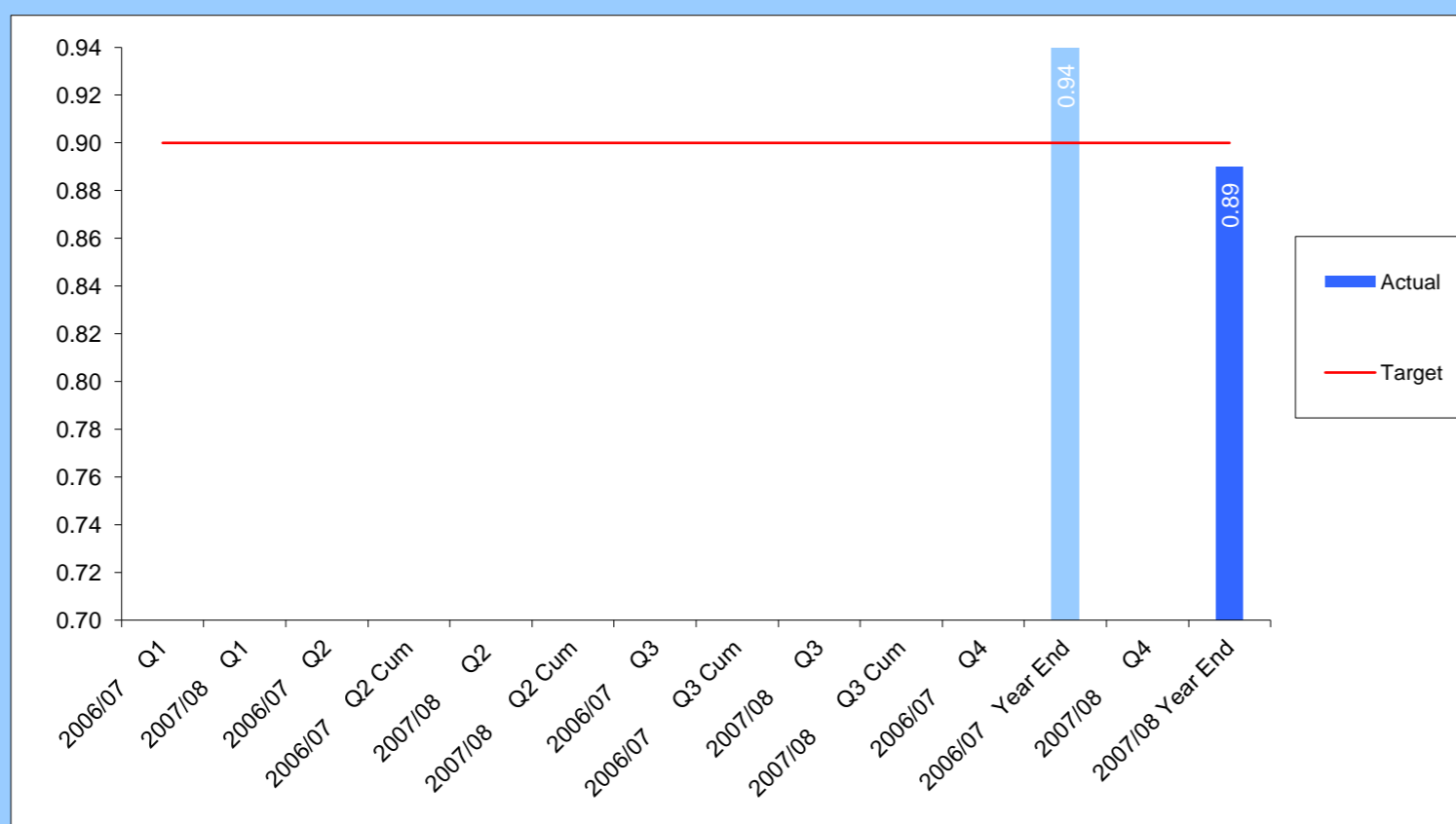
Target



Comments: This is an indicator which is subject to some fluctuation annually, linked to the small number of cases involved and to some factors which it is difficult for the Council to influence such as court delays. In-year monitoring had suggested that there would be a fall-off in performance by the year end, partly arising from court delays and partly from some difficulties in securing placements outside the Council.
Head of Service: Jane Humphreys (52)7053

CYP022
(BV161)

The ratio of care leavers aged 19 that are engaged in employment, education and training against all 19 year olds that are engaged in employment, education and training



Performance Comparisons



2007/8 SBC Target 0.90

Improvement

Polarity ↑

Target



Comments: Performance in this indicator is subject to some fluctuation annually, depending on the particular needs of the relatively small number of care leavers in the cohort each year. For this period, 13 of 19 care leavers were EET. One more in EET, i.e. 14 of 19, would have resulted in a ratio of 0.96, better than the targeted measure.
Head of Service: Jane Humphreys (52)7053



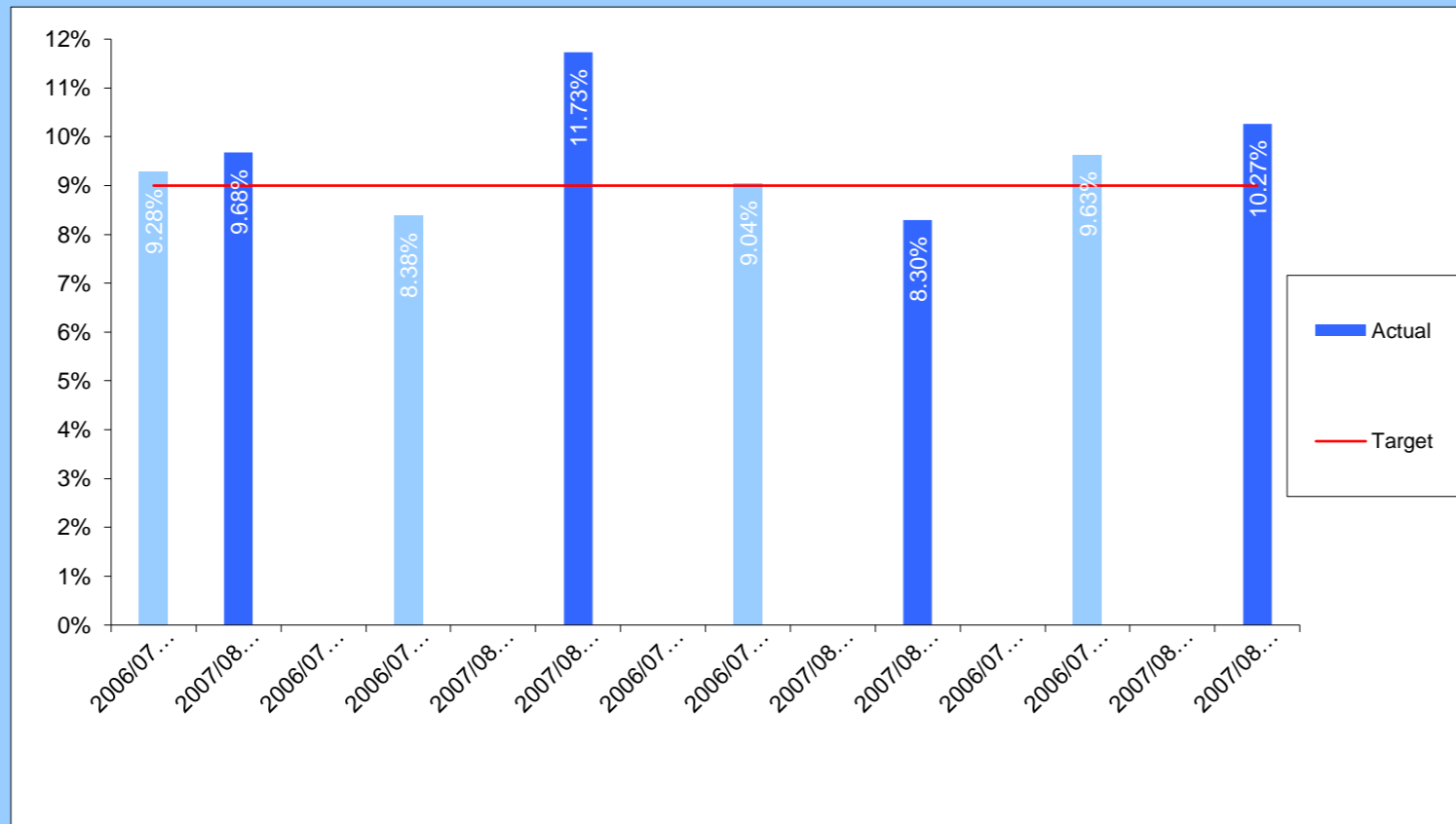
Children & Young People Key Performance Indicators

★ Achieved Target ■ Missed Target
○ Within Tolerance Quarters: 1st = Top; 4th = Bottom

Quarter 4 2007/08

CYP023
(BV49)

Percentage of looked after children at 31st March with 3 or more placements during the last financial year



Performance Comparisons

↓

2007/8 SBC Target 9.00%

Bandings

Polarity ↓

Target

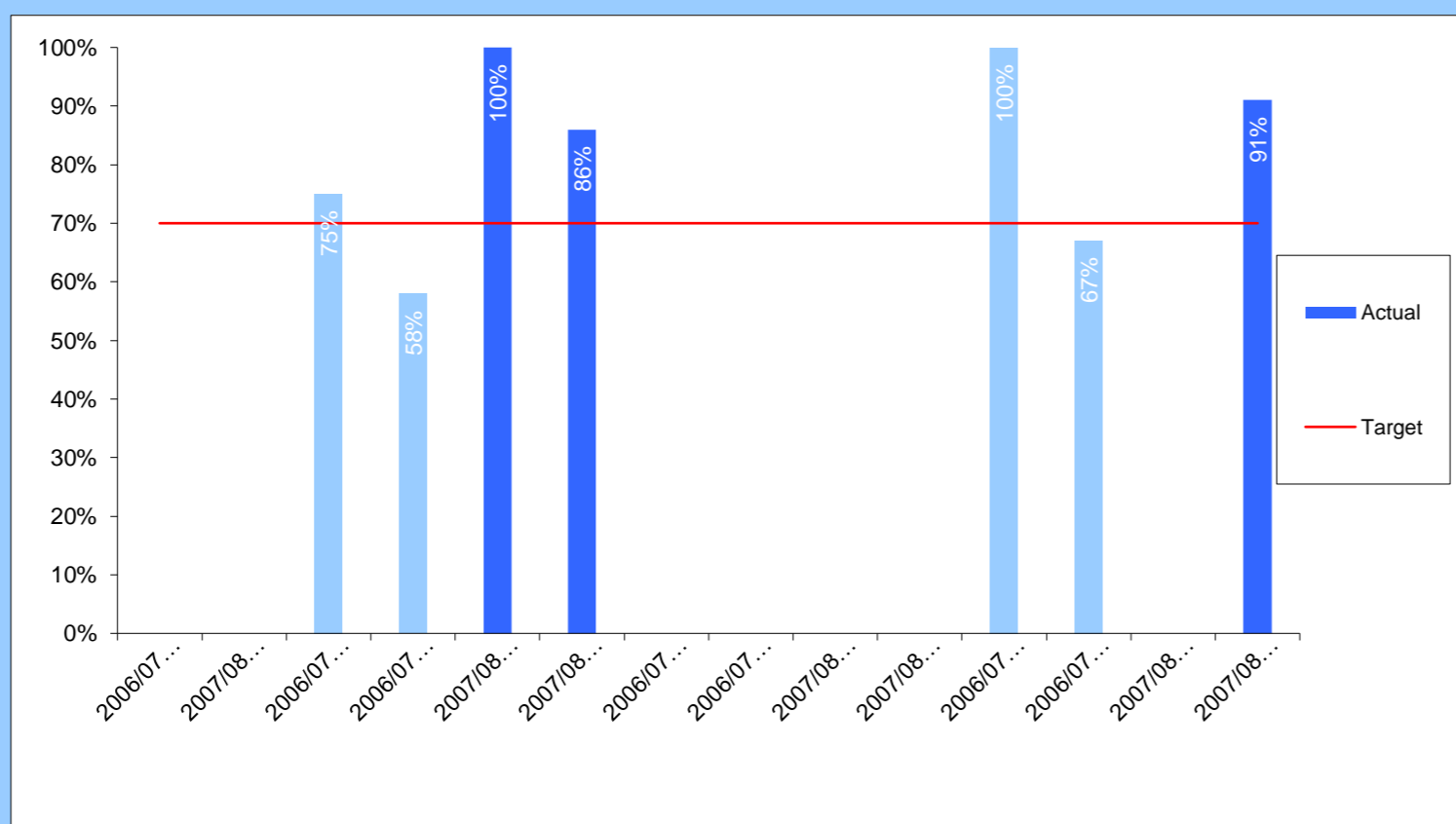
○

Comments: Although slightly down on 06-07, performance for 07-08 was close to target. The year end percentage still represents a good level of performance compared to past national and statistical neighbour averages, and reflects a consistent trend of top banded performance over recent years.

Head of Service: Jane Humphreys (52)7053

CYP024
(BV50)

Percentage of care leavers aged 16 or above with at least 1 GCSE at grade A*-G or a GNVQ



Performance Comparisons

↑

2007/8 SBC Target 70%

Bandings

Polarity ↑

Target

★

Comments: Annual fluctuations in performance arise from the small cohorts involved. 07-08 performance reflects 10 of 11 care leavers meeting the criteria, better than the expected level.

Head of Service: Jane Humphreys (52)7053



Children & Young People Key Performance Indicators



Achieved Target



Missed Target



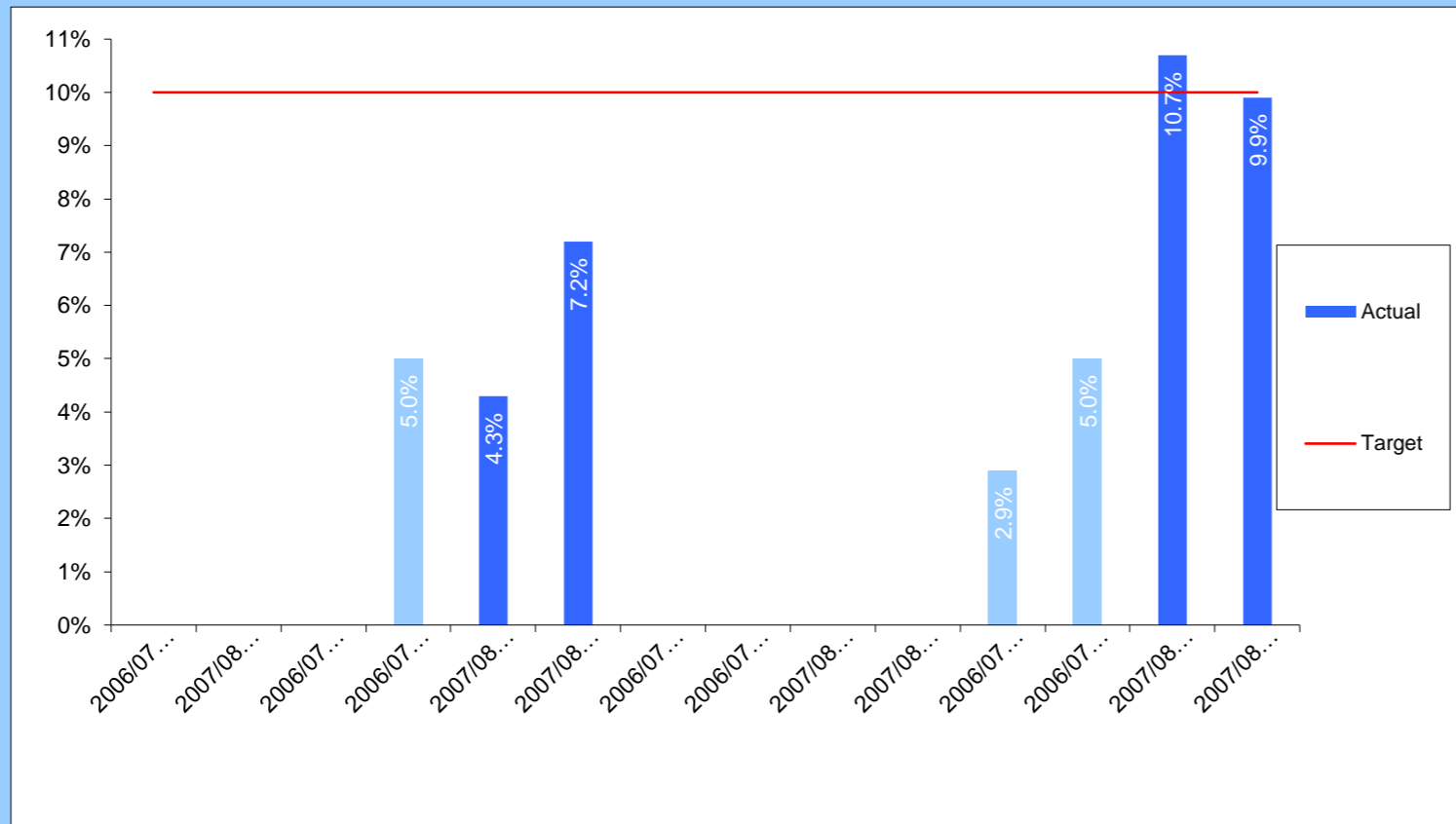
Within Tolerance

Quartiles: 1st = Top; 4th = Bottom

Quarter 4 2007/08

CYP025
(PAF A3)

Percentage of children registered during the year on the child protection register who had been previously registered



Performance Comparisons



2007/8 SBC Target 10.0%

Bandings

Polarity ↓

Target

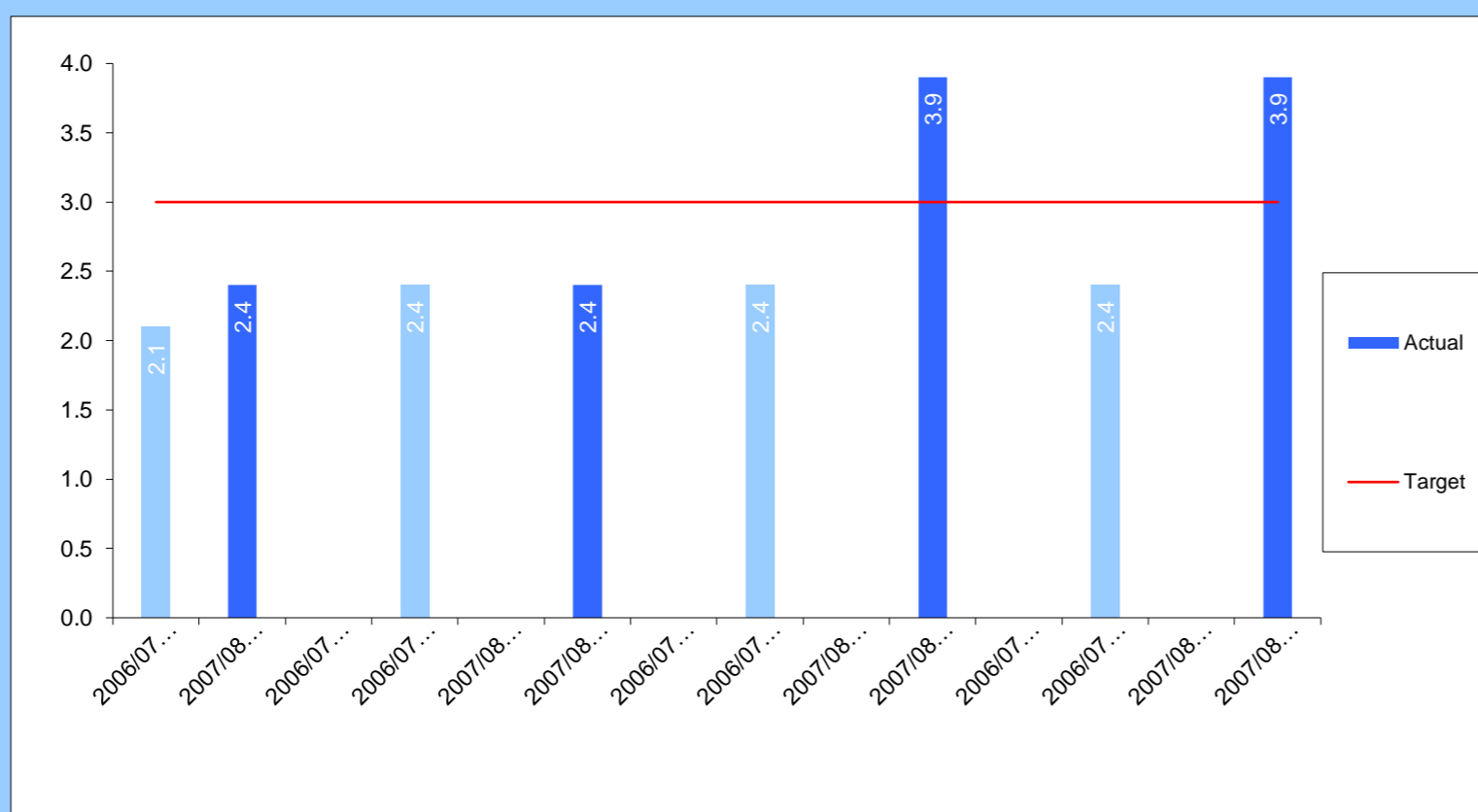


Comments: The year end figure represents top banded performance within the national inspection framework, meaning that the proportion of children with a child protection plan, who had previously been the subject of a CP plan, is in line with a level which reflects effective practice and procedures.

Head of Service: Jane Humphreys (52)7053

CYP026
(PAF C81)

Final warnings / reprimands and convictions of looked after children



Performance Comparisons



2007/8 SBC Target 3.0

Bandings

Polarity ↓

Target



Comments: End of year performance is as reported in the national data return, and shows that the proportion of looked after children receiving a final warning / reprimand / conviction is 3.9 times more than the proportion of all children receiving a final warning / reprimand / conviction. The target has not been achieved. Addressing this area of performance is a high priority within the Children & Young People's Plan, and in the Youth Justice Plan, with improvement targeted currently through joint work within the Youth Offending Service and a voluntary sector provider.

Head of Service: Jane Humphreys (52)7053



Children & Young People Key Performance Indicators



Achieved Target



Missed Target



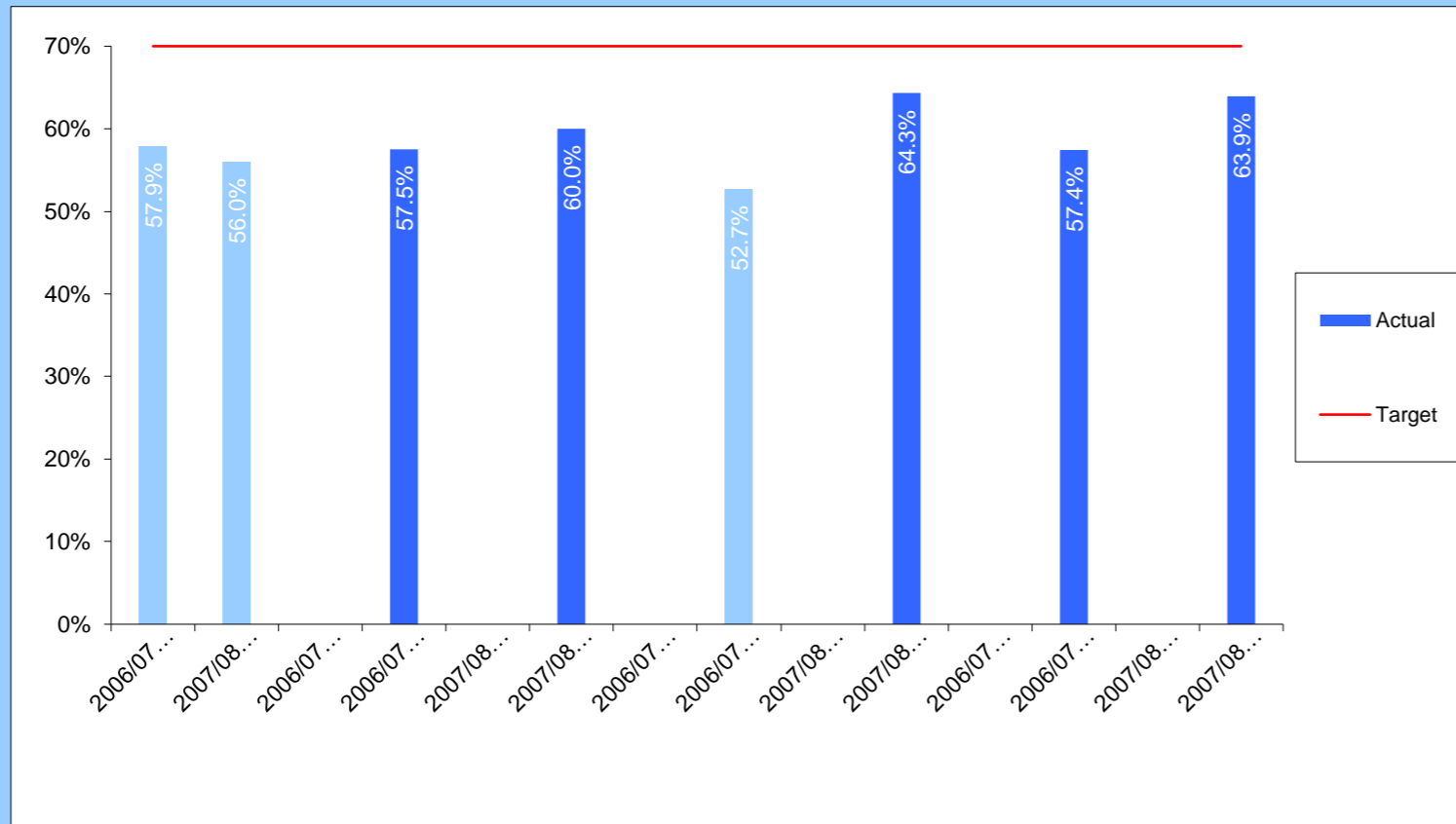
Within Tolerance

Quartiles: 1st = Top; 4th = Bottom

Quarter 4 2007/08

CYP027
(PAF D78)

Percentage of children under 16 in care for 2.5+ years living in same placement for at least 2 years



Performance Comparisons



2007/8 SBC Target 70.0%

Bandings

Polarity ↑

Target

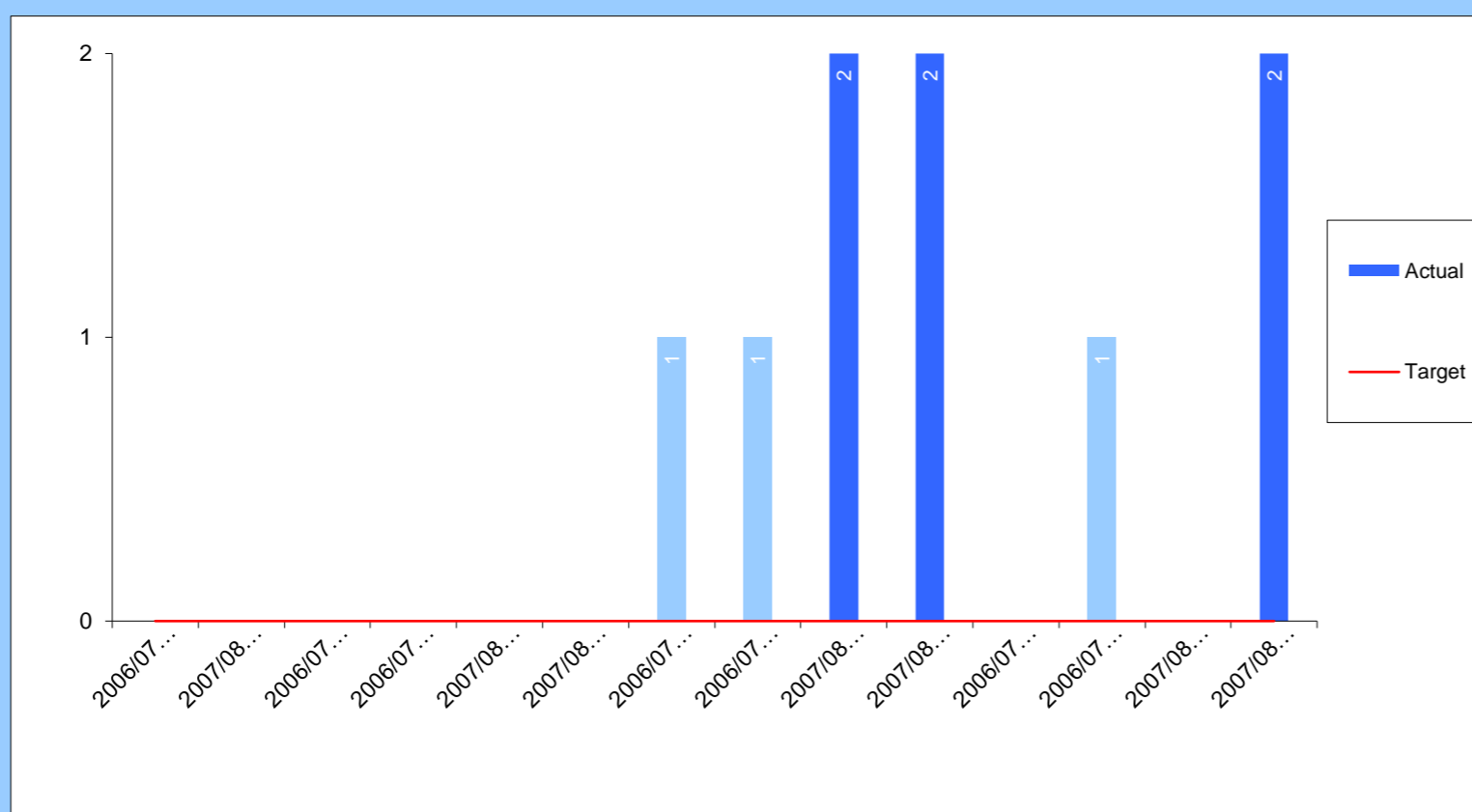


Comments: Year end performance, although falling short of the ambitious national PSA target level, represents very good improvement on the 06-07 position and should bring performance more in line with national and statistical neighbour averages.

Head of Service: Jane Humphreys (52)7053

CYP028
(Ch040)

Number of local authority SRAS schools (Schools Requiring Additional Support) which move to an OFSTED designation



Performance Comparisons



2007/8 SBC Target 0

Bandings

Polarity ↓

Target



Comments: No schools moved into an Ofsted designation during Q4, with the year end figure representing the two schools which moved into a designation following Ofsted inspections in the autumn term 2007. These schools continue to be supported through the authority's intervention plans, as approved by Ofsted.

Head of Service: Julia Morrison (52)7041