



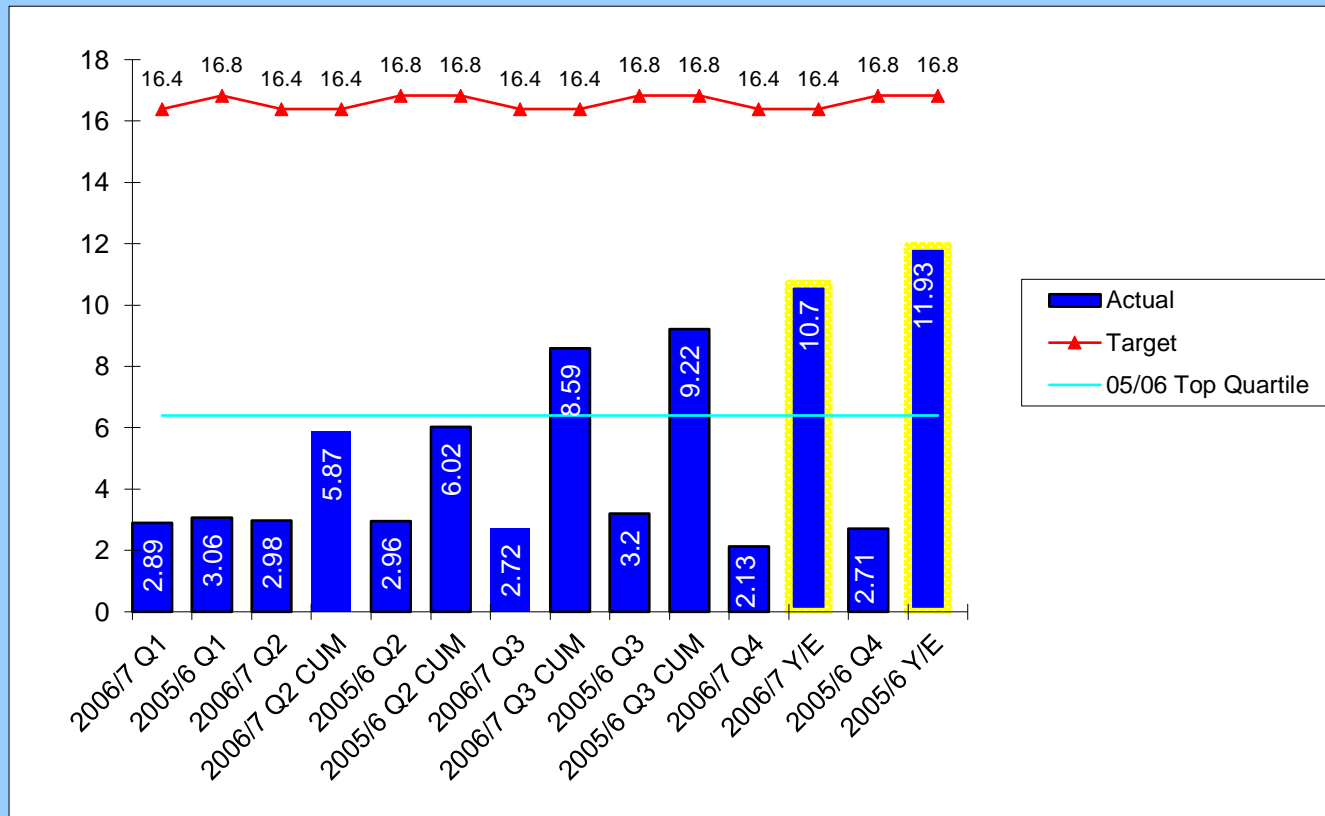
Community Safety Key Performance Indicators

★ Target achieved ■ Target not achieved

Quarter 4 2006/7

○ Within 2% of target Quartile position: 1st = best (top); 4th = worst

CS001 (BV 126) - domestic burglaries per 1,000 households



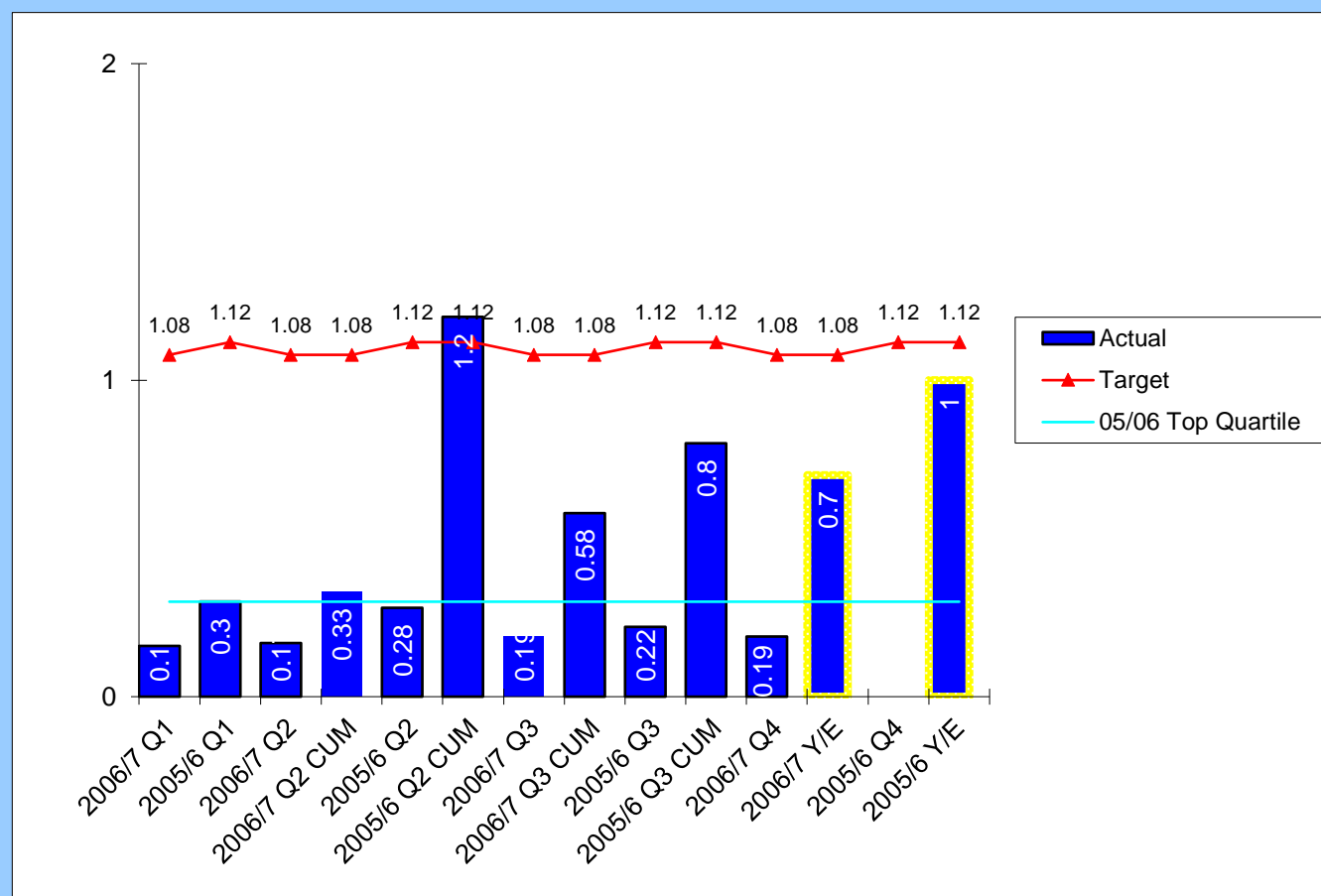
Performance Comparisons

↑
2005/6 Top Quartile 6.4 SBC 3rd Quartile
Target
★

Comments: Domestic burglary has been steadily reducing for the last 5 years and is now at the lowest level since records began. This is due to a number of initiatives including the vulnerable persons and repeat burglary scheme, where target hardening measures are installed to prevent burglary. In addition to this, the Priority Offender scheme, which involves intensively monitoring the most serious offenders and fast tracking them through the court system. Another successful initiative was Operation Crystal which used predictive analysis techniques to identify areas which were likely to become burglary hotspots and then monitoring them rigorously. The Crime Prevention team work intensively in these areas and extra patrols by Police Community Support Officers have been employed. Stockton Borough Council and Tristar were also heavily involved in this initiative.

Head of Service Contact Details: Mike Batty (52)7074

CS002 (BV 127b) - robberies per 1,000 population



Performance Comparisons

↑
2005/6 Top Quartile 0.3 SBC 3rd Quartile
Target
★

Comments: No 2005/6 Q4 standalone data. Robbery has been reducing for a number of years in the Stockton Borough. This is partly due to greater education (both nationally and locally) about not having personal items on display such as mobile phones and mp3 players when walking alone on the streets. The Police have also clamped down on false reporting of robbery for compensation purposes, using a range of measures such as the reviewing of CCTV to prove whether reported robberies are genuine.

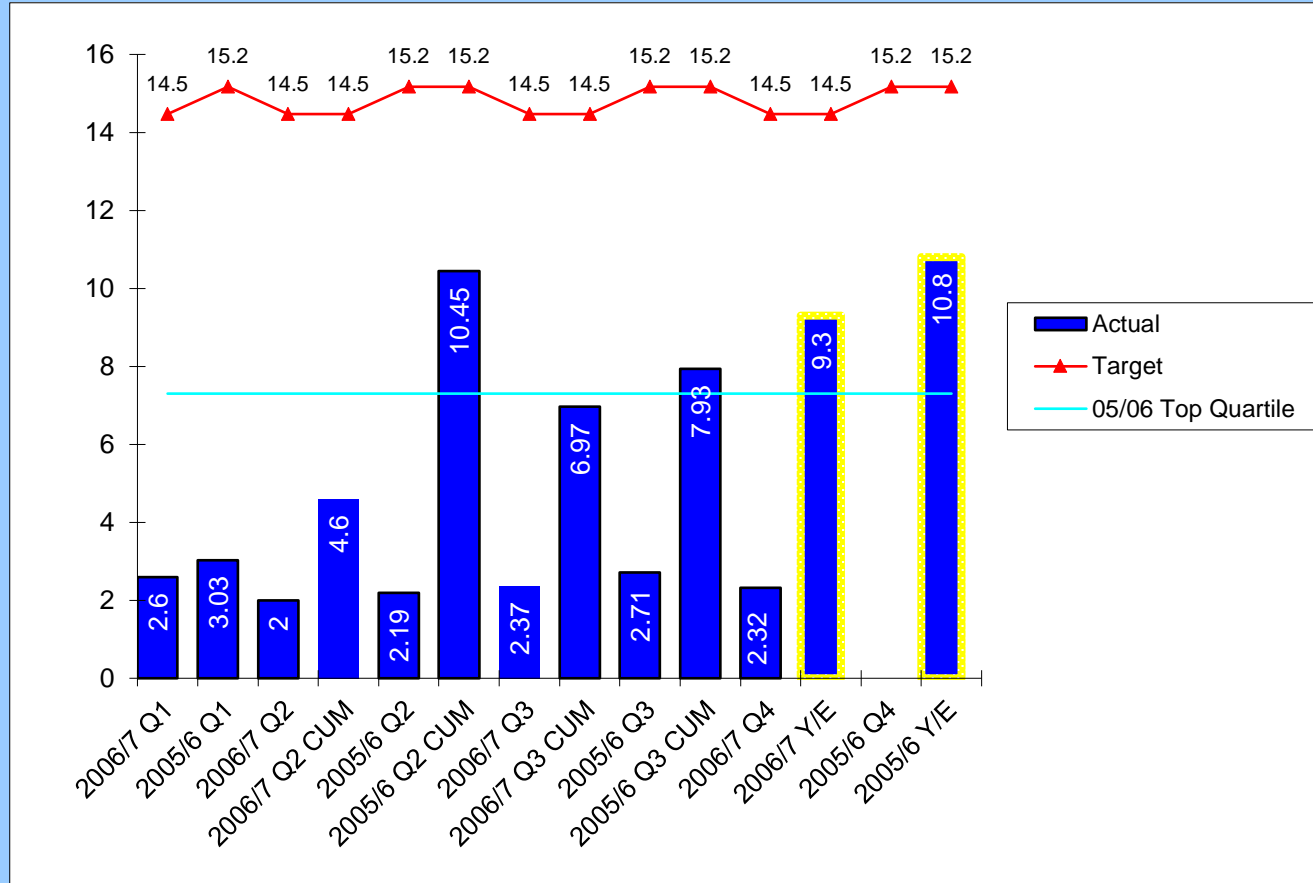
Head of Service Contact Details: Mike Batty (52)7074



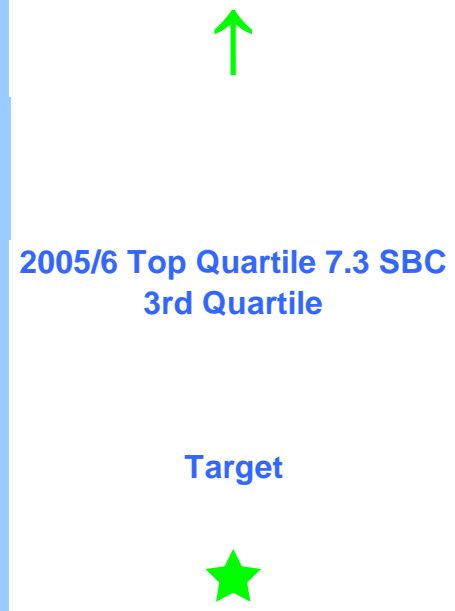
Community Safety Key Performance Indicators

Quarter 4 2006/7

CS003 (BV 128) - vehicle crimes per 1,000 population



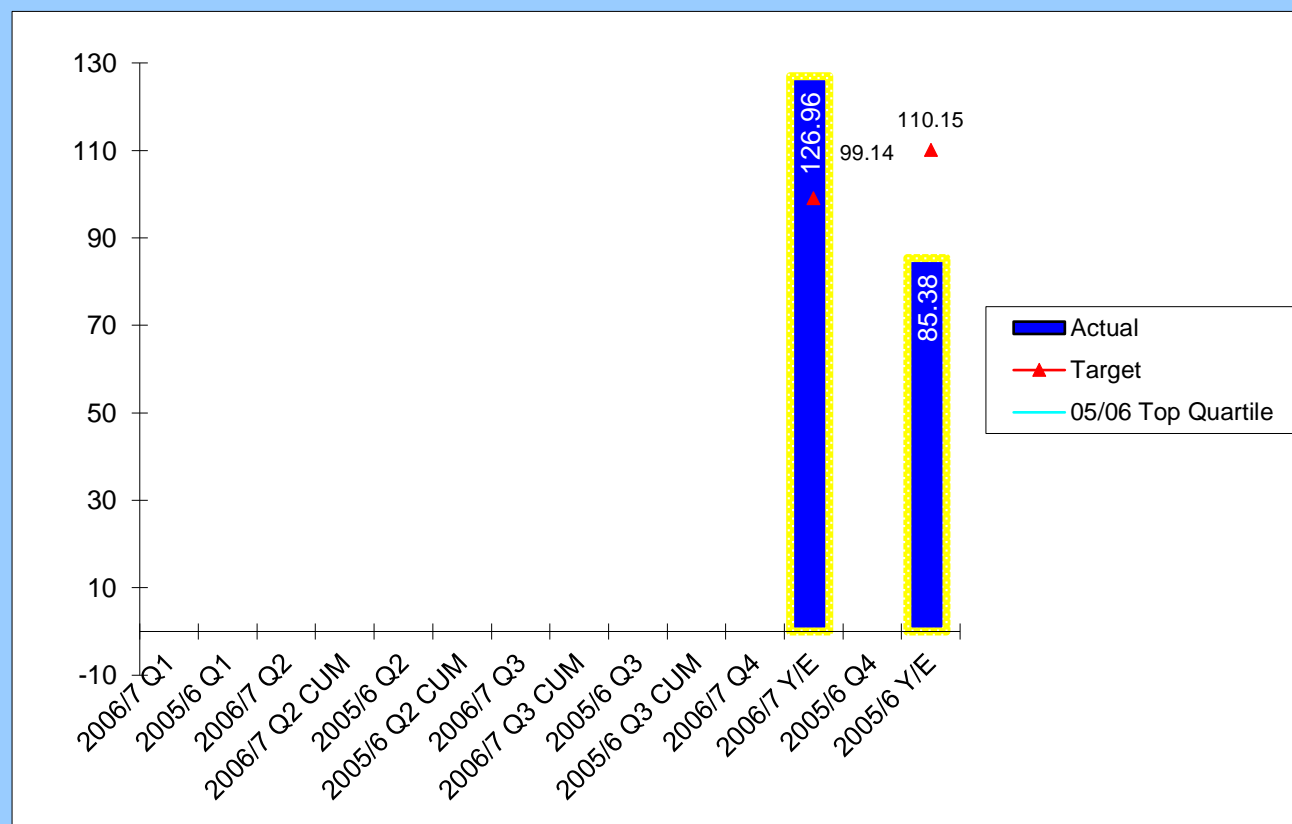
Performance Comparisons



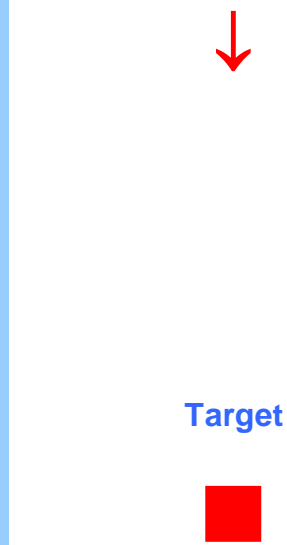
Comments: No 2005/6 Q4 standalone data. Vehicle crime has been tackled using a number of initiatives in 2006/07. These initiatives include continuing with the Park Mark award for secure car parks and a poster campaign about the dangers of leaving satellite navigation systems on display in parked cars. Since Stockton Council took over parking enforcement this year there has been a greater uniformed presence in car parks and on street parking sites, which has acted as a deterrent against vehicle crime.

N.B. The Q1, Q2, Q3 and Q4 stand alone figures do not quite add up to 9.30. This is due to a change in the population figure, provided by PPSU on 11th September 2007. Q1 was calculated using the current population figure at the time.
Head of Service Contact Details: Mike Batty (52)7074

CS004 (BV 174) - Racial incidents per 100,000 population



Performance Comparisons



Comments:

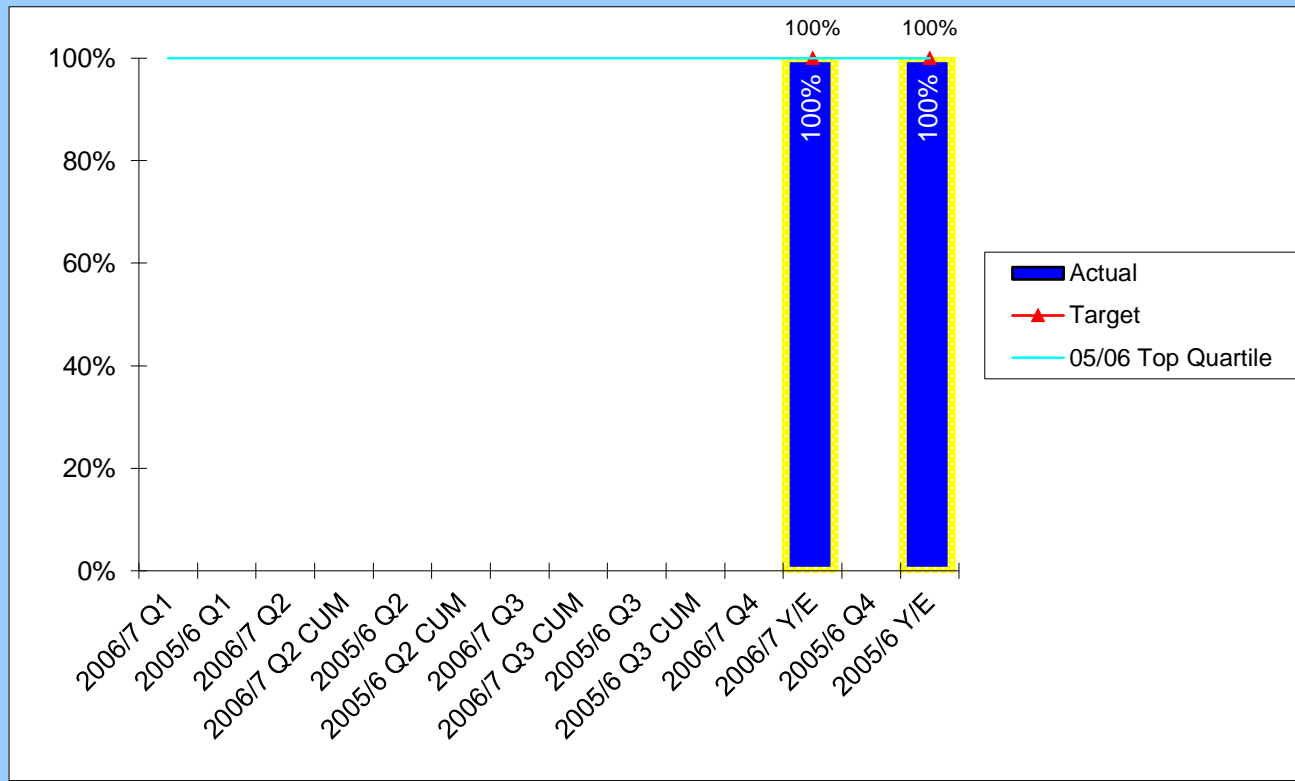
Head of Service Contact Details:



Community Safety Key Performance Indicators

Quarter 4 2006/7

CS005 (BV 175) - racial incidents resulting in further action



Performance Comparisons

↔

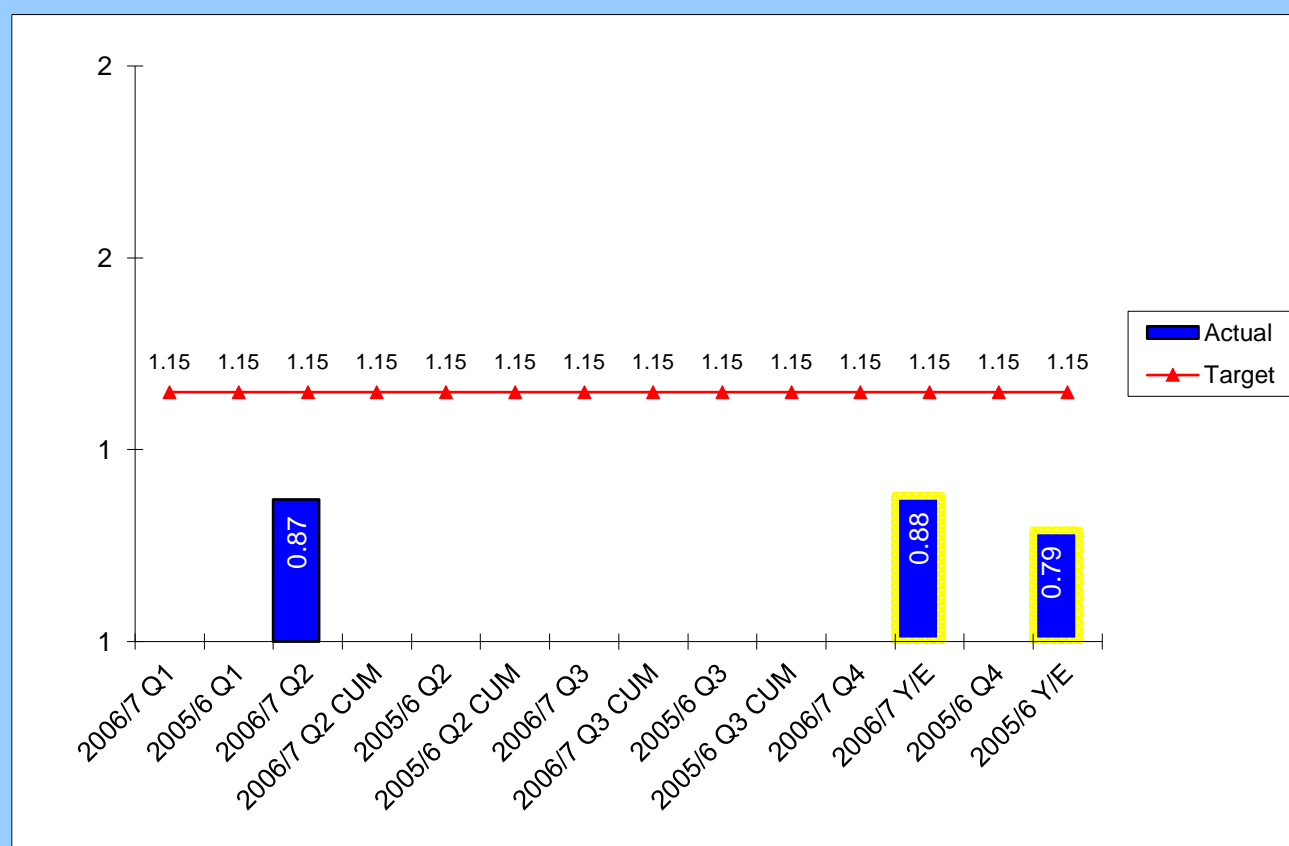
2005/6 Top Quartile 100%
SBC Top Quartile

★
Target

Comments:

Head of Service Contact Details:

CS006 (CS003) - The ratio of burglaries per 1,000 households between the Stockton rate and the CDRP partnership (LPSA 2004-07)



Performance Comparisons

↓

★
Target

Comments: When the target was set Stockton was performing 20% worse than the group average (ratio of 1.2:1 in 2003/4). The target was to reduce this gap to only 15% worse (ratio of 1.15:1). Cumulatively from April 2004 to March 2007, Stockton has actually performed no less than 12% better than the group average (ratio of 0.88:1). The improved performance is due to the success of the Community Safety Partnership and the actions put in place to meet the stretching targets set.

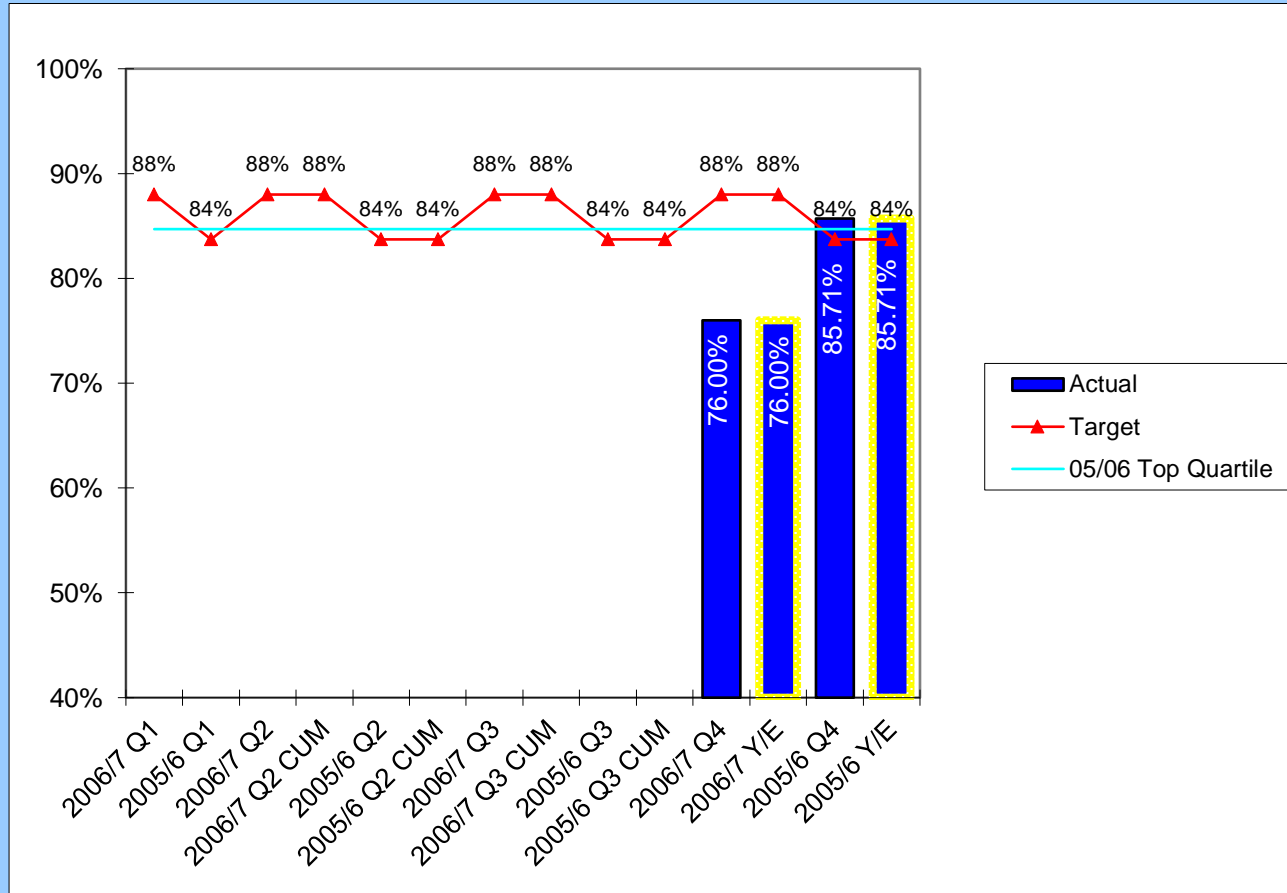
Head of Service Contact Details: Mike Batty (52)7074



Community Safety Key Performance Indicators

Quarter 4 2006/7

CS007 (BV156) - percentage of Council buildings with disabled public access



Performance Comparisons



2005/6 Top Quartile 84.7%
SBC Top Quartile

Target



Comments: The list of buildings has changed slightly from last year, which has had a negative effect on performance. New buildings have been added to the list which are not compliant, whilst some have been removed which were compliant.

Head of Service Contact Details: Mike Robinson (52)7028