



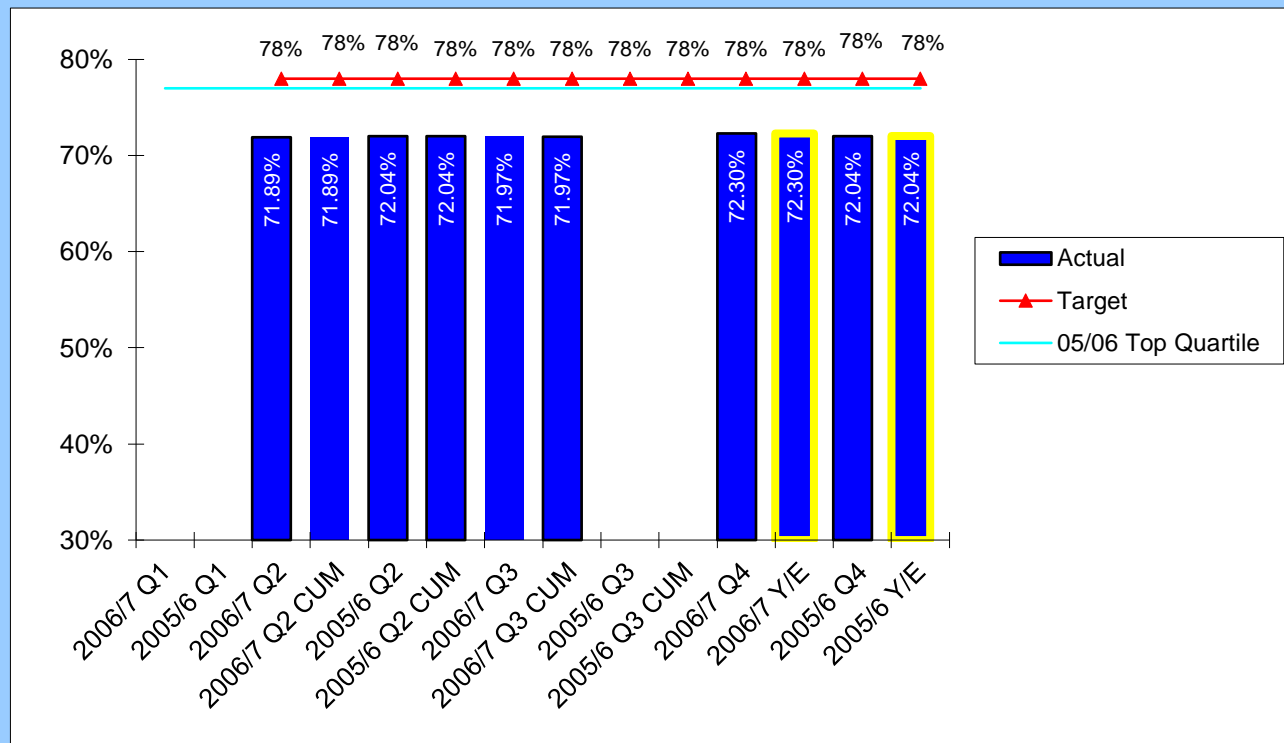
Children & Young People Key Performance Indicators

★ Target achieved ■ Target not achieved
○ Within 2% of target Quartile position: 1st = best (top); 4th = worst

Quarter 4 2006/7

CYP001 (BV 181a)

The percentage of 14 year old pupils schools achieving Level 5 or above at Key Stage 3 in English



Performance Comparisons

↔

2005/6 Top Quartile 77.0%
SBC 3rd Quartile

Target

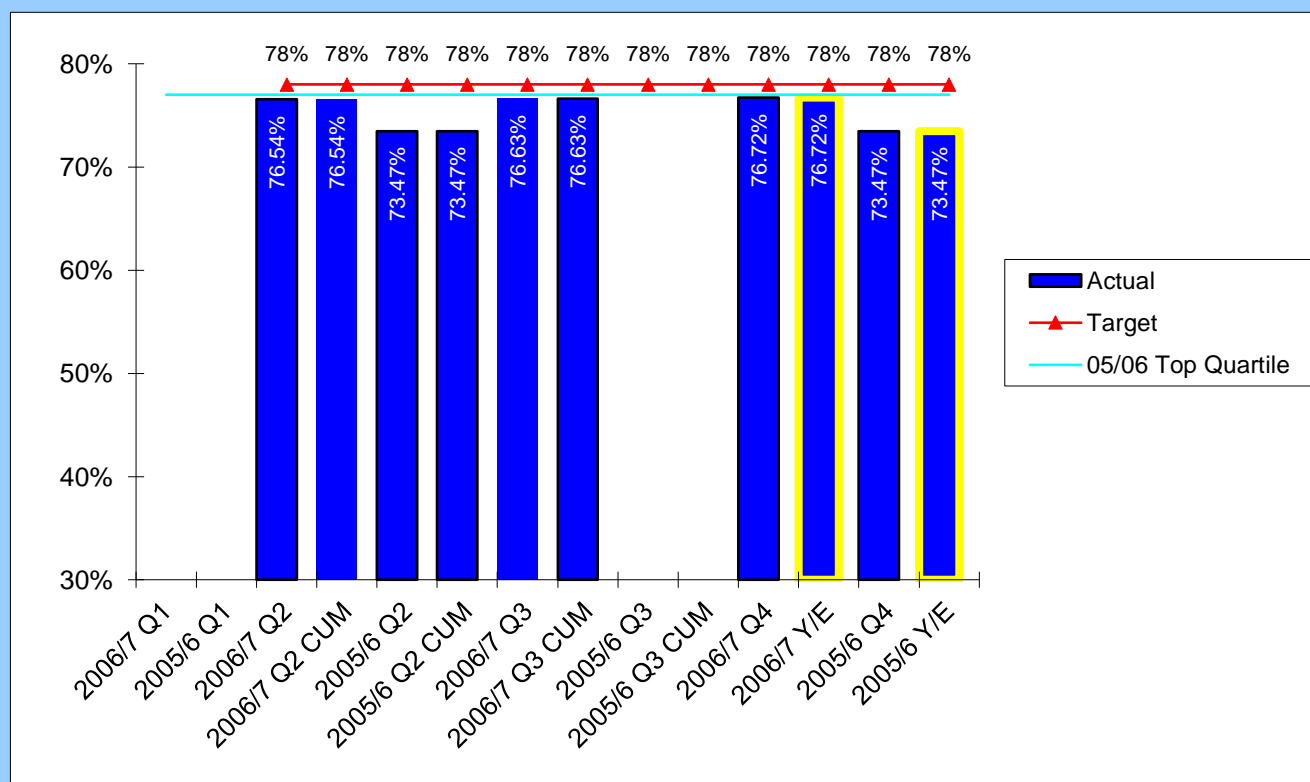
■

Comments: Reported data relates to results at the end of the 2005-06 school year. Performance in 2006, although below the aspirational national target, was very positive: it showed a slight improvement on 2005 results, compared to a national 2% drop in performance.

Head of Service Contact Details: Julia Morrison (52)7041

CYP002 (BV 181b)

The percentage of 14 year old pupils schools achieving Level 5 or above at Key Stage 3 in Maths



Performance Comparisons

↑

2005/6 Top Quartile 77.0%
SBC 3rd Quartile

Target

○

Comments: Reported data relates to results at the end of the 2005-06 school year. They are a good improvement on 2005, moving closer to the aspirational national target. They represent good value added progress, being better than the targets in the externally provided 'Family Fischer Trust' data which predicts outcomes for pupils taking account of prior attainment as well as contextual socio-economic factors.

Head of Service Contact Details: Julia Morrison (52)7041

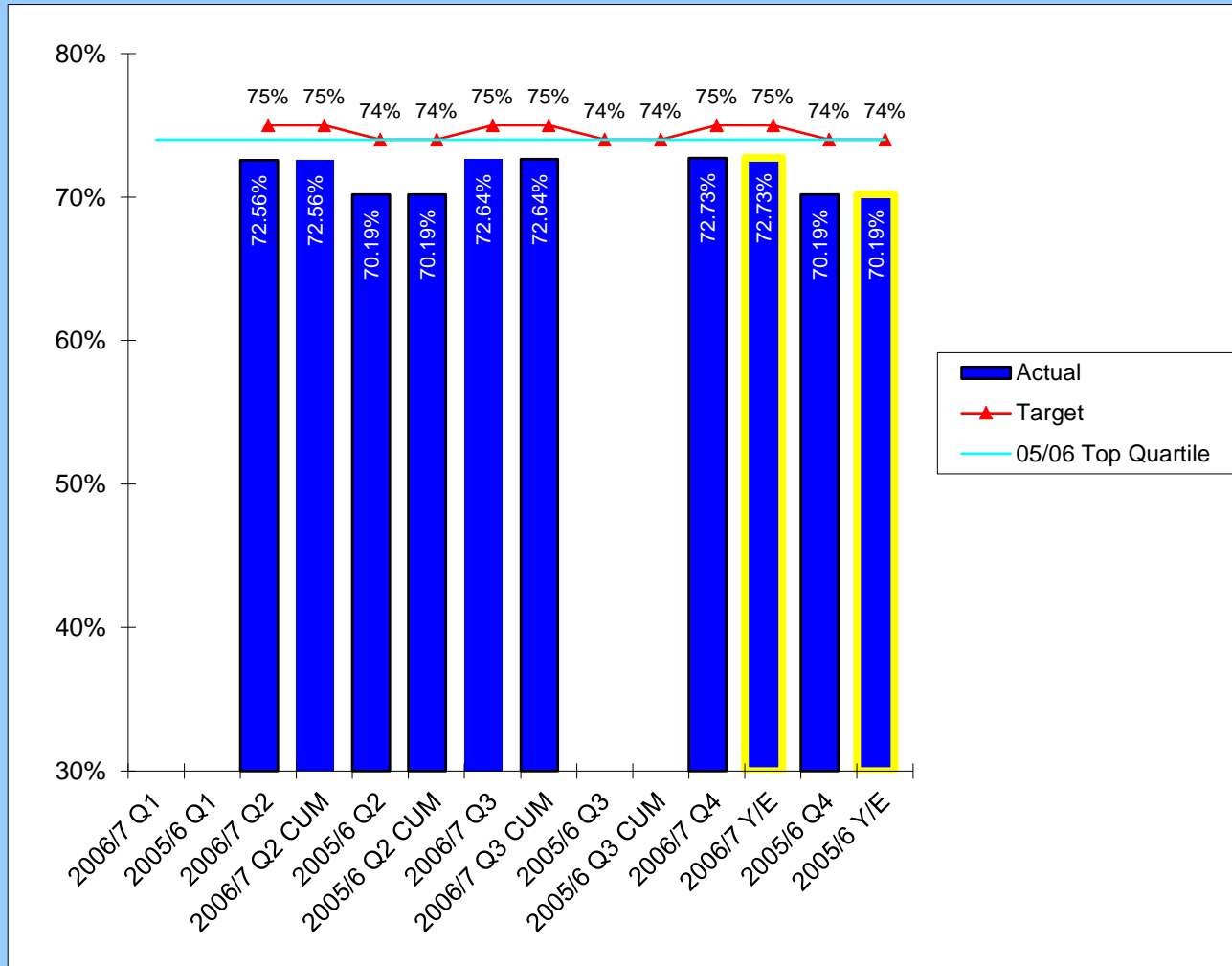


Children & Young People
Key Performance Indicators

Quarter 4 2006/7

CYP003 (BV 181c)

The percentage of 14 year old pupils in schools achieving Level 5 or above at Key Stage 3 in Science



Performance Comparisons

↑

2005/6 Top Quartile 74.0%
SBC 2nd Quartile

Target

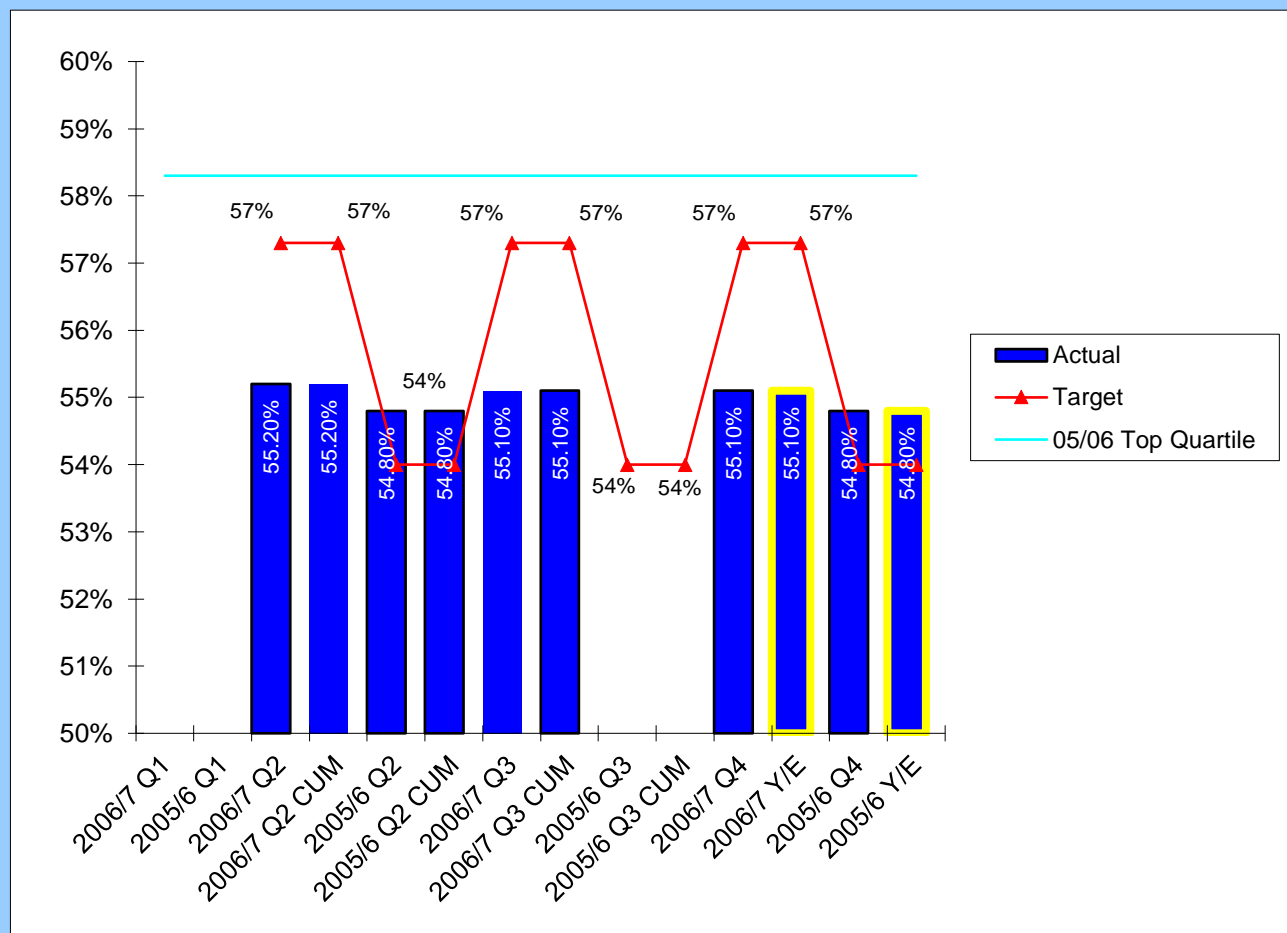
■

Comments: Reported data relates to results at the end of the 2005-06 school year. They are a good improvement on 2005, moving closer to the aspirational national target. They represent good value added progress, being better than the targets in the externally provided 'Family Fischer Trust' data which predicts outcomes for pupils taking account of prior attainment as well as contextual socio-economic factors.

Head of Service Contact Details: Julia Morrison (52)7041

CYP004 (BV 38)

The percentage of 15 year old pupils in schools achieving 5 or more GCSEs at grades A*-C or equivalent



Performance Comparisons

↑

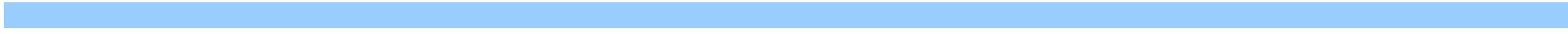
2005/6 Top Quartile 58.3%
SBC 2nd Quartile

Target

■

Comments: Reported data is for results at the end of the 2005-06 school year. 2006 results built on the considerable gains made in 2005 and reflected good value added progress against expected outcomes based on pupils' prior attainment.

Head of Service Contact Details: Julia Morrison (52)7041



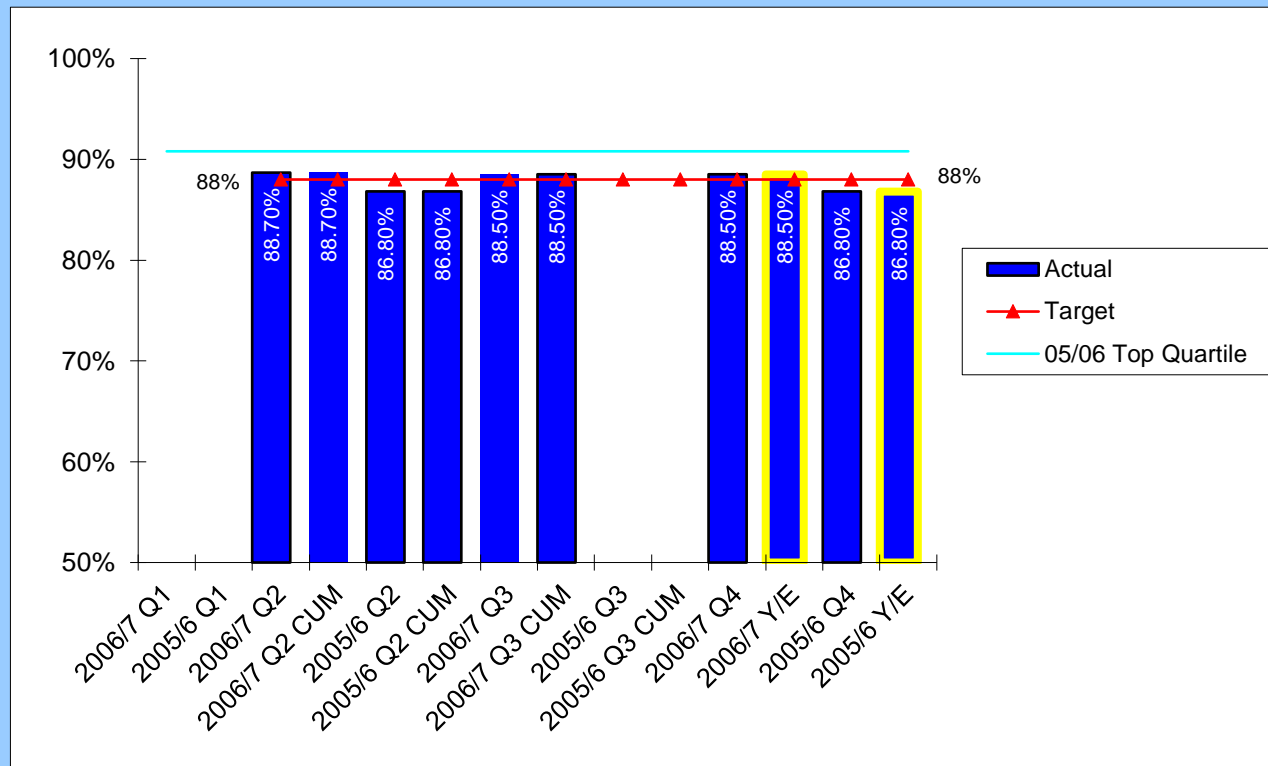


Children & Young People Key Performance Indicators

Quarter 4 2006/7

CYP005 (BV 39)

The percentage of 15 year old pupils in schools achieving 5 or more GCSEs or equivalent including English & Maths



Performance Comparisons

↑

2005/6 Top Quartile 90.8%
SBC 3rd Quartile

Target

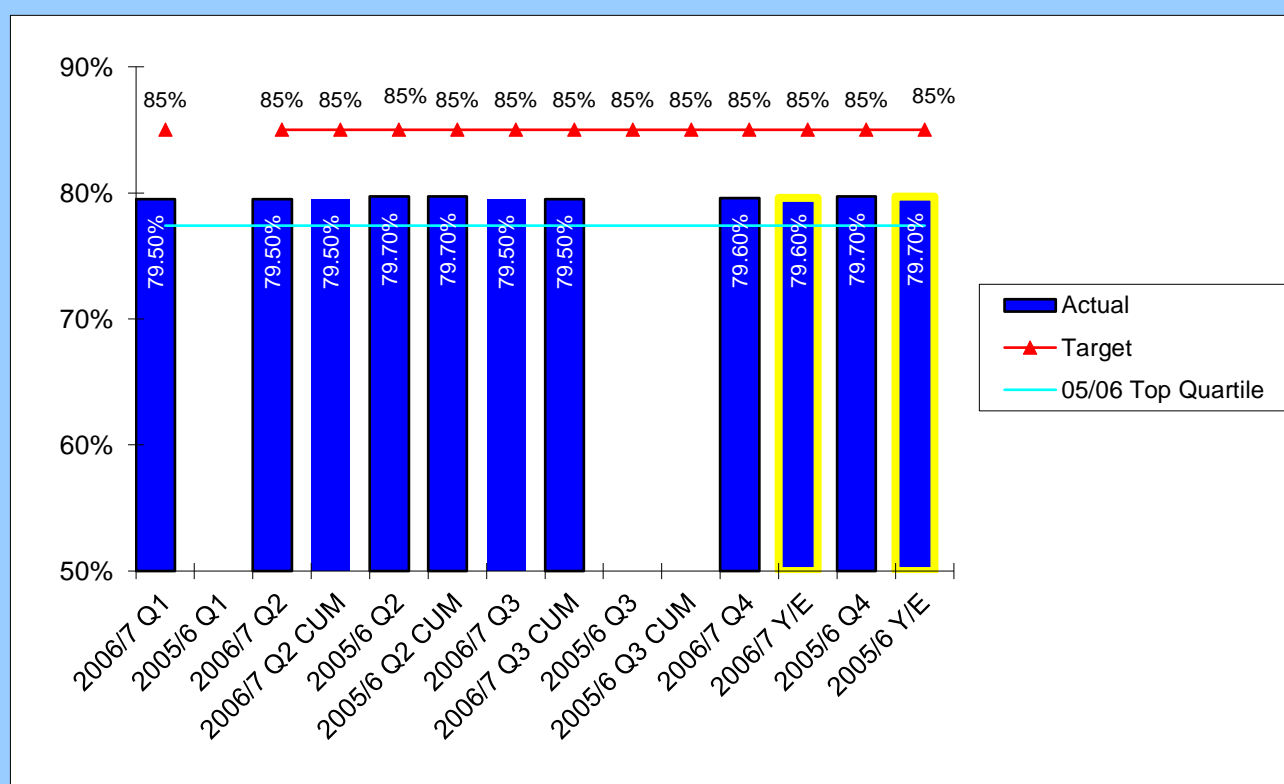
★

Comments: Reported data is for results at the end of the 2005-06 school year. 2006 results showed good improvement, up 1.7 percentage points on 2005 and exceeding the target set.

Head of Service Contact Details: Julia Morrison (52)7041

CYP006 (BV 40)

The percentage of pupils in schools achieving Level 4 or above at Key Stage 2 in Maths



Performance Comparisons

↔

2005/6 Top Quartile 77.4%
SBC Top Quartile

Target

■

Comments: Data relates to test results at the end of the 2005-06 school year. These 2006 results reflect a consolidation of the strong 2005 performance; they were 4% above the national average and showed good value added progress against expected outcomes based on pupils' prior attainment. The 85% target reflects a challenging national aspiration.

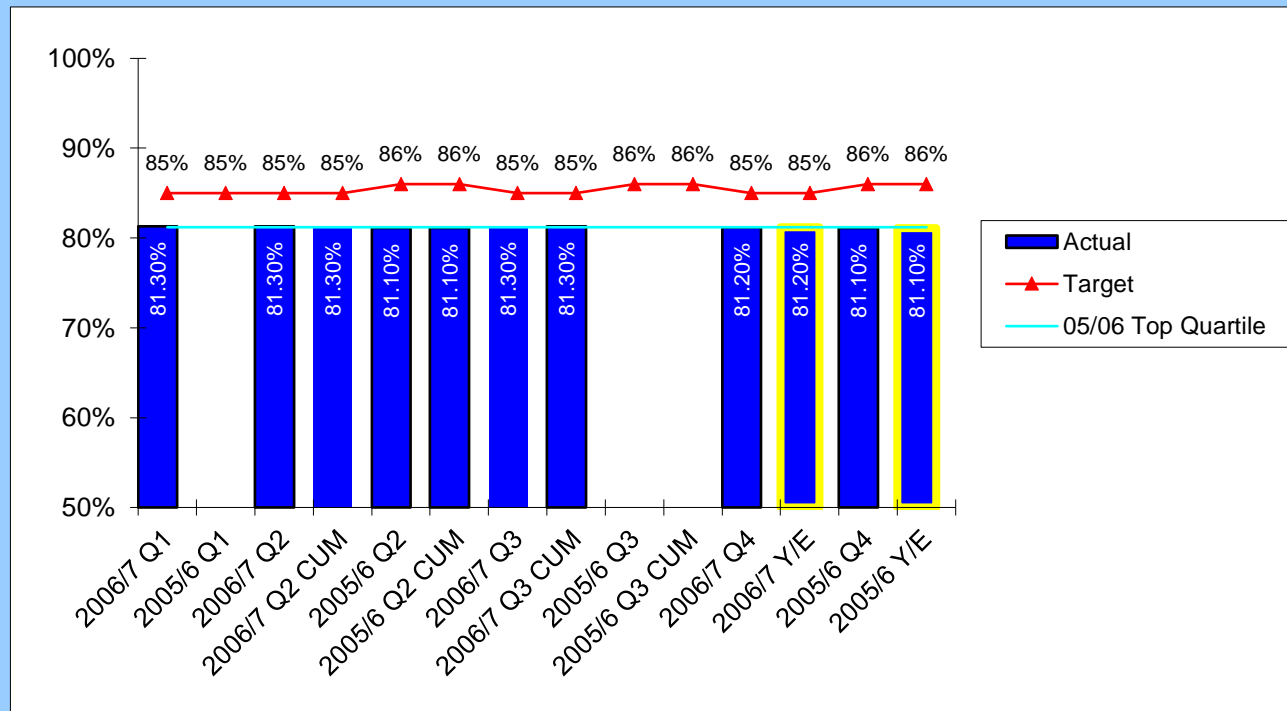
Head of Service Contact Details: Julia Morrison (52)7041



Children & Young People Key Performance Indicators

Quarter 4 2006/7

CYP007 (BV 41) The percentage of pupils in schools achieving Level 4 or above at Key Stage 2 in English



Performance Comparisons

↔

2005/6 Top Quartile 81.2%
SBC 2nd Quartile

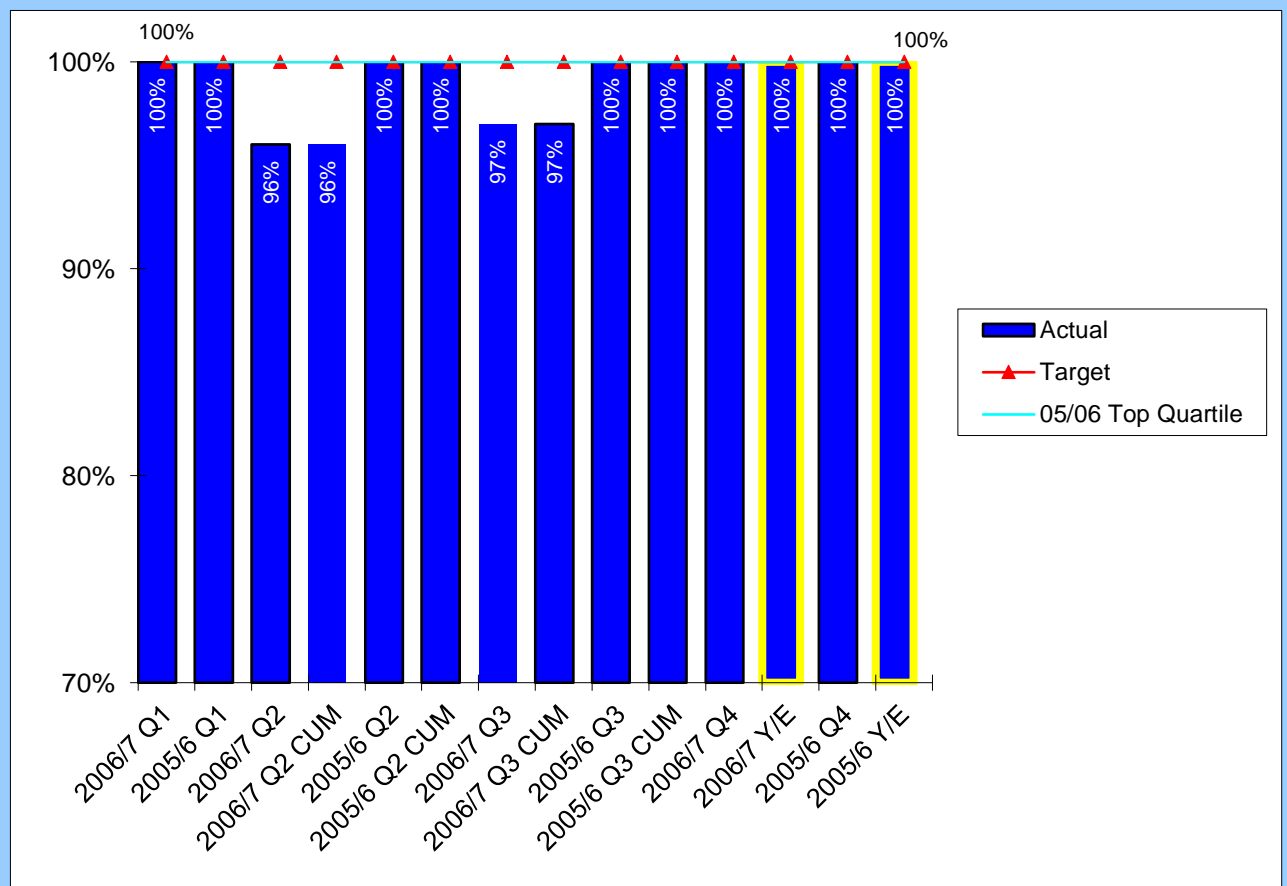
Target

■

Comments: Data relates to test results at the end of the 2005-06 school year. These 2006 results reflect a consolidation of the strong 2005 performance; they were 2% above the national average and showed good value added progress against expected outcomes based on pupils' prior attainment. The 85% target reflects a challenging national aspiration.

Head of Service Contact Details: Julia Morrison (52)7041

CYP008 (BV 162) The percentage of child protection cases which should have been reviewed during the year that were reviewed



Performance Comparisons

↔

2005/6 Top Quartile 100%
SBC Top Quartile

Target

★

Comments: 100% performance sustained over the whole year.

Head of Service Contact Details: Jane Humphreys (52)7053

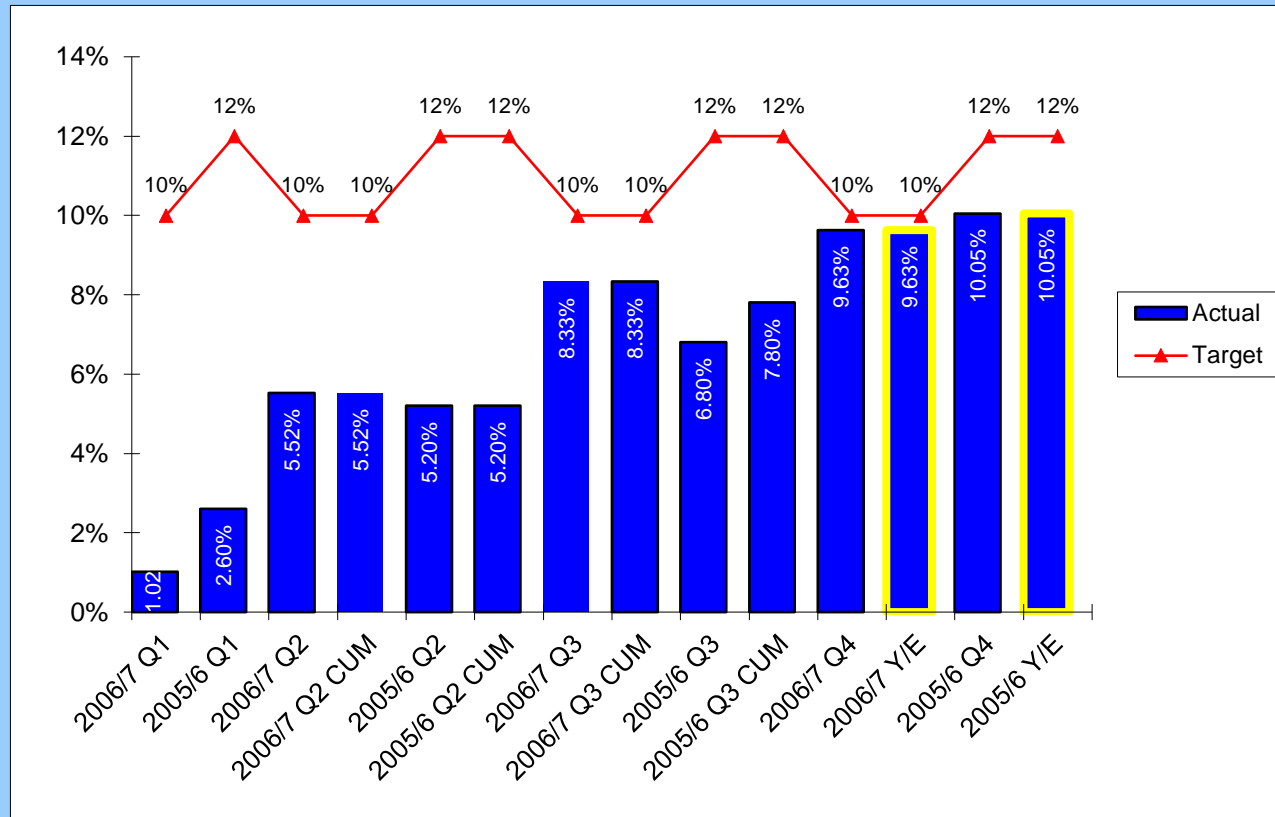


Children & Young People Key Performance Indicators

Quarter 4 2006/7

CYP009 (BV 49)

The percentage of looked after children at 31st March with 3 or more placements during the last financial year



Performance Comparisons

↑

Target

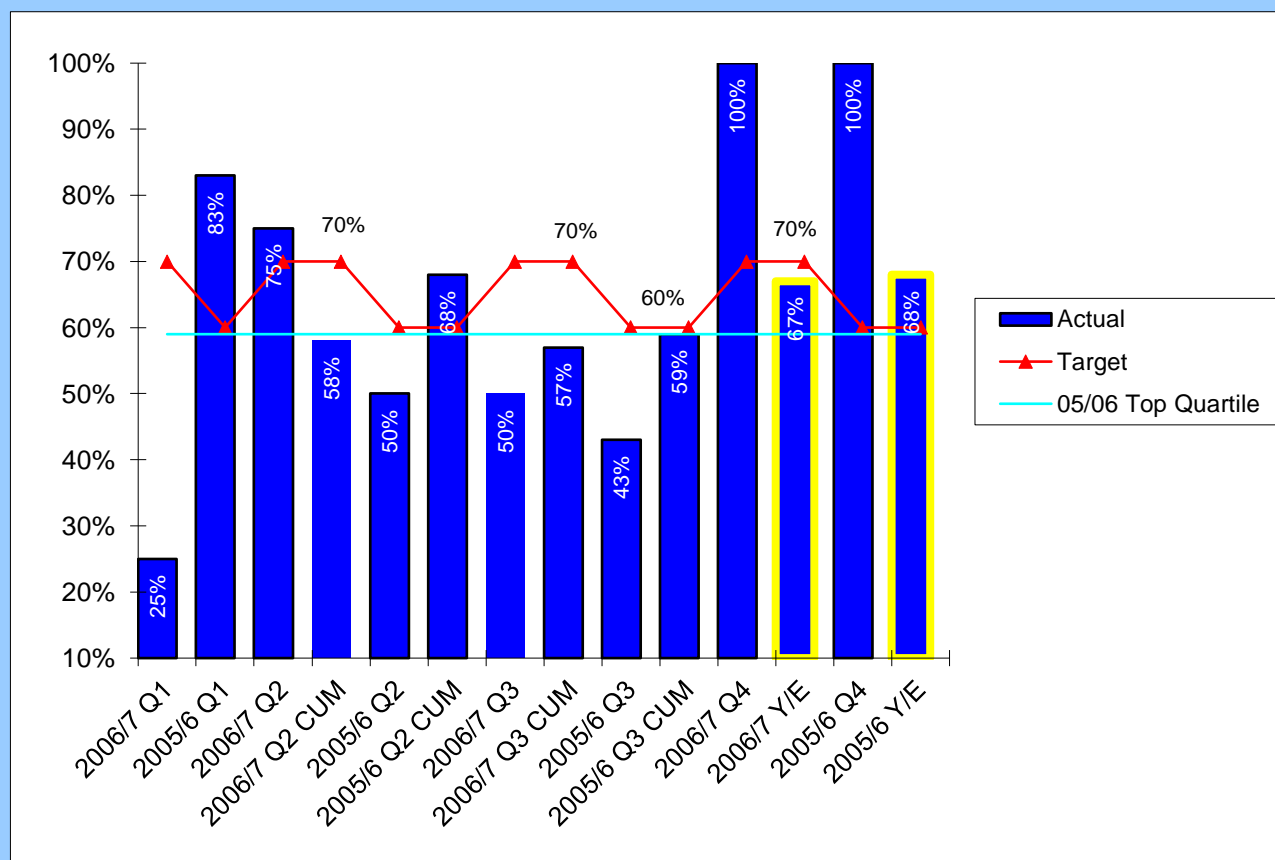
★

Comments: A lower percentage represents better performance. Year end performance has been close to, and slightly better than, the target and has remained under the 16.01% threshold for the top rated 'very good' banding within the national social care performance framework.

Head of Service Contact Details: Jane Humphreys (52)7053

CYP010 (BV 50)

The percentage of care leavers aged 16 or above with at least 1 GCSE at grade A*-G or a GNVQ



Performance Comparisons

↔

2005/6 Top Quartile 59%
SBC Top Quartile

Target

■

Comments: The small cohort of care leavers can result in significant fluctuations in performance. An ambitious stretch target of 70% was set originally, to build on the 68% outturn for 05/06. However, in light of the profile of the 06/07 cohort, the year end target was revised in Q3 to 55%. In the event, year end performance at 67% has been better than predicted and in fact has missed the target by a factor of just 1 care leaver (i.e. one more care leaver with the required qualification would have resulted in a year end outturn of 73%).

Head of Service Contact Details: Jane Humphreys (52)7053

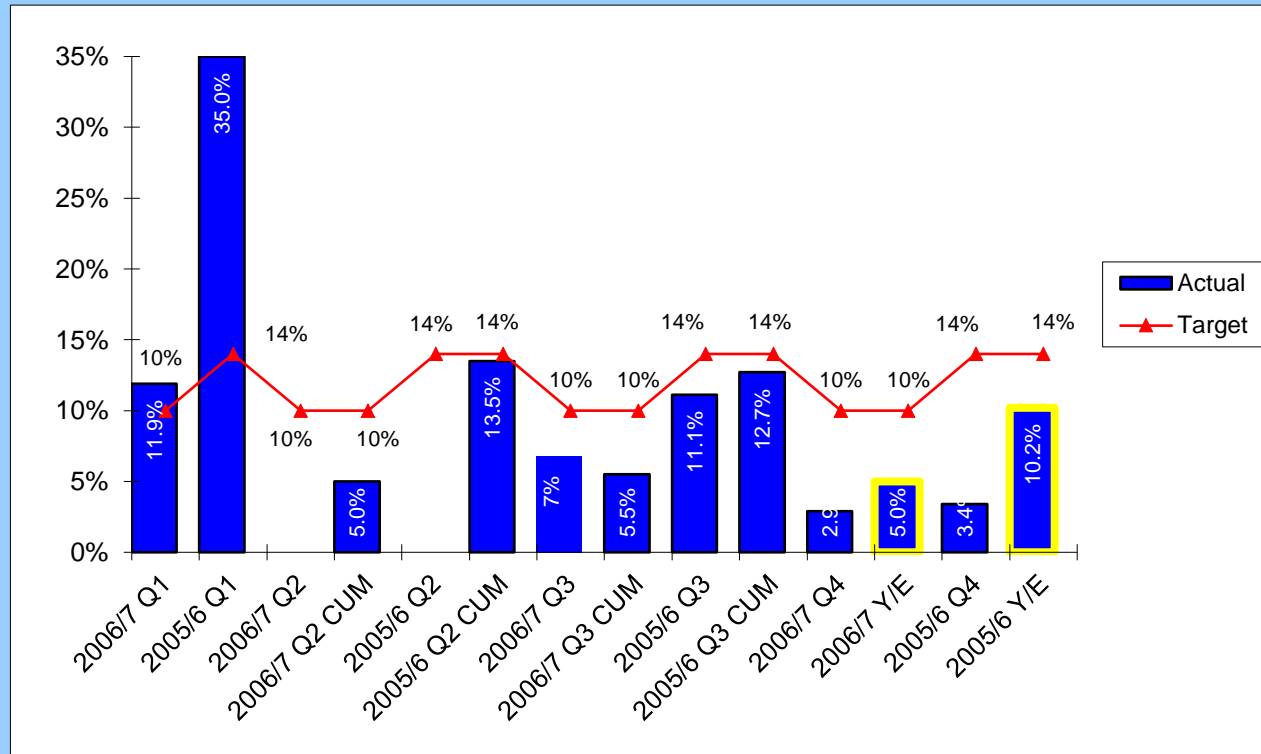


Children & Young People Key Performance Indicators

Quarter 4 2006/7

CYP011 (PAF A3)

The percentage of children registered during the year on the Child Protection Register who had been previously registered



Performance Comparisons

↓

Target

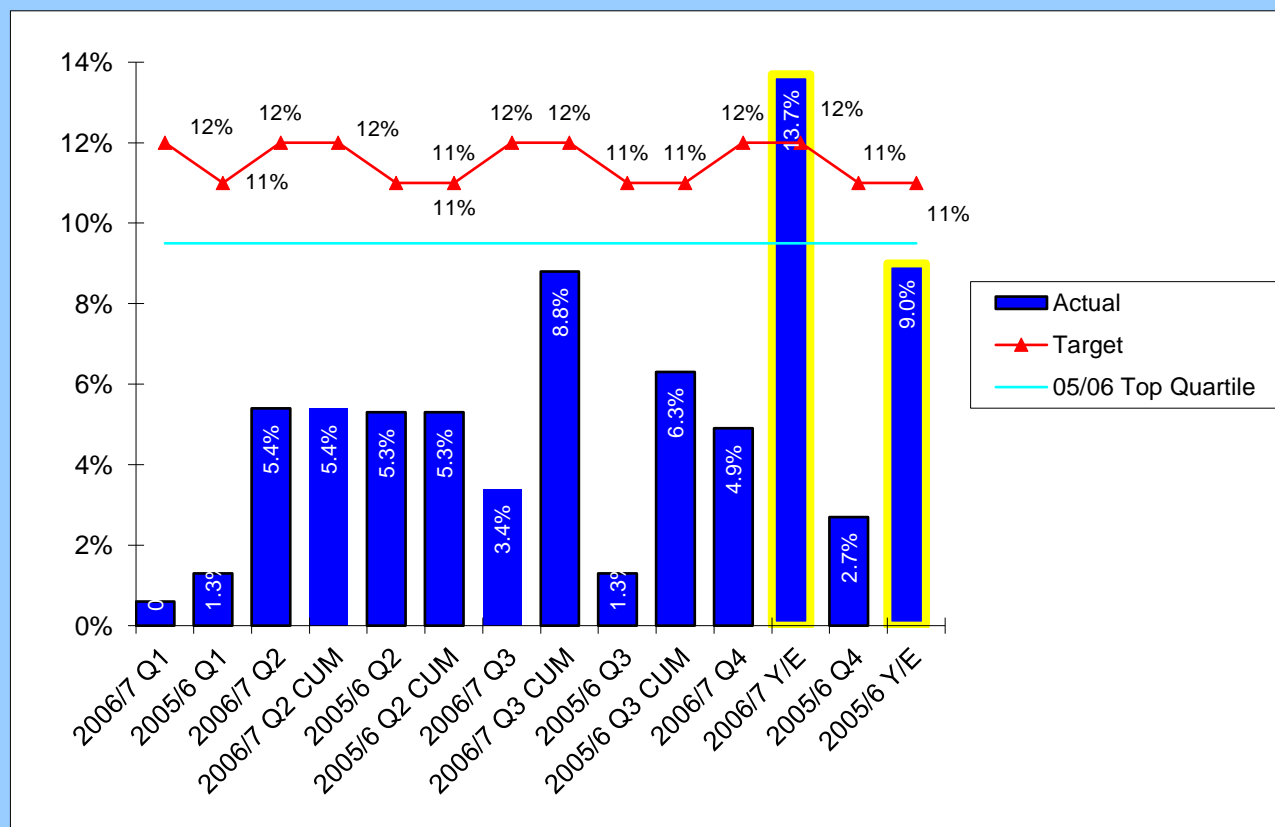
■

Comments: The 06/07 target of 10% reflects the previous year's outturn and takes account of the national social care performance framework which places top rated 'very good' performance within a range of 10<15%. Analysis in Q3 indicated that, whilst the number of re-registered cases was at expected levels, a significant increase in the overall number of registrations (from 108 to 180) would result in the proportion of those that are re-registered being lower than previously. As a result, the predicted outturn was set at 6% and year end performance has been just below this at 5%. Whilst outside the top banded range of 10<15%, it is preferable to be below rather than above this range. It is understood that consideration is being given to changing this indicator.

Head of Service Contact Details: Jane Humphreys (52)7053

CYP012 (BV 163)

Children who ceased to be looked after during the year as a result of adoption/ special guardianship orders, as a percentage of all children looked after for 6 months or more



Performance Comparisons

↑

2005/6 Top Quartile 9.5
SBC Top Quartile

Target

★

Comments: The pattern of adoptions is affected by timeliness of court hearings and decisions. The year end outturn reflects improvement over last year, exceeding the target and sustaining top banded 'very good' performance of between 8% and 25% within the national social care performance framework .

Head of Service Contact Details: Jane Humphreys (52)7053

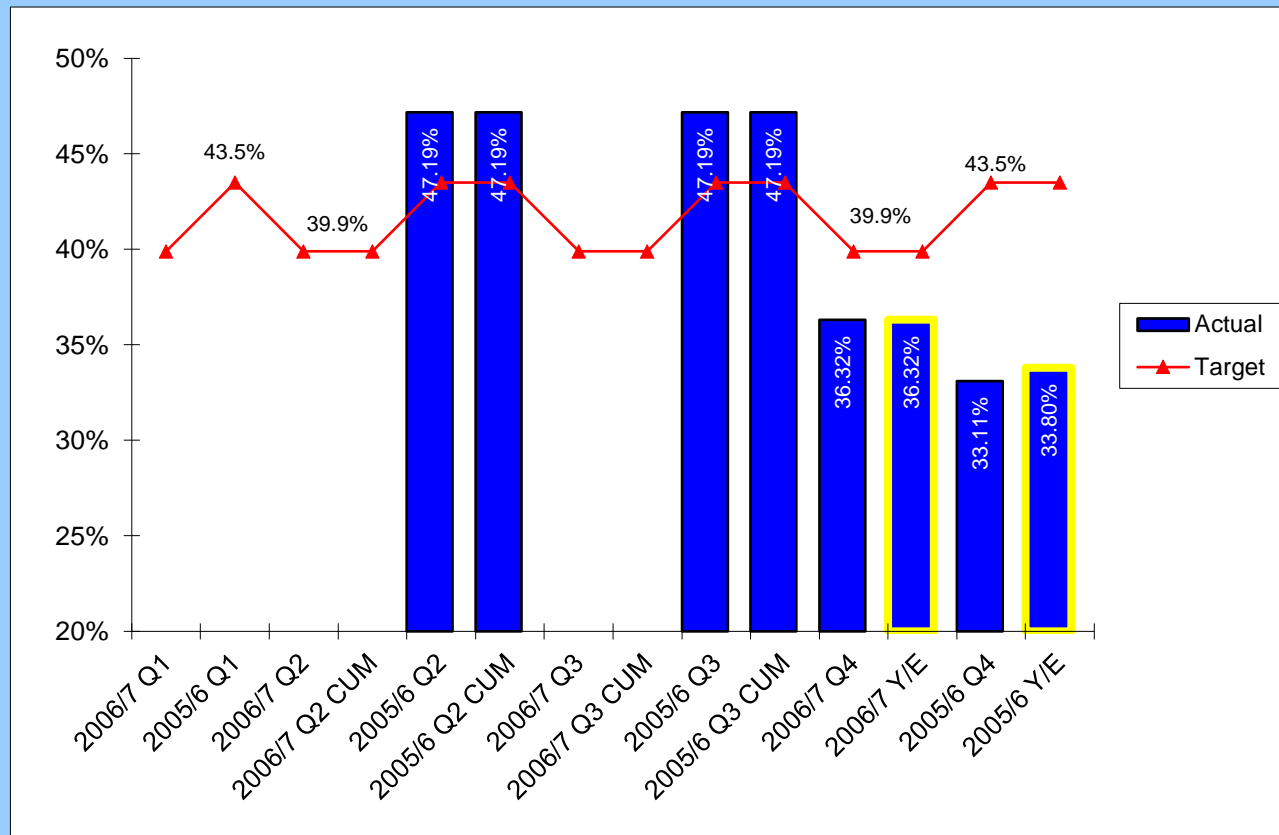


Children & Young People Key Performance Indicators

Quarter 4 2006/7

CYP013 (Ch030)

Young offenders - the number of people who re-offend within 12 months of the original offence (LPSA 2004-07)



Performance Comparisons

↓

Target

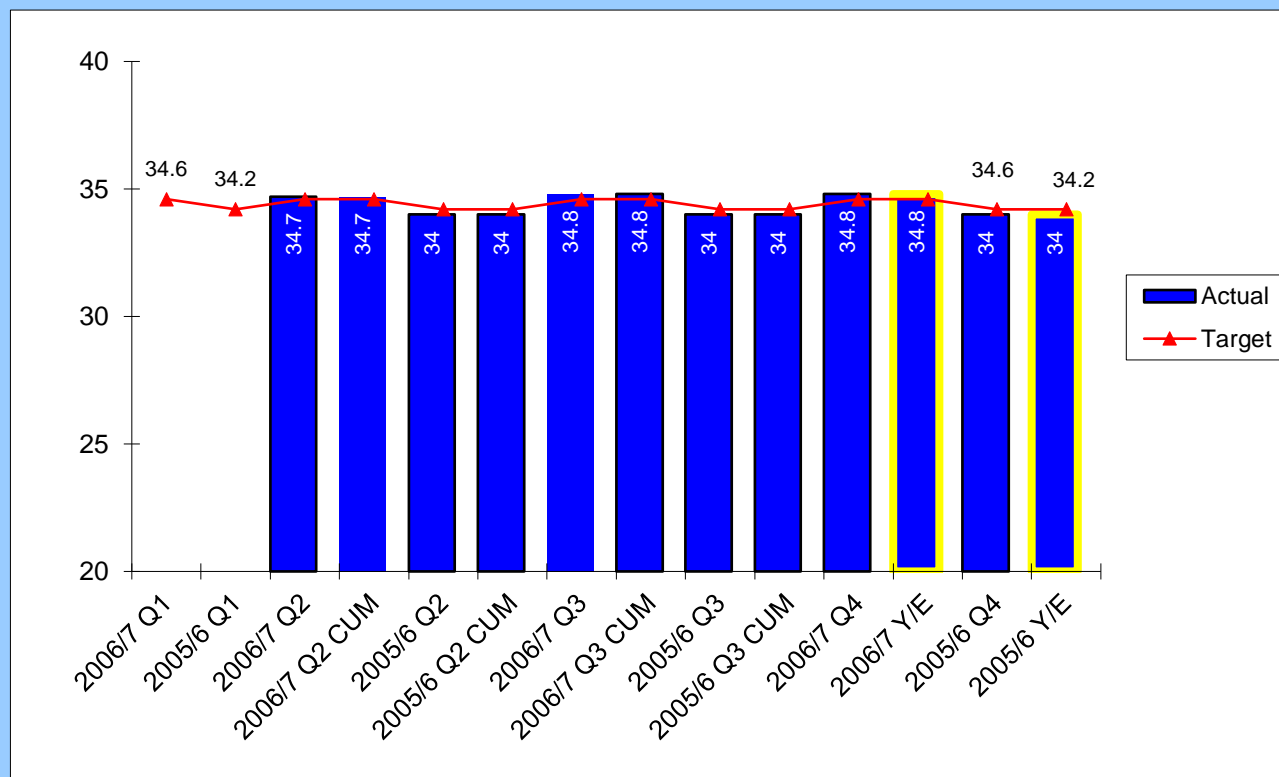
★

Comments: The 06/07 figure represents the proportion of those young people who offended during Oct-Dec 05 who re-offended in the following 12 months. Although slightly higher than the re-offending rate of the Oct-Dec 04 cohort, some measure of fluctuation in annual rates will occur depending on the nature of the cohort included in the Oct-Dec count. The year end performance for 06-07 achieved the LPSA target.

Head of Service Contact Details: Jane Humphreys (52)7053

CYP014 (Ch028)

The average National Curriculum point score across all 3 core subjects at Key Stage 3 (LPSA 2004-07)



Performance Comparisons

↑

Target

★

Comments: 06-07 year end data is for KS3 attainment following the 05-06 school year. Performance showed an improvement on the previous year, reflecting the relatively strong local performance at KS3 compared to national trends, and exceeding the target.

Head of Service Contact Details: Julia Morrison (52)7041

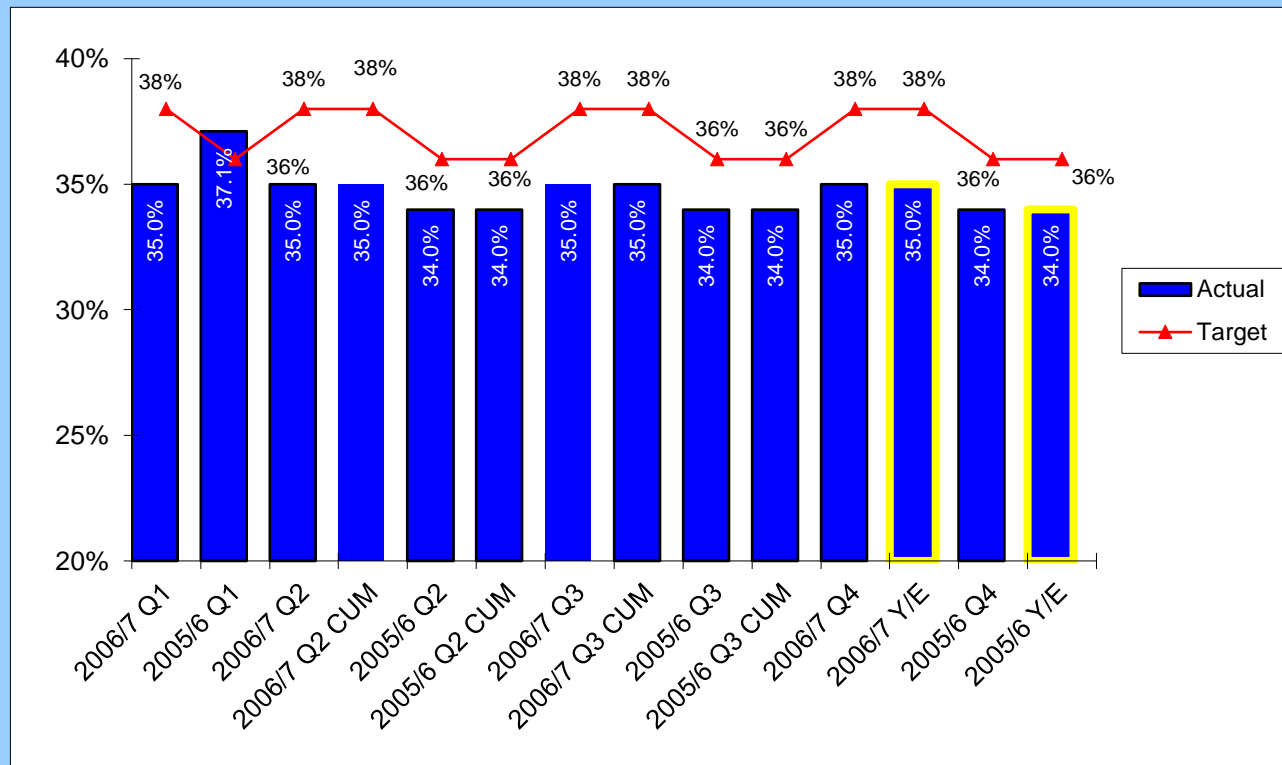


Children & Young People Key Performance Indicators

Quarter 4 2006/7

CYP015 (Ch034)

The percentage of children achieving Early Learning goals by final term Foundation Stage - CL&L (Communication, Language and Literacy) LPSA 2004-07



Performance Comparisons

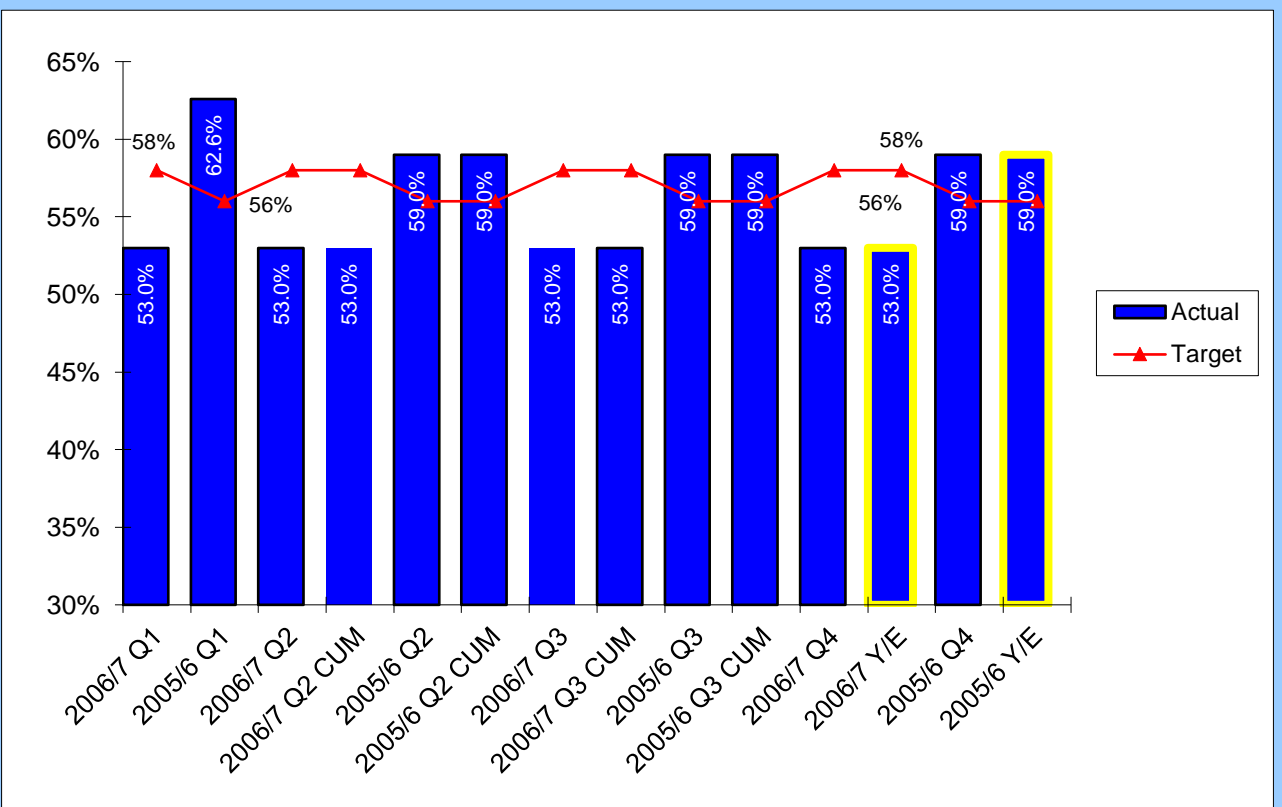
↑

Target

Comments: 06-07 year end data is for attainment following the 05-06 school year. Performance was below target; however, success in meeting the LPSA target will depend on Foundation Stage results at the end of the 06-07 school year.
Head of Service Contact Details: Julia Morrison (52)7041

CYP016 (Ch035)

The percentage of children achieving Early Learning goals by final term Foundation Stage in PS&ED (Personal, Social and Emotional Development) LPSA 2004-07



Performance Comparisons

↓

Target

Comments: 06-07 year end data is for attainment following the 05-06 school year. Performance was below target; however, success in meeting the LPSA target will depend on Foundation Stage results at the end of the 06-07 school year.
Head of Service Contact Details: Julia Morrison (52)7041

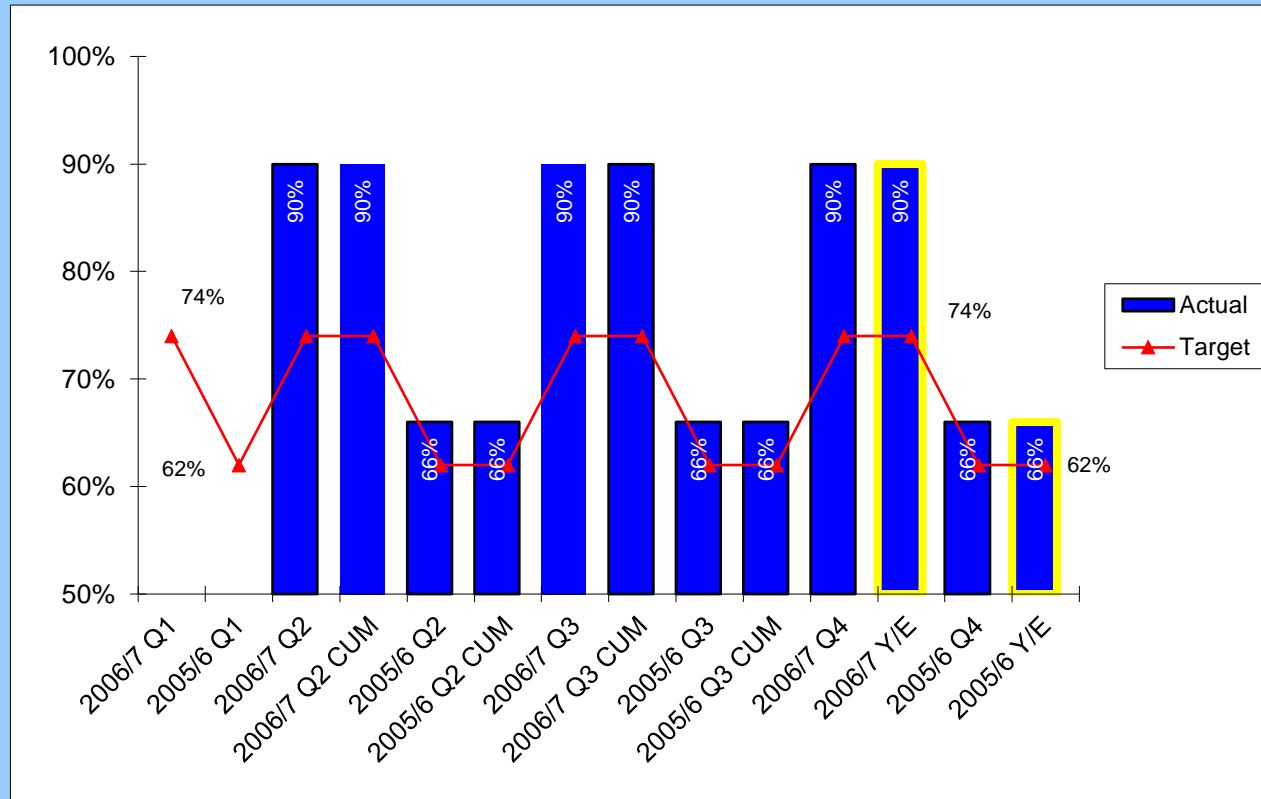


Children & Young People Key Performance Indicators

Quarter 4 2006/7

CYP017 (Ch033)

The percentage of 5-11 year olds in primary schools participating in an average of 2 hours high quality PE and school sport per week (LPSA 2004-07)



Performance Comparisons

↑

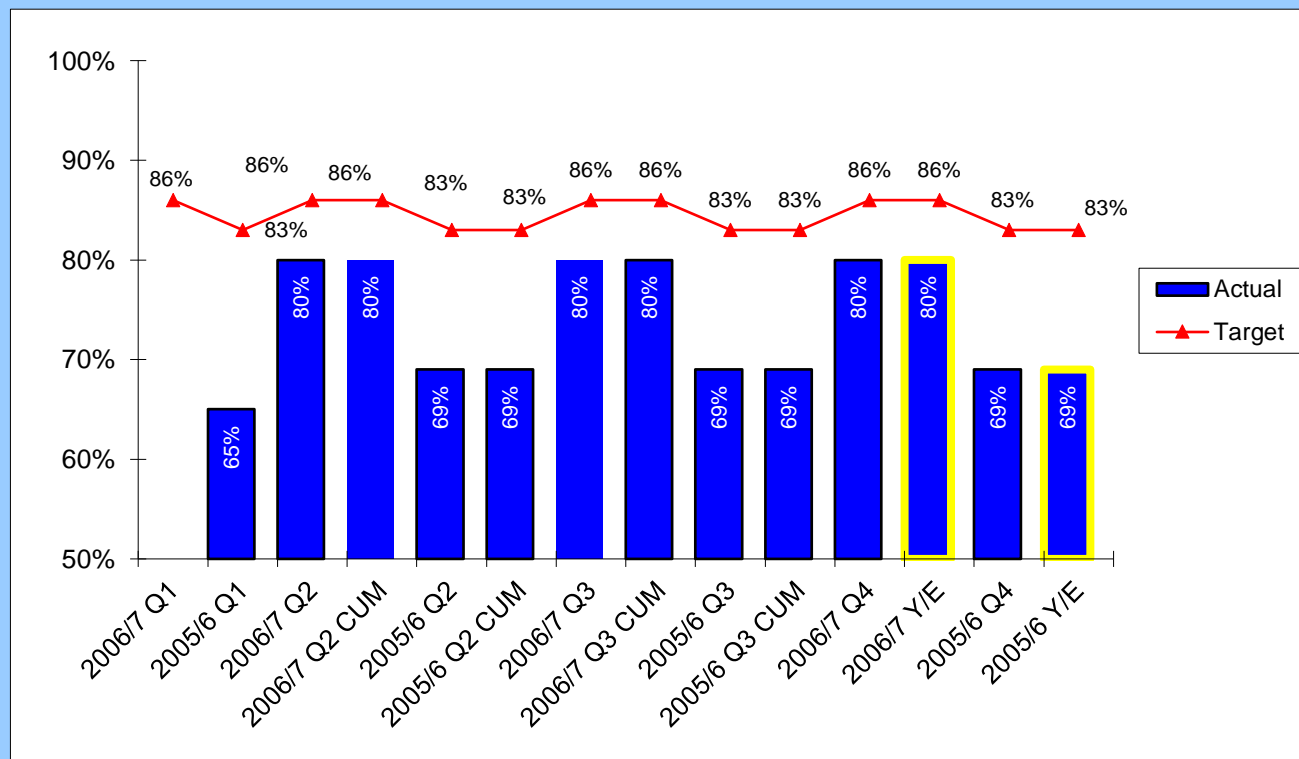
Target ★

Comments: 06-07 year end data relates to participation rates over the 05-06 school year. Performance exceeded the target for that year; however, success in meeting the LPSA target will depend on the outturn for the 06-07 school year.

Head of Service Contact Details: Julia Morrison (52)7041

CYP018 (Ch039)

The percentage of 12-16 year olds in secondary schools participating in an average of 2 hours high quality PE and school sport per week (LPSA 2004-07)



Performance Comparisons

↑

Target ■

Comments: 06-07 year end data relates to participation rates over the 05-06 school year. Performance was below the target for that year; however, success in meeting the LPSA target will depend on the outturn for the 06-07 school year. The rate of progress from 05-06 to 06-07 indicates that the 07-08 target of 90% is achievable.

Head of Service Contact Details: Julia Morrison (52)7041

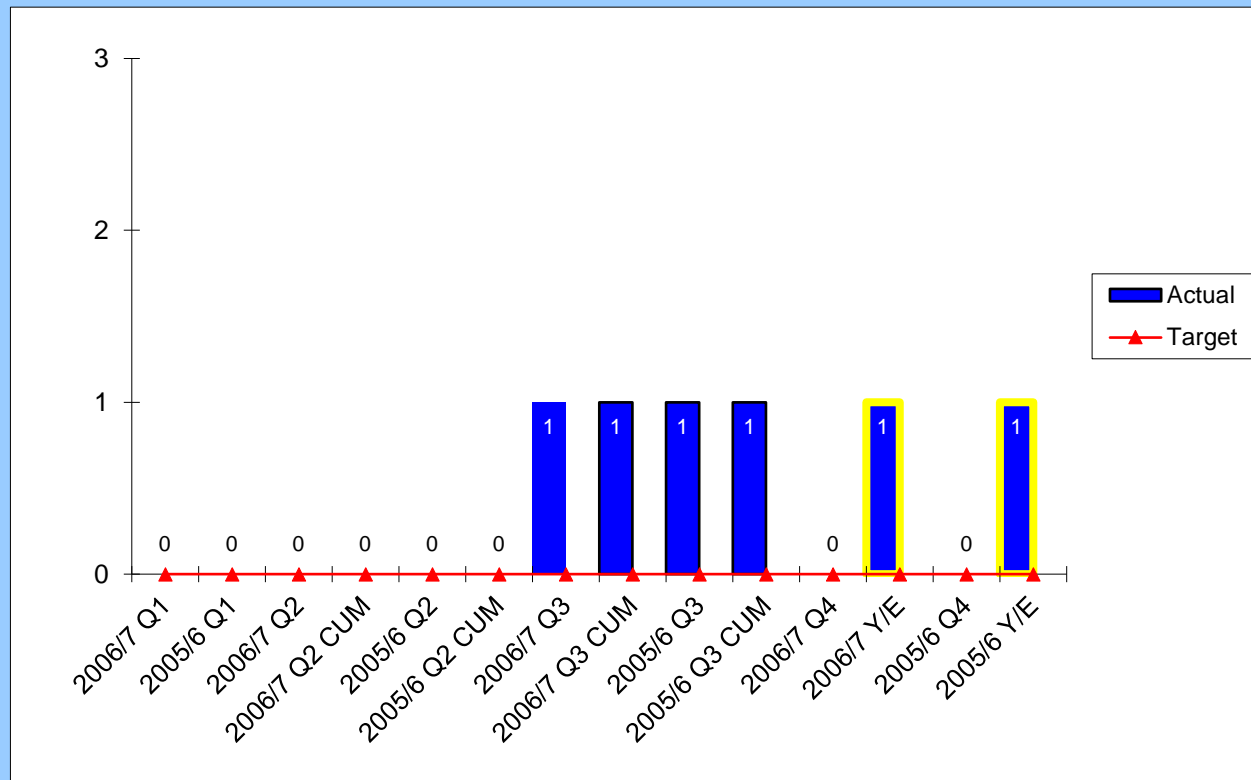


Children & Young People Key Performance Indicators

Quarter 4 2006/7

CYP019 (Ch040)

Number of local authority SRAS schools (Schools Requiring Additional Support) at Level 3 which move on to an Ofsted designation



Performance Comparisons

↔

Target

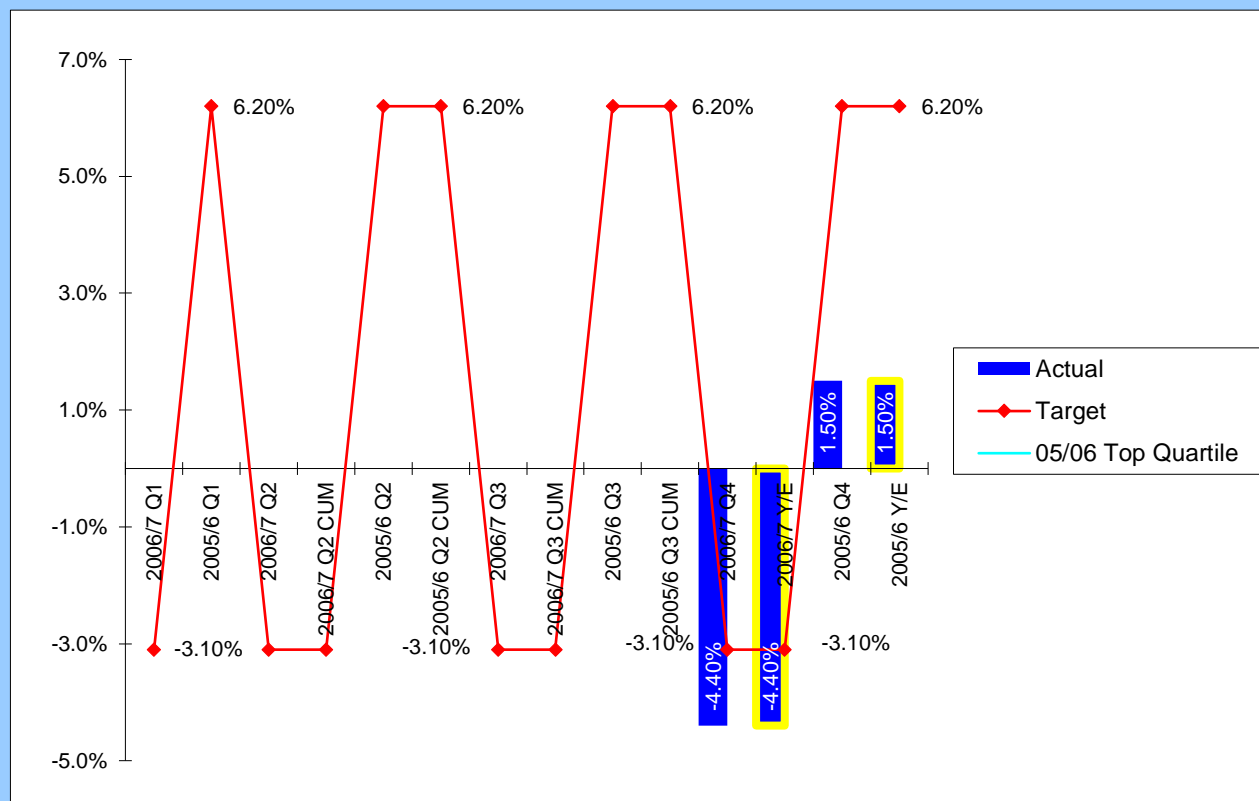
■

Comments: The authority has sustained a very strong performance in this area, with very few schools over time having been placed in an Ofsted designated category requiring further support to the school. There is currently just one school which is under a 'notice to improve' so the ambitious target (of maintaining no schools in any designation) has not been achieved.

Head of Service Contact Details: Julia Morrison (52)7041

CYP020 (BV197)

Percentage change in the number of conceptions to females aged under 18, per 1,000 females aged 15-17 resident in the area



Performance Comparisons

↑

2005/6 Top Quartile -18.2%
SBC 4th Quartile

Target

★

Comments: The data for national reporting on this indicator relates to a period of over one year previously. Data reported in Feb 2007 indicates a positive reduction in the teenage conception rate, exceeding the targeted figure.

Head of Service Contact Details: Julia Morrison (52)7041